



# Next Generation Assessment Meeting

*Office of Assessment*

Oct. 7, 2022

- We look forward to meeting with you today!
- If you are joining online, please mute your microphone and turn off video if you are not speaking to preserve bandwidth.
- We will be recording this meeting.
- Please [sign-in here](#) or use the QR code.
- [See here for resources.](#)

## Welcome!

---



In partnership with key stakeholders, we create a comprehensive educational assessment program that:

- accurately measures student performance;
- produces actionable data, and;
- provides tools, guidance and training to empower LEAs to meet the needs of all learners and make informed decisions.

# Office of Assessments

---

Our Mission



# Objectives

- Introduce the OSSE Office of Assessments Staff
- Explain how Local Education Agency (LEA) Assessment Managers are instrumental in the oversight and coordination of state summative assessments
- Provide a high-level review of this school year's assessment portfolio and cycle
- Explain the 2022-23 policies and procedures that will direct assessment administration
- Review the Next Generation Meetings and Bulletins, the means by which OSSE Office of Assessments communicates with LEAs

# Agenda

## Introduction to OSSE and Statewide Assessments

- OSSE's Office of Assessments

## 2022-23 Test Administration

- LEA Role and Responsibilities
  - Test Administration Timeline
  - WIDAACCESS for ELLs
  - National Assessment of Educational Progress (NAEP)
  - Multi-State Alternate Assessment (MSAA)
  - Dynamic Learning Maps (DLM)
  - Partnership for Assessment of Readiness for College and Careers (PARCC)
  - DC Science Assessment

## Assessment Policy

- 2022-23 Assessment Participation and Performance Policy
- 2022-23 Test Security Policies and Resources
- 2022-23 Testing Accommodations Policies and Alternate Assessment Eligibility Process

## Next Generation Assessment Meetings and Communications



# Introduction to Office of Assessments

---

# Office of Assessments Team

---

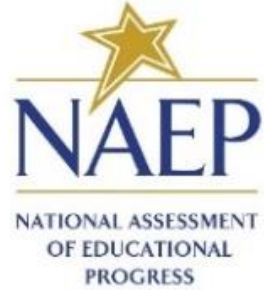
- **Stephanie Snyder**, Director of Assessments
- **Yolanda Barber**, Assessment Specialist, Math
- **Chelsea Charland**, Assessment Specialist, Science
- **Asaad Fulton**, Assessment Specialist, Special Populations
- **Rachel Knaizer**, Assessment Specialist, ELA and Test Administration
- **Lavinia Ringgold**, Assessment Specialist, Test Security
- **Cassidy Schenley**, NAEP State Coordinator



# 2022-23 Test Administration

---





**DC Science**  
The District of Columbia Assessment of  
the Next Generation Science Standards



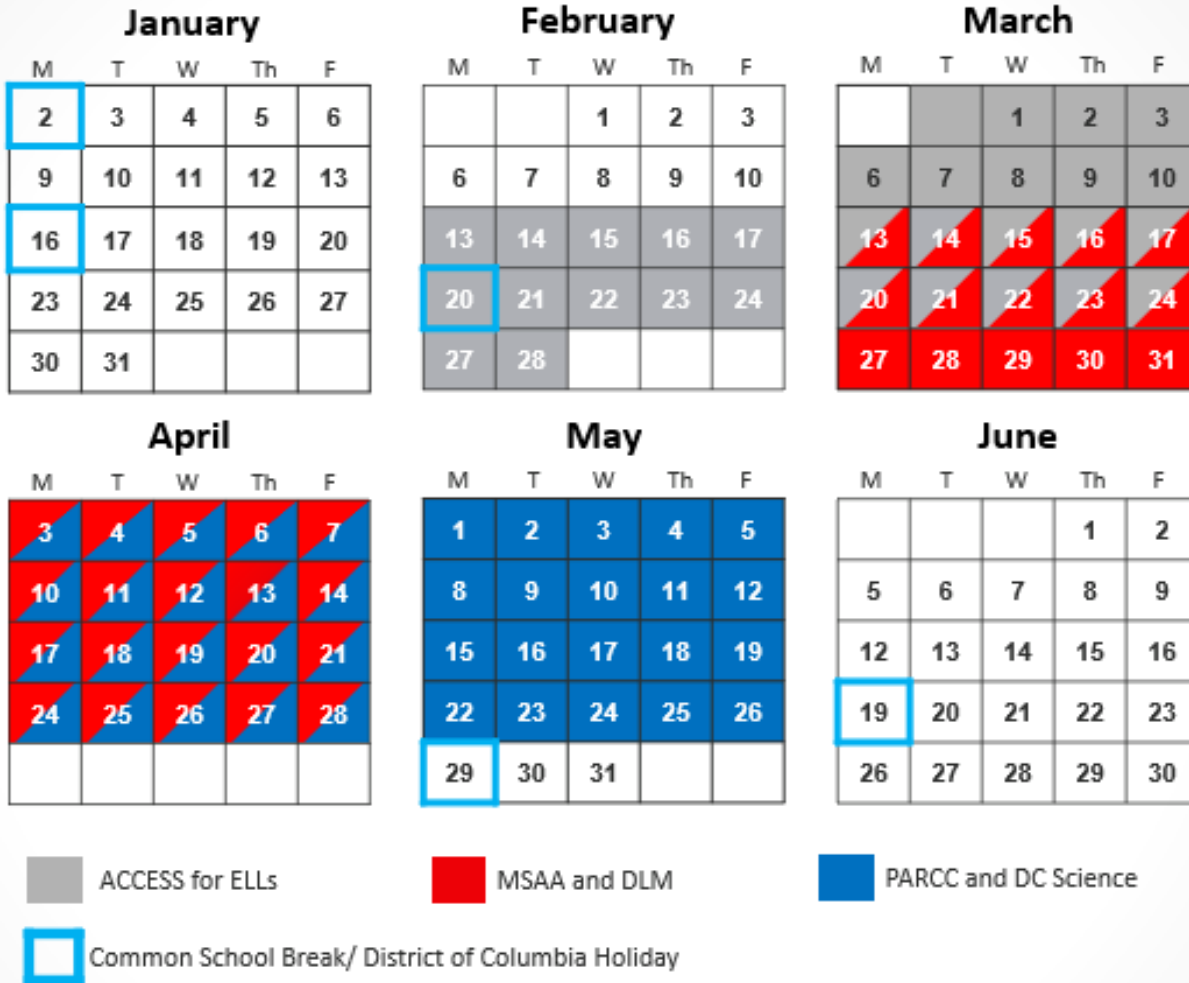
# Statewide Assessments

---

# 2022-23 Statewide Testing Windows

Assessment	2022-23 Statewide Test Window	
<b>ACCESS for ELLs</b>	Feb. 13 – March 24, 2023	
<b>NAEP</b> (Selected schools only)	March 20 – April 14, 2023	
<b>MSAA &amp; DLM</b>	March 13 – April 28, 2023	
<b>PARCC &amp; DC Science</b>	Online Testing	Paper Testing (Accommodations only)
	April 3 – May 26, 2023	April 3 – May 19, 2023

# 2022-23 Statewide Testing Windows





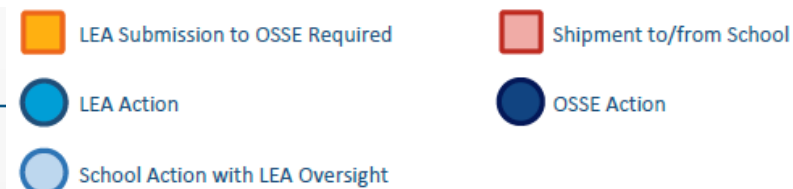
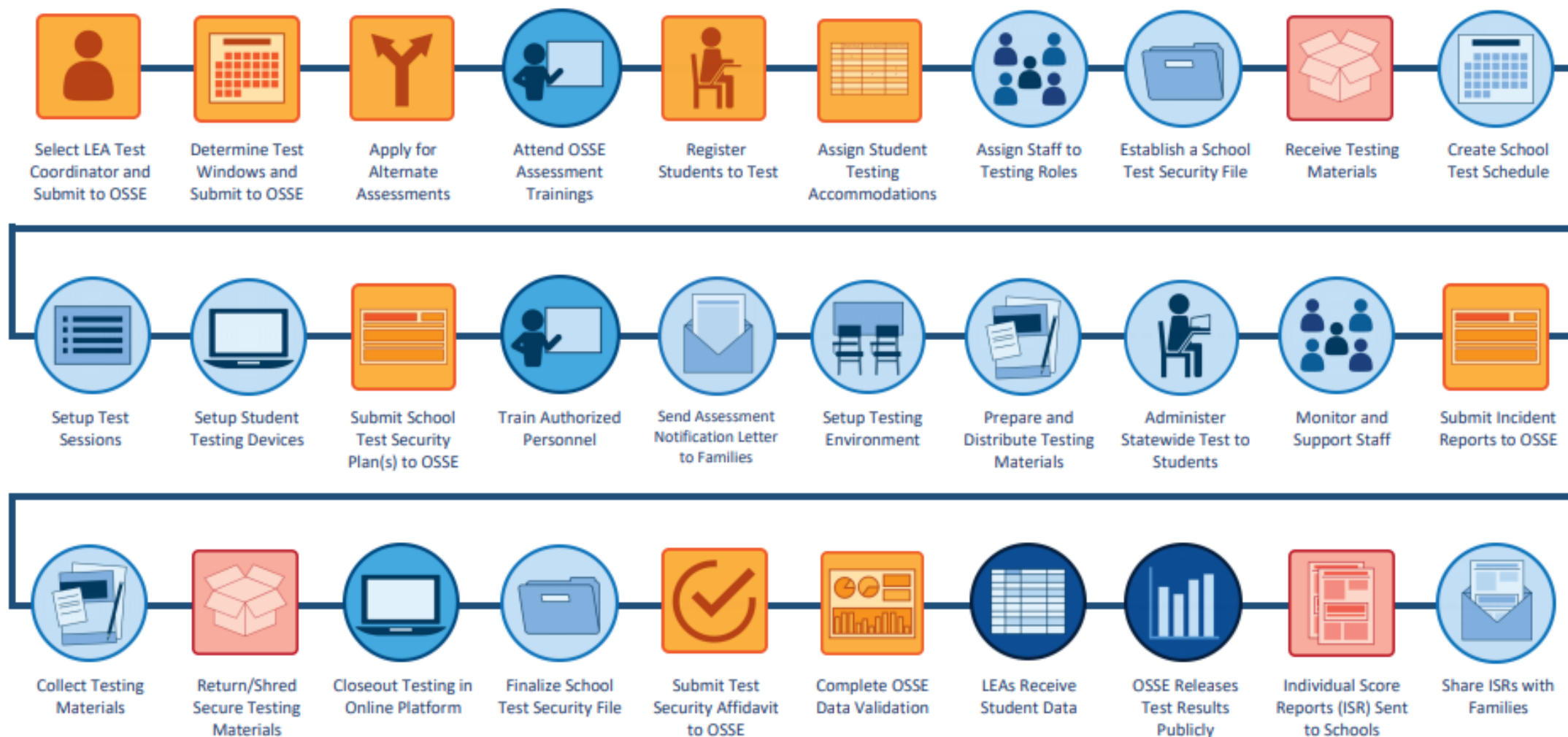
District of Columbia 2022-23 Statewide Assessment Activities Schedule for LEA Assessment Mangers

Month	WIDA/ACCESS for ELLs			Multi-State Alternate Assessment (MSAA) & Dynamic Learning Maps (DLM) (Alternate Assessments)		Partnership for Assessment of Readiness for College and Careers (PARCC) & DC Science Assessment			Test Security	
August 2022	Administer WIDA Screener/K Screener			Release Alternate Assessment Eligibility Policy and One Percent Policy						
September		WIDA Screener Training Modules		Review Eligible Students and Submit Renewal Applications		Release of OSSE Statewide Assessment Participation and Performance Policy & OSSE Accommodations Guide				
October						Release of 2023-223 Test Security Guidelines				
November	Registration Verification			Eligibility Determinations Provided to LEAs		Initial Eligibility Determination Appeals		Test Security Training Modules Released		
December	Test setup in WIDA Assessment Management System (AMS)			LEA Test Coordinator Training				LEA Test Coordinator Training	Release of PARCC & DC Science Assessment Manuals	
January		LEA Test Coordinator Training	Test Materials Arrive at Schools		Appealed Determination to LEAs	High School Registration and 3-8 Verification	Student Registration and Personal Needs Profile (SR/PNP) Completion			
February	ACCESS for ELLs Test Window Feb. 13-March 24								Test Security Training School Test Security Plans Due 15 business days prior to the start of each assessment	Incident Reporting, and Test Security Monitoring/ Investigations during Statewide Assessments
March				MSAA & DLM Test Window March 13-April 28		Test Materials Arrive at Schools				
April	Return Test Materials & Test Security Affidavits					PARCC & DC Science Test Window April 3-May 25 Paper Test Window: April 4-May 19				
May				Return Test Materials & Test Security Affidavits				Return Test Materials & Test Security Affidavits		
June	ACCESS Results Release and Individual Student Report (SR) Available									
July										
August 2023				MSAA Results Release and SR Shipment to Schools		PARCC & DC Science Results Release and SR Shipment to Schools				

# Statewide Assessment Activities Schedule

- PARCC and DC Science testing dates are aligned in 2023.
- MSAA and DLM testing dates are aligned in 2023.
- NAEP 2023 testing will only include select schools who have already been notified of their participation.
- Will soon be available on the [Test Coordinator Resources webpage](#).

# District of Columbia Assessment Coordination Timeline



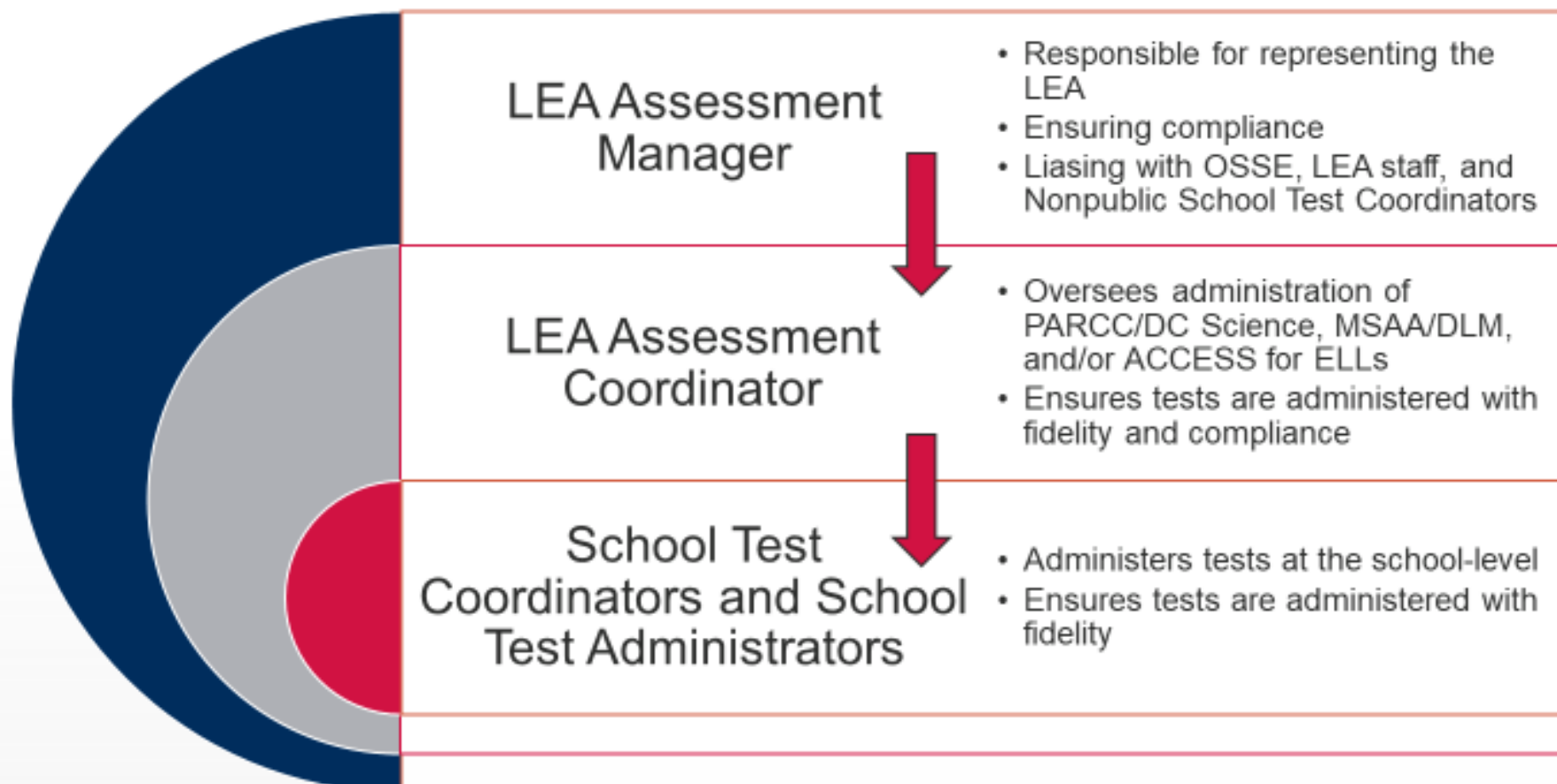


# The LEA Assessment Manager

---

*Introduction to the Role and Statewide Assessments*

## LEA Assessment Manager Role & Responsibilities



# LEA Assessment Manager & Nonpublic School Test Coordinator Contact Information

- Each LEA Assessment Manager and all Nonpublic School Test Coordinators are required to submit the name and contact information of their LEA Assessment Coordinators to OSSE's Office of Assessments by **Oct. 14, 2022**.
- Contact information can be submitted to OSSE by completing the [2022-23 LEA and Nonpublic Contact Information](#) form. If staffing changes occur, the LEA Assessment Manager designation can be updated.
- More details regarding the responsibilities of the LEA Assessment Managers and Nonpublic School Test Coordinators can be found on the [Test Coordinator Resources webpage](#).





District of Columbia  
Office of the State Superintendent of Education

## Coordinating SY2022-23 Statewide Assessments



# Coordinating SY2022-23 Statewide Assessments Guide

- Provides an overview of test administration processes and resources for all DC statewide summative assessments
- Not meant to replace other required trainings, readings and resources
- Will soon be found on the [Test Coordinator Resources webpage](#).

# New LEA Coordinator Trainings

Training	Summary	Dates
New LEA Test Coordinator Orientation	The goal of this orientation is to familiarize you with statewide summative assessments in the District of Columbia, their process, and your role in ensuring their successful administration.	First Opportunity: Oct. 27 from 10 a.m. to 12 p.m. in-person  Second Opportunity: Nov. 7 from 1 p.m. to 3 p.m. in-person



# WIDA ACCESS for ELLs

*Test Administration*

# WIDA Consortium & ACCESS for ELLs

- The WIDA consortium designs and implements proficiency standards and assessments for students in grades K-12 who are English Learners (ELs).
- WIDA is formerly known as the World-Class Instructional Design and Assessment; initially made up by Wisconsin, Delaware and Arkansas.
- Consortium has grown to 40 member states, territories and federal agencies.
- Assessments are designed to determine English language proficiency and to monitor students' progress towards English language proficiency. Suite includes:
  - WIDA Screener Online/Paper
  - Kindergarten Screener
  - WIDA MODEL Online/Paper
  - Kindergarten MODEL
  - ACCESS for ELs Online/Paper
  - Kindergarten ACCESS
  - Alternate ACCESS for ELLs



# 2022-23 WIDA AMS Site ID File

- The WIDA AMS Site ID file is used to collect LEA/school names, addresses and Test Coordinator contact information for all schools participating in ACCESS.
- The information collected will be used to ship test materials and student score reports directly to schools.
- The file layout was released to LEAs in the **Oct. 4** NGA Bulletin. LEAs have a deadline to complete and submit a file layout to OSSE by **Oct. 28**.
- OSSE will use the point of contact information from the 2021-22 Site ID file if an LEA does not submit data this year.

# Pre-ID Assessment Quickbase App

- Before testing, LEAs need to confirm the universe of students identified to take ACCESS for ELLs and Alternate ACCESS. OSSE will generate a list of students to register for ACCESS based on who is identified as an EL.
- ACCESS for ELLs Pre-ID Assessment Quickbase application will open **mid-November** for LEAs to register students for the ACCESS assessments. LEAs will need to:
  - Verify student demographic information for students taking ACCESS
  - Indicate required accommodations, if warranted
  - Indicate which mode of administration is required (online or paper)
- Pre-ID Assessment Quickbase application closes **mid-December**.
- Additional information will be released via NGA bulletins prior to the Quickbase application release.

# 2022-2023 ACCESS Trainings

Training	Summary	Date
<b>ACCESS Test Administrator</b> Training	Virtual webinar focusing on TA responsibilities and data management during ACCESS administration.	<b>Thu, Jan. 12, 2023</b> <b>1-2:30 p.m.</b>
<b>ACCESS Test Coordinator</b> Training	Virtual webinar focusing on TC responsibilities and data management during ACCESS administration.	<b>Fri, Jan. 13, 2023</b> <b>1-2:30 p.m.</b>

# Alternate ACCESS Field Test

- **Who?** Any student taking the Alternate ACCESS assessment is required to take the field test. This includes Kindergarten. Individualized Education Program (IEP) teams will make the determinations for K-2 students participating in Alternate ACCESS and the field test.
- **When?** The field test should be administered **after** the completion of the Alt ACCESS test, during the statewide administration window. **The field test is a secure testing event.** Plans for administration of the field test should be contained in the School Test Security Plan for Alt ACCESS.
- **How long?** The field test will be similar in length to the Alt ACCESS. Each of the four domains (Listening, Reading, Speaking and Writing) is included, and like Alt ACCESS each domain can take up to 20 minutes to administer, for a total test time of 80 minutes.
- **More info?** OSSE will release additional guidance for the field test in **October**. WIDA is hosting an Alt ACCESS Field Test Q&A Webinar for district/school coordinators and test administrators on **Thursday, Dec. 1 from 2-3:30 p.m. EST**. Go to the [Webinars](#) page in the WIDA Secure Portal for more information.





# National Assessment of Educational Progress (NAEP)

---

*Test Administration*

# National Assessment of Educational Progress (NAEP)

- NAEP is the only assessment that provides a common measure of student achievement across all 50 states plus the District of Columbia, DoDEA schools and Puerto Rico
- NAEP results allow states to look at their progress over time and compare themselves to national public schools, other states or 27 other large urban districts
- NAEP is a congressionally mandated project administered by National Center for Education Statistics (NCES)
- NAEP results are used by elected officials, policymakers and educators to share progress and develop ways to improve education



# NAEP 2023 Field Test

Parameters	Mathematics or Reading
Assessment window	March 20 – April 14, 2023
Number of sessions	2
Session duration	120 minutes
Number of students per session	25
Sampled grade(s)	4, 8, 12
Number of subjects per student	1
Questionnaires	Student questionnaire without COVID section

# NAEP 2022 Results Release

- First release – NAEP Long Term Trends
  - September 1, 2022
  - National results only; Age 9 students
  - First look at pre- and post-pandemic scores
- Second release – Main NAEP Results
  - October 24, 2022
  - State and national results
  - Scores for grade 4 and 8, math and reading
  - [NAEP Scores on OSSE Website](#)

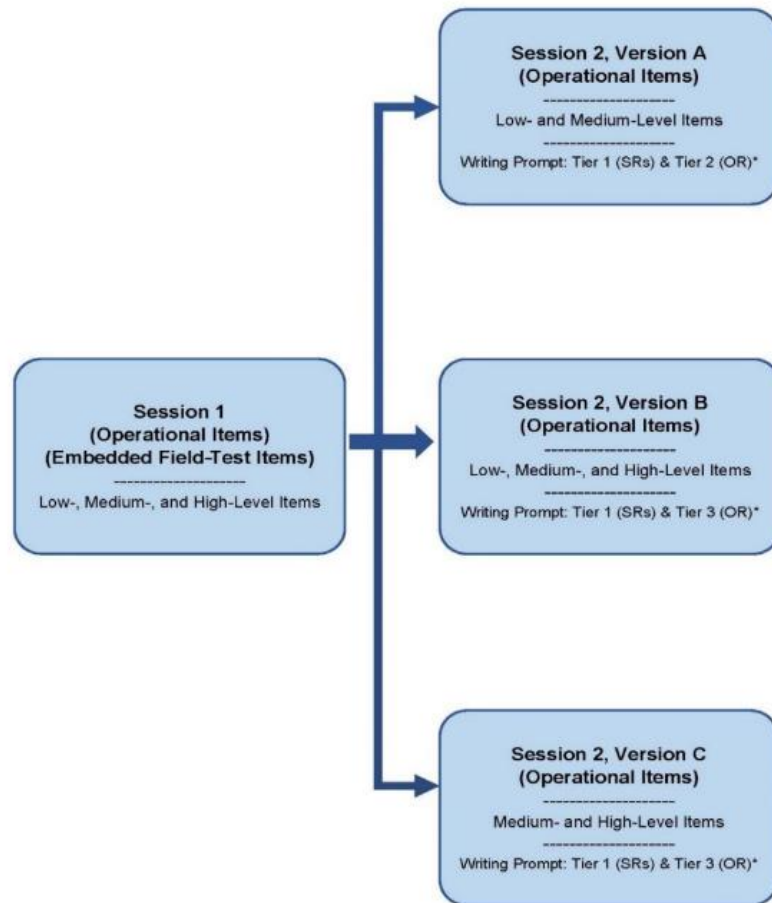


# Multi-State Alternate Assessment (MSAA)

---

*Test Administration*

# Multi-State Alternate Assessment (MSAA)



\*ELA Only, SR=Selected Response, OR=Open Response

- MSAA is a comprehensive assessment system designed to promote increasing higher academic outcomes for students with significant cognitive disabilities in preparation for a broader array of post-secondary outcomes
- Administered annually in the areas of ELA and mathematics to students in grades 3-8 and 11, in 11 states and territories
- The assessment measures what students know and can do in relation to Alternate Achievement Standards
- The stage adaptive design allows students to interact with items that will more accurately reflect the student's abilities

# 2022-23 MSAA Trainings

Training	Summary	Date
<b>MSAA Test Administration Training</b>	Virtual webinar focusing on Test Administration responsibilities for TCs and TAs during MSAA administration.	Wednesday, Feb. 1, 2023
<b>Self-Paced Training</b>	<b>Required</b> self-paced training for TCs and TAs available in the MSAA System	Late February 2023 (Date will be announced)



# Dynamic Learning Maps

*Test Administration*



# Dynamic Learning Maps (DLM) Science Alternate Assessment



- The DLM Science Assessments are built to allow multiple ways for students to demonstrate their knowledge, skills and understanding.
- DLM assessments are computer-based and serve the small proportion of the student population with significant cognitive disabilities.
- During assessment administration, students have access to unique accessibility tools and supports to fit each student's needs and preferences.
- Decisions about the use of these tools and supports are made for each student, with input from an IEP team.

# DLM Science Alternate Assessment Test Design

- DLM is administered to students eligible to take alternate assessments who are in grade 5, grade 8 or enrolled in high school biology.
- DLM reports student performance in four levels:
  - Level 1: Emerging
  - Level 2: Approaching the Target
  - Level 3: At Target
  - Level 4: Advanced

# DLM LEA Test Coordinators

- Each LEA may only designate **one** person as the District Test Coordinator in the DLM portal.
  - New DTC's will need to contact OSSE to be added to the DLM portal.
- DLM District Test Coordinators will be responsible for adding Test Administrators in the [Kite Educator Portal](#).
  - Test Administrators with DC and MD credentials will need to be added by DLM support staff.
- The [District of Columbia DLM webpage](#) has released training videos and supplemental resources to help district test coordinators and data managers implement the DLM alternate assessment for the 2022-23 school year.

# DLM Test Administrators

- Test Administrators are required to complete self-directed modules available through the [DLM Moodle Training Site](#).
  - The DLM Training portal will open on **Monday, Dec. 5th, 2022**.
- Once new TAs have an active account in the Educator Portal, they will be automatically registered for the required training courses within five hours.
  - New TAs will need to complete four modules and achieve a score of 80 percent or higher on each post-module quiz. Returning TAs will have different modules to complete.
- Additional information can be found in the [Required Training Guide](#)

# 2022-23 DLM Trainings

Training	Summary	Date
<b>DLM Test Coordinator Training</b>	Virtual webinar focusing on TC responsibilities and data management during DLM administration.	Wednesday, Jan. 11, 2023 9-11 a.m.
<b>DLM Test Administrator Training</b>	Virtual webinar focusing on TA responsibilities and data management during DLM administration.	Wednesday, Jan. 25, 2023 1-3 p.m.
<b>DLM Test Coordinator Q&amp;A Session</b>	Virtual Q&A session for LEA TC's to ask questions leading up to DLM administration.	Thursday, Feb. 9, 2023 10-11 a.m.

# 2022 Science Reporting – DLM & DC Science

- 2021-22 DLM student reports will be released in conjunction with the DC Science Assessment results release.
- **Early/Mid October:** Student-level results will be available in Phase III of MCC
- **Mid/Late October:** Embargoed release of science results to LEA Heads of School at the individual, school, LEA and sector levels
- All science data will be public in the November DC Report Card release



# PARCC Assessment

*Test Administration*

# The PARCC Assessment



The Partnership for Assessment of Readiness for College and Careers (PARCC) is the District of Columbia's annual assessment of mathematics and English language arts/literacy (ELA), based on the [Common Core State Standards \(CCSS\)](#). These assessments measure the knowledge and skills that matter most for students — understanding complex texts, evidence-based writing, mathematical problem-solving — all skills that lead to confidence and success in key academic areas. [Students in grades 3 through 8 and high school take state assessments](#) in ELA and mathematics online each spring.



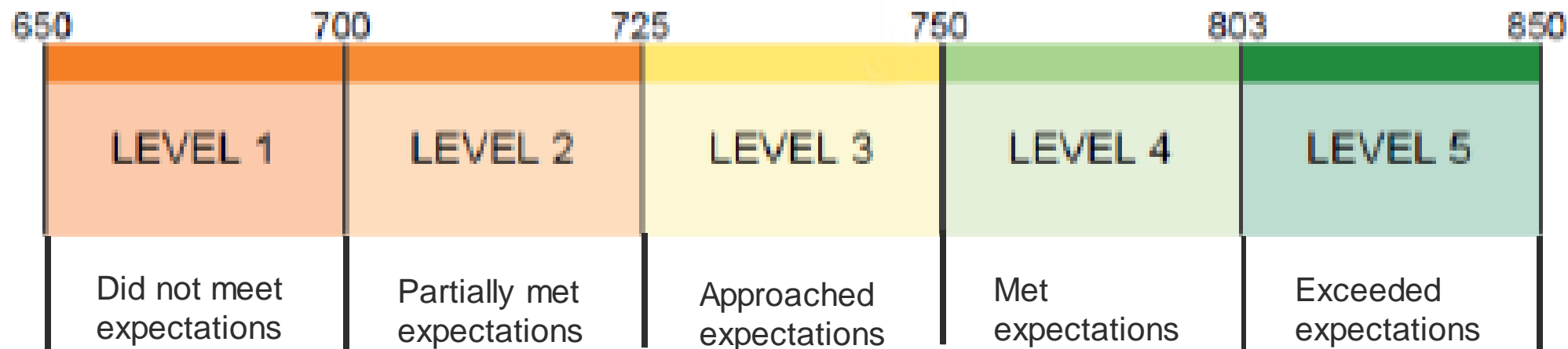
# PARCC Testing Times and Field Test Units

Grade	PARCC Math		PARCC ELA	
	Number of Units	Unit Testing Time	Number of Units	Unit Testing Time
3	3	60 minutes	2	75 minutes
4 – 8	3	60 minutes	2	90 minutes
High School*	2	90 minutes	2	90 minutes

\*Includes the math assessments for Algebra I, Geometry, Algebra II and the ELA assessments for grades 9 (ELA I) and 10 (ELA II).

Note: PARCC math field test items will be embedded throughout the units. **ELA will have an additional field test unit in grades 5, 8 and 10 (ELA II).**

# PARCC Performance Levels



Students' scores fall into one of five different performance levels, each describing how well the student met the expectations for their grade level/course: **did not yet meet expectations**, **partially met expectations**, **approached expectations**, **met expectations** and **exceeded expectations**.

Levels 4 and 5 indicate being **on track** for the next grade level and to leave high school college and career ready.

# PARCC Assessment Resources

- [Common Core State Standards](#)
- PARCC [ELA](#) and [Mathematics](#) Design: Evidence Tables, Claim Structures and Blueprints
- [Released PARCC Items](#)
- PARCC [ELA Practice Tests](#) and [Math Practice Tests](#)
- Additional Resources can be found on the [PARCC webpage](#), the [Assessment Results page](#) and the [Test Coordinator Resources webpage](#).

## Claims Structure\*: Grade 3

**Master Claim:** On-Track for college and career readiness. The degree to which a student is college and career ready (or "on-track" to being ready) in mathematics. The student solves grade-level /course-level problems in mathematics as set forth in the Standards for Mathematical Content with connections to the Standards for Mathematical Practice.

**Sub-Claim A: Major Content<sup>1</sup> with Connections to Practices**  
The student solves problems involving the Major Content<sup>1</sup> for her grade/course with connections to the Standards for Mathematical Practice.

28 - 30 points

**Sub-Claim B: Additional & Supporting Content<sup>2</sup> with Connections to Practices**  
The student solves problems involving the Additional and Supporting Content<sup>2</sup> for her grade/course with connections to the Standards for Mathematical Practice.

10 - 12 points

**Sub-Claim C: Highlighted Practices MP.3,6 with Connections to Content<sup>3</sup> (expressing mathematical reasoning)**  
The student expresses grade/course-level appropriate mathematical reasoning by constructing viable arguments, critiquing the reasoning of others, and/or attending to precision when making mathematical statements.

14 points

**Sub-Claim D: Highlighted Practice MP.4 with Connections to Content (modeling/application)**  
The student solves real-world problems with a degree of difficulty appropriate to the grade/course by applying knowledge and skills articulated in the standards for the current grade/course (or for more complex problems, knowledge and skills articulated in the standards for previous grades/courses), *engaging particularly in the Modeling practice*, and where helpful making sense of problems and persevering to solve them (MP. 1), reasoning abstractly and quantitatively (MP. 2), using appropriate tools strategically (MP.5), looking for and making use of structure (MP.7), and/or looking for and expressing regularity in repeated reasoning (MP.8).

12 points

**Total Exam  
Score Points:  
66 points**

<sup>1</sup> For the purposes of the PARCC Mathematics assessments, the Major Content in a grade/course is determined by that grade level's Major Clusters as identified in the *PARCC Model Content Frameworks v.3.0 for Mathematics*. Note that tasks on PARCC assessments providing evidence for this claim will sometimes require the student to apply the knowledge, skills, and understandings from across several Major Clusters.

<sup>2</sup> The Additional and Supporting Content in a grade/course is determined by that grade level's Additional and Supporting Clusters as identified in the *PARCC Model Content Frameworks v.3.0 for Mathematics*.

<sup>3</sup> For Grades 3-8, Sub-Claim C includes only Major Content.

**Grade 8  
English Language Arts/Literacy  
Literary Analysis Task**

**2019 Released Items**

# 2022-23 PARCC/DC Science Trainings

Training	Date/Time	Location
PARCC & DC Science LEA Test Coordinator Training/ PearsonAccessNext (PAN) 101	Tuesday, Dec. 14, 2022 1-3 p.m.	In-Person
	Tuesday, Jan. 10, 2023 10 a.m.-12 p.m.	Webinar
PARCC & DC Science Assessment Accommodations Webinar	Tuesday, Jan. 24, 2023 1-3 p.m.	In-Person
	Tuesday, Jan. 31, 2023 10 a.m.-12 p.m.	Webinar

# 2022-23 PARCC/DC Science Trainings

Training	Date/Time	Location
PARCC & DC Science SR/PNP Workshop	Wednesday, Feb. 8, 2023 1-3 p.m.	In-Person
	Tuesday, Feb. 14, 2023 10 a.m.-12 p.m.	
PARCC & DC Science Technology Coordinator Training	Thursday, Feb. 16, 2023 1-3 p.m.	Webinar

# 2022-23 PARCC/DC Science Trainings

Training	Date and Time	Location
Technical Assistance during PARCC/DC Science Testing	Thursday, Mar. 16, 2023 1-3 p.m.	Webinar
PARCC & DC Science Assessment Closeout Procedures	Thursday, May 11, 2023 10 a.m.-12 p.m.	Webinar



# PARCC & DC Science Test Development Events

Educators and academic leaders from the District of Columbia attend annual PARCC and DC Science Assessment development events to help construct assessment items, make scoring decisions and develop test forms.

Applications to represent OSSE and the District of Columbia at these events will be open through **Oct. 28, 2022**. [Click here](#) to access the application.



# DC Science Assessment

*Test Administration*



# Designed for the Next Generation Science Standards (NGSS)

## DC Science

The District of Columbia Assessment of  
the Next Generation Science Standards

- The Next Generation Science Standards (NGSS) are a set of rigorous K–12 science standards that were developed by states, for states. The NGSS identify scientific and engineering practices (SEPs), crosscutting concepts (CCCs) and disciplinary core ideas (DCIs) in science that all K–12 students should master in order to prepare for success in college and 21st-century careers.
- The District adopted the NGSS in 2014 for implementation at all K-12 schools. Implementation of new standards required shifts and advancements in science instruction and the development of new assessments including general assessments and alternate assessments for students with the most significant cognitive disabilities.

# The Multiple Dimensions of NGSS

- Disciplinary Core Ideas (DCI) – Apply content knowledge and skills to make sense of phenomena
- Science and Engineering Practice (SEP) – Do what scientists do: Investigate, evaluate, reason scientifically, communicate, etc.
- Crosscutting Concepts (CCC) – Connect ideas across disciplines
- Engineering Design – Address problems and propose solutions



# DC Science Grades/Courses Assessed

## Grade 5

- Assessment targets NGSS Performance Expectations in grades 3-5
- Addresses Physical Sciences, Life Sciences, Earth and Space Sciences

## Grade 8

- Assessment targets middle school NGSS Performance Expectations
- Addresses Physical Sciences, Life Sciences, Earth and Space Sciences

## High School Biology

- Assessment targets high school life science NGSS Performance Expectations
- Addresses Life Sciences

# DC Science Assessment Structure

- Administered in four 45-minute units
- Each unit includes three item clusters. Items in a given cluster are designed around a phenomenon or problem and presented with a common stimulus.
- Stimuli are designed to address the phenomenon and provide the context and focus for the item clusters.
- More information regarding test design and grade-level blueprints can be found on the [OSSE DC Science Assessment website](#).

# DC Science Performance Levels

Met or exceeded  
expectations of the  
NGSS for the  
grade/course

Scale Score 450

DC Science Performance Levels	
Level 4	Exceeded Expectations
Level 3	Met Expectations
Level 2	Approached Expectations
Level 1	Partially Met Expectations

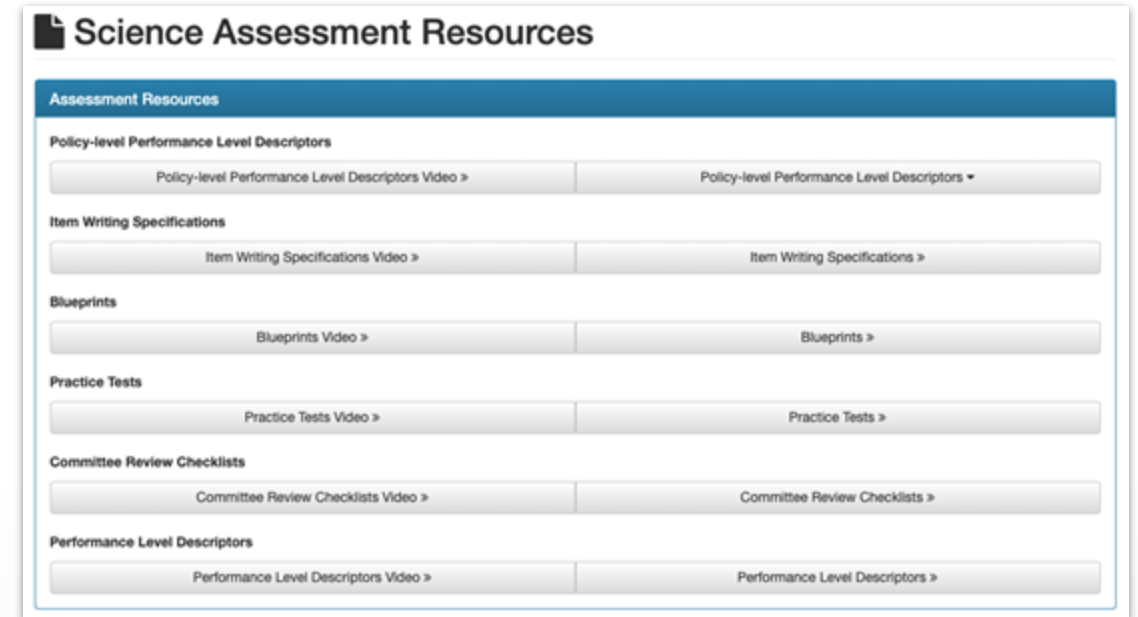
Note: The DC Science Assessment is reported on a scale of 300-600.

Reminder: The 2021-22 DC Science Results release is scheduled for November

# DC Science Assessment Resources

Each includes an introductory video with a brief description of the resource and its intended use:

- Policy-Level Performance Level Descriptors
- Item Writing Specifications
- Blueprints
- Practice Tests
- Committee Review Checklists
- Performance Level Descriptors
- Classroom Assessment Guides



<https://dc.mypearsonsupport.com/scienceAssessmentResources/>



# **PARCC and DC Science Test Administration Updates**

---

*Test Administration*

# PARCC & DC Science Administration Updates

- The Student Registration and Personal Needs Profile (SR/PNP) includes demographic field updates to better align to the categories and language OSSE uses for PARCC and DC Science reporting. SR/PNP verification and upload begins January 2023.
- LEAs can opt out of paper manuals for PARCC and DC Science if desired. Initial school-level materials will arrive March 2023.
- Shipments of secure materials (test booklets, answer sheets, etc.) will be sent as individual items. The additional order window for secure materials closes May 2023.



# PARCC & DC Science Administration Updates- New for 2022-2023!



## 2022-2023 Form to Return Secure Test Materials

### Instructions:

1. Follow the instructions in the *Test Coordinator Manual* to determine which secure test materials must be returned to Pearson.  
Note: All secure materials will have either a serial number or security barcode.
2. Complete all sections of this form and maintain a copy in your school records file.
3. Submit this form to your PARCC/DC Science LEA Test Coordinator.

Contact Name:

Role:

School Name:

School Code:

LEA Name:

LEA Code:

Secure Material/Subject/Grade	Assessment	Quantity	Serial Number/Security Barcode Range	UPS Tracking Number	UPS Pickup Date
Example: Grade 5 Human Reader Script		2	12345-12346	1Z1Y12346789123	06/10/23

- Prior to returning secure materials to Pearson, School Test Coordinators will complete a form documenting the items returned, shipment pickup date and tracking information. This form will then be submitted to LEA Test Coordinators and kept in the schools' testing files.

# PearsonAccess<sup>Next</sup> (PAN) Updates for 2022-23

- [PearsonAccess<sup>Next</sup>](#) is scheduled to open to LEAs in January.
- User Import/Export update: New fields have been added to the file layout to accommodate both deleted and disabled users. The import file also can restore a deleted user through the import.
- Dashboard update: New drill down functionality added. Users can now hover on the dashboard graph to show the number of students in that session. Clicking on the graph will provide the status of each test in that category.
- "Students in session" dashboard has been expanded so that larger size sessions can be seen than were previously allowed.

# PAN Updates (continued)

- Organization participation messaging has been updated to provide more information. Users will now see "No participating organizations found" if the organization does not exist. The "No matches found" message will be displayed if no results are available.
- TTS indicator is now displayed next to student names in the "Students in Session" and "Student Session Roster" pages.

# TestNav8 Updates

- Current version: TestNav8.19.275
- TestNav has an inactivity timer set at 20 minutes. If a student device does not register any activity (typing, touchpad, scrolling) for 20 minutes, the student test will be automatically logged out. The system will still allow the student to log back into the test with their username and password.

# PARCC & DC Science Resources

- Updated administration resources will be posted to the [Test Coordinator Resources webpage](#)
- Test Coordinator and Test Administrator manuals will be available [online](#) in January and will arrive at schools in March. LEAs will have the option to opt out of paper-based manuals in PAN this year.
- The [PearsonAccessNext](#) and [TestNav8](#) User Guides are available
  - Test Administration Information: <https://dc.mypearsonsupport.com/>
  - Practice Tests: <https://dc.mypearsonsupport.com/practice-tests/>
  - TestNav8 Download: <https://download.testnav.com/>



# Assessment Participation and Performance Policy for 2022-23

---

*Assessment Policy*

# 2022-23 Statewide Assessments

	English Language Arts	Mathematics
<b>PARCC</b>	<ul style="list-style-type: none"> <li>• Grades 3-8</li> <li>• English I and English II</li> </ul>	<ul style="list-style-type: none"> <li>• Grades 3-8**</li> <li>• Algebra I, Geometry, Algebra II</li> </ul>
<b>MSAA</b>	<ul style="list-style-type: none"> <li>• Grades 3-8 and 11</li> </ul>	<ul style="list-style-type: none"> <li>• Grades 3-8 and 11</li> </ul>
	<b>Science</b>	
<b>DC Science</b>	<ul style="list-style-type: none"> <li>• Grades 5, 8 and Biology</li> </ul>	
<b>DLM</b>	<ul style="list-style-type: none"> <li>• Grades 5, 8 and Biology</li> </ul>	
	<b>English Language Proficiency</b>	
<b>ACCESS for ELLs</b>	<ul style="list-style-type: none"> <li>• Grades K-12</li> </ul>	
<b>Alternate ACCESS</b>	<ul style="list-style-type: none"> <li>• Grades 1-12</li> </ul>	

\*\* Students in grades 7 and 8 in mathematics may take advanced high school assessments (e.g., Algebra I/Geometry) if they are enrolled in these courses

# Advanced Middle School Mathematics

- Students in grades 3-8 must take the assessment for the grade in which they are enrolled **unless** students are taking an advanced math course in **grades 7 or 8**. These students may take an advanced math assessment.
- If a student takes an advanced math assessment in middle school, they are **required** to take a higher-level assessment as their requirement in high school.
- Sample pathways:

	Grade 7	Grade 8	Grade 9	Grade 10
Sample Option 1	Grade 7 Math	Algebra I	Geometry	n/a
Sample Option 2	Algebra I	Geometry	Algebra II	n/a

- Note: Students who take advanced math courses may take fewer than two math assessments in high school.



# Alternate Assessment Requirements & Participation

- All students, including students with disabilities, must participate in statewide testing.
- Students with significant cognitive disabilities that meet the required criteria may be eligible to participate in the alternate assessments.
- Alternate assessments include:
  - Multi-State Alternate Assessment (MSAA)
  - Dynamic Learning Maps (DLM)
  - Alternate ACCESS
- The [Alternate Eligibility Process Memo](#) and [Alternate Eligibility Participation Decision Form](#) are available on the [OSSE website](#).
- Applications for alternate assessment eligibility are due to OSSE by **Oct. 14, 2022**

# English Learner Requirements and Participation

- English learner students are required to participate in statewide testing.
- In addition to content assessments, all English learners in grades K-12 must participate in English language proficiency (ELP) assessments annually.
- English learners who have been enrolled in US schools for less than 12 months from the first day of last year's state testing window are exempt from participating in statewide ELA assessments. They are required to participate in ELP testing as well as math and science testing. Performance results from math and science are not reported.
  - Note: This exemption can be used only once.
- Students identified as English learners on a path for a regular diploma in grades K-12 are required to participate in ELP testing regardless of age.

# Additional Participation Scenarios

## Grade/Course Repeaters

- Course repeaters are included in participation and performance reporting.
- Course repeaters are only exempt from testing if they are taking a second required course in the same year. Example:
  - Algebra I (repeat fall); Geometry (new spring) → Geometry assessment (spring)

## High School Transfer Students - Advanced Coursework

- Transfer students who have advanced past coursework aligned to required assessments do not have testing requirements.

## Mid-Year Transfer Students

- Student should take the assessment that best matches the course the student has been enrolled for the majority of instructional time.

# Additional Participation Scenarios (cont.)

## High School Semester/Reduced Schedule

- Students who took a course on a semester or shorter schedule during the 2021-22 school year or summer 2021 will take the associated tests in spring 2022.

## Secondary School and Adult School Participation

- Students taking high school courses with required assessments who are on a path for a regular diploma are required to participate in content testing regardless of age.

# Statewide Assessment Participation Rate Calculation

## Criteria include:

1. Students must be enrolled in a grade/course with a required assessment.
2. Students are continuously enrolled during the school's testing window

--or--

Students are not continuously enrolled during the school's testing window but tested at that school and received a valid score.

## Exceptions:

- Medical exemptions
- Recently arrived English learners

- **Numerator:**

- To be counted as a participant in the numerator, a student must receive a valid score and meet "attemptedness rules."

# Statewide Assessment Participation Rate Calculation

Participation calculation for Grades 3-8: ELA
$\frac{\text{\# of students with a valid summative score in ELA on a required grade-level test}}{\text{\# of students continuously enrolled in grades 3-8 during the school's testing window or students who were not continuously enrolled but tested and received a valid score (except for approved medical exemptions, and first year enrolled ELs when ACCESS is administered)}}$

Participation calculation for Grades 3-8: Math or Science
$\frac{\text{\# of students with a valid summative score in math/science on a required test (grade level or HS EOC for grades 7 and 8 in math)}}{\text{\# of students continuously enrolled in grades 3-8 (math) or grades 5 or 8 (science) during the school's testing window or students who were not continuously enrolled but tested and received a valid score (except for approved medical exemptions)}}$

Participation calculation for HS: ELA
$\frac{\text{\# of students with a valid summative score in ELA on a required test}}{\text{\# of students continuously enrolled during the school's testing window in a course with a required test or students who were not continuously enrolled but tested and received a valid score (except for approved medical exemptions, and first year enrolled ELs when ACCESS is administered)}}$

Participation calculation for HS: Math or Science
$\frac{\text{\# of students with a valid summative score on a required test}}{\text{\# of students continuously enrolled during the school's testing window in a course with a required test or students who were not continuously enrolled but tested and received a valid score (except for approved medical exemptions)}}$

# Statewide Assessment Performance Results Calculation

## Criteria include:

- Students must receive a valid score on a required assessment
  - Results not included for “off-grade,” “off-policy” and “optional” assessments
- Students must be identified as a participant
- Students must be enrolled for the Full Academic Year (FAY)
- FAY determinations are made at the school, LEA and State level
  - Students are deemed FAY if they are enrolled for 85 percent of the instructional days between Enrollment Audit Count Day and the first day of the associated state assessment window

Note: Minimum number of students in a school and/or specific group for aggregating performance is 10.

# Policy Updates for 2022-23 – Follow-Up

- 30-Day School-Level Administration Window
  - OSSE has removed the school-level 30 consecutive day test window restriction
  - LEAs may choose to specify allowable testing dates for their schools
- Teacher of Record
  - The teacher of record may serve as the test administrator for their students without the need of an additional proctor present
  - Proctors are still recommended for testing groups of 15 students or larger



# Policy Updates for 2022-23 – ELP Calculations

- Students who earned composite scores but who took "off-grade" tests will have the opportunity to have their composite scores corrected to reflect expectations for their enrolled grade level
  - Score correction occurs during the DRC pre-reporting data validation window
- Students who receive corrected composite scores are included in the numerator and denominator for participation rates and are included in performance reporting
- Students with corrected scores will be eligible to exit EL services if their corrected composite score is 4.5 or greater (5.0 for kindergarten)
- Students with corrected scores will be included in schools' ACCESS performance and growth calculations
- LEAs should use the data validation window to ensure that all ACCESS takers have the correct EL status and are enrolled



# District of Columbia Test Integrity and Test Security Overview

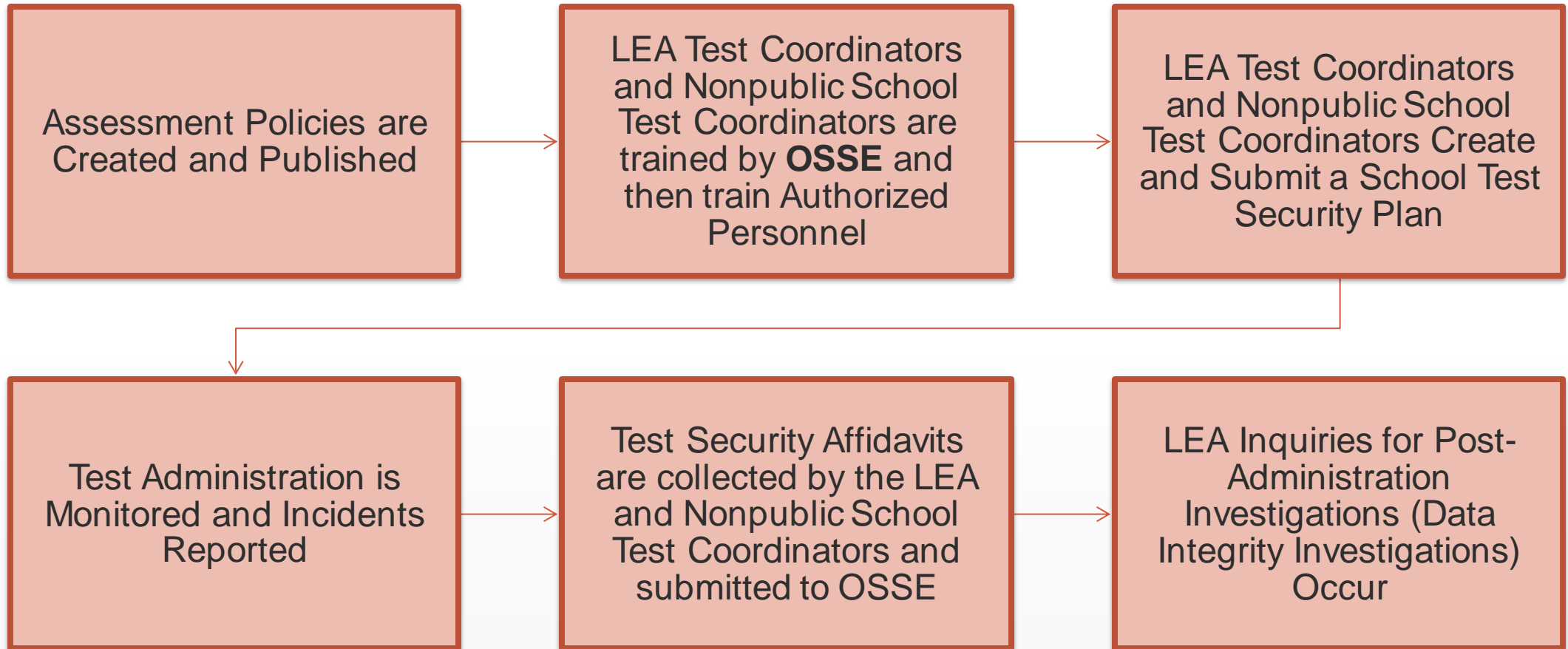
---

*Assessment Policy*

# Vision for Test Security in the District

OSSE's goal is for schools and LEAs to deliver a uniform and equitable statewide assessment program. For assessment to yield fair and accurate results, the assessments must be administered in consistent and standardized conditions; the best way to ensure that occurs is to ensure educators understand and recognize acceptable and unacceptable assessment practices.

# Test Security and Integrity Overview



# Test Security and Test Integrity Affidavits

- LEAs must collect one school-level affidavit for each OSSE-approved school test security plan within **10 business days** after the close of each statewide assessment window.
- An LEA-level affidavit for each program (completed by the LEA Assessment Manager or LEA Test Coordinator) as well as the collected school-level affidavits must be submitted to OSSE with **15 business days** after the close of each statewide assessment window.
  - ACCESS/Alt-ACCESS
  - MSAA/DLM
  - PARCC/DC Science

The image shows a form titled "District of Columbia Districtwide<sup>1</sup> Test Integrity and Test Security Affidavit". It is from the "OFFICE OF STATE SUPERINTENDENT OF EDUCATION" (OSSE). The form includes instructions for completion by the LEA Assessment Manager or LEA Test Coordinator. It contains a table for "LEA/School Information" with fields for Assessment Name(s), LEA name and code, School name and code, Name of person completing this affidavit, and Role. Below the table, there are checkboxes for compliance with the Testing Integrity Act of 2013, OSSE 2022-23 Test Security Guidelines, applicable testing manuals, required training, and test security plans. A section for "Further" compliance includes checkboxes for authorized personnel, security breaches, and secure materials. The form ends with a signature line, a date line, and a footer with contact information and a disclaimer.

**District of Columbia Districtwide<sup>1</sup> Test Integrity and Test Security Affidavit**

Instructions: This form must be completed by the LEA Assessment Manager or LEA Test Coordinator and the School Test Coordinator (including nonpublic School Test Coordinator) for each Districtwide assessment administered. Within 10 business days after the close of each statewide assessment window, the LEA must collect one school-level affidavit for each OSSE-approved school test security plan. Within 15 business days after the close of each statewide assessment window, LEAs must submit all school affidavits and one LEA-level affidavit for each assessment program (ACCESS/Alt-ACCESS, MSAA/DLM, and PARCC/DC Science) to OSSE via the [OSSE Support Tool \(OST\)](#).

**LEA/School Information**  
Refer to your approved school test security plan to complete the information below.

Assessment Name(s)	
LEA name and code	
School name and code	
Name of person completing this affidavit	
Role	LEA Assessment Manager   LEA Test Coordinator   School Test Coordinator

**Please check each box below to indicate compliance.**  
I affirm that to the best of my ability, knowledge and/or belief, my LEA (test integrity coordinator) or school (school test monitor) complied with the following, except as may be described below:

- ☐ The Testing Integrity Act of 2013, as amended<sup>2</sup>
- ☐ OSSE 2022-23 Test Security Guidelines;
- ☐ All applicable testing manuals and test directions;
- ☐ All required State, LEA, and school test integrity training; and
- ☐ The 2022-23 test security plan(s) of my school or schools within my LEA, as appropriate.

Please describe any instances where, to your knowledge/belief, your LEA and/or school did not comply with all applicable laws, regulations, policies and test plans. If you are unaware of any noncompliance, please state "None".

Further, I affirm that to the best of my ability, knowledge and/or belief that:

- ☐ All authorized personnel involved with testing have been provided the Statewide Test Integrity and Security Notification Statement, provided by OSSE;
- ☐ All known security breaches and testing irregularities have been properly reported;
- ☐ All secure and unsecure test materials have been returned, tracked, destroyed or securely recycled in accordance with the directions provided by the test vendor on this date \_\_\_\_\_ and
- ☐ All required school test security plan materials under my purview have been submitted and/or are attached to this affidavit.

I hereby affirm, under penalty of perjury, that the information in this affidavit is based on my personal knowledge or belief and is truthful and accurate.

Signature \_\_\_\_\_ Date \_\_\_\_\_

<sup>1</sup> The terms "Districtwide" and "Statewide" with regard to assessments are interchangeable as they relate to the assessments covered under federal accountability requirements and the Test Integrity Act of 2013.  
<sup>2</sup> 16 D.C. Code § 38-22.01, 38-22.02, 38-22.03, 38-22.04, 38-22.05, 38-22.06, 38-22.07, 38-22.08, 38-22.09, 38-22.10, 38-22.11, 38-22.12, 38-22.13, 38-22.14, 38-22.15, 38-22.16, 38-22.17, 38-22.18, 38-22.19, 38-22.20, 38-22.21, 38-22.22, 38-22.23, 38-22.24, 38-22.25, 38-22.26, 38-22.27, 38-22.28, 38-22.29, 38-22.30, 38-22.31, 38-22.32, 38-22.33, 38-22.34, 38-22.35, 38-22.36, 38-22.37, 38-22.38, 38-22.39, 38-22.40, 38-22.41, 38-22.42, 38-22.43, 38-22.44, 38-22.45, 38-22.46, 38-22.47, 38-22.48, 38-22.49, 38-22.50, 38-22.51, 38-22.52, 38-22.53, 38-22.54, 38-22.55, 38-22.56, 38-22.57, 38-22.58, 38-22.59, 38-22.60, 38-22.61, 38-22.62, 38-22.63, 38-22.64, 38-22.65, 38-22.66, 38-22.67, 38-22.68, 38-22.69, 38-22.70, 38-22.71, 38-22.72, 38-22.73, 38-22.74, 38-22.75, 38-22.76, 38-22.77, 38-22.78, 38-22.79, 38-22.80, 38-22.81, 38-22.82, 38-22.83, 38-22.84, 38-22.85, 38-22.86, 38-22.87, 38-22.88, 38-22.89, 38-22.90, 38-22.91, 38-22.92, 38-22.93, 38-22.94, 38-22.95, 38-22.96, 38-22.97, 38-22.98, 38-22.99, 38-23.00, 38-23.01, 38-23.02, 38-23.03, 38-23.04, 38-23.05, 38-23.06, 38-23.07, 38-23.08, 38-23.09, 38-23.10, 38-23.11, 38-23.12, 38-23.13, 38-23.14, 38-23.15, 38-23.16, 38-23.17, 38-23.18, 38-23.19, 38-23.20, 38-23.21, 38-23.22, 38-23.23, 38-23.24, 38-23.25, 38-23.26, 38-23.27, 38-23.28, 38-23.29, 38-23.30, 38-23.31, 38-23.32, 38-23.33, 38-23.34, 38-23.35, 38-23.36, 38-23.37, 38-23.38, 38-23.39, 38-23.40, 38-23.41, 38-23.42, 38-23.43, 38-23.44, 38-23.45, 38-23.46, 38-23.47, 38-23.48, 38-23.49, 38-23.50, 38-23.51, 38-23.52, 38-23.53, 38-23.54, 38-23.55, 38-23.56, 38-23.57, 38-23.58, 38-23.59, 38-23.60, 38-23.61, 38-23.62, 38-23.63, 38-23.64, 38-23.65, 38-23.66, 38-23.67, 38-23.68, 38-23.69, 38-23.70, 38-23.71, 38-23.72, 38-23.73, 38-23.74, 38-23.75, 38-23.76, 38-23.77, 38-23.78, 38-23.79, 38-23.80, 38-23.81, 38-23.82, 38-23.83, 38-23.84, 38-23.85, 38-23.86, 38-23.87, 38-23.88, 38-23.89, 38-23.90, 38-23.91, 38-23.92, 38-23.93, 38-23.94, 38-23.95, 38-23.96, 38-23.97, 38-23.98, 38-23.99, 38-24.00, 38-24.01, 38-24.02, 38-24.03, 38-24.04, 38-24.05, 38-24.06, 38-24.07, 38-24.08, 38-24.09, 38-24.10, 38-24.11, 38-24.12, 38-24.13, 38-24.14, 38-24.15, 38-24.16, 38-24.17, 38-24.18, 38-24.19, 38-24.20, 38-24.21, 38-24.22, 38-24.23, 38-24.24, 38-24.25, 38-24.26, 38-24.27, 38-24.28, 38-24.29, 38-24.30, 38-24.31, 38-24.32, 38-24.33, 38-24.34, 38-24.35, 38-24.36, 38-24.37, 38-24.38, 38-24.39, 38-24.40, 38-24.41, 38-24.42, 38-24.43, 38-24.44, 38-24.45, 38-24.46, 38-24.47, 38-24.48, 38-24.49, 38-24.50, 38-24.51, 38-24.52, 38-24.53, 38-24.54, 38-24.55, 38-24.56, 38-24.57, 38-24.58, 38-24.59, 38-24.60, 38-24.61, 38-24.62, 38-24.63, 38-24.64, 38-24.65, 38-24.66, 38-24.67, 38-24.68, 38-24.69, 38-24.70, 38-24.71, 38-24.72, 38-24.73, 38-24.74, 38-24.75, 38-24.76, 38-24.77, 38-24.78, 38-24.79, 38-24.80, 38-24.81, 38-24.82, 38-24.83, 38-24.84, 38-24.85, 38-24.86, 38-24.87, 38-24.88, 38-24.89, 38-24.90, 38-24.91, 38-24.92, 38-24.93, 38-24.94, 38-24.95, 38-24.96, 38-24.97, 38-24.98, 38-24.99, 38-25.00, 38-25.01, 38-25.02, 38-25.03, 38-25.04, 38-25.05, 38-25.06, 38-25.07, 38-25.08, 38-25.09, 38-25.10, 38-25.11, 38-25.12, 38-25.13, 38-25.14, 38-25.15, 38-25.16, 38-25.17, 38-25.18, 38-25.19, 38-25.20, 38-25.21, 38-25.22, 38-25.23, 38-25.24, 38-25.25, 38-25.26, 38-25.27, 38-25.28, 38-25.29, 38-25.30, 38-25.31, 38-25.32, 38-25.33, 38-25.34, 38-25.35, 38-25.36, 38-25.37, 38-25.38, 38-25.39, 38-25.40, 38-25.41, 38-25.42, 38-25.43, 38-25.44, 38-25.45, 38-25.46, 38-25.47, 38-25.48, 38-25.49, 38-25.50, 38-25.51, 38-25.52, 38-25.53, 38-25.54, 38-25.55, 38-25.56, 38-25.57, 38-25.58, 38-25.59, 38-25.60, 38-25.61, 38-25.62, 38-25.63, 38-25.64, 38-25.65, 38-25.66, 38-25.67, 38-25.68, 38-25.69, 38-25.70, 38-25.71, 38-25.72, 38-25.73, 38-25.74, 38-25.75, 38-25.76, 38-25.77, 38-25.78, 38-25.79, 38-25.80, 38-25.81, 38-25.82, 38-25.83, 38-25.84, 38-25.85, 38-25.86, 38-25.87, 38-25.88, 38-25.89, 38-25.90, 38-25.91, 38-25.92, 38-25.93, 38-25.94, 38-25.95, 38-25.96, 38-25.97, 38-25.98, 38-25.99, 38-26.00, 38-26.01, 38-26.02, 38-26.03, 38-26.04, 38-26.05, 38-26.06, 38-26.07, 38-26.08, 38-26.09, 38-26.10, 38-26.11, 38-26.12, 38-26.13, 38-26.14, 38-26.15, 38-26.16, 38-26.17, 38-26.18, 38-26.19, 38-26.20, 38-26.21, 38-26.22, 38-26.23, 38-26.24, 38-26.25, 38-26.26, 38-26.27, 38-26.28, 38-26.29, 38-26.30, 38-26.31, 38-26.32, 38-26.33, 38-26.34, 38-26.35, 38-26.36, 38-26.37, 38-26.38, 38-26.39, 38-26.40, 38-26.41, 38-26.42, 38-26.43, 38-26.44, 38-26.45, 38-26.46, 38-26.47, 38-26.48, 38-26.49, 38-26.50, 38-26.51, 38-26.52, 38-26.53, 38-26.54, 38-26.55, 38-26.56, 38-26.57, 38-26.58, 38-26.59, 38-26.60, 38-26.61, 38-26.62, 38-26.63, 38-26.64, 38-26.65, 38-26.66, 38-26.67, 38-26.68, 38-26.69, 38-26.70, 38-26.71, 38-26.72, 38-26.73, 38-26.74, 38-26.75, 38-26.76, 38-26.77, 38-26.78, 38-26.79, 38-26.80, 38-26.81, 38-26.82, 38-26.83, 38-26.84, 38-26.85, 38-26.86, 38-26.87, 38-26.88, 38-26.89, 38-26.90, 38-26.91, 38-26.92, 38-26.93, 38-26.94, 38-26.95, 38-26.96, 38-26.97, 38-26.98, 38-26.99, 38-27.00, 38-27.01, 38-27.02, 38-27.03, 38-27.04, 38-27.05, 38-27.06, 38-27.07, 38-27.08, 38-27.09, 38-27.10, 38-27.11, 38-27.12, 38-27.13, 38-27.14, 38-27.15, 38-27.16, 38-27.17, 38-27.18, 38-27.19, 38-27.20, 38-27.21, 38-27.22, 38-27.23, 38-27.24, 38-27.25, 38-27.26, 38-27.27, 38-27.28, 38-27.29, 38-27.30, 38-27.31, 38-27.32, 38-27.33, 38-27.34, 38-27.35, 38-27.36, 38-27.37, 38-27.38, 38-27.39, 38-27.40, 38-27.41, 38-27.42, 38-27.43, 38-27.44, 38-27.45, 38-27.46, 38-27.47, 38-27.48, 38-27.49, 38-27.50, 38-27.51, 38-27.52, 38-27.53, 38-27.54, 38-27.55, 38-27.56, 38-27.57, 38-27.58, 38-27.59, 38-27.60, 38-27.61, 38-27.62, 38-27.63, 38-27.64, 38-27.65, 38-27.66, 38-27.67, 38-27.68, 38-27.69, 38-27.70, 38-27.71, 38-27.72, 38-27.73, 38-27.74, 38-27.75, 38-27.76, 38-27.77, 38-27.78, 38-27.79, 38-27.80, 38-27.81, 38-27.82, 38-27.83, 38-27.84, 38-27.85, 38-27.86, 38-27.87, 38-27.88, 38-27.89, 38-27.90, 38-27.91, 38-27.92, 38-27.93, 38-27.94, 38-27.95, 38-27.96, 38-27.97, 38-27.98, 38-27.99, 38-28.00, 38-28.01, 38-28.02, 38-28.03, 38-28.04, 38-28.05, 38-28.06, 38-28.07, 38-28.08, 38-28.09, 38-28.10, 38-28.11, 38-28.12, 38-28.13, 38-28.14, 38-28.15, 38-28.16, 38-28.17, 38-28.18, 38-28.19, 38-28.20, 38-28.21, 38-28.22, 38-28.23, 38-28.24, 38-28.25, 38-28.26, 38-28.27, 38-28.28, 38-28.29, 38-28.30, 38-28.31, 38-28.32, 38-28.33, 38-28.34, 38-28.35, 38-28.36, 38-28.37, 38-28.38, 38-28.39, 38-28.40, 38-28.41, 38-28.42, 38-28.43, 38-28.44, 38-28.45, 38-28.46, 38-28.47, 38-28.48, 38-28.49, 38-28.50, 38-28.51, 38-28.52, 38-28.53, 38-28.54, 38-28.55, 38-28.56, 38-28.57, 38-28.58, 38-28.59, 38-28.60, 38-28.61, 38-28.62, 38-28.63, 38-28.64, 38-28.65, 38-28.66, 38-28.67, 38-28.68, 38-28.69, 38-28.70, 38-28.71, 38-28.72, 38-28.73, 38-28.74, 38-28.75, 38-28.76, 38-28.77, 38-28.78, 38-28.79, 38-28.80, 38-28.81, 38-28.82, 38-28.83, 38-28.84, 38-28.85, 38-28.86, 38-28.87, 38-28.88, 38-28.89, 38-28.90, 38-28.91, 38-28.92, 38-28.93, 38-28.94, 38-28.95, 38-28.96, 38-28.97, 38-28.98, 38-28.99, 38-29.00, 38-29.01, 38-29.02, 38-29.03, 38-29.04, 38-29.05, 38-29.06, 38-29.07, 38-29.08, 38-29.09, 38-29.10, 38-29.11, 38-29.12, 38-29.13, 38-29.14, 38-29.15, 38-29.16, 38-29.17, 38-29.18, 38-29.19, 38-29.20, 38-29.21, 38-29.22, 38-29.23, 38-29.24, 38-29.25, 38-29.26, 38-29.27, 38-29.28, 38-29.29, 38-29.30, 38-29.31, 38-29.32, 38-29.33, 38-29.34, 38-29.35, 38-29.36, 38-29.37, 38-29.38, 38-29.39, 38-29.40, 38-29.41, 38-29.42, 38-29.43, 38-29.44, 38-29.45, 38-29.46, 38-29.47, 38-29.48, 38-29.49, 38-29.50, 38-29.51, 38-29.52, 38-29.53, 38-29.54, 38-29.55, 38-29.56, 38-29.57, 38-29.58, 38-29.59, 38-29.60, 38-29.61, 38-29.62, 38-29.63, 38-29.64, 38-29.65, 38-29.66, 38-29.67, 38-29.68, 38-29.69, 38-29.70, 38-29.71, 38-29.72, 38-29.73, 38-29.74, 38-29.75, 38-29.76, 38-29.77, 38-29.78, 38-29.79, 38-29.80, 38-29.81, 38-29.82, 38-29.83, 38-29.84, 38-29.85, 38-29.86, 38-29.87, 38-29.88, 38-29.89, 38-29.90, 38-29.91, 38-29.92, 38-29.93, 38-29.94, 38-29.95, 38-29.96, 38-29.97, 38-29.98, 38-29.99, 38-30.00, 38-30.01, 38-30.02, 38-30.03, 38-30.04, 38-30.05, 38-30.06, 38-30.07, 38-30.08, 38-30.09, 38-30.10, 38-30.11, 38-30.12, 38-30.13, 38-30.14, 38-30.15, 38-30.16, 38-30.17, 38-30.18, 38-30.19, 38-30.20, 38-30.21, 38-30.22, 38-30.23, 38-30.24, 38-30.25, 38-30.26, 38-30.27, 38-30.28, 38-30.29, 38-30.30, 38-30.31, 38-30.32, 38-30.33, 38-30.34, 38-30.35, 38-30.36, 38-30.37, 38-30.38, 38-30.39, 38-30.40, 38-30.41, 38-30.42, 38-30.43, 38-30.44, 38-30.45, 38-30.46, 38-30.47, 38-30.48, 38-30.49, 38-30.50, 38-30.51, 38-30.52, 38-30.53, 38-30.54, 38-30.55, 38-30.56, 38-30.57, 38-30.58, 38-30.59, 38-30.60, 38-30.61, 38-30.62, 38-30.63, 38-30.64, 38-30.65, 38-30.66, 38-30.67, 38-30.68, 38-30.69, 38-30.70, 38-30.71, 38-30.72, 38-30.73, 38-30.74, 38-30.75, 38-30.76, 38-30.77, 38-30.78, 38-30.79, 38-30.80, 38-30.81, 38-30.82, 38-30.83, 38-30.84, 38-30.85, 38-30.86, 38-30.87, 38-30.88, 38-30.89, 38-30.90, 38-30.91, 38-30.92, 38-30.93, 38-30.94, 38-30.95, 38-30.96, 38-30.97, 38-30.98, 38-30.99, 38-31.00, 38-31.01, 38-31.02, 38-31.03, 38-31.04, 38-31.05, 38-31.06, 38-31.07, 38-31.08, 38-31.09, 38-31.10, 38-31.11, 38-31.12, 38-31.13, 38-31.14, 38-31.15, 38-31.16, 38-31.17, 38-31.18, 38-31.19, 38-31.20, 38-31.21, 38-31.22, 38-31.23, 38-31.24, 38-31.25, 38-31.26, 38-31.27, 38-31.28, 38-31.29, 38-31.30, 38-31.31, 38-31.32, 38-31.33, 38-31.34, 38-31.35, 38-31.36, 38-31.37, 38-31.38, 38-31.39, 38-31.40, 38-31.41, 38-31.42, 38-31.43, 38-31.44, 38-31.45, 38-31.46, 38-31.47, 38-31.48, 38-31.49, 38-31.50, 38-31.51, 38-31.52, 38-31.53, 38-31.54, 38-31.55, 38-31.56, 38-31.57, 38-31.58, 38-31.59, 38-31.60, 38-31.61, 38-31.62, 38-31.63, 38-31.64, 38-31.65, 38-31.66, 38-31.67, 38-31.68, 38-31.69, 38-31.70, 38-31.71, 38-31.72, 38-31.73, 38-31.74, 38-31.75, 38-31.76, 38-31.77, 38-31.78, 38-31.79, 38-31.80, 38-31.81, 38-31.82, 38-31.83, 38-31.84, 38-31.85, 38-31.86, 38-31.87, 38-31.88, 38-31.89, 38-31.90, 38-31.91, 38-31.92, 38-31.93, 38-31.94, 38-31.95, 38-31.96, 38-31.97, 38-31.98, 38-31.99, 38-32.00, 38-32.01, 38-32.02, 38-32.03, 38-32.04, 38-32.05, 38-32.06, 38-32.07, 38-32.08, 38-32.09, 38-32.10, 38-32.11, 38-32.12, 38-32.13, 38-32.14, 38-32.15, 38-32.16, 38-32.17, 38-32.18, 38-32.19, 38-32.20, 38-32.21, 38-32.22, 38-32.23, 38-32.24, 38-32.25, 38-32.26, 38-32.27, 38-32.28, 38-32.29, 38-32.30, 38-32.31, 38-32.32, 38-32.33, 38-32.34, 38-32.35, 38-32.36, 38-32.37, 38-32.38, 38-32.39, 38-32.40, 38-32.41, 38-32.42, 38-32.43, 38-32.44, 38-32.45, 38-32.46, 38-32.47, 38-32.48, 38-32.49, 38-32.50, 38-32.51, 38-32.52, 38-32.53, 38-32.54, 38-32.55, 38-32.56, 38-32.57, 38-32.58, 38-32.59, 38-32.60, 38-32.61, 38-32.62, 38-32.63, 38-32.64, 38-32.65, 38-32.66, 38-32.67, 38-32.68, 38-32.69, 38-32.70, 38-32.71, 38-32.72, 38-32.73, 38-32.74, 38-32.75, 38-32.76, 38-32.77, 38-32.78, 38-32.79, 38-32.80, 38-32.81, 38-32.82, 38-32.83, 38-32.84, 38-32.85, 38-32.86, 38-32.87, 38-32.88, 38-32.89, 38-32.90, 38-32.91, 38-32.92, 38-32.93, 38-32.94, 38-32.95, 38-32.96, 38-32.97, 38-32.98, 38-32.99, 38-33.00, 38-33.01, 38-33.02, 38-33.03, 38-33.04, 38-33.05, 38-33.06, 38-33.07, 38-33.08, 38-33.09, 38-33.10, 3

# Test Security 2022-23: Major Tasks and Dates

Task	Date(s)
<b>OSSE LEA Test Security Training</b> <i>LEA Test Coordinators must complete the training and score an 80 percent or higher on the quiz.</i>	<ul style="list-style-type: none"><li>• <u>Asynchronous Online Modules (November 2022)</u></li><li>• <u>In-person/webinar trainings (fall/winter)</u></li></ul>
<b>School Test Security Plans Due to OSSE</b>	<ul style="list-style-type: none"><li>• 15 business days prior to the first day of the school's testing start date</li></ul>
<b>Incident Reporting and Monitoring</b>	<ul style="list-style-type: none"><li>• Ongoing throughout the assessment window</li></ul>
<b>Affidavit Submission Due to OSSE</b>	<ul style="list-style-type: none"><li>• Within 15 business days after the last day of test administration of each assessment</li></ul>

# Test Security Training Reminders

- All LEA Test Integrity Coordinators are required to complete the asynchronous test security training modules and pass the quiz with a score of at least 80 percent.
- LEAs may select up to **three** LEA Test Integrity Coordinators based on assessment programs:
  - ACCESS for ELLs
  - MSAA/ DLM
  - PARCC/ DC Science
- ACCESS for ELLs Coordinators are strongly encouraged to complete training early.

# Test Security Training Reminders

- The LEA Assessment Manager and LEA Test Integrity Coordinators for all assessment programs must complete OSSE Test Security Training each year.
  - Individuals who are new to the role must attend a live test security training session, either in-person or via webinar.
  - The live OSSE Test Security Training is offered multiple times in the fall/winter; attendance is only required at one session.
- Individuals who have served in the LEA Assessment Manager or LEA Test Coordinator role in prior years may attend a live training session or may complete the asynchronous online test security training modules and quiz available on the [OSSE test security webpage](#).



# Test Security Training Reminders

- A score of 80 percent or higher on the quiz will serve as the official attendance and completion of 2022-23 Test Security Training.
- This training must be completed prior to developing your School Test Security Plans.
- Failing to complete this training will result in ineligibility to serve in the role of LEA Assessment Manager or LEA Test Coordinator, and/or Nonpublic School Test Coordinator.

# Required Nonpublic School Test Coordinator Test Security Training

- Individuals serving as Nonpublic School Test Coordinators are also required to complete OSSE Test Security Training each year.
- Individuals who are new to the role must attend a live test security training session, either in-person or via webinar.
- A separate test security training webinar specifically for Nonpublic School Test Coordinators will be held in addition to the LEA-focused sessions.
- The information provided will prepare Nonpublic School Test Coordinators to complete and submit required documentation, train their staff and administer ACCESS, MSAA, DLM, PARCC and DC Science.
- Nonpublic School Test Coordinators are encouraged to attend the nonpublic-focused training, but may also attend the LEA-focused training.

# Test Security Trainings Sessions

Date	Time	Type	Who	Purpose	Comments
November	Asynchronous	Self-paced Modules	Experienced LEA Test Coordinators	Test Security and STSP: ACCESS	Experienced LEA Test Coordinators may complete the asynchronous online test security training modules and quiz.
December 13	1:00pm to 3:00pm	Hybrid (In-person and webinar)	<ul style="list-style-type: none"> <li>LEA Test Coordinators</li> <li>Non-Publics Test Coordinators</li> </ul>	<ul style="list-style-type: none"> <li>Test Security</li> <li>STSP: ACCESS</li> </ul>	If you are administering ACCESS, we strongly advise that you attend this session to ensure that you are prepared to submit your ACCESS for ELLS plan.
January 17	1:00pm to 3:00pm	Webinar [registration required]	<ul style="list-style-type: none"> <li>LEA Test Coordinators</li> <li>Non-Publics Test Coordinators</li> </ul>	Test Security STSP: Non-ACCESS participants	This session will be repeated at the February 3 session.
January 26	1:00pm to 3:00pm	Webinar [registration required]	Non-Public School Test Coordinator	Overall test administration incl. OST, etc.	This session will prepare Nonpublic School Test Coordinators to complete and submit required documentation, train their staff, and administer ACCESS, MSAA, DLM, PARCC and DC Science.
February 3	10:00am to 12:00pm	Webinar [registration required]	LEA Test Coordinators and Non-Publics	Test Security and STSP: Non-ACCESS participants	This session is a repeat of the January 17 session.



# Test Integrity and Test Security Documents

*Assessment Policy*

# Test Security Guidelines Updates for 2022-23

- Overall, policies in the Test Security Guidelines for the 2022-23 school year are consistent with policies from the 2021-2022 school year.
- **Updates include:**
  - Teacher of Record
  - Formatting updates

# Key Test Security and Integrity Documents

## Laws, Regulations and Compliance Documents:

- Testing Integrity Act of 2013
- Testing Integrity Act Amendments in 2015
- Test Integrity Regulations
- Test Security Guidelines (updated annually)
- Assessment Test Coordinator and Administration Manuals
- Additional Test Security Forms, Instructional Guides, Supplemental Materials (etc.)

All updated documents will be posted to the OSSE website as they become available.

# Test Security and Integrity Document Updates

- **Test Security and Integrity Documents updated for the 2022-23 School Year:**
  - 2022-23 Test Security Guidelines
  - 2022-23 Test Integrity and Test Security Notification Statement
  - 2022-23 Test Integrity Affidavit
  - 2022-23 Test Security Training Attendance Template
  - 2022-23 Medical Exemption Form
  - 2022-23 Unique Accommodation Request Form
  - 2022-23 Emergency Accommodations Request Form
  - 2022-23 Plan to Improve School Policies and Procedures
  - 2022-23 Test Security During testing Fact-Finding Inquiry

All updated documents will be posted to the OSSE website as they become available.

# School Test Security Plans (STSP)

- School Test Security Plans draft plans are due to OSSE **15 business days** before the school's first planned day of testing.
- These plans are completed and submitted through the Quickbase application.
- Access to Quickbase is given to the LEA Assessment Manager.
- The initial plan that is submitted is a draft plan.
  - The draft plan informs OSSE of the school's expected testing start and end date for each assessment, which allows the Quickbase application to automatically calculate the due date for the final plan.
  - The school will use the draft plan to develop and submit the final plan to be reviewed by OSSE.



# School Test Security Plans (STSP)

- Plans should be completed by assessment program.
  - Schools will have, at a minimum, one plan for ACCESS/ Alternate ACCESS, one plan for MSAA/DLM and one plan for PARCC/DC Science, as applicable to the assessments administered at the school.
- A school may decide to submit a separate plan for each assessment or combine plans (e.g. MSAA/DLM or PARCC/DC Science) by program.
  - If a school chooses to include two assessments within a plan, the plan must address security protocols and logistics for both assessments.
- Draft plans for ACCESS for ELLs are due no later than **January 17, 2023**.
- Draft plans for all other assessments are due no later than **February 15, 2023**.

**Reminder: No testing can take place until the school test security plan has been marked OSSE Approved in the Quickbase application.**



# Testing Accommodations Policy 2022-23

---

*Assessment Policy*

# Testing Accommodations Policy 2022-23

- The 2022-23 Testing Accommodation Guides (TAGs) will be available in October, including:
  - **Testing Accommodations Guide for Students with Disabilities (SWDs)**
  - **Testing Accommodations Guide for English Learners (ELs)**
  - **Accessibility Features and Administrative Considerations Guide for All Students**
- These guides provide an overview of the accommodations, accessibility features and administrative considerations available to students participating in this spring's statewide assessments and a crosswalk for aligning Special Education Data System (SEDS) accommodations to accommodations available on statewide assessments
- All Testing Accommodations Guides will be posted on the [OSSE website](#) when available

## 2022-23 PARCC/DC Science Accommodations Trainings

Training	Date/Time	Location
PARCC & DC Science Assessment Accommodations Webinar	Tuesday, Jan. 24, 2023 1-3 p.m.	In-Person
	Tuesday, Jan. 31, 2023 10 a.m.-12 p.m.	Webinar



# Alternate Assessment Eligibility Process

---

*Test Administration*

# Alternate Assessment Eligibility Timeline

Activity	Date	System
Deadline for LEAs to upload Alternate Eligibility forms in SEDS * The Alt Eligibility Participation Decision Form is an annual submission	Oct. 14, 2022	SEDS
OSSE reviews documentation in SEDS	Oct. 17 – Nov. 18, 2022	SEDS
OSSE sends final eligibility determinations to LEAs in SEDS	Nov. 21, 2022	SEDS Qlik
LEA appeals window	Nov. 22 – Dec. 16, 2022	Quickbase SEDS
LEAs receive appealed eligibility determinations from OSSE	Jan. 9, 2023	SEDS



# Next Generation Assessment Meetings and Communications

---

## NGA Meeting Dates 2022-23

Thursday, Dec. 6, 1-3 p.m.

Thursday, Feb. 7, 1-3 p.m.

Thursday, June 6, 1-3 p.m.

## NGA Meeting Schedule

---

- You can register for NGA Meetings through the Eventbrite links in the NGA Bulletin.
- Meeting agendas will be sent to stakeholders one week prior to meetings via the NGA Bulletin.
- All meetings will be hybrid.



# Overview of 2022-23 NGA Meeting Topics

- **December:** Training Schedule, Assessment Registration, Technology Setup
- **February:** Test Administration/Security, Testing Materials
- **June:** Test Administration/Security Reminders, PARCC/DC Science and MSAA/DLM Closeout, Reporting Timeline, 2023-24 Draft Assessment Schedule, 2023-24 Assessment Policy Proposals
- **August:** Results Reporting, ISR Delivery, Updates for 2023-24, English Learner Screeners, Alternate Assessment Eligibility

# Technical Assistance Bookings with OSSE

- Individuals assigned as LEA Assessment Managers, LEA Test Coordinators, and/or Nonpublic School Test Coordinators can [sign up](#) to meet with OSSE staff about any technical questions.
- Be sure to include the topic you would like to discuss and any specific questions you have in your registration.



# Register for the NGA Bulletin

To become part of our email list, you can register in eSchoolPLUS as an **LEA Assessment Manager, MSAA Coordinator, ACCESS for ELLs Coordinator** and/or **Assessment POC**.

- Users registered to these roles receive the NGA bulletin each week.
- If you have not used or do not have access to the eSchoolPLUS system, the data manager at your school should be familiar with the system and able to support with registration.
- Occasionally, additional assessment related information and updates are sent to LEA staff assigned to these roles.
- \*Note that Nonpublic School Test Coordinators can register and/or be removed from this mailing list by emailing [OSSE.Assessment@dc.gov](mailto:OSSE.Assessment@dc.gov).

# LEA Assessment Manager and Nonpublic Test Coordinator Contact Form

**Stay informed and stay up-to-date.**

Complete the [Test Coordinator Contact form](#) to identify the LEA Assessment Manager, Nonpublic Test Coordinator and any LEA Test Coordinator individuals.

## 2022-23 LEA and Nonpublic School Test Coordinator Contact Information

Please use this form to submit the name and contact information for each Local Education Agency (LEA) Assessment Manager, LEA Assessment Coordinators, and/or Nonpublic School Test Coordinator. The LEA Assessment Manager is responsible for overseeing the coordination of all statewide assessments taken by students in their LEA and ensuring compliance with OSSE policies and protocols. LEA Assessment Managers can designate assessment-specific LEA Assessment Coordinators to fulfill the responsibilities outlined in this document. LEA Assessment Managers may designate the same person as LEA Assessment Coordinator for all three programs or may designate different parties (e.g., PARCC/DC Science Coordinator; MSAA/DLM Coordinator; and ACCESS Coordinator).

The same staff member can be listed for multiple roles. This information can be updated at any time, but original submissions should be complete by 5 p.m. on October 14, 2022.

### LEA Manager and Nonpublic School Coordinator Contact Information

Please provide the contact information for the LEA Assessment Manager or the Nonpublic Test Coordinator.

This form is being completed by a..... \*

- ☐ LEA  
☐ Nonpublic School

LEA or Nonpublic School Name \*

LEA or Nonpublic School Address \*

Manager's or Coordinator's First and Last Name \*

Manager's or Coordinator's professional email \*



Questions?

# Office of Assessments - Contact & Resources

- OSSE Office of Assessments Website: [OSSE.dc.gov/assessments](https://osse.dc.gov/assessments)
- OSSE Office of Assessments Email: [OSSE.Assessment@dc.gov](mailto:OSSE.Assessment@dc.gov)
- Test Coordinator Resources Website: [osse.dc.gov/page/test-coordinator-resources](https://osse.dc.gov/page/test-coordinator-resources)
- Test Security Resources Website: [osse.dc.gov/service/test-security-and-incident-forms](https://osse.dc.gov/service/test-security-and-incident-forms)
- WIDAACCESS: [wida.wisc.edu/assess/access](https://wida.wisc.edu/assess/access)
- NAEP: [nces.ed.gov/nationsreportcard](https://nces.ed.gov/nationsreportcard)
- MSAA: [msaaassessment.org](https://msaaassessment.org)
- DLM: [dynamiclearningmaps.org](https://dynamiclearningmaps.org)
- PARCC & DC Science: [dc.mypearsonsupport.com](https://dc.mypearsonsupport.com)