

Community Schools: 101

What are they? And how do I get started?

Bernice B. Massiwer

October 17, 2018



Presentation Objectives

- Define what is a community school
- Describe the community schools strategy
- Share information about the Community Schools Collaborative Leadership Structure
- Help attendees identify action steps to move their community schools work forward

Community Schools Video



[Watch the Video](#)

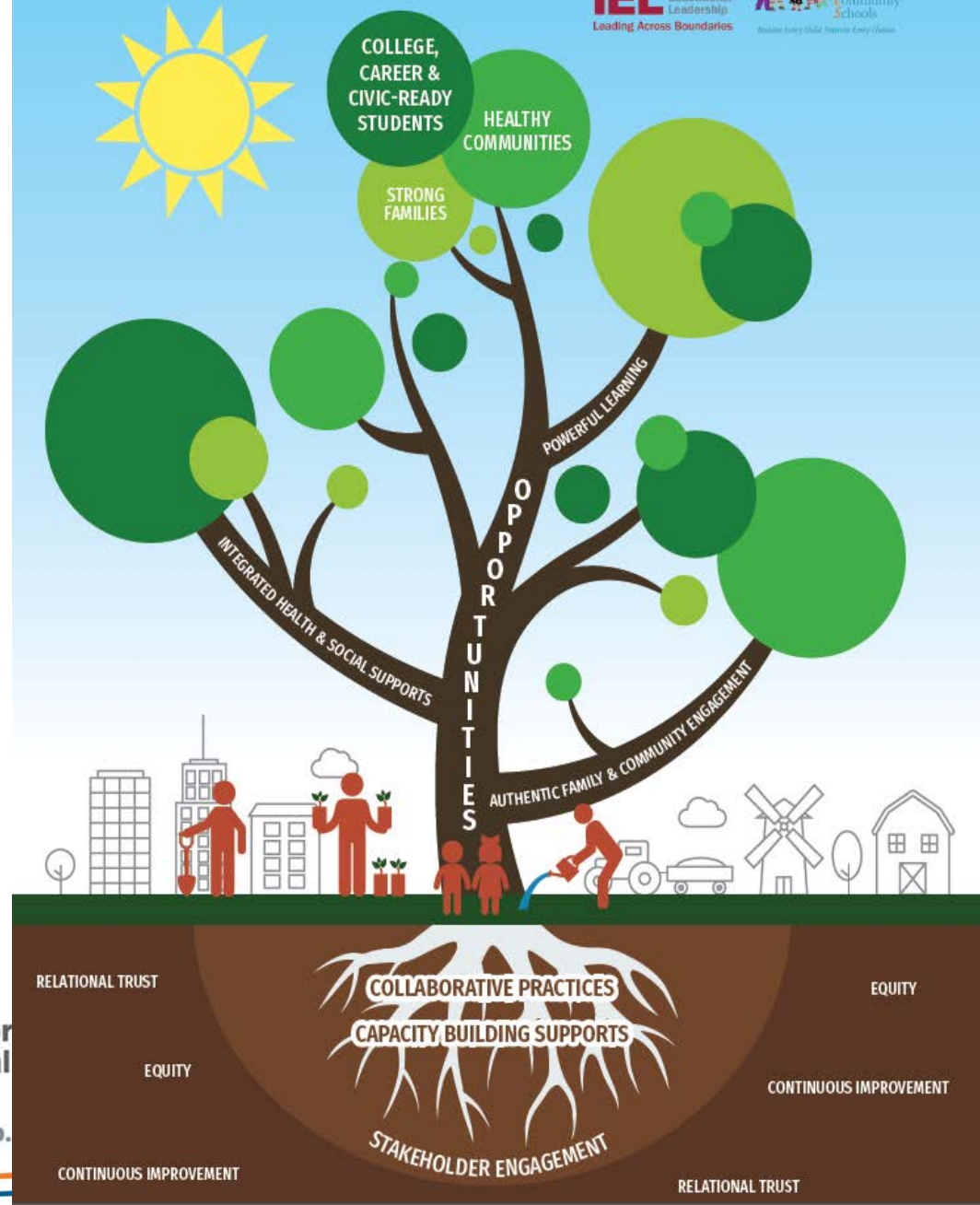
What is a Community School

- A community school ***is a place and a set of partnerships*** connecting school, family, and community. A community school is distinguished by its integrated focus on academics, youth development, family support, health and social services, and community development.
- They require strategic partnerships among schools, partner agencies, families, and community members. A community schools strategy leverages, coordinates, and maximizes resources and includes a coordinator to manage day-to-day activities at each school site.

Fully Developed Community School Framework



COMMUNITY SCHOOLS FRAMEWORK



Community Schools Framework



**Integrated
Health & Social
Supports**



**Powerful
Learning**



**Authentic
Family &
Community
Engagement**

Results-focused Partnerships



Integrated
Health and
Social Supports

- **Mental Health**
- **Housing assistance**
- **Peer conflict resolution**
- **Family stability programs**
- **Positive discipline practices (e.g. restorative practices)**
- **Health, dental and vision services**

Results-focused Partnerships

- Challenging and culturally relevant curricula
- High quality services provided to ELL and special education students



Powerful Learning

- Community based learning
- Real world learning through career and technical education and apprenticeships

Results-focused Partnerships

- Parent teacher home visits
- School-based family resource centers
- School staff, families, and partners participate in community asset mapping
- Career preparation experiences
- Parent leadership



Authentic
Family and
Community
Engagement

Results-focused Partnerships

COMMUNITY SCHOOLS IN BALTIMORE

A Community School is a place and a set of strategic partnerships among a school and other community resources that promote student achievement, positive conditions for learning and the well-being of families and communities. Through the work of a community-based partner, each Community School leverages unique community resources to meet community needs, and maintains a core focus on children, while recognizing that children grow up in families, and that families are integral parts of communities. This integrated approach will lead to student success, strong families and healthy communities.



OAKLAND COMMUNITY SCHOOLS

WHERE ALL STUDENTS GRADUATE COLLEGE, CAREER, AND COMMUNITY READY



OAKLAND UNIFIED
SCHOOL DISTRICT
Community Schools. Thriving Students.



OAKLAND
HUMAN SERVICES
DEPARTMENT



OAKLAND COMMUNITY SCHOOLS
& STUDENT SERVICES



United Way Community Schools

Strengthening our children's future. TOGETHER.

Higher academic proficiencies
Improved positive behavior
Higher attendance rates
Better supported families
and neighborhoods!

QUALIFIED
TEACHERS,
STAFF AND
ADMINISTRATION

PRE-K TO K
TRANSITION
AND SCHOOL
READINESS

MENTORING
AND TUTORING
PROGRAMS

SAFE ROUTES
TO AND FROM
SCHOOL

FAMILY
LITERACY
PROGRAMS

ON-SITE VISION,
MEDICAL
AND DENTAL
SERVICES

ARTS AND MUSIC
ENRICHMENT
PROGRAMS

SUFFICIENT
SCHOOL
RESOURCES
AND SUPPLIES

GANG
AWARENESS AND
PREVENTION



FOOD BANK,
CLOTHING
CLOSET AND
BASIC NEEDS
PARTNERSHIPS

BEHAVIORAL
HEALTH
AND SOCIAL
SUPPORTS

BASIC NEEDS
FAMILIES AS PARTNERS
ENGAGING INSTRUCTION
SAFE SCHOOLS/NEIGHBORHOODS
POSITIVE YOUTH DEVELOPMENT PROGRAMMING
QUALITY EARLY CHILDHOOD EDUCATION STRATEGIES

BUSINESS LEADERS
COMMUNITY LEADERS
HIGHER EDUCATION LEADERS

PARENT LEADERS
POLITICAL LEADERS
SCHOOL LEADERS

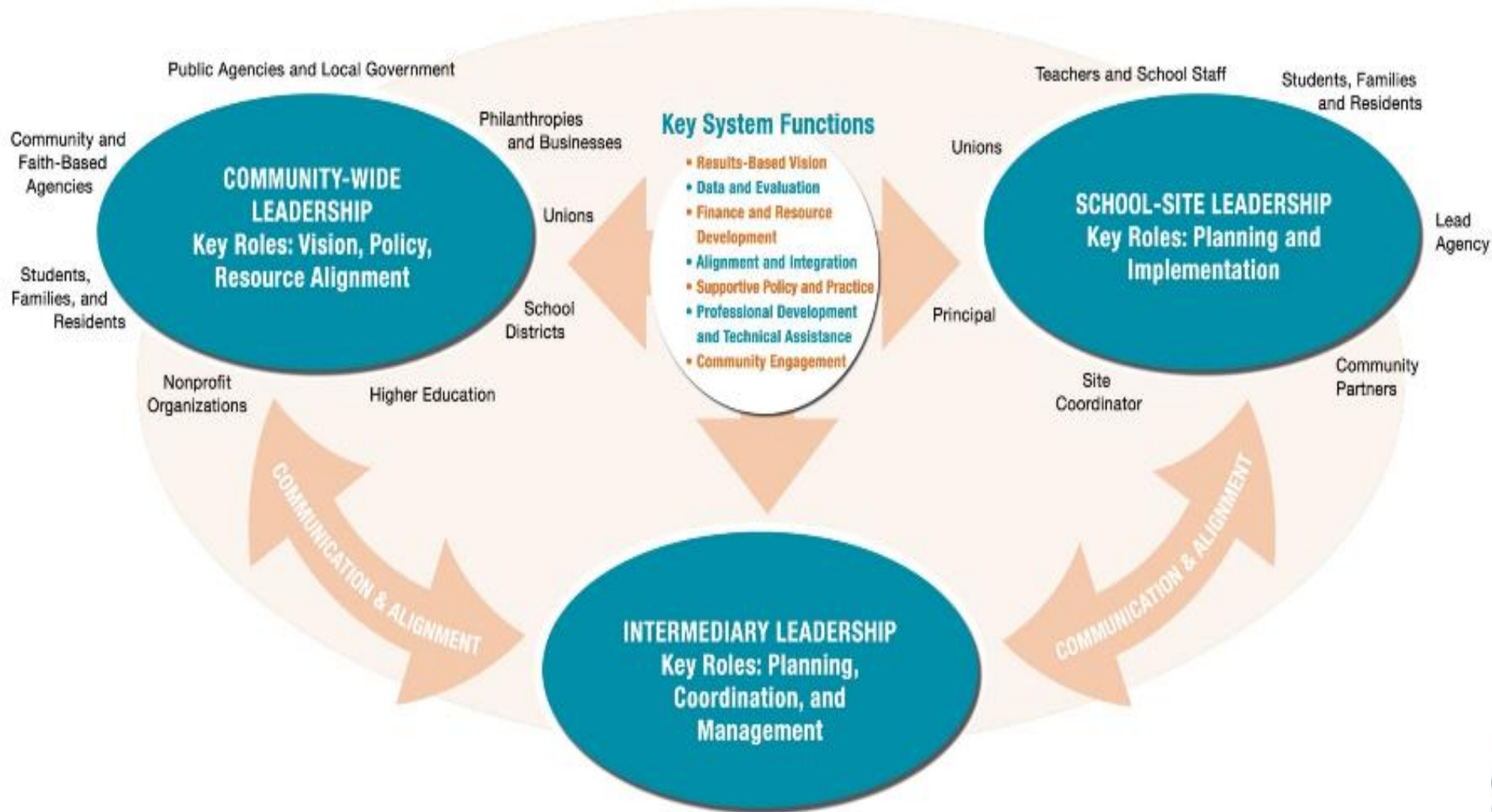


Small Group: Exploring the community school vision



- What stands out to you?
- What questions do you have?

A Collaborative Leadership Structure for Community Schools



Looking Inside: School Level



School Site Benchmarks

Collaborative Leadership

- ☐ Relationships with lead agencies and local partners based on shared vision are established.
- ☐ Site teams representing school and partner staff, families and community members lead school site team.
- ☐ Skilled, full-time coordinators are in place.

Results-based Vision

- ☐ Planning and implementation at every school site are aligned with the community-wide vision.
- ☐ At every site, a results and indicators framework based on the community-wide framework organizes the work.
- ☐ Priority is given to specific results based on site needs and indicators are used to track progress.

School Site Benchmarks

Data and Evaluation

- ☐ Site teams make decisions about which data are most relevant and useful to collect based on result and indicator frameworks.
- ☐ Relevant data on participation, implementation and results is analyzed and used to make continuous improvement in practice and recommendations for policy change.

Alignment and Integration

- ☐ School partners, within and across linked sites, participate in developing the school improvement plan which reflects the site's results framework.
- ☐ The school and its partners integrate academic and non-academic supports, services and opportunities to attain agreed upon results for the initiative.
- ☐ Instructional content and methods, during and after school hours, reflect community school principles and selected indicators.

School Site Benchmarks

Supportive Policy

- ☐ A clear and coherent set of practices and policies with respect to site level implementation guides both school staff and community partners and fosters integration between in-school and after school activities.
- ☐ Personnel policies of school sites, lead agencies and partner agencies are aligned and reviewed regularly to foster positive working relationships across shared staffs.

Financing and Development

- ☐ Site level partners play a significant role in identifying and leveraging local revenue sources including in kind contributions from partner agencies.
- ☐ Grant money is sought and used strategically to leverage additional resources.
- ☐ Resources are earmarked to finance a community school coordinator position at each site.

School Site Benchmarks

PD and Technical Assistance

- ☐ School staff and site level partners participate in joint PD and planning time designed to deepen the integration between in-school and after-school teaching and learning.
- ☐ Community school coordinators receive pre- service training from the initiative and site level partners participate in relevant school- run PD activities.

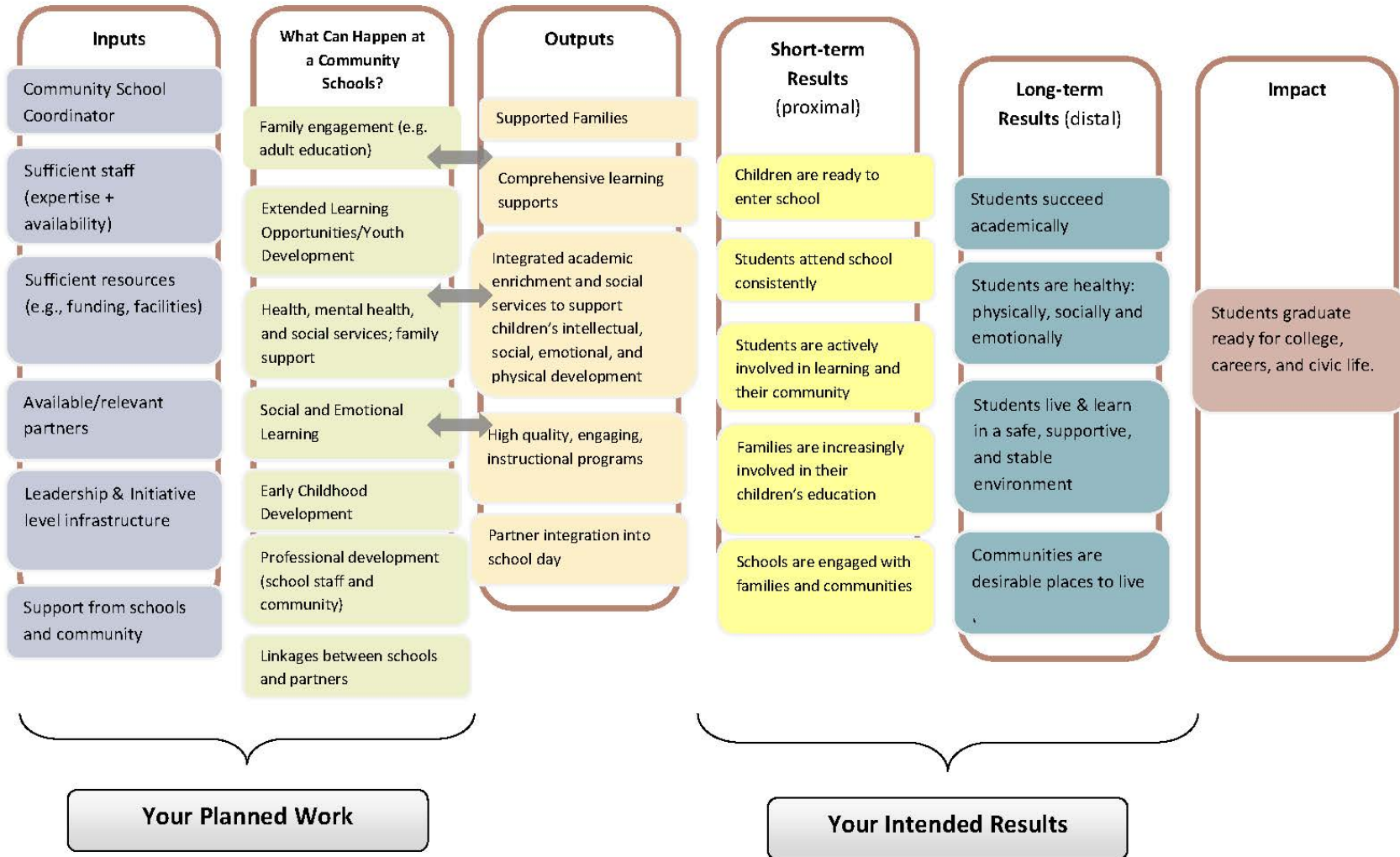
Community Engagement

- ☐ The community school promotes itself as the hub of the neighborhood and utilizes the name and logo of the initiative in building its own identity.
- ☐ Leadership development opportunities for parent/family members and residents enable them to carry out their leadership tasks.
- ☐ Parents and residents represent the concerns of community schools and their neighborhoods in decision-making forums at all levels (e.g., neighborhood associations, housing commissions, city council, and the school board).

Getting Started

- **Convene Innovators**
 - Families, school leaders, community partners, educators
- **Vision and Strategic Plan**
 - Results Based Logic Model (next slide)
 - Data Sharing Agreements
- **Needs/Asset Assessment**
- **Financing**
 - Making the Case
 - Identifying Funding Streams
- **Sustainability – not just about finance**

Community Schools: A Results-Based Logic Model



Pair and Share: Are you **READY** to **START**?



- What pieces do you already have in place?
- Who do you need to involve for further planning?

Action Planning Activity



OSSE Community of Practice: Community Schools 101 October 17, 2018

Action Plan Goal/Result:

List three action steps that you would like to accomplish when you return to your school or organization to deepen the implementation of your community schools work using what you have learned. Identify an action, who needs to play a role, and what further support or resources you need.

Prioritized Action	Who Needs to Play a Role	What Further Support Do You Need



Institute for
Educational
Leadership
Innovation. Equity. Leadership.

About the Coalition for Community Schools

- Established in 1997
- House at the Institute for Educational Leadership
- Alliance of over 200 national, state and local organizations
- Our partners span the sectors of education K-16, youth development, community planning and development, family support, health and human services, government and philanthropy as well as national, state and local community school networks



Coalition Vision and Mission

- **Shared Vision**: Schools are centers of flourishing communities where everyone belongs, works together, and thrives.
- **Mission**: To unite school, community and family for young people's success.

Thank you

Bernice B. Massiwer
Partnerships Manager
Coalition for Community Schools
massiwerb@iel.or
202-822-8405 ext. 156
@bbutler180

www.communityschools.org

