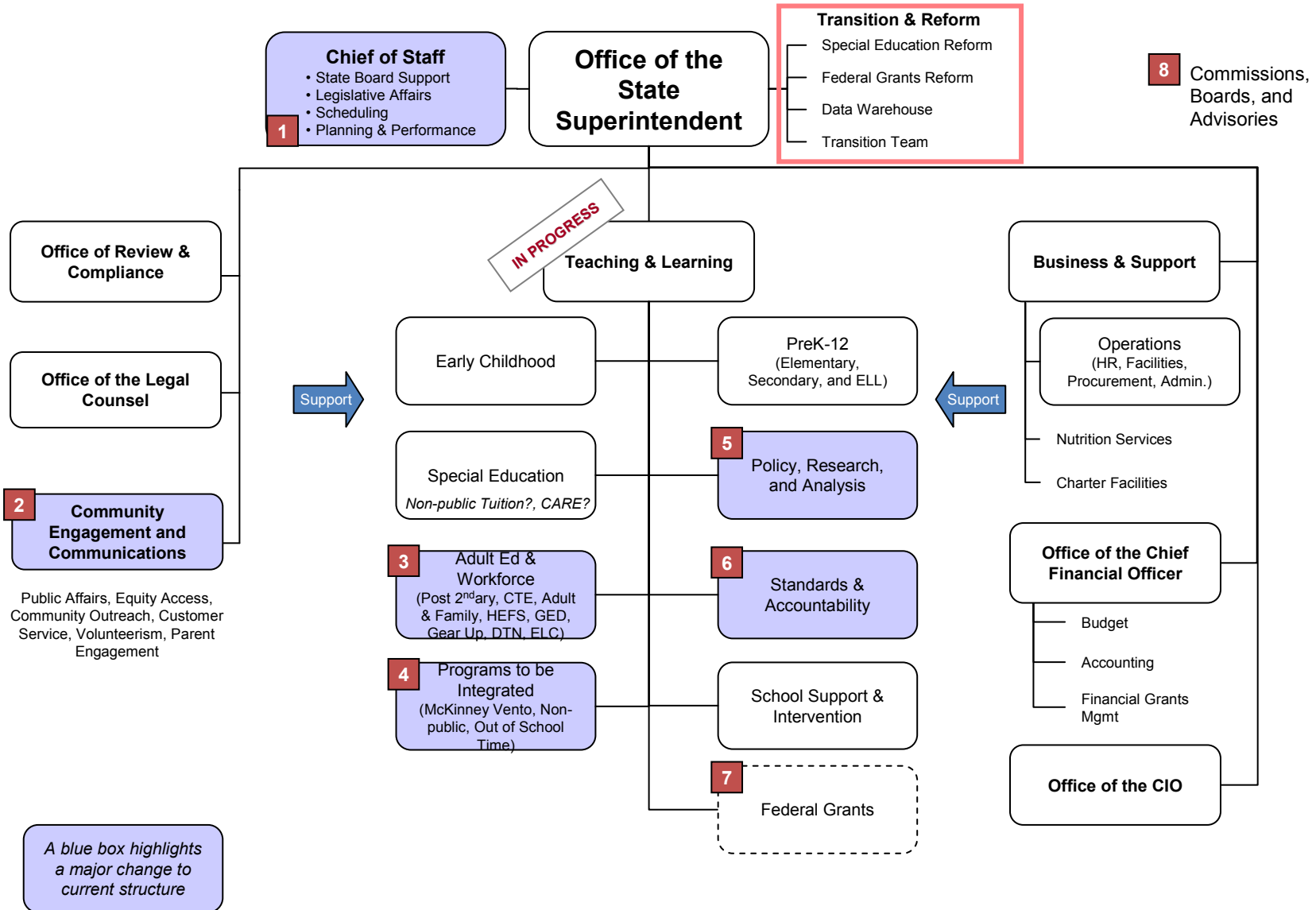
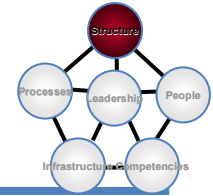


Proposed OSSE Organization Design





Proposed OSSE Organization Design

FUNCTION / ACTIVITY	PROPOSED CHANGES	RATIONALE	ORGANIZATION IMPLICATIONS
1 Planning and Performance	<ul style="list-style-type: none"> Shift to Chief of Staff's management 	<ul style="list-style-type: none"> Place process for driving planning and performance at Superintendent level to ensure strategic perspective and organizational accountability 	<ul style="list-style-type: none"> Shifts planning and performance function from PPPE
2 Community Engagement and Communications	<ul style="list-style-type: none"> Establish a direct report to Superintendent Shift Volunteerism Separate Parent Engagement from Student Services 	<ul style="list-style-type: none"> Establish strategic link of communications to the Superintendent Maintain connection of agency-level outreach issues to external communications 	<ul style="list-style-type: none"> Moves communication function along with volunteerism and parent engagement programs from PPPE
3 Adult Education and Workforce	<ul style="list-style-type: none"> Connect HEFS and ELC to Adult Education and Workforce 	<ul style="list-style-type: none"> Combine higher education services with instructional component to ensure strategic perspective and closely coordinated requirements 	<ul style="list-style-type: none"> Moves HEFS from Business & Support Moves ELC from PPPE
4 Programs to be Integrated	<ul style="list-style-type: none"> Separate from Student Services and Parent Engagement Move Student Services to T&L 	<ul style="list-style-type: none"> Connect student services (McKinney Vento, Out of School Time, non-Public) with other student-related components 	<ul style="list-style-type: none"> Separates student services responsibilities from current PPPE "Student Services & Parent Engagement" unit and reassign to T&L
5 Policy, Research, and Analysis	<ul style="list-style-type: none"> Integrate with T&L 	<ul style="list-style-type: none"> Ensure that policy development and enrollment count function are tied to T&L Provide T&L with capability to leverage data for decision-making 	<ul style="list-style-type: none"> Separates PRA from PPPE
6 Standards & Accountability	<ul style="list-style-type: none"> Integrate with T&L 	<ul style="list-style-type: none"> Ensure standards development, accountability, and teacher quality are connected to education programs 	<ul style="list-style-type: none"> Shifts all units within Standards and Accountability to T&L
7 Federal Grants	<ul style="list-style-type: none"> Integrate with other K-12 programs within T&L 	<ul style="list-style-type: none"> Establish link between grants management and programs to ensure information sharing and effective support to LEAs 	<ul style="list-style-type: none"> Merges OFGP capabilities into appropriate education programs
8 Commissions, Boards, & Advisories	<ul style="list-style-type: none"> Eliminate this unit and shift responsibilities to programs 	<ul style="list-style-type: none"> Ensure boards and commissions are tied to programs 	<ul style="list-style-type: none"> Dissolves a standalone unit and distributes responsibilities to specific programs