

# DC School Report Card At A Glance

The DC School Report Card gives families a look into all public schools in the District. This tool is a step toward a more transparent, equitable DC education system, with students at the center of critical decision-making.

## School Environment

Provides information about the school's attendance, re-enrollment, safety and discipline, teaching and health staff, and Early Childhood Learning environment.

## STAR Rating

Every school's performance is measured and rated by the annual STAR (School Transparency and Reporting) Framework. Schools receive a rating from one to five stars, five being the highest.

## Message from the School

Each school will write a message for users that helps highlight unique aspects of the school, how it approaches its work to serve students.

## Compare

Compare the schools you are interested in based on school performance, program offerings, location, and more.

## Parent Organization Information

Easily accessible information about the school's parent organization.

## Student Population

Shares the school's overall enrollment, percentage of students from each racial/ethnic group as well as six other student groups, including: students with disabilities, English learners, and students who are at risk.

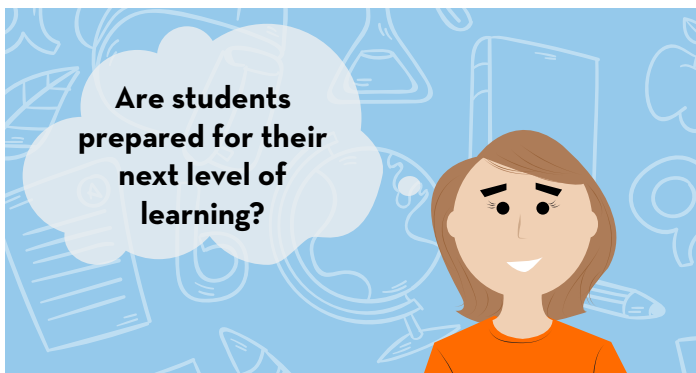
The screenshot shows the 'DC Example School' report card page. It features a navigation bar with 'PROFILE', 'STAR RATING', 'ACADEMIC PERFORMANCE', and 'SCHOOL ENVIRONMENT'. The 'SCHOOL ENVIRONMENT' tab is active. The page is divided into several sections: 'BASIC INFO.' (Grades Served: Pre-K-Grade 12, Title I Status: Yes, STAR Rating: 4 stars), 'PARENT CONTACTS' (Parent Representative, Parent Name, Parent Email, Parent Organization, Parent Communication Policy), 'A NOTE FROM THE SCHOOL ABOUT WHAT MAKES IT UNIQUE' (A paragraph about the school's mission), and 'STUDENT POPULATION' (Total Student Enrollment: 1,000, Enrollment by Race/Ethnicity pie chart showing 0% for all groups).

## What is the DC School Report Card?

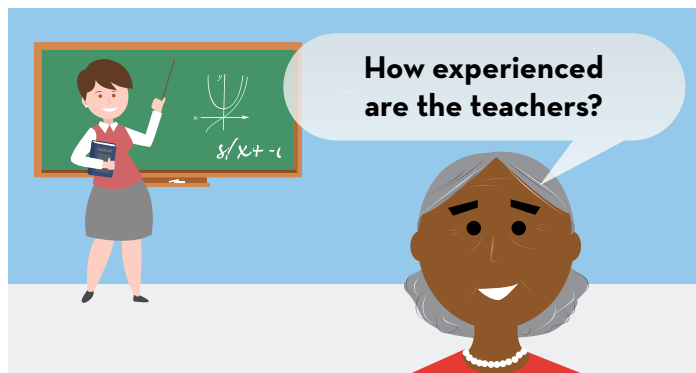
The DC School Report Card helps parents understand how a school is doing with its all of its students, in addition to helpful information about the school itself, including the closest public transportation routes, academic programs and extra-curricular options, the best contact person for parents and families, and more. The DC School Report Card will help you answer some of the most crucial questions about your child's current school, and is a first step for parents and families thinking about their child's next educational step.

## How to Use the DC School Report Card

Parents want and need easy access to the high-quality information that helps them make the right educational decisions for their students. With a wide range of inputs, from teacher experience to after-school programs and activities, the DC School Report Card will be the best first step for parents making educational decisions for students all over the District. What's more, families can do it quickly and easily at a website that compiles this information together. The DC School Report Card will prepare you with information to help advocate for your school, ask questions about school performance, or to help your family choose the next step in your child's education. Below are some of the questions you may have about your child's school that the DC School Report Card can help answer.



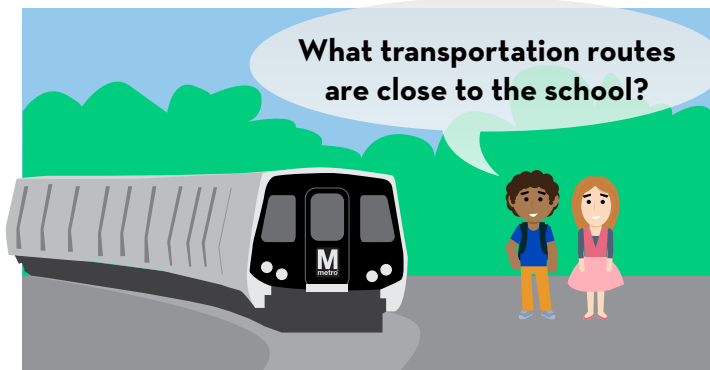
The DC School Report Card provides details about multiple areas of academic performance, including details of the school's STAR Rating.



The DC School Report Card provides information about teacher experience and health staff availability.



The DC School Report Card provides a list of a school's programs as well as a search tool to find schools with the programs you want.



The DC School Report Card provides transportation information and a mapping tool to search for schools close to a specific address.

## Where Do I Find Out More?

The DC School Report Card launches in December 2018. Want to know more before December?

- Visit [osse.dc.gov/dcschoolreportcard](https://osse.dc.gov/dcschoolreportcard) to view more information about the report card and learn the feedback OSSE heard from parents and families.
- Email [osse.builddcreportcard@dc.gov](mailto:osse.builddcreportcard@dc.gov) to sign up for report card updates.
- Follow OSSE on Twitter [@OSSEDC](https://twitter.com/OSSEDC) or find us on Facebook at [facebook.com/ossedc](https://facebook.com/ossedc)