



District of Columbia  
Office of the State Superintendent of Education

Early Learning Course Catalog  
**SUMMER 2017**  
OSSE Division of Early Learning



[osse.dc.gov](http://osse.dc.gov)



[facebook.com/ossedc](https://facebook.com/ossedc)



[@OSSDC](https://twitter.com/OSSDC)



202.727.6436





## **OSSE Mission**

To remove barriers and create pathways for District residents to receive a great education and prepare them for success in college, careers, and life.

## **Introduction to the Summer 2017 Course Catalog**

Thank you for your interest in professional development courses offered by the Office of the State Superintendent of Education, its partners and contractors, as well as the community of OSSE-Certified trainers. We look forward to providing responsive training opportunities that support your work creating high-quality learning experiences for children of all ages.

OSSE-sponsored offerings are data driven and/or research based. Trainings are selected and prioritized based on a variety of data sources including, but not limited to: community requests and workgroups; analysis of program assessment data; student achievement data from federal, state, and District sources; Education Service Monitor program reports; licensing inspection reports; the DC Common Core Early Learning Standards; and DC Municipal Regulations 29 Chapter 3.

The Early Learning Course Catalog was developed to provide the early childhood education (ECE) and Out-of-School Time (OST) workforce with multiple opportunities for professional growth and development; opportunities for meeting the yearly continuing education requirements; and opportunities to participate in a District-wide professional learning community.

## CATALOG FORMAT

Early Learning Catalog Distribution Cycle for FY 2017	<p>The Early Learning Course Catalog will be distributed on the following schedule:</p> <ul style="list-style-type: none"> <li>• Fall (October, November, December)</li> <li>• Winter (January, February, March)</li> <li>• Spring (April, May, June)</li> <li>• Summer (July, August, September)</li> </ul>
Quarterly Listings	The listings will span a full quarter allowing participants to plan trainings “ahead of time” and allow providers to develop a strategy for incorporating OSSE sponsored trainings into their greater staff development plans.
Table of Contents	The Table of Contents will help readers navigate the content of the course catalog.
Announcement Pages	The Announcement Pages will enable readers to stay abreast of OSSE initiatives and local offerings.
OSSE sponsored trainings	OSSE-sponsored training, provided through a network of local and national partners and contractors are offered at no cost to participants.
Professional Learning Units	The term Professional Learning Units (PLUs) is used in conjunction with “clock hours” to provide greater alignment with the professional development requirements for educators at DC Public Schools, public charter schools, and community-based organizations.
Core Knowledge Areas (CKA):	Core Knowledge Areas detail the specific knowledge and skills needed by early childhood professionals to work effectively with all young children and families. ECE and OST educators can increase their ability to provide quality learning experiences for young children by taking courses in all 11 areas. CKAs include: Child Growth and Development; Observing, Documenting and Assessing to Support Young Children and Families; Health, Safety, and Nutrition; Curriculum; Inclusive Practices; Learning Environments; Building Family and Community Relationships; Diversity: Family, Language, Culture, and Society; Program Management: Operation and Evaluation; Professionalism and Advocacy; and, Social-Emotional Development and Mental Health.
Course Listings	Course listings are communicated through an easy to understand visual display. OSSE-sponsored listings also include a live hyperlink to the registration page for easy enrollment in courses. <i>See below.</i>

## COURSE LISTING EXAMPLE:

**DATE OF OFFERING** → Jan. 18

**TITLE OF OFFERING** → SEASONS IN THE PARK!  
ROCK CREEK PARK NATURE CENTER

**NUMBER OF “CLOCK HOURS” EARNED** → 2.0 Professional Learning Units (clock hours)

**CORE KNOWLEDGE AREA COVERED** → CKA: Curriculum

**COURSE DESCRIPTION** → Join Park Ranger Maggie Zadorozny for a field experience geared toward teachers of children ages 2 to 5 years old! Discover the beauty of Rock Creek Park in any season. Hike the nearby forest and look for seasonal changes, meet some of the animals that call the District of Columbia home, and learn about the vast resources available to support.

**EVENT DETAILS** → **Date:** January 18, 2017  
**Time:** 3 - 6 p.m.  
**Location:** 5200 Glover St. NW, Washington, DC

**REGISTRATION INSTRUCTIONS** → **Register by Web:** [osse.dc.gov](http://osse.dc.gov)  
**Cost:** FREE  
**Sponsor(s):** Rock Creek Park Nature Center and OSSE  
(for OSSE-sponsored offerings ‘click’ the link for easy web registration) **Please cancel 48 hours in advance in order to provide spaces for other participants.**



## POLICIES AND PROCEDURES:

OSSE-sponsored trainings are offered at no cost to participants. In order to continue providing these dynamic resources for free, we ask that each participant who registers for an OSSE-sponsored training adhere to the following conditions:

- Plan to arrive at least 5-10 minutes before the training is scheduled to begin.
- If you are unable to attend training you've registered for, please e-mail [osse.dcchildcareconnections@dc.gov](mailto:osse.dcchildcareconnections@dc.gov) at least 48 hours in advance so that your ticket can be used for another participant (no phone calls).
- If arriving late, please note that trainers reserve the right to deny entrance after a 10-minute grace period.
- If arriving late, any certificate issued will reflect your actual professional learning units/clock hours earned and may be sent via e-mail based on trainer preference.
- If arriving late due to an unforeseen emergency, please call (202) 727-6436 to alert the OSSE front desk staff.

## FREQUENTLY ASKED QUESTIONS

Where are OSSE's offices?

OSSE is located at 810 First St. NE, three blocks behind Union Station. When exiting the station, turn toward the right and walk away from Massachusetts Avenue. Continue down First Street until you see the sign labeled 810. We are located in the same building as the DC Water and Sewer Authority.

What is the closest Metro Station to OSSE?

The closest Metro Station is the Union Station Metro (Red Line).

Is there parking at 810 First Street NE?

Yes. There are a number of parking garages near 810 First Street NE. The prices range from \$15 to \$25 dollars. There is also limited 2-hour on street parking. Please note: We recommend taking the Metro or car pool. It generally takes 15 minutes to find a parking spot and get to the training location. Please plan accordingly.

Do I need an ID to attend training?

Yes. In order to enter the building you will need to show an identification card to sign in with the guard. There is a 100% ID Check policy to enter the building.

What happens if I am late to an OSSE-sponsored training?

If arriving late due to an unforeseen emergency (Metro, Police, Fire, Lost, etc.) please call (202) 727-6436 to alert the OSSE front desk staff. Trainers reserve the right to deny entrance after a 10-minute grace period. Any certificate issued will reflect your actual professional learning units/clock hours earned and may be sent via e-mail based on trainer preference.

Do I need to print my Eventbrite ticket for entry?

Yes. The Eventbrite Ticket serves as proof of your registration. In the event that training is over-booked, preference is given to participants who are registered to attend.

Do I have to register to attend training?

Yes. In the event that training is over-booked, preference is given to participants who are registered to attend. Walk-in participants are not guaranteed a seat or training materials.

What should I do if I am no longer able to attend a class I registered for?

If you are unable to attend training you've registered for, please e-mail [osse.dcchildcareconnections@dc.gov](mailto:osse.dcchildcareconnections@dc.gov) at least 48 hours in advance so that your ticket can be used for another participant (no phone calls).

When we meet at a community site (Smithsonian, Rock Creek Park, etc.) and I cannot find the training group, what do I do?

During off-site trainings, there is generally an OSSE staff member and/or trainer to greet participants upon their arrival. If arriving late, locate the information booth at the community site and ask for information regarding your class. If you are still unable to find the training, call the OSSE front desk staff at (202)727-6436.

My staff needs training; however, I do not see our preferred content listed in the current catalog. What should I do?

There is an OSSE-Certified Trainer Resource Guide located at the back of each Early Learning Course Catalog. The trainers listed provide fee-for-service training and can work with you to customize trainings for your staff's professional development needs. OSSE Division of Early Learning Professional Development Unit also provides limited on-demand training opportunities. Contact [diane.mason@dc.gov](mailto:diane.mason@dc.gov) to inquire about booking OSSE Division of Early Learning Professional Development.



## District of Columbia Child Care Resource and Referral (CCR&R)

### Introduction to Kids Comprehensive Services (KCS), LLC and Child Care Resource and Referral (CCR&R)

Kids Comprehensive Services (KCS), LLC was recently awarded the Child Care Resource and Referral (CCR&R) grant through the Office of the State Superintendent of Education's (OSSE) Division of Early Learning. KCS has partnered with the Division of Early Learning in the leadership and management of a comprehensive CCR&R system. The purpose of the CCR&R system is to create an integrated and effective system of supports and services for families and child care providers in the District of Columbia. The CCR&R system will provide responsive services and evidence-based supports that promote high-quality early care and education in DC. These services and supports include, but are not limited to:

- Helping connect families with early care and education opportunities, including information on how to access educational and financial resources, understand quality child care and the importance of quality in promoting positive child development, and other referrals for supports needed by families seeking child care assistance;
- Connecting early care and education providers to professional development that adheres to the mission and priorities of the Division of Early Learning, and provide information to respond to local and federal regulatory requirements to support the early childhood workforce;
- Providing technical assistance, consultation and coaching to child development facilities on how to

provide inclusive child care settings and meet the needs of children with disabilities and special health care needs surrounding the implementation of high-quality, evidence-based early childhood practices;

- Providing and maintaining access to a resource-rich CCR&R lending library that allows families and early childhood educators to borrow quality literature and books, digital resources, and curriculum resources in person and online; and
- Creating and maintaining collaborative relationships with other agencies within the District government.

### CCR&R Supports Families

CCR&R is a free service that takes the guesswork out of locating child care by providing the following services:

- An unbiased customized list of child care providers based on families' individual child care needs;
- Trained specialists to provide guidance by phone, in person, and the internet that enables the family to make informed choices;
- Information on financial assistance strategies for child care payment options;
- Centrally located and public transportation accessible service centers that have a resource library;
- Parent workshops and early child development training; and
- Collaboration with other family support services to promote a holistic vision that includes health, literacy, and special needs.

### CCR&R Supports Child Care Providers

CCR&R supports providers to create child care settings that help children grow and learn by offering:

- Child care business owners the opportunity to be listed in the CCR&R database;
- Free professional development in diverse topics and core knowledge areas of health & safety, child growth and development, inclusion, and sound business practices;
- Information on available financial assistance strategies to support access to higher education resources and technical assistance to promote high-quality early childhood education; and
- Centrally located and public transportation accessible service centers including a resource library.

### CCR&R Service Center

CCR&R collaborates to build an integrated system of supports and services for families and early child care educators that:

- Administers an early childhood call center and walk-in resource center;
- Manages the trainer approval program and publishes the trainer resource guide;
- Produces the Early Learning Foundations Catalog; and
- Supports continuous quality improvement through diverse professional development opportunities and tiered levels of technical assistance.

### CCR&R Service Center Locations:

#### Point of Contact: Dale Brown

209 Upshur St. NW,  
Washington, DC 20011  
(202) 829-2500

Monday - Friday: 9 a.m. - 5 p.m.

#### Point of Contact: Brenda Harris

2041 Martin Luther King Jr. Ave. SE,  
Suite 236, Washington, DC 20020  
(202) 678-0027

Monday - Friday: 9 a.m. - 5 p.m.

#### CCR&R Hotline: (202) 829-2500

Monday - Friday: 9 a.m. - 5 p.m.  
Translation services provided

#### CCR&R Email address:

[osse.dcchildcareconnections@dc.gov](mailto:osse.dcchildcareconnections@dc.gov)





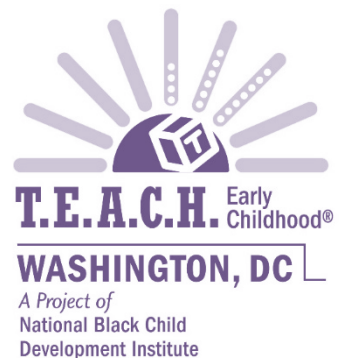
**Give Your Career  
A Boost!**

**Apply for a Scholarship Today!**

Are you planning to obtain your Associate or Bachelor degree in Early Childhood Education?

Contact a scholarship counselor today to learn how you can receive your degree debt-free!

**Call 202-833-2220 and “PRESS 4” or visit [teach.nbcdi.org](http://teach.nbcdi.org)!**







**SPACE IS LIMITED!**

**EARN 45 CLOCK  
HOURS**

# Child Development Associate Renewal Training

## Information & Registration

**Date:**

June 19 & 21, 2017

**Time:**

6:30 a.m. – 8:30 p.m.

## Class Schedule

**Dates:**

July 8, 2017 – Sept. 30, 2017

Saturdays

(2 times per month)

**Time:**

9 a.m. – 3 p.m.

## Special Class Offerings

First Aid/CPR

Child Abuse & Neglect

DC Common Core Early  
Learning Standards

Health & Safety Training

**Reminder:** Your CDA credential must be renewed every 3 years.

The CDA credential renewal process must be completed six months before it expires.

This program is in partnership with the Office of the State Superintendent of Education (OSSE)

Contact Lorraine Crews at (202) 561-1100 or [scf.pdi@gmail.com](mailto:scf.pdi@gmail.com)





## **CDA Program** (Child Development Associate)

### About us .....

*CentroNía's Child Development Associate (CDA) training program is designed to equip our candidates with the knowledge needed to prepare for the CDA credentialing process administered by the Council for Professional Recognition.*

*Our CDA training program consists of seven (7) training modules that add up to 150 hours of coursework during a 6-month period. By the end of the program, candidates will be able to meet all the application requirements needed to obtain a CDA credential.*

*We specialize in both infants/toddlers and preschool - center based specializations.*



### What we offer.....

- \* Free classes  
(150 hours of early childhood education training)
- \* Free materials  
(CDA books and other resources)
- \* Free CPR and First Aid certification
- \* Assistance with the completion of the Professional Portfolio
- \* Assistance with the application process and a
- \* Scholarship to cover 80% of the Council for Professional Recognition's application fee

### Requirements .....

- \* Complete the application form  
(find it at the front desk or our website)
- \* Bring a copy of your high school diploma or GED
- \* Be working or volunteering with children  
at a licensed center in the District of Columbia  
(a letter from your center's director will be required)



For more information about the program  
and/or questions, please contact:

Mario Platero  
mplatero@centronia.org  
202-332-4200 ext. 1142

**Our classes are FREE thanks to the support of the Office  
of the State Superintendent of Education (OSSE.)**



## Programa CDA

(Asociado en Desarrollo Infantil)

### Acerca de nosotros.....●

*El programa de capacitación para obtener el Asociado en Desarrollo Infantil (CDA) de CentroNía está diseñado para equipar a nuestros estudiantes con los conocimientos que necesitan para prepararse para el proceso de acreditación CDA administrado por el Concilio para el Reconocimiento Profesional.*

*Nuestro programa de capacitación CDA consiste de siete (7) módulos de capacitación que suman 150 horas durante un lapso de 6 meses. Al final de este programa, los candidatos CDA serán capaces de cumplir con todos los requisitos de aplicación para obtener una credencial de CDA.*

*Nos especializamos en dos tipos de CDA para centros: Infantes/Toddlers y Preescolares.*



### Lo que ofrecemos.....●

- \* Clases gratuitas (150 horas de educación infantil)
- \* Materiales gratis (libros CDA y otros recursos)
- \* Certificación CPR y Primeros Auxilios gratis
- \* Asistencia en la creación del Portafolio Profesional
- \* Asistencia en el proceso de solicitud y verificación y
- \* Una beca para cubrir el 80% de la cuota de aplicación del Concilio para el Reconocimiento Profesional



### Requerimientos .....●

- \* Completar el formulario de aplicación (Puede encontrarle en recepción o sitio web)
- \* Presentar su diploma de secundaria o GED (puede ser de su país natal)
- \* Trabajar o ser voluntario(a) con niños en un centro infantil autorizado en el Distrito de Columbia (una carta de su director(a) será requerida)

Para más información sobre el programa y/o preguntas, póngase en contacto con:

Mario Platero  
mplatero@centronia.org  
o llame al 202-332-4200 ext. 1142

Nuestras clases son **GRATIS**, gracias al apoyo de la Oficina del Superintendente Estatal de Educación (OSSE).



# TABLE OF CONTENTS

<b>14</b>	<b>July At-A-Glance</b>
<b>15</b>	<b>July Offerings</b>
<b>27</b>	<b>August At-A-Glance</b>
<b>29</b>	<b>August Offerings</b>
<b>42</b>	<b>September At-A-Glance</b>
<b>43</b>	<b>September Offerings</b>
<b>57</b>	<b>Online Training</b>
<b>60</b>	<b>CPR Resources</b>
<b>61</b>	<b>OSSE-Certified Trainer Resource Guide</b>

## CONTACT US!

---

If you have any questions, comments, or concerns, please feel free to contact the Early Learning Professional Development Unit via e-mail.

[Julie.Wennekes@dc.gov](mailto:Julie.Wennekes@dc.gov)

Julie Wennekes, Professional Development Unit Supervisor

[Diane.Mason@dc.gov](mailto:Diane.Mason@dc.gov)

Diane Mason, Program Support Specialist

[Janice.Edwards@dc.gov](mailto:Janice.Edwards@dc.gov)

Dr. Janice Edwards, DC Child Care Connections





## **CHILD CARE AND DEVELOPMENT BLOCK GRANT ACT (CCDBG): REQUIRED HEALTH AND SAFETY TRAINING**

On Nov. 19, 2014, President Obama signed the Child Care and Development Block Grant (CCDBG) Act of 2014 into law. This law reauthorizes the child care program for the first time since 1996, and represents a historic re-envisioning of the Child Care and Development Fund (CCDF) program. The law made significant advancements, including defining health and safety requirements for child care providers. As part of the law, states<sup>1</sup> must have health and safety training requirements, and training and professional development requirements in place by Sept. 30, 2016.

### **Health and safety requirements and training include the following 12 topic areas:**

- |  |   |
|--|---|
| 1. Prevention and control of infectious diseases (including immunization);   | 7. Emergency preparedness and response planning for emergencies resulting from a natural disaster, or a man-caused event (such as violence at a child care facility); |
| 2. Prevention of sudden infant death syndrome and use of safe sleep practices (if serving infants and toddlers);                           | 8. Handling and storage of hazardous materials and the appropriate disposal of bio contaminants;  |
| 3. Administration of medication, consistent with standards for parental consent;   | 9. Appropriate precautions in transporting children (if applicable) <sup>3</sup> ;  |
| 4. Prevention/response to emergencies due to food and allergic reactions;  | 10. Pediatric first-aid and CPR; and  |
| 5. Building and physical premises safety, including identification of and protection from hazards, bodies of water, and vehicular traffic; | 11. Recognition and reporting of child abuse and neglect.   |
| 6. Prevention of shaken baby syndrome, abusive head trauma, and child maltreatment <sup>2</sup> ;  | 12. Child development   |

Pursuant to the CCDBG Act of 2014 and 29 DCMR 333.2(a), 29 DCMR 338.2(g), and 29 DCMR 352.2(b), new and existing directors, caregivers, and teachers must complete health and safety training in the 12 topic areas listed below. For new directors, caregivers, and teachers, health and safety training in the 12 topic areas must be completed either pre-service or within an orientation period not to exceed three months from the employee's first day of employment. For existing directors, caregivers, and teachers, health and safety training in the 12 topic areas must be completed no later than Sept. 30, 2017, and repeated each year thereafter. Evidence that new and existing directors, caregivers, and teachers have completed health and safety training in the 12 topic areas must be maintained at the child development facility, in the form of a certificate of completion, and be readily available for inspection.

To assist new and existing directors, caregivers, and teachers in meeting these new training requirements, the Division of Early Learning's Professional Development Unit is offering both synchronous (i.e. classroom) and asynchronous (i.e. online) courses that cover the 12 topic areas. In the catalog, you will see the approved classroom (face-to-face) sessions denoted with a blue asterisk. Any session with this symbol fulfills one or more of the required CCDF topics. There are also several e-learning platforms that offer CCDF Health and Safety Training that are OSSE-approved. Individuals can complete all of the required topics, with the exception of First Aid and CPR, using an e-learning platform. Approved e-learning platforms include: Quorum, Better Kid Care, Pro Solutions, Child Care Education Institute, and courses provided by the Center for Disease Control. First Aid and CPR must be taken in person in a classroom setting.

<sup>1</sup> The term "state" means the 50 states and the District of Columbia.

<sup>2</sup> This training topic is only required for providers that provide care for infants and toddlers.

<sup>3</sup> This training topic is only required for providers that offer transportation services to children.

# The Professional Development Resource for Early Childhood Educators



## Free Membership

Includes unlimited training from now until May 25, 2018.



## Convenient

Courses are available 24/7, any time, any place. Over 120 hours of training available!



## Training Credit

CEUs awarded nationwide; approved for state training hours in most states.

## Courses in Spanish Coming Fall 2017!



Includes all of the 120 training hours needed to obtain or renew a Child Development Associate (CDA) credential. We will also get you started on your portfolio!



Quorum includes all of the health and safety training mandated by the CCDBG for providers working with families receiving support from the Child Care and Development Fund (CCDF).

## JULY AT-A-GLANCE

July 5	Supporting Language and Literacy Development and Learning (Day 1) <b>New!</b>
July 6	Supporting Language and Literacy Development and Learning (Day 2) <b>New!</b>
July 6	Trauma and Resilience*
July 6	Toddler Classroom Assessment Scoring System (CLASS): Overview of Emotional and Behavioral Support <b>New!</b>
July 7	Community Emergency Response Team (CERT) Training*
July 7	Food Allergy Prevention and Response in Early Care and Preschool Settings*
July 7	Implementing The Creative Curriculum® for Preschool (Day 1) <b>New!</b>
July 8	Implementing The Creative Curriculum® for Preschool (Day 2) <b>New!</b>
July 8	Director's Corner: Using Social Media to Market Your Early Childhood Program
July 8	Data Basics: Using Data to Enhance Everyday Classroom Practices
July 10	Emergency Preparedness*
July 10	Pre-K Classroom Assessment Scoring System (CLASS) Advanced Session: Classroom Organization <b>New!</b>
July 11	Are You Ready? Emergency Response Training and Plan Development*
July 12	Stewards of Children: Child Sexual Abuse Prevention*
July 13	Prevention and Response to Food Allergies*
July 13	WETA Kids Ready to Learn
July 14	Pre-K Classroom Assessment Scoring System (CLASS): Overview of Instructional Support (with Spanish translation) <b>New!</b>
July 15	Are You Ready? Emergency Response Training and Plan Development*
July 18	Children and Fires, Fire Extinguisher Training and Storage of Hazardous Materials*
July 19	Preventing and Responding to Food Allergies*
July 19	Bike and Helmet Safety* <b>New!</b>
July 20	How to Prevent and Control Infectious Diseases*
July 22	Are You Ready? Emergency Response Training and Plan Development*
July 24	Precautions in Transporting Children*
July 25	Adult/Pediatric First Aid and CPR*
July 25	Are You Ready? Emergency Response Training and Plan Development*
July 25	Infant Safe Sleep Practice*
July 25	Stewards of Children: Child Sexual Abuse Prevention*
July 26	Period of Purple Crying* <b>New!</b>
July 26	Pre-K Classroom Assessment Scoring System (CLASS) Instructional Support Community of Practice (CoP) Session 1- Concept Development <b>New!</b>
July 28	New Directions in Curriculum: Intentional Weekly Planning
July 28	Introduction and Implementation to The Creative Curriculum® for Infants, Toddlers, and Twos (Day 1) <b>New!</b>
July 29	Introduction and Implementation to The Creative Curriculum® for Infants, Toddlers, and Twos (Day 2) <b>New!</b>
July 29	Infant Classroom Assessment Scoring System (CLASS): Overview of Responsive Caregiving (with Spanish translation) <b>New!</b>
July 29	Developmental Milestones for 3 - 5 Year Olds*
July 31	Pre-K Classroom Assessment Scoring System (CLASS): Overview of Classroom Organization <b>New!</b>

\* Denotes a required health and safety course



## JULY OFFERINGS

July

5-6

### Supporting Language and Literacy Development and Learning (2-day session) **NEW!**

**Units/Clock Hours:**

12 Professional Learning Units

**Description:** Using language and literacy as a guide, teachers will learn how to be intentional as they teach important language and literacy skills and incorporate language-rich, meaningful experiences into everyday classroom practices. During these interactive sessions participants will learn how to support language and literacy development and learning for infants, toddlers and two-year olds.

**Date:** Wednesday, July 5, 2017 and Thursday, July 6, 2017

**Time:** 9 a.m. – 4 p.m.

**Location:** National Children's Center - SE Campus, 3400 Martin Luther King Jr. Ave. SE, Washington, DC 20032

**Register by Web:** [bit.ly/2sq8S9d](http://bit.ly/2sq8S9d)

**Sponsor(s):** Teaching Strategies, LLC and OSSE

**Audience:** Infant/toddler teachers, infant/toddler assistant teachers

**Core Knowledge Area:** Curriculum

July

6

### Toddler Classroom Assessment Scoring System (CLASS): Overview of Emotional and Behavioral Support **NEW!**

**Units/Clock Hours:**

3 Professional Learning Units

**Description:** Participants will learn the emotional and behavioral supports needed to promote children's interest, motivations, and points of view. Participants will also learn strategies to enhance children's self-regulation and social skills.

**Date:** Thursday, July 6, 2017

**Time:** 4 - 7 p.m.

**Location:** OSSE, 810 First St. NE, Third Floor, Grand Hall Side B, Washington, DC 20002

**Register by Web:** [bit.ly/2t9FgtQ](http://bit.ly/2t9FgtQ)

**Sponsor(s):** Bradley & Associates, LLC and OSSE

**Audience:** Toddler teachers, assistant teachers, directors

**Core Knowledge Area:** Social-Emotional Development and Mental Health; Child Growth and Development

July

6

### Trauma and Resilience\*

**Units/Clock Hours:**

3 Professional Learning Units

**CCDBG Topic:** Child development

**Description:** In this workshop participants learn how trauma can affect a child's developing brain. During the training the participants will learn how to identify signs of trauma and how to foster resilience in children, so they can develop into emotionally strong adults. How to access local early childhood mental health resources will be discussed.

**Date:** Thursday, July 6, 2017

**Time:** 1 – 4 p.m.

**Location:** DC Child Care Connections, 209 Upshur St. NW, Third Floor, Washington, DC 20011

**Register by Web:** [bit.ly/2t0eR3j](http://bit.ly/2t0eR3j)

**Sponsor(s):** DCPS Early Stages and OSSE

**Audience:** Teachers, assistant teachers, early childhood mental health consultants, family social workers, family support workers and early intervention service coordinators

**Core Knowledge Area:** Social Emotional Development and Mental Health and Child Growth and Development

July

7

### Community Emergency Response Team (CERT) Training\*

**Units/Clock Hours:**

6 Professional Learning Units

**CCDBG Topic:** Emergency preparedness and response planning for emergencies

**Description:** This course teaches basic disaster response skills, fire safety, light search and rescue, CERT team organization, disaster psychology, terrorism awareness, and disaster medical operations.

**Date:** Friday, July 7, 2017

**Time:** 9 a.m. - 4 p.m.

**Location:** Frank D. Reeves Center, 2000 14th St. NW, Suite 101, Washington, DC 20009

**Register by Web:** [bit.ly/2sZOJoZ](http://bit.ly/2sZOJoZ)

**Sponsor(s):** Serve DC and OSSE

**Audience:** All caregivers, teachers, assistant teachers and directors

**Core Knowledge Area:** Health, Safety and Nutrition

July  
7

### Food Allergy Prevention and Response in Early Care and Preschool Settings\*

#### Units/Clock Hours:

2 Professional Learning Units

**CCDBG Topic:** Prevention/response to emergencies due to food and allergic reactions

**Description:** This training will explore the food allergy procedures that should be in place when caring for children in early care and preschool settings according to research-based, Department of Health, Centers for Disease Control and Prevention (CDC) guidelines, and the rights of children with food allergies. Participants will be able to define anaphylaxis, identify common food allergies and their signs and symptoms, outline treatment and management options, learn how to create and follow individual care plans for each child with a food allergy, create and implement a detailed treatment plan in the event of an allergic reaction, and apply and understand best practices for minimizing risks and exposure.

**Date:** Friday, July 7, 2017

**Time:** 11 a.m. – 1 p.m.

**Location:** OSSE, 810 First St. NE, Fourth Floor, Room 4002, Washington, DC 20002

**Register by Web:** [bit.ly/2saBdMC](http://bit.ly/2saBdMC)

**Sponsor(s):** OSSE Wellness and Nutrition

**Audience:** Teachers, assistant teachers, care givers, volunteers, substitutes and directors

**Core Knowledge Area:** Health, Safety and Nutrition

July  
8

### Director's Corner: Using Social Media to Market Your Early Childhood Program

#### Units/Clock Hours:

1 Professional Learning Unit

**Description:** Participants will learn how to use social media as a way to inform the community about their child care program and what it offers to children and families. Participants will learn strategies to promote their program, encourage families to enroll their children and how to create a sustainable communication and public relations plan.

**Date:** Saturday, July 8, 2017

**Time:** 9:30 – 10:30 a.m.

**Location:** Educare DC, 640 Anacostia Ave. NE, Washington, DC 20019

**Register by Web:** [bit.ly/2tykZkG](http://bit.ly/2tykZkG)

**Sponsor(s):** Kids Comprehensive Services and OSSE

**Audience:** Directors and program administrators

**Core Knowledge Area:** Program Management: Operation and Evaluation

July  
7-8

### Implementing The Creative Curriculum® for Preschool (2 day session) **NEW!**

#### Units/Clock Hours:

12 Professional Learning Units

**Description:** Participants will explore The Creative Curriculum® for Preschool in detail and learn how to use it effectively in the classroom. The participants will examine the 38 objectives for development and learning that inform every interaction with children. Teachers will also practice using the curricular volumes, Teaching Guides, and daily resources together to individualize learning and maximize child outcomes.

**Dates:** Friday, July 7, 2017 and Saturday, July 8, 2017

**Time:** 9 a.m. – 4 p.m. daily

**Location:** OSSE, 810 First St. NE, Eighth floor, 806 A & B, Washington, DC 20002

**Register by Web:** [bit.ly/2tuFqOz](http://bit.ly/2tuFqOz)

**Sponsor(s):** Teaching Strategies, OSSE

**Audience:** Teachers, assistant teachers, administrators

July  
8

### Data Basics: Using Data to Enhance Everyday Classroom Practices

#### Units/Clock Hours:

3 Professional Learning Units

**Description:** This training will provide early childhood professionals with best practices on how to use data for continuous quality improvement efforts. Participants will learn to use individual, classroom, or school-wide level data to improve child outcomes and plan for professional development.

**Date:** Saturday, July 8, 2017

**Time:** 10:30 a.m. – 1:30 p.m.

**Location:** Educare DC, 640 Anacostia Ave. NE, Washington, DC 20019

**Register by Web:** [bit.ly/2tuNy1R](http://bit.ly/2tuNy1R)

**Sponsor(s):** Educare and OSSE

**Audience:** Directors, program administrators, teachers, assistant teachers

**Core Knowledge Area:** Program Management: Operation and Evaluation

July

10

**Emergency Preparedness\*****Units/Clock Hours:**

2 Professional Learning Units

**CCDBG Topic:** Emergency preparedness and response planning for emergencies

**Description:** Being prepared for emergencies can make a big difference as to whether or not the children in your care and the staff in your program remain safe. In this course, participants will learn about the necessary steps a program should take to ensure preparedness in the event of an emergency, as well as effective strategies to communicate the emergency plan to children, parents, and staff.

**Date:** Monday, July 10, 2017

**Time:** 9 - 11 a.m.

**Location:** DC Child Care Connections, 209 Upshur St. NW, Third Floor, Washington, DC 20011

**Register by Web:** [bit.ly/2tts7hW](http://bit.ly/2tts7hW)

**Sponsor(s):** Emergency Medical Services for Children and OSSE

**Audience:** All caregivers, teachers, assistant teachers and directors

**Core Knowledge Area:** Health, Safety and Nutrition

July

11

**Are You Ready? Emergency Response Training and Plan Development\***  
(DIRECTORS, ADMINISTRATORS, HOME CARE PROVIDERS ONLY)

**Units/Clock Hours:**

4 Professional Learning Units

**CCDBG Topic:** Emergency preparedness and response planning for emergencies

**Description:** In the event of an emergency, do you and your staff know what to do to protect children and lead them to safety? Planning and practicing the steps you can take before an emergency happens is the best way to protect yourself and the children in your care. OSSE along with Strategic Educational Consulting (SEDC, LLC) has developed a new Emergency Response Plan Template for providers to use in meeting the new licensing regulations. This training session is designed to help participants create a comprehensive plan and complete the template step by step including identification of potential threats near you, setting up an emergency alert system and communicating with parents and first responders. In addition, the training will teach participants the latest strategies on what to do if you have a lockdown, shelter-in-place or evacuate. Participants will practice applying these strategies in a table-top exercise which uses realistic scenarios to stimulate discussion.

**Date:** Tuesday, July 11, 2017

**Time:** 9 a.m. – 1 p.m.

**Location:** Sumner School, 1201 17th St. NW, Washington, DC 20002

**Register by Web:** [bit.ly/2tylUke](http://bit.ly/2tylUke)

**Sponsor(s):** Strategic Educational Consulting and OSSE

**Audience:** Directors, administrators and home care providers

**Core Knowledge Area:** Health, Safety and Nutrition

July

10

**Pre-K Classroom Assessment Scoring System (CLASS) Advanced Session: Classroom Organization NEW!**

**Units/Clock Hours:**

3 Professional Learning Units

**CCDBG Topic:** Child development

**Description:** Participants will explore strategies to help children learn to regulate their own behavior and attention in order to get the most out of instruction and activities. Participants will learn how to monitor effectively and redirect behavior. Participants will also learn the importance of routines, transitions, and planning to maximize time for learning activities, while engaging children through teacher-facilitated activities and use of hands-on materials.

**Date:** Monday, July 10, 2017

**Time:** 1 - 4 p.m.

**Location:** OSSE, 810 First St. NE, Third Floor, Grand Hall Side B, Washington, DC 20002

**Register by Web:** [bit.ly/2tyKEdb](http://bit.ly/2tyKEdb)

**Sponsor(s):** Bradley & Associates, LLC and OSSE

**Audience:** Directors, toddler teachers, assistant teachers

**Core Knowledge Area:** Observing, Documenting and Assessing to Support Young Children and Families; Social-Emotional Development

July

12

**Stewards of Children: Child Sexual Abuse Prevention\***

**Units/Clock Hours:**

2 Professional Learning Units

**CCDBG Topic:** Recognition and reporting child abuse and neglect

**Description:** This training teaches participants how to prevent, recognize and react responsibly to child sexual abuse. The training includes discussion about critical issues in sexual abuse prevention and the relevance of these issues in our communities. Participants will leave with practical skills they can use daily, and knowledge of ways their program can implement policies to proactively reduce the risk of child sexual abuse.

**Date:** Wednesday, July 12, 2017

**Time:** 5 – 7 p.m.

**Location:** Safe Shores, 429 O St. NW, Washington, D.C., 20001

**Register by Web:** [safeshores.org/stewards-of-children.html](http://safeshores.org/stewards-of-children.html) or email [stewards@safeshores.org](mailto:stewards@safeshores.org)

**Sponsor(s):** Safe Shores – The DC Children's Advocacy Center and OSSE

**Audience:** Teachers, administrators, program support staff

**Core Knowledge Area:** Health, Safety, and Nutrition



July  
**13**

### Prevention and Response to Food Allergies\*

**Units/Clock Hours:**  
3 Professional Learning Units

**CCDBG Topic:** Prevention/response to emergencies due to food and allergic reactions

**Description:** This session will discuss the preparation and handling of food for children of all ages, including the consumption of formula, human milk, and solid foods. Participants will also learn how to recognize and respond to food allergies and how to create and follow individual care plans for children with food allergies.

**Date:** Thursday, July 13, 2017

**Time:** 10 a.m. - 1 p.m.

**Location:** DC Child Care Connections, 209 Upshur St. NW, Third Floor, Washington, DC 20011

**Register by Web:** [bit.ly/2t9C3dE](http://bit.ly/2t9C3dE)

**Sponsor(s):** Children's National Health System and OSSE

**Audience:** All infant, toddler and preschool teachers, assistant teachers and directors

**Core Knowledge Area:** Health, Safety and Nutrition

July  
**14**

### Pre-K Classroom Assessment Scoring System (CLASS): Overview of Instructional Support (with Spanish translation) **NEW!**

**Units/Clock Hours:**  
3 Professional Learning Units

**CCDBG Topic:** Child development

**Description:** Participants will learn each dimension within the instructional support domain of the Pre-K CLASS. Participants will also learn how to help children use feedback to deepen skills and knowledge, and how to develop more complex language skills.

**Date:** Friday, July 14, 2017

**Time:** 9:30 a.m. - 12:30 p.m.

**Location:** OSSE, 810 First St. NE, Third Floor, Grand Hall Side B, Washington, DC 20002

**Register by Web:** [bit.ly/2svDNMI](http://bit.ly/2svDNMI)

**Sponsor(s):** Bradley & Associates, LLC and OSSE

**Audience:** Pre-K teachers and assistant teachers

**Core Knowledge Area:** Observing, Documenting and Assessing to Support Young Children and Families; Child Growth and Development

July  
**13**

### WETA Kids Ready To Learn

**Units/Clock Hours:**  
1.5 Professional Learning Units

**Description:** This high-impact session will prepare early childhood educators to nurture a child's natural curiosity and love of learning. Participants will learn to use the appeal and learning goals of PBS KIDS programs, such as Sesame Street and Clifford, to enhance the literacy skills and prepare young children for success in school. The participants will be introduced to 2- 5 new children's books and will receive one of the featured books to add to their classroom library.

**Date:** Thursday, July 13, 2017

**Time:** 1 - 2:30 p.m.

**Location:** OSSE, 810 First St. NE, Fourth floor, Room 4002, Washington, DC 20002

**Register by Web:** [bit.ly/2usUHN0](http://bit.ly/2usUHN0)

**Sponsor(s):** WETA and OSSE

**Audience:** Childcare providers, teachers, after school staff

**Core Knowledge Area:** Curriculum

July  
**15**

### Are You Ready? Emergency Response Training and Plan Development\* (DIRECTORS, ADMINISTRATORS, HOME CARE PROVIDERS ONLY)

**Units/Clock Hours:**  
4 Professional Learning Units

**CCDBG Topic:** Emergency preparedness and response planning for emergencies

**Description:** In the event of an emergency, do you and your staff know what to do to protect children and lead them to safety? Planning and practicing the steps you can take before an emergency happens is the best way to protect yourself and the children in your care. OSSE along with Strategic Educational Consulting (SEDC, LLC) has developed a new Emergency Response Plan Template for providers to use in meeting the new licensing regulations. This training session is designed to help participants create a comprehensive plan and complete the template step by step including identification of potential threats near you, setting up an emergency alert system and communicating with parents and first responders. In addition, the training will teach participants the latest strategies on what to do if you have a lockdown, shelter-in-place or evacuate. Participants will practice applying these strategies in a table-top exercise which uses realistic scenarios to stimulate discussion.

**Date:** Saturday, July 15, 2017

**Time:** 9 a.m. - 1 p.m.

**Location:** OSSE, 810 First St. NE, Grand Hall Side A & B, Washington, DC 20002

**Register by Web:** [bit.ly/2sauMJA](http://bit.ly/2sauMJA)

**Sponsor(s):** Strategic Educational Consulting and OSSE

**Audience:** Directors, administrators, home care providers

**Core Knowledge Area:** Health, Safety and Nutrition

July  
**18**

### Children and Fires, Fire Extinguisher Training and Storage of Hazardous Materials\*

#### Units/Clock Hours:

3 Professional Learning Units

**CCDBG Topic:** Handling and storage of hazardous materials and the disposal of bio contaminants

**Description:** During this hands-on session participants will learn how to properly use and store toxic substances in child care settings. Participants will also learn the parts and function of a fire extinguisher, basic characteristics of children who show interest in fire and how to refer a child to the juvenile fire-setter program.

**Date:** Tuesday, July 18, 2017

**Time:** 1 – 4 p.m.

**Location:** Fire & EMS Department, 1100 4th St. SW, Suite E-700, Washington, DC 20024

**Register by email:** [aleazor.taylor@dc.gov](mailto:aleazor.taylor@dc.gov)

**Sponsor(s):** DC Fire & EMS Department and OSSE

**Audience:** Teachers, assistant teachers, administrators, program support staff

**Core Knowledge Area:** Health, Safety, and Nutrition

July  
**19**

### Preventing and Responding to Food Allergies\*

#### Units/Clock Hours:

2 Professional Learning Units

**CCDBG Topic:** Prevention/response to emergencies due to food and allergic reactions

**Description:** This training will explore the food allergy procedures that should be in place when caring for children in early care and preschool settings according to research-based, Department of Health, Centers for Disease Control and Prevention (CDC) guidelines, and the rights of children with food allergies. Participants will be able to define anaphylaxis, identify common food allergies and their signs and symptoms, outline treatment and management options, learn how to create and follow individual care plans for each child with a food allergy, create and implement a detailed treatment plan in the event of an allergic reaction, and apply and understand best practices for minimizing risks and exposure.

**Date:** Wednesday, July 19, 2017

**Time:** 11 a.m. - 1 p.m.

**Location:** OSSE, 810 First St. NE, Ninth Floor, Room 9014, Washington, DC 20002

**Register by Web:** [bit.ly/2svrfok](http://bit.ly/2svrfok)

**Sponsor(s):** OSSE Wellness and Nutrition

**Audience:** All infant, toddler and preschool teachers, assistant teachers and directors

**Core Knowledge Area:** Health, Safety and Nutrition

July  
**19**

### Bike and Helmet Safety \* **NEW!**

#### Units/Clock Hours:

1 Professional Learning Units

**CCDBG Topic:** Building and physical premises safety

**Description:** Knowing how to ensure proper use of helmets in early learning programs can help protect children from serious brain and head injury. During this session, participants will learn how to prevent avoidable injuries at school and at play, the safest places to walk and ride a bike, and the proper way to fit helmets.

**Date:** Wednesday, July 19, 2017

**Time:** 1 - 2 p.m.

**Location:** OSSE, 810 First St. NE, Third Floor, Grand Hall Side A, Washington, DC 20002

**Register by Web:** [bit.ly/2tveT3T](http://bit.ly/2tveT3T)

**Sponsor(s):** Safe Kids DC Children's National Health System and OSSE

**Audience:** Teachers, assistant teachers, care givers, volunteers, substitutes, directors

**Core Knowledge Area:** Health, Safety and Nutrition

July  
**20**

### How to Prevent and Control Infectious Diseases\*

#### Units/Clock Hours:

2.5 Professional Learning Units

**CCDBG Topic:** Prevention and control of infectious diseases (including immunizations)

**Description:** This session will provide an overview on how to prevent and control infectious diseases, including information on immunizations and influenza.

**Date:** Thursday, July 20, 2017

**Time:** 12:30 - 3:00 p.m.

**Location:** DC Child Care Connections, 209 Upshur St. NW, Third Floor, Washington, DC 20011

**Register by Web:** [bit.ly/2t0cJIX](http://bit.ly/2t0cJIX)

**Sponsor(s):** Children's National Health System and OSSE

**Audience:** All infant, toddler and preschool teachers, assistant teachers and directors

**Core Knowledge Area:** Health, Safety and Nutrition

July  
22

**Are You Ready? Emergency Response Training and Plan Development\*** (DIRECTORS, ADMINISTRATORS, HOME CARE PROVIDERS ONLY)

**Units/Clock Hours:**  
4 Professional Learning Units

**CCDBG Topic:** Emergency preparedness and response planning for emergencies

**Description:** In the event of an emergency, do you and your staff know what to do to protect children and lead them to safety? Planning and practicing the steps you can take before an emergency happens is the best way to protect yourself and the children in your care. OSSE along with Strategic Educational Consulting (SEDC, LLC) has developed a new Emergency Response Plan Template for providers to use in meeting the new licensing regulations. This training session is designed to help participants create a comprehensive plan and complete the template step by step including identification of potential threats near you, setting up an emergency alert system and communicating with parents and first responders. In addition, the training will teach participants the latest strategies on what to do if you have a lockdown, shelter-in-place or evacuate. Participants will practice applying these strategies in a table-top exercise which uses realistic scenarios to stimulate discussion.

**Date:** Saturday, July 22, 2017

**Time:** 9 a.m. - 1 p.m.

**Location:** Next Step Public Charter School, 3047 15th St. NW, Washington, DC 20001

**Register by Web:** [bit.ly/2ut1QwZ](http://bit.ly/2ut1QwZ)

**Sponsor(s):** Strategic Educational Consulting and OSSE

**Audience:** Directors, administrators, home care providers

**Core Knowledge Area:** Health, Safety and Nutrition, Program Management: Operation and Evaluation

July  
25

**Adult/Pediatric First Aid and CPR\***

**Units/Clock Hours:**  
7 Professional Learning Units

**CCDBG Topic:** Pediatric first-aid and CPR

**Description:** With an emphasis on hands-on-learning, the First Aid/CPR/AED courses give participants the skills to save a life. Participants will also learn how diseases are transmitted and will discover preventative measures for limiting the spread of disease in child care facilities.

**Date:** Tuesday, July 25, 2017

**Time:** 9 a.m. - 5 p.m.

**Location:** OSSE, 810 First St. NE, Third Floor, Grand Hall Side A, Washington, DC 20002

**Register by Web:** [bit.ly/2usDcN4](http://bit.ly/2usDcN4)

**Sponsor(s):** The Coles Group and OSSE

**Audience:** All staff members involved in providing direct care to children (teachers, assistant teachers, care givers, volunteers, substitutes, directors, etc.)

**Core Knowledge Area:** Health, Safety and Nutrition

July  
24

**Precautions in Transporting Children\***

**Units/Clock Hours:**  
2 Professional Learning Units

**CCDBG Topic:** Appropriate precautions in transporting children

**Description:** This course provides basic knowledge of transportation regulations, and includes a demonstration on how to properly conduct a vehicle passenger check, the use of child safety restraints required by District law, proper loading, unloading, and monitoring of children. Participants will learn where to find vehicular first aid supplies, and how to conduct emergency procedures and response in the event of accidents or breakdowns.

**Date:** Monday, July 24, 2017

**Time:** 11 a.m. - 1 p.m.

**Location:** OSSE, 810 First St. NE, Fourth Floor, Room 4002, Washington, DC 20002

**Register by Web:** [bit.ly/2u83yVm](http://bit.ly/2u83yVm)

**Sponsor(s):** DC Department of Transportation and OSSE

**Audience:** All infant, toddler and preschool teachers, assistant teachers and directors who provide transportation of any kind (before and after school, field trips, etc.)

**Core Knowledge Area:** Health, Safety and Nutrition

July  
25

**Are You Ready? Emergency Response Training and Plan Development\*** (DIRECTORS, ADMINISTRATORS, HOME CARE PROVIDERS ONLY)

**Units/Clock Hours:**  
4 Professional Learning Units

**CCDBG Topic:** Emergency preparedness and response planning for emergencies

**Description:** In the event of an emergency, do you and your staff know what to do to protect children and lead them to safety? Planning and practicing the steps you can take before an emergency happens is the best way to protect yourself and the children in your care. OSSE along with Strategic Educational Consulting (SEDC, LLC) has developed a new Emergency Response Plan Template for providers to use in meeting the new licensing regulations. This training session is designed to help participants create a comprehensive plan and complete the template step by step including identification of potential threats near you, setting up an emergency alert system and communicating with parents and first responders. In addition, the training will teach participants the latest strategies on what to do if you have a lockdown, shelter-in-place or evacuate. Participants will practice applying these strategies in a table-top exercise which uses realistic scenarios to stimulate discussion.

**Date:** Tuesday, July 25, 2017

**Time:** 9 a.m. - 1 p.m.

**Location:** Sumner School, 1201 17th St. NW, Washington, DC 20002

**Register by Web:** [bit.ly/2t9KHJi](http://bit.ly/2t9KHJi)

**Sponsor(s):** Strategic Educational Consulting and OSSE

**Audience:** Director, administrators, home care providers

**Core Knowledge Area:** Health, Safety and Nutrition, Program Management: Operation and Evaluation



July

25

**Infant Safe Sleep Practices\*****Units/Clock Hours:**

2 Professional Learning Units

**CCDBG Topic:** Prevention of sudden infant death syndrome (SIDS) and use of safe sleep practices

**Description:** Participants in this course will identify behaviors that increase the risk of SIDS and sleep related infant deaths, learn ways to reduce the risk of SIDS in child care settings, and learn how to communicate with parents and other caregivers about safe sleep practices. This course reflects the American Academy of Pediatrics' revised recommendations for a safe sleep environment.

**Date:** Tuesday, July 25, 2017

**Time:** 10 a.m. - 12 p.m.

**Location:** Department of Health, 899 North Capitol St. NE, 3rd Floor, Washington, DC 20002

**Register by Web:** [bit.ly/2ttzWEn](http://bit.ly/2ttzWEn)

**Sponsor(s):** DC Department of Health, Community Health Administration and OSSE

**Audience:** Teachers, assistant teachers, care givers, volunteers, substitutes, directors

**Core Knowledge Area:** Health, Safety and Nutrition

July

26

**Period of Purple Crying\* NEW!****Units/Clock Hours:**

1 Professional Learning Units

**CCDBG Topic:** Shaken Baby Syndrome/Abusive Head Trauma

**Description:** This training will introduce the Shaken Baby Syndrome/Abusive Head Trauma and infant abuse prevention. This session will include discussion about common injuries, coping mechanisms, and a simulation of injuries that could result when a baby is shaken.

**Date:** Wednesday, July 26, 2017

**Time:** 11 a.m. - 12 p.m.

**Location:** Children's National Medical Center, 111 Michigan Ave. NW, West Wing, Fifth Floor, Board Room, Washington, DC 20010

**Register by Web:** [bit.ly/2ttPQyB](http://bit.ly/2ttPQyB)

**Sponsor(s):** Children's National Health System and OSSE

**Audience:** Teachers, assistant teachers, child care providers, substitutes, directors, parents, nurses, physicians, social workers, family support staff

**Core Knowledge Area:** Child Growth and Development, Health, Safety and Nutrition

July

25

**Stewards of Children: Child Sexual Abuse Prevention\*****Units/Clock Hours:**

2 Professional Learning Units

**CCDBG Topic:** Recognition and reporting child abuse and neglect

**Description:** This training teaches participants how to prevent, recognize and react responsibly to child sexual abuse. The training includes discussion about critical issues in sexual abuse prevention and the relevance of these issues in our communities. Participants will leave with practical skills they can use daily and knowledge of ways their program can implement policies to proactively reduce the risk of child sexual abuse.

**Date:** Tuesday, July 25, 2017

**Time:** 10 a.m. - 12 p.m.

**Location:** Safe Shores, 429 O St. NW, Washington, DC 20001

**Register by Web:** [safeshores.org/stewards-of-children.html](http://safeshores.org/stewards-of-children.html) or email [stewards@safeshores.org](mailto:stewards@safeshores.org)

**Sponsor(s):** Safe Shores - The DC Children's Advocacy Center and OSSE

**Audience:** Teachers, administrators, support staff

**Core Knowledge Area:** Health, Safety, and Nutrition

July

26

**Pre-K Classroom Assessment Scoring System (CLASS) Instructional Support Community of Practice (CoP) - Session 1: Concept Development****Units/Clock Hours:**

3 Professional Learning Units

**CCDBG Topic:** Child development

**Description:** During this three-session CoP, participants will learn each dimension within the Instructional support domain, and apply best practices to support effective teacher-child interactions. Participants will learn the meaning of concept development, how to teach children to apply concepts learned to the real world, and problem-solve. **Participants must register, and attend, all three CoP sessions.**

**Date:** Wednesday, July 26, 2017

**Time:** 1 - 4 p.m.

**Location:** OSSE, 810 First St. NE, Eighth Floor, 806 A & B, Washington, DC 20002

**Register by Web:** [bit.ly/2ta7KDJ](http://bit.ly/2ta7KDJ)

**Sponsor(s):** Bradley & Associates, LLC and OSSE

**Audience:** Pre-K teachers, assistant teachers, instructional coaches, technical assistants

**Core Knowledge Area:** Observing, Documenting and Assessing to Support Young Children and Families; Child Growth and Development

July  
28

### New Directions in Curriculum: Intentional Weekly Planning

#### Units/Clock Hours:

3 Professional Learning Units

**Description:** Teachers will work together to develop intentional planning strategies, discuss and complete a “Weekly Planning Form,” and share planning ideas related to objectives for children’s development and learning. At the conclusion of this session, teachers will understand why it is important to plan meaningful learning experiences intentionally.

**Date:** Friday, July 28, 2017

**Time:** 1 – 4 p.m.

**Location:** Matthews Memorial Baptist Church, 2616 Martin Luther King Jr. Ave. SE, Washington, DC 20020

**Register by Web:** [bit.ly/2spThXr](http://bit.ly/2spThXr)

**Sponsor(s):** Teaching Strategies and OSSE

**Audience:** Teachers, assistant teachers

**Core Knowledge Area:** Curriculum

July  
29

### Infant Classroom Assessment Scoring System (CLASS): Overview of Responsive Caregiving (Spanish translation)

#### Units/Clock Hours:

3 Professional Learning Units

**CCDBG Topic:** Child development

**Description:** Participants will learn ways to respond and interact with infants during their play, routines and other exploration activities. Participants will also learn techniques that will stimulate and facilitate early language development during infancy.

**Date:** Saturday, July 29, 2017

**Time:** 9 a.m. – 12 p.m.

**Location:** 2312 Rhode Island Ave. NE, Washington, DC 20018

**Register by Web:** [bit.ly/2sqr3M2](http://bit.ly/2sqr3M2)

**Sponsor(s):** Bradley & Associates, LLC and OSSE

**Audience:** Infant teachers, assistant teachers, instructional coaches, technical assistants

**Core Knowledge Area:** Child Growth and Development; Social Emotional Development and Mental Health

July  
28  
–  
29

### Introduction and Implementation to The Creative Curriculum® for Infants, Toddlers, and Twos **NEW!**

#### Unit/Clock Hours:

12 Professional Learning Units

**Description:** This two day, hands-on session guides teachers and caregivers through every component of the expanded The Creative Curriculum® for Infants, Toddlers & Twos. This session will introduce a research-based, comprehensive curriculum that focuses on building warm, nurturing relationships with the youngest learners and intentionally promote their development and learning in all areas.

**Date:** Friday, July 28, 2017 and Saturday, July 29, 2017

**Time:** 9 a.m. – 4 p.m.

**Location (July 28):** OSSE, 810 First St. NE, Eighth Floor, 806 A & B, Washington, DC 20002

**Location (July 29):** OSSE, 810 First St. NE, Third Floor, Grand Hall A & B, Washington, DC 20002

**Register by Web:** [bit.ly/2t0gvSt](http://bit.ly/2t0gvSt)

**Sponsor(s):** Teaching Strategies and OSSE

**Audience:** Infant/toddler teachers, assistant teachers

**Core Knowledge Area:** Curriculum

July  
29

### Developmental Milestones for 3 - 5 Year Olds\*

#### Units/Clock Hours:

2 Professional Learning Units

**CCDBG Topic:** Child development

**Description:** This workshop provides an overview of typical developmental milestones for children between the ages of three and five in the following domains: communication, gross motor, fine motor, social-emotional, and cognitive. It also provides sample intervention strategies for each domain, and the opportunity for participants to create their own classroom strategies.

**Date:** Saturday, July 29, 2017

**Time:** 10 a.m. – 12 p.m.

**Location:** Anacostia Neighborhood Library, 1800 Good Hope Rd. SE, Washington, DC 20020

**Register by Web:** [bit.ly/2utj7X4](http://bit.ly/2utj7X4)

**Sponsor(s):** Early Stages, DC Public Schools and OSSE

**Audience:** Parents, teachers, healthcare providers, childcare staff, community members

**Core Knowledge Area:** Child Growth and Development

July

31

## Pre-K Classroom Assessment Scoring System (CLASS): Overview of Classroom Organization

### Units/Clock Hours:

3 Professional Learning Units

**Description:** Participants will learn each dimension within the classroom organization domain of the pre-K CLASS. Participants will learn strategies to manage children's behavior and create a classroom conducive for learning.

**Date:** Monday, July 31, 2017

**Time:** 9:30 a.m. – 12:30 p.m.

**Location:** OSSE, 810 First St. NE, Eighth Floor, 806 A & B, Washington, DC 20002

**Register by Web:** [bit.ly/2saCaEC](http://bit.ly/2saCaEC)

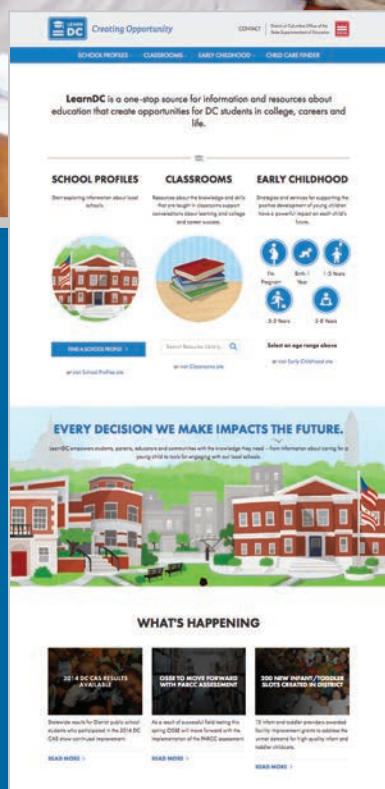
**Sponsor(s):** Bradley & Associates, LLC and OSSE

**Audience:** Pre-K teachers, assistant teachers, instructional coaches, technical assistants

**Core Knowledge Area:** Observing, Documenting and Assessing to Support Young Children and Families; Social Emotional Development and Mental Health; Learning Environments







.....  
An Online Community of Educational Learning and Discovery  
.....

Start learning today at  
**LearnDC.org**

.....  
Learn DC.org empowers students, parents, parents, educators and communities with the knowledge they need to be successful. LearnDC.org offers a wealth of data on local schools, including student achievement and school performance, and provides resources for parents seeking quality child care.  
.....

.....  
An Initiative of the Office of the State Superintendent of Education  
.....



osse.dc.gov

 facebook.com/ossedc

 @OSSEDC

 202.727.6436



# CHILD DEVELOPMENT ASSOCIATE

Do you love working with children? Do you want to help them learn the basic physical and intellectual skills they will need to succeed in life?

The Workforce Development and Lifelong Learning (WDLL) division of the UDC-Community College is proud to offer the Child Development Associate training program. This course teaches you the theory and practical skills you will need to care for infants and toddlers in family day care and in infant/toddler/preschool classrooms. It will prepare you to apply for the Child Development Associate (CDA) credential, the most widely recognized credential in early childhood education.

## How do I become certified?

Once a student completes the course, they will be eligible to apply for the Child Development Associate credential, administered by the Council for Professional Recognition. The application requires the following:

- 480 hours of experience working with children within the past three years in a licensed child development center, home, or school
- Verification visit by a trained Professional Development Specialist
- Creation of a professional portfolio
- Distribution and collection of Family Questionnaires
- Completion of the Direct Assessment Application
- CDA exam

## How long is the program?

**126 hours over 12 weeks**

Check the class schedule at [cc.udc.edu/wd](http://cc.udc.edu/wd) for locations and dates.

## How do I enroll?

Call or visit any of the WDLL locations. Visit <http://cc.udc.edu/wd> for more information.

## How much does it cost?

This program is offered at no cost to eligible DC residents.



To learn more, please visit <http://cc.udc.edu/wd>

# Early Literacy Series

Aug. 28 – 30 & Sept. 12

## SESSION 1:

### **Closing the Achievement Gap- Building Vocabulary**

**Units/Clock Hours:** 6 Professional Learning Units

We often hear that teachers and educational leaders must do more to “close the achievement gap,” but HOW should this be accomplished? This session addresses the root causes of the disparity between children’s educational success. To close the achievement gap, we must recognize the power of word knowledge (vocabulary); it is the KEY to text comprehension and reading success.

**Date:** Monday, Aug. 28, 2017

**Time:** 9 a.m. – 3 p.m.

**Location:** OSSE, 810 First St. NE, Washington, DC 20002, Third Floor, Grand Hall Side B

## SESSION 2:

### **Differentiation Makes a Difference: Using Flexible Grouping to Meet the Learning Needs of Early Readers**

**Units/Clock Hours:** 4 Professional Learning Units

Every year Kindergarten – 3rd grade teachers work diligently to meet the learning needs of a diverse classroom of children. The literacy skills within a typical classroom often span five years – from learning letters to reading chapter books. Differentiating instruction can be difficult and complex. This session, however, will provide support and guidance to help teachers establish and manage a differentiated classroom. The presenter will use video clips, planning guides, and other resources that will assist the teacher better understand the power and process of differentiating literacy instruction.

**Date:** Tuesday, Aug. 29, 2017

**Time:** 9 a.m. – 1 p.m.

**Location:** OSSE, 810 First St. NE, Third Floor, Grand Hall Side A, Washington, DC 20002

## SESSION 3:

### **The Pinnacle of Reading – Text Comprehension**

**Units/Clock Hours:** 6 Professional Learning Units

Comprehension is the “pinnacle” of reading! If a child masters decoding words and “reads” fluently, but does not comprehend text, there is no meaning to the words on the page and the child is not gaining knowledge. This session focuses on instructional strategies to build children’s comprehension skills. How can we support the joy of reading so children WANT to read?

**Date:** Wednesday, Aug. 30, 2017

**Time:** 9 a.m. – 3 p.m.

**Location:** OSSE, 810 First St. NE, Washington, DC 20002, Third Floor, Grand Hall Side A

## SESSION 4:

### **The Reading – Writing Connection: Establishing Writing Workshop in K-3 Classrooms**

**Units/Clock Hours:** 6 Professional Learning Units

This interactive session focuses on the connection between reading and writing and how a ‘Writing Workshop’ model can support and strengthen children’s literacy skills. The presenter will use video tapes and planning guides to provide participants with an understanding of how to establish and manage ‘Writing Workshop’ in their classrooms.

**Date:** Tuesday, Sept. 12, 2017

**Time:** 9 a.m. – 3 p.m.

**Location:** OSSE, 810 First St. NE, Washington, DC 20002, Third Floor, Grand Hall Side B

## To register for one or all of the sessions

**Session 1:** [bit.ly/2u5Haht](http://bit.ly/2u5Haht)

**Session 2:** [bit.ly/2tGqmM3](http://bit.ly/2tGqmM3)

**Session 3:** [bit.ly/2sHUG7M](http://bit.ly/2sHUG7M)

**Session 4:** [bit.ly/2uaLqNR](http://bit.ly/2uaLqNR)



## AUGUST AT-A-GLANCE

Aug. 2	Pre-K Classroom Assessment Scoring System (CLASS) Instructional Support Community of Practice - Session 2: Quality of Feedback <b>New!</b>
Aug. 3	Pre-K Classroom Assessment Scoring System (CLASS) Advanced Session: Classroom Organization <b>New!</b>
Aug. 3	Trauma and Resilience*
Aug. 5	Are You Ready? Emergency Response Training and Plan Development*
Aug. 5	Introduction to The Creative Curriculum® for Family Child Care (in Spanish) <b>New!</b>
Aug. 5	Pre-K Classroom Assessment Scoring System (CLASS): Overview of Emotional and Behavioral Support <b>New!</b>
Aug. 8	Infant Classroom Assessment Scoring System (CLASS): Overview of Responsive Caregiving (with Spanish translation) <b>New!</b>
Aug. 8	Stewards of Children: Child Sexual Abuse Prevention*
Aug. 9	Pre-K Classroom Assessment Scoring System (CLASS) Instructional Support Community of Practice (CoP) - Session 3: Language Modeling <b>New!</b>
Aug. 10	Are You Ready? Emergency Response Training and Plan Development*
Aug. 10	Period of Purple Crying* <b>New!</b>
Aug. 10	Cradling Literacy: Train-the-Trainer Two Day Course (Day 1)
Aug. 11	Cradling Literacy: Train-the-Trainer Two Day Course (Day 2)
Aug. 11	Community Emergency Response Team (CERT) Training*
Aug. 12	Director's Corner: Successful Business Planning - Moving Forward Together <b>New!</b>
Aug. 12	Marketing Strategies for Your Early Childhood Program (Part 1) <b>New!</b>
Aug. 14	Breathing Easy: Asthma Training for Caregivers of Young Children
Aug. 15	Pre-K Classroom Assessment Scoring System (CLASS) Instructional Support Community of Practice (CoP) - Session 1: Concept Development <b>New!</b>
Aug. 15	Coaching Teachers to Fidelity of Implementation of The Creative Curriculum® (Day 1) <b>New!</b>
Aug. 16	Coaching Teachers to Fidelity of Implementation of The Creative Curriculum® (Day 2) <b>New!</b>
Aug. 16	Preventing and Responding to Food Allergies*
Aug. 16	Bike and Helmet Safety <b>New!</b>
Aug. 16	Marketing Your Early Childhood Program (Part 2) <b>New!</b>
Aug. 17	WETA Kids Ready to Learn
Aug. 21	Period of Purple Crying* <b>New!</b>
Aug. 22	Adult/Pediatric First Aid and CPR*
Aug. 22	Infant Safe Sleep Practices*
Aug. 22	Children and Fires, Fire Extinguisher Training and Storage of Hazardous Materials*
Aug. 22	Pre-K Classroom Assessment Scoring System (CLASS) Instructional Support Community of Practice (CoP) - Session 2: Quality of Feedback <b>New!</b>
Aug. 23	How to Prevent and Control Infectious Diseases*
Aug. 23	Toddler Classroom Assessment Scoring System (CLASS): Overview of Engaged Support for Learning (with Spanish translation) <b>New!</b>
Aug. 24	Building and Physical Premises Safety*
Aug. 25	Food Allergy Prevention and Response*
Aug. 28	Administration of Medication Training*
Aug. 28	Early Literacy Series Session 1: Closing the Achievement Gap – Building Vocabulary
Aug. 28	Precautions in Transporting Children*
Aug. 28	Stewards of Children: Child Sexual Abuse Prevention*
Aug. 28	Period of Purple Crying* <b>New!</b>
Aug. 29	Early Literacy Series Session 2: Differentiation Makes a Difference: Using Flexible Grouping to Meet the Learning Needs of Early Readers
Aug. 29	Pre-K Classroom Assessment Scoring System (CLASS) Instructional Support Community of Practice (CoP) - Session 3: Language Modeling <b>New!</b>
Aug. 30	Early Literacy Series Session 3: The Pinnacle of Reading – Text Comprehension
Aug. 31	Data Basics: Using Data to Enhance Everyday Classroom Practice
Aug. 31	Period of Purple Crying* <b>New!</b>

\* Denotes a required health and safety course



# Cradling Literacy Train-the Trainer

**Zero-to-Three's Cradling Literacy Train-the Trainer** prepares participants to work with teachers in building their capacity to support early language and literacy development. It provides a holistic approach to the understanding of early language and literacy, cradling it in the context of early development, important caregiving relationships and family culture. The Cradling Literacy approach helps caregivers deepen their understanding, knowledge and skills.

## Strategies include:

- Emergent literacy in dual language learners
- Social-emotional literacy in young children
- Early learning through storytelling
- Young children's cultural identity
- Relationships that promote language and literacy development

## DATE

Thursday and Friday  
August 10 & August 11, 2017

## TIME

8:30 a.m. - 4:00 p.m.

## LOCATION

OSSE  
810 First St. NE,  
Third Floor,  
Grand Hall Side A & B  
Washington, DC 20002

## REGISTRATION

Register by Web: [bit.ly/2syEREk](http://bit.ly/2syEREk)



## AUGUST OFFERINGS

Aug.  
**2**

### Pre-K Classroom Assessment Scoring System (CLASS) Instructional Support Community of Practice - Session 2: Quality of Feedback **NEW!**

**Units/Clock Hours:**  
3 Professional Learning Units

**CCDBG Topic:** Child development

**Description:** During the second session, participants will learn how to stimulate children's thinking and learning. Participants will learn how to provide quality feedback by asking follow-up questions and providing information in response to children's actions or comments. **Participants must register and attend all three CoP sessions.**

**Date:** Wednesday, Aug. 2, 2017

**Time:** 1 – 4 p.m.

**Location:** OSSE, 810 First St. NE, Eighth Floor, Room 806 A & B, Washington, DC 20002

**Register by Web:** [bit.ly/2syUGdW](http://bit.ly/2syUGdW)

**Sponsor(s):** Bradley & Associates, LLC and OSSE

**Audience:** Preschool teachers, assistant teachers, directors

**Core Knowledge Area:** Observing, Documenting and Assessing to Support Young Children and Families; Child Growth and Development

Aug.  
**3**

### Trauma and Resilience\*

**Units/Clock Hours:**  
3 Professional Learning Units

**CCDBG Topic:** Child development

**Description:** In this workshop participants learn how trauma can affect a child's developing brain. During the training the participants will learn how to identify signs of trauma and how to foster resilience in children, so they can develop into emotionally strong adults. How to access local early childhood mental health resources will be discussed.

**Date:** Thursday, Aug. 3, 2017

**Time:** 1 – 4 p.m.

**Location:** DC Child Care Connections, 209 Upshur St. NW, Third Floor, Washington, DC 20011

**Register by Web:** [bit.ly/2tErLoq](http://bit.ly/2tErLoq)

**Sponsor(s):** DCPS Early Stages and OSSE

**Audience:** Teachers, assistant teachers, early childhood mental health consultants, family social workers, family support workers and early intervention service coordinators

**Core Knowledge Area:** Social Emotional Development and Mental Health and Child Growth and Development

Aug.  
**3**

### Pre-K Classroom Assessment Scoring System (CLASS) Advanced Session: Classroom Organization **NEW!**

**Units/Clock Hours:**  
3 Professional Learning Units

**CCDBG Topic:** Child development

**Description:** Participants will explore strategies to help children learn to regulate their own behavior and attention in order to get the most out of instruction and activities. Participants will learn to effectively monitor and redirect behavior. Participants will also learn the importance of routines, transitions and planning to maximize time for learning activities, while engaging children through teacher-facilitated activities and use of hands-on materials.

**Date:** Thursday, Aug. 3, 2017

**Time:** 9:30 a.m. – 12:30 p.m.

**Location:** OSSE, 810 First St. NE, Eighth Floor, Room 806 A & B, Washington, DC 20002

**Register by Web:** [bit.ly/2uCyxbr](http://bit.ly/2uCyxbr)

**Sponsor(s):** Bradley & Associates, LLC and OSSE

**Audience:** Pre-K teachers, assistant teachers, directors who have completed the Overview of Classroom Organization session

**Core Knowledge Area:** Observing, Documenting and Assessing to Support Young Children and Families; Social-Emotional Development and Mental Health; Child Growth and Development

Aug.  
**5**

### Are You Ready? Emergency Response Training and Plan Development\* (DIRECTORS, ADMINISTRATORS, HOME CARE PROVIDERS ONLY)

**Units/Clock Hours:**  
4 Professional Learning Units

**CCDBG Topic:** Emergency preparedness and response planning for emergencies

**Description:** In the event of an emergency, do you and your staff know what to do to protect children and lead them to safety? Planning and practicing the steps you can take before an emergency happens is the best way to protect yourself and the children in your care. OSSE along with Strategic Educational Consulting (SEDC, LLC) has developed a new Emergency Response Plan Template for providers to use in meeting the new licensing regulations. This training session is designed to help participants create a comprehensive plan and complete the template step by step including identification of potential threats near you, setting up an emergency alert system and communicating with parents and first responders. In addition, the training will teach participants the latest strategies on what to do if you have to lockdown, shelter-in-place or evacuate. Participants will practice applying these strategies in a table-top exercise which uses realistic scenarios to stimulate discussion.

**Date:** Saturday, Aug. 5, 2017

**Time:** 9 a.m. – 1 p.m.

**Location:** OSSE, 810 First St. NE, Third Floor, Grand Hall A & B, Washington, DC 20002

**Register by Web:** [bit.ly/2tJ1i9Q](http://bit.ly/2tJ1i9Q)

**Sponsor(s):** Strategic Educational Consulting and OSSE

**Audience:** Directors, administrators and home care providers

**Core Knowledge Area:** Health, Safety and Nutrition



Aug.

5

**Introduction to The Creative Curriculum® for Family Child Care (in Spanish) NEW!****Units/Clock Hours:**

6 Professional Learning Units

**Description:** Teachers and caregivers will discover ways to successfully implement The Creative Curriculum® for Family Child Care providers. The session will guide participants through a comprehensive, research-based, developmentally appropriate curriculum that addresses the specific needs of the family child care community. At the conclusion of this session teachers will understand how to apply The Creative Curriculum in the family child care home environment.

**Date:** Saturday, Aug. 5, 2017

**Time:** 9 a.m. – 4 p.m.

**Location:** OSSE, 810 First St. NE, Eighth floor, 806 A & B, Washington, DC 20002

**Register by Web:** [bit.ly/2sj1U1T](http://bit.ly/2sj1U1T)

**Sponsor(s):** Teaching Strategies, Kids Comprehensive Services, LLC and OSSE

**Audience:** Infant/toddler teachers and assistant teachers

**Core Knowledge Area:** Curriculum

Aug.

8

**Infant Classroom Assessment Scoring System (CLASS): Responsive Caregiving (with Spanish translation) NEW!****Units/Clock Hours:**

3 Professional Learning Units

**CCDBG Topic:** Child development

**Description:** Participants will learn the ways to respond and interact with infants during their play, routines and other explorative activities. Participants will also learn techniques that will stimulate and facilitate early language development during infancy.

**Date:** Tuesday, Aug. 8, 2017

**Time:** 1 – 4 p.m.

**Location:** OSSE, 810 First St. NE, Eighth Floor, Room 806 A & B, Washington, DC 20002

**Register by Web:** [bit.ly/2tF58Ad](http://bit.ly/2tF58Ad)

**Sponsor(s):** Bradley & Associates, LLC and OSSE

**Audience:** Infant teachers, assistant teachers, directors

**Core Knowledge Area:** Child Growth and Development; Social Emotional Development and Mental Health

Aug.

5

**Pre-K Classroom Assessment Scoring System (CLASS): Overview of Emotional and Behavioral Support NEW!****Units/Clock Hours:**

3 Professional Learning Units

**Description:** Participants will learn the emotional and behavioral supports needed to promote children's self-regulation and social skills. Participants will learn strategies to effectively monitor and redirect children's behavior.

**Date:** Saturday, Aug. 5, 2017

**Time:** 9 a.m. – 12 p.m.

**Location:** 2312 Rhode Island Ave. NE, Washington DC 20018

**Register by Web:** [bit.ly/2uCFVDN](http://bit.ly/2uCFVDN)

**Sponsor(s):** Bradley & Associates, LLC and OSSE

**Audience:** Preschool teachers, assistant teachers, directors

**Core Knowledge Area:** Observing, Documenting and Assessing to Support Young Children and Families; Social Emotional Development and Mental Health

Aug.

8

**Stewards of Children: Child Sexual Abuse Prevention\*****Units/Clock Hours:**

2 Professional Learning Units

**CCDBG Topic:** Recognition and reporting child abuse and neglect

**Description:** This training teaches participants how to prevent, recognize and react responsibly to child sexual abuse. The training includes discussion about critical issues in sexual abuse prevention and the relevance of these issues in our communities. Participants will leave with practical skills they can use daily, and knowledge of ways their program can implement policies to proactively reduce the risk of child sexual abuse.

**Date:** Tuesday, Aug. 8, 2017

**Time:** 3 – 5 p.m.

**Location:** Safe Shores, 429 O St. NW, Washington, D.C., 20001

**Register by Web:** [safeshores.org/stewards-of-children.html](http://safeshores.org/stewards-of-children.html) or [email stewards@safeshores.org](mailto:stewards@safeshores.org)

**Sponsor(s):** Safe Shores – The DC Children's Advocacy Center and OSSE

**Audience:** Teachers, administrators, program support staff

**Core Knowledge Area:** Health, Safety, and Nutrition

Aug.

9

### Pre-K Classroom Assessment Scoring System (CLASS) Instructional Support Community of Practice (CoP) - Session 3: Language Modeling **NEW!**

#### Units/Clock Hours:

3 Professional Learning Units

**CCDBG Topic:** Child development

**Description:** In the last session of the instructional support CoP, participants will learn strategies on how to respond, communicate, and expose children to different uses and forms of language. Teachers will also learn how to explicitly introduce new vocabulary words. **Participants must register and attend all three CoP sessions.**

**Date:** Wednesday, Aug. 9, 2017

**Time:** 1 – 4 p.m.

**Location:** OSSE, 810 First St. NE, Eighth Floor, Room 806 A & B, Washington, DC 20002

**Register by Web:** [bit.ly/2tj7wdE](http://bit.ly/2tj7wdE)

**Sponsor(s):** Bradley & Associates, LLC and OSSE

**Audience:** Preschool teachers, assistant teachers, directors

**Core Knowledge Area:** Observing, assessing and documenting; Child Growth and Development

Aug.

10

### Are You Ready? Emergency Response Training and Plan Development\* (DIRECTORS, ADMINISTRATORS, HOME CARE PROVIDERS ONLY)

#### Units/Clock Hours:

4 Professional Learning Units

**CCDBG Topic:** Emergency preparedness and response planning for emergencies

**Description:** In the event of an emergency, do you and your staff know what to do to protect children and lead them to safety? Planning and practicing the steps you can take before an emergency happens is the best way to protect yourself and the children in your care. OSSE along with Strategic Educational Consulting (SEDC, LLC) has developed a new Emergency Response Plan Template for providers to use in meeting the new licensing regulations. This training session is designed to help participants create a comprehensive plan and complete the template step by step including identification of potential threats near you, setting up an emergency alert system and communicating with parents and first responders. In addition, the training will teach participants the latest strategies on what to do if you have to lockdown, shelter-in-place or evacuate. Participants will practice applying these strategies in a table-top exercise which uses realistic scenarios to stimulate discussion.

**Date:** Thursday, Aug. 10, 2017

**Time:** 9 a.m. – 1 p.m.

**Location:** OSSE, 810 First St. NE, Eighth Floor, 806 A & B, Washington, DC 20002

**Register by Web:** [bit.ly/2t9ljnB](http://bit.ly/2t9ljnB)

**Sponsor(s):** Strategic Educational Consulting and OSSE

**Audience:** Directors, administrators and home care providers

**Core Knowledge Area:** Health, Safety and Nutrition

Aug.

10

### Period of Purple Crying\* **NEW!**

#### Units/Clock Hours:

1 Professional Learning Units

**CCDBG Topic:** Prevention of shaken baby syndrome, abusive head trauma and child maltreatment

**Description:** This training will introduce the Shaken Baby Syndrome/Abusive Head Trauma and infant abuse prevention. This session will include discussion of common injuries, coping mechanisms and a simulation of injuries that could occur when a baby is shaken.

**Date:** Thursday, Aug. 10, 2017

**Time:** 11 a.m. - 12 p.m.

**Location:** Children's National Medical Center, 111 Michigan Ave. NW, West Wing, Fifth Floor, Board Room, Washington, DC 20010

**Register by Web:** [bit.ly/2uD374N](http://bit.ly/2uD374N)

**Sponsor(s):** Children's National Health System and OSSE

**Audience:** Teachers, assistant teachers, care givers, volunteers, substitutes, directors

**Core Knowledge Area:** Health, Safety and Nutrition

Aug.

10

11

### Cradling Literacy: Train-the-Trainer (Two Day Course)

#### Units/Clock Hours:

6 Professional Learning Units

**Description:** This interactive training prepares trainers to work with teachers in building their capacity to support early language and literacy development. It provides a holistic approach to the understanding of early language and literacy, cradling it in the context of early development, important caregiving relationships and family culture. The Cradling Literacy approach helps caregivers deepen their understanding, knowledge and skills. **Participants must register for, and attend, both sessions.**

**Date:** Aug. 10, 2017 and Aug. 11, 2017

**Time:** 8:30 a.m. - 4:30 p.m.

**Location:** OSSE, 810 First St. NE, Third Floor, Grand Hall A & B, Washington, DC 20002

**Register by Web:** [bit.ly/2syEREK](http://bit.ly/2syEREK)

**Sponsor(s):** Zero to Three and OSSE

**Audience:** Trainers, directors, supervisors, administrators, technical assistants, college instructors and professors, consultants and mentor teachers

**Core Knowledge Area:** Curriculum

Aug.

11

**Community Emergency Response Team (CERT) Training\*****Units/Clock Hours:**

6 Professional Learning Units

**CCDBG Topic:** Emergency preparedness and response planning for emergencies**Description:** This course teaches basic disaster response skills, fire safety, light search and rescue, CERT team organization, disaster psychology, terrorism awareness, and disaster medical operations.**Date:** Friday, Aug. 11, 2017**Time:** 9 a.m. - 4 p.m.**Location:** Frank D. Reeves Center, 2000 14th St. NW, Suite 101, Washington, DC 20009**Register by Web:** [bit.ly/2szxKvb](http://bit.ly/2szxKvb)**Sponsor(s):** Serve DC and OSSE**Audience:** All caregivers, teachers, assistant teachers and directors**Core Knowledge Area:** Health, Safety and Nutrition

Aug.

12

**Director's Corner: Successful Business Planning – Moving Forward Together****Units/Clock Hours:**

1 Professional Learning Unit

**Description:** During this session participants will discuss three phases of succession planning — assessment, evaluation, and development. The participants will assess their business achievements, identify the challenges they expect within the next one to five years, define critical positions within their organizations, and the competencies and skills that are critical for success.**Date:** Saturday, Aug. 12, 2017**Time:** 9:30 – 10:30 a.m.**Location:** DC Child Care Connections, 209 Upshur St. NW, Third Floor, Washington, DC 20011**Register by Web:** [bit.ly/2tEYBFB](http://bit.ly/2tEYBFB)**Sponsor(s):** Kids Comprehensive Services**Audience:** Directors, owners, and administrators**Core Knowledge Area:** Program Management: Operation and Evaluation

Aug.

12

**Marketing Strategies for Your Early Childhood Program (Part 1) NEW!****Units/Clock Hours:**

2 Professional Learning Units

**Description:** This workshop will provide participants the opportunity to explore the development of a Strategic Marketing Plan for their early childhood business. Through information and conversations about the components of these documents, the participants will have the opportunity to begin to develop a draft marketing plan, receive feedback and reflect on this information to strengthen the marketing plan.**Date:** Saturday, Aug. 12, 2017**Time:** 11 a.m. – 1 p.m.**Location:** DC Child Care Connections, 209 Upshur St. NW, Third Floor, Washington, DC 20011**Register by Web:** [bit.ly/2tCyS11](http://bit.ly/2tCyS11)**Sponsor(s):** Kids Comprehensive Services**Audience:** Directors, owners, and administrators**Core Knowledge Area:** Program Management: Operation and Evaluation

Aug.

14

**Breathing Easy: Asthma Training for Caregivers of Young Children\*****Units/Clock Hours:**

2 Professional Learning Units

**Description:** This training will provide early childhood staff with background to understand early childhood wheezing and asthma/respiratory problems. The participants will learn how to manage children with asthma symptoms and how to modify the environment to prevent respiratory problems.**Date:** Monday Aug. 14, 2017**Time:** 10 a.m. - 12 p.m.**Location:** OSSE, 810 First St. NE, Ninth Floor, Room 9014, Washington, DC 20002**Register by Web:** [bit.ly/2sFJsQe](http://bit.ly/2sFJsQe)**Sponsor(s):** Children's National Medical Health Center and OSSE**Audience:** All infant, toddler and preschool teachers, assistant teachers and directors**Core Knowledge Area:** Health, Safety and Nutrition



Aug.

15

**Pre-K CLASS Instructional Support  
Community of Practice (CoP) - Session 1:  
Concept Development NEW!****Units/Clock Hours:**

3 Professional Learning Units

**Description:** During this three-session CoP, participants will learn each dimension within the Instructional support domain, and apply best practices to support effective teacher-child interactions. Participants will learn the meaning of concept development, how to teach children to apply concepts learned to the real world, and problem-solve. **Participants must register for, and attend, all three CoP sessions.**

**Date:** Tuesday, Aug. 15, 2017

**Time:** 4 – 7 p.m.

**Location:** OSSE, 810 First St. NE, Third Floor, Grand Hall, Side B, Washington, DC 20002

**Register by Web:** [bit.ly/2tJjU9Q](http://bit.ly/2tJjU9Q)

**Sponsor(s):** Bradley & Associates, LLC and OSSE

**Audience:** Preschool teachers, assistant teachers, directors

**Core Knowledge Area:** Observing, Documenting and Assessing to Support Young Children and Families; Child Growth and Development

Aug.

16

**Preventing and Responding  
to Food Allergies\*****Units/Clock Hours:**

3 Professional Learning Units

**CCDBG Topic:** Prevention/response to emergencies due to food and allergic reactions

**Description:** This session will discuss the preparation and handling of food for children of all ages, including the consumption of formula, human milk, and solid foods. Participants will also learn how to recognize and respond to food allergies and how to create and follow individual care plans for children with food allergies.

**Date:** Wednesday, Aug. 16, 2017

**Time:** 10 a.m. - 1 p.m.

**Location:** DC Child Care Connections, 209 Upshur St. NW, Third Floor, Washington, DC 20011

**Register by Web:** [bit.ly/2szsuaW](http://bit.ly/2szsuaW)

**Sponsor(s):** Children's National Health System and OSSE

**Audience:** All infant, toddler and preschool teachers, assistant teachers and directors

**Core Knowledge Area:** Health, Safety and Nutrition

Aug.

15  
-  
16**Coaching Teachers to Fidelity of  
Implementation of The Creative  
Curriculum® (Two Day Course)****Units/Clock Hours:**

12 Professional Learning Units

**Description:** Administrators and staff who provide direct classroom support to teachers will learn how to use 'Coaching to Fidelity' and the 'Fidelity Tool for Administrators' to support teachers at all levels in their implementation of The Creative Curriculum® and/or GOLD®.

**Date:** Tuesday, Aug. 15, 2017 and Wednesday, Aug. 16, 2017

**Time:** 9 a.m. - 4 p.m.

**Location:** OSSE, 810 First St. NE, Eighth floor, 806 A & B, Washington, DC 20002

**Register by Web:** [bit.ly/2t9Szfi](http://bit.ly/2t9Szfi)

**Sponsor(s):** Teaching Strategies, Kids Comprehensive Services, LLC and OSSE

**Audience:** Directors, administrators, instructional coaches

**Core Knowledge Area:** Curriculum

Aug.

16

**Bike and Helmet Safety\* NEW!****Units/Clock Hours:**

1 Professional Learning Units

**CCDBG Topic:** Building and physical premises safety

**Description:** Knowing how to ensure proper use of helmets in early learning programs can help protect children from serious brain and head injury. During this session, participants will learn how to prevent avoidable injuries at school and at play, the safest places to walk and ride a bike, and the proper way to fit helmets.

**Date:** Wednesday, Aug. 16, 2017

**Time:** 2 - 3 p.m.

**Location:** DC Child Care Connections, 209 Upshur St. NW, Third Floor, Washington, DC 20011

**Register by Web:** [bit.ly/2tiZTnF](http://bit.ly/2tiZTnF)

**Sponsor(s):** Safe Kids DC Children's National Health System and OSSE

**Audience:** Teachers, assistant teachers, care givers, volunteers, substitutes, directors, parents

**Core Knowledge Area:** Health, Safety and Nutrition

Aug.

16

**Marketing Your Early Childhood Program (Part 2) NEW!****Units/Clock Hours:**

2 Professional Learning Units

**Description:** Participants will assess the quality of their early childhood program and identify the qualities that make their program unique. Based on this information, participants will create a marketing plan to raise awareness about their program's mission and the type of care and education they provide to the children enrolled in their program.

**Date:** Wednesday, Aug. 16, 2017

**Time:** 3 - 5 p.m.

**Location:** DC Child Care Connections, 209 Upshur St. NW, Third Floor, Washington, DC 20011

**Register by Web:** [bit.ly/2tj0ndc](http://bit.ly/2tj0ndc)

**Sponsor(s):** Kids Comprehensive Services and OSSE

**Audience:** Teachers, assistant teachers, care givers, volunteers, substitutes, directors, parents

**Core Knowledge Area:** Health, Safety and Nutrition

Aug.

21

**Period of Purple Crying\* NEW!****Units/Clock Hours:**

1 Professional Learning Units

**CCDBG Topic:** Prevention of shaken baby syndrome, abusive head trauma and child maltreatment

**Description:** This training will introduce the Shaken Baby Syndrome/Abusive Head Trauma and infant abuse prevention. This session will include discussion about common injuries, coping mechanisms, and a simulation of injuries that could result when a baby is shaken.

**Date:** Monday, Aug. 21, 2017

**Time:** 11 a.m. - 12 p.m.

**Location:** Children's National Medical Center, 111 Michigan Ave. NW, West Wing, Floor 3.5, Classroom D, Washington, DC 20010

**Register by Web:** [bit.ly/2sjytMX](http://bit.ly/2sjytMX)

**Sponsor(s):** Children's National Health System and OSSE

**Audience:** Teachers, assistant teachers, child care providers, substitutes, directors, parents, nurses, physicians, social workers, family support staff

**Core Knowledge Area:** Child Growth and Development; Health, Safety and Nutrition

Aug.

17

**WETA Kids Ready To Learn****Units/Clock Hours:**

1.5 Professional Learning Units

**Description:** This high impact session will prepare early childhood educators to nurture a child's natural curiosity and love of learning. Participants will learn to use the appeal and learning goals of PBS KIDS programs, such as Sesame Street and Clifford, to enhance literacy skills and prepare young children for school success. The participants will be introduced to 2-5 new children's books, and will receive one of the featured books to add to their classroom library.

**Date:** Thursday, Aug. 17, 2017

**Time:** 1 - 2:30 p.m.

**Location:** OSSE, 810 First St. NE, Fourth Floor, Room 4002, Washington, DC 20002

**Register by Web:** [bit.ly/2sFz8HZ](http://bit.ly/2sFz8HZ)

**Sponsor(s):** WETA and OSSE

**Audience:** Childcare providers, teachers, after school staff

**Core Knowledge Area:** Curriculum

Aug.

22

**Adult/Pediatric First Aid and CPR\*****Units/Clock Hours:**

7 Professional Learning Units

**CCDBG Topic:** Pediatric first-aid and CPR

**Description:** With an emphasis on hands-on-learning, the First Aid/CPR/AED courses give participants the skills to save a life. Participants will also learn how diseases are transmitted and will discover preventative measures for limiting the spread of disease in child care facilities.

**Date:** Tuesday, Aug. 22, 2017

**Time:** 9 a.m. - 5 p.m.

**Location:** OSSE, 810 First St. NE, Eighth Floor, 806 A&B, Washington, DC 20002

**Register by Web:** [bit.ly/2tG05il](http://bit.ly/2tG05il)

**Sponsor(s):** The Coles Group and OSSE

**Audience:** All staff members involved in providing direct care to children (teachers, assistant teachers, care givers, volunteers, substitutes, directors, etc.)

**Core Knowledge Area:** Health, Safety and Nutrition

Aug.

22

**Infant Safe Sleep Practices\*****Units/Clock Hours:**

2 Professional Learning Units

**CCDBG Topic:** Prevention of sudden infant death syndrome (SIDS) and use of safe sleep

**Description:** Participants in this course will identify behaviors that increase the risk of SIDS and sleep related infant deaths, learn ways to reduce the risk of SIDS in child care settings, and learn how to communicate with parents and other caregivers about safe sleep practices. This course reflects the American Academy of Pediatrics' revised recommendations for a safe sleep environment.

**Date:** Tuesday, Aug. 22, 2017

**Time:** 10 a.m. - 12 p.m.

**Location:** Department of Health, 899 North Capitol St. NE, 3rd Floor, Washington, DC 20002

**Register by Web:** [bit.ly/2sG8IG1](http://bit.ly/2sG8IG1)

**Sponsor(s):** DC Department of Health, Community Health Administration and OSSE

**Audience:** Teachers, assistant teachers, care givers, volunteers, substitutes, directors

**Core Knowledge Area:** Health, Safety, and Nutrition

Aug.

22

**Pre-K Classroom Assessment Scoring System (CLASS) Instructional Support Community of Practice (CoP) - Session 2: Quality of Feedback NEW!**

**Units/Clock Hours:**

3 Professional Learning Units

**CCDBG Topic:** Child development

**Description:** During the second session, participants will learn how to stimulate children's thinking and learning. Participants will learn how to provide quality feedback by asking follow-up questions and providing information in response to children's actions or comments. **Participants must register and attend all three CoP sessions.**

**Date:** Tuesday, Aug. 22, 2017

**Time:** 4 - 7 p.m.

**Location:** OSSE, 810 First St. NE, Third Floor, Grand Hall, Side B, Washington, DC 20002

**Register by Web:** [bit.ly/2taOSWJ](http://bit.ly/2taOSWJ)

**Sponsor(s):** Bradley & Associates, LLC and OSSE

**Audience:** Preschool teachers, assistant teachers, directors

**Core Knowledge Area:** Observing, Documenting and Assessing to Support Young Children and Families; Child Growth and Development

Aug.

22

**Children and Fires, Fire Extinguisher Training and Storage of Hazardous Materials\***

**Units/Clock Hours:**

3 Professional Learning Units

**CCDBG Topic:** Handling and storage of hazardous materials and the disposal of bio contaminants

**Description:** During this hands-on session participants will learn how to properly use and store toxic substances in child care settings. Participants will also learn the parts and function of a fire extinguisher and basic characteristics of children who show interest in fire and how to refer a child to the juvenile fire-setter program.

**Date:** Tuesday, Aug. 22, 2017

**Time:** 1 - 4 p.m.

**Location:** Fire & EMS Department, 1100 4th St. SW, Suite E-700, Washington, DC 20024

Register by email: [aleazor.taylor@dc.gov](mailto:aleazor.taylor@dc.gov)

**Sponsor(s):** DC Fire & EMS Department and OSSE

**Audience:** Teachers, administrators, program support staff

**Core Knowledge Area:** Health, Safety and Nutrition

Aug.

23

**How to Prevent and Control Infectious Diseases**

**Units/Clock Hours:**

2.5 Professional Learning Units

**CCDBG Topic:** Prevention and control of infectious diseases (Including immunizations)

**Description:** This session will provide an overview on how to prevent and control infectious diseases, including information on immunizations and influenza.

**Date:** Wednesday, Aug. 23, 2017

**Time:** 9 - 11:30 a.m.

**Location:** DC Child Care Connections, 209 Upshur St. NW, Third Floor, Washington, DC 20011

**Register by Web:** [bit.ly/2sAnAur](http://bit.ly/2sAnAur)

**Sponsor(s):** Children's National Health Systems and OSSE

**Audience:** All infants, toddler and preschool teachers, assistant teachers and directors

**Core Knowledge Area:** Health, Safety and Nutrition



Aug.

23

**Toddler Classroom Assessment Scoring System (CLASS): Overview of Engaged Support for Learning (with Spanish translation) NEW!****Units/Clock Hours:**

3 Professional Learning Units

**CCDBG Topic:** Child development**Description:** Participants will learn about the three dimensions of the engaged support for learning - facilitation of learning and development, quality of feedback, and language modeling.**Date:** Wednesday, Aug. 23, 2017**Time:** 1 – 4 p.m.**Location:** OSSE, 810 First St. NE, Eighth Floor, Room 806 A & B, Washington, DC 20002**Register by Web:** [bit.ly/2tDqYod](http://bit.ly/2tDqYod)**Sponsor(s):** Bradley & Associates, LLC and OSSE**Audience:** Toddler teachers, assistant teachers and directors**Core Knowledge Area:** Observing, assessing and documenting; Child Growth and Development

Aug.

25

**Food Allergy Prevention and Response\*****Units/Clock Hours:**

2 Professional Learning Units

**CCDBG Topic:** Prevention and response to emergencies due to food and other allergic reactions**Description:** This training will explore the food allergy procedures that should be in place when caring for children in early care and preschool settings according to research-based, Department of Health, Centers for Disease Control and Prevention (CDC) guidelines, and the rights of children with food allergies. Participants will be able to define anaphylaxis, identify common food allergies and their signs and symptoms, outline treatment and management options, learn how to create and follow individual care plans for each child with a food allergy, create and implement a detailed treatment plan in the event of an allergic reaction, and apply and understand best practices for minimizing risks and exposure.**Date:** Friday, Aug. 25, 2017**Time:** 1 - 3 p.m.**Location:** OSSE, 810 First St. NE, Ninth Floor, Room 9014, Washington, DC 20002**Register by Web:** [bit.ly/2taREeD](http://bit.ly/2taREeD)**Sponsor(s):** OSSE Nutrition and Wellness**Audience:** All infant, toddler and preschool teachers, assistant teachers and directors**Core Knowledge Area:** Health, Safety and Nutrition

Aug.

24

**Building and Physical Premises Safety****Units/Clock Hours:**

2 Professional Learning Units

**CCDBG Topic:** Building and physical premises safety**Description:** In this training participants will explore ways to plan, practice and promote safety in their early learning environments. Participants will discuss keeping children safe, away from poison hazards, choking and suffocation. This training will review three essential components of keeping children safe: education, supervision and environment.**Date:** Thursday, Aug. 24, 2017**Time:** 10 a.m. - 12 p.m.**Location:** DC Child Care Connections, 209 Upshur St. NW, Third Floor, Washington, DC 20011**Register by Web:** [bit.ly/2taYrVZ](http://bit.ly/2taYrVZ)**Sponsor(s):** Kids Comprehensive Services and OSSE**Audience:** All infant, toddler and preschool teachers, assistant teachers and directors**Core Knowledge Area:** Health, Safety and Nutrition

Aug.

28

**Administration of Medication (AOM) Training\*****Units/Clock Hours:**

3 Professional Learning Units

**CCDBG Topic:** Administration of Medication**Description:** During this course, participants will discuss basic medication administration guidelines, how to properly handle and store medications, and proper documentation of the administration of medication.**Date:** Monday, Aug. 28, 2017**Time:** 9 a.m. – 12 p.m.**Location:** DC Child Care Connections, 209 Upshur St. NW, Third Floor, Washington, DC 20011**Register by Web:** [bit.ly/2sklfOI](http://bit.ly/2sklfOI)**Sponsor(s):** Children's National Health System and OSSE**Audience:** All infant, toddler and preschool teachers, assistant teachers and directors**Core Knowledge Area:** Health, Safety and Nutrition

Aug.

28

### Early Literacy Series Session 1: Closing the Achievement Gap – Building Vocabulary

#### Units/Clock Hours:

6 Professional Learning Units

**Description:** We often hear that teachers and educational leaders must do more to “close the achievement gap,” but HOW should this be accomplished? This session addresses the root causes of the disparity between children’s educational success. To close the achievement gap, we must recognize the power of word knowledge (vocabulary); it is the KEY to text comprehension and reading success. This session provides research-based strategies so teachers will be able to support the language and literacy needs of children.

**Date:** Monday, Aug. 28, 2017

**Time:** 9:00 AM – 3:00 PM

**Location:** OSSE, 810 First St. NE, Washington, DC 20002, Third Floor, Grand Hall Side B

**Register by Web:** [bit.ly/2u5Haht](http://bit.ly/2u5Haht)

**Sponsor(s):** Eisenhart & Associates, Educational Consulting and OSSE

**Audience:** Kindergarten – 3rdgrade teachers, instructional coaches, and literacy leaders

**Core Knowledge Area:** Curriculum

Aug.

28

### Stewards of Children: Child Sexual Abuse Prevention\*

#### Units/Clock Hours:

2 Professional Learning Units

**CCDBG Topic:** Recognition and reporting child abuse and neglect

**Description:** This training teaches participants how to prevent, recognize and react responsibly to child sexual abuse. The training includes discussion about critical issues in sexual abuse prevention and the relevance of these issues in our communities. Participants will leave with practical skills they can use daily, and knowledge of ways their program can implement policies to proactively reduce the risk of child sexual abuse.

**Date:** Monday, Aug. 28, 2017

**Time:** 10 a.m. - 12 p.m.

**Location:** Safe Shores, 29 O St. NW, Washington, DC 20001

**Register by Web:** [safeshores.org/stewards-of-children.html](http://safeshores.org/stewards-of-children.html) or email [stewards@safeshores.org](mailto:stewards@safeshores.org)

**Sponsor(s):** Safe Shores – The DC Children’s Advocacy Center and OSSE

**Audience:** Teachers, administrators, program support staff

**Core Knowledge Area:** Health, Safety, and Nutrition

Aug.

28

### Precautions in Transporting Children\*

#### Units/Clock Hours:

2 Professional Learning Units

**CCDBG Topic:** Appropriate precautions in transporting children (if applicable)

**Description:** This course provides basic knowledge of transportation regulations, and includes a demonstration on how to properly conduct a vehicle passenger check, the use of child safety restraints required by District law, proper loading, unloading, and monitoring of children. Participants will learn where to find vehicular first aid supplies, and how to conduct emergency procedures and response in the event of accidents or breakdowns.

**Date:** Monday, Aug. 28, 2017

**Time:** 10 a.m. - 12 p.m.

**Location:** OSSE, 810 First St. NE, Third Floor, Grand Hall Side A, Washington, DC 20002

**Register by Web:** [bit.ly/2tal2k4](http://bit.ly/2tal2k4)

**Sponsor(s):** DC Department of Transportation and OSSE

**Audience:** Any center staff who provide transportation of any kind (before and after school, field trips, etc.) to children

**Core Knowledge Area:** Health, Safety and Nutrition

Aug.

28

### Period of Purple Crying\* **NEW!**

#### Units/Clock Hours:

1 Professional Learning Units

**CCDBG Topic:** Prevention of shaken baby syndrome, abusive head trauma and child maltreatment

**Description:** This training will introduce the Shaken Baby Syndrome/Abusive Head Trauma and infant abuse prevention. This session will include discussion of common injuries, coping mechanisms and a simulation of injuries that could occur when a baby is shaken.

**Date:** Monday, Aug. 28, 2017

**Time:** 11 a.m. - 12 p.m.

**Location:** Children’s National Medical Center, 111 Michigan Ave. NW, West Wing P2, Dr. Bear’s Green Room, Washington, DC 20010

**Register by Web:** [bit.ly/2tDrthL](http://bit.ly/2tDrthL)

**Sponsor(s):** Children’s National Health System and OSSE

**Audience:** Teachers, assistant teachers, child care providers, substitutes, directors, parents, nurses, physicians, social workers, family support staff

**Core Knowledge Area:** Health, Safety and Nutrition

Aug.

29

### Early Literacy Series Session 2: Differentiation Makes a Difference: Using Flexible Grouping to Meet the Learning Needs of Early Readers

#### Units/Clock Hours:

4 Professional Learning Units

**Description:** Every year Kindergarten – 3rd grade teachers work diligently to meet the learning needs of a diverse classroom of children. The literacy skills within a typical classroom often span five years – from learning letters to reading chapter books. Differentiating instruction can be difficult and complex. This session, however, will provide support and guidance to help teachers establish and manage a differentiated classroom. The presenter will use video clips, planning guides, and other resources that will assist the teacher better understand the power and process of differentiating literacy instruction.

**Date:** Tuesday, Aug. 29, 2017

**Time:** 9 a.m. – 1 p.m.

**Location:** OSSE, 810 First St. NE, Third Floor, Grand Hall Side A, Washington, DC 20002

**Register by Web:** [bit.ly/2tGqmM3](http://bit.ly/2tGqmM3)

**Sponsor(s):** Eisenhart and Associates, Educational Consulting and OSSE

**Audience:** Kindergarten – 3rd grade teachers, instructional coaches, and literacy leaders

**Core Knowledge Area:** Curriculum

Aug.

30

### Early Literacy Series Session 3: The Pinnacle of Reading – Text Comprehension

#### Units/Clock Hours:

6 Professional Learning Units

**Description:** Comprehension is the “pinnacle” of reading! If a child masters decoding words and “reads” fluently, but does not comprehend text, there is no meaning to the words on the page and the child is not gaining knowledge. This session focuses on instructional strategies to build children’s comprehension skills.

**Date:** Wednesday, Aug. 30, 2017

**Time:** 9 a.m. – 3 p.m.

**Location:** OSSE, 810 First St. NE, Washington, DC 20002, Third Floor, Grand Hall Side A

**Register by Web:** [bit.ly/2sHUG7M](http://bit.ly/2sHUG7M)

**Sponsor(s):** Eisenhart and Associates, Educational Consulting and OSSE

**Audience:** Kindergarten – 3rd grade teachers, instructional coaches, and literacy leaders

**Core Knowledge Area:** Curriculum

Aug.

29

### Pre-K Classroom Assessment Scoring System (CLASS) Instructional Support Community of Practice (CoP) - Session 3: Language Modeling **NEW!**

#### Units/Clock Hours:

3 Professional Learning Units

**CCDBG Topic:** Child development

**Description:** In the last session of the instructional support CoP, participants will learn strategies on how to respond, communicate, and expose children to different uses and forms of language. Teachers will also learn how to explicitly introduce new vocabulary words. **Participants must register and attend all three CoP sessions.**

**Date:** Tuesday, Aug. 29, 2017

**Time:** 4 – 7 p.m.

**Location:** OSSE, 810 First St. NE, Third Floor, Grand Hall, Side B, Washington, DC 20002

**Register by Web:** [bit.ly/2uEsMKn](http://bit.ly/2uEsMKn)

**Sponsor(s):** Bradley & Associates, LLC and OSSE

**Audience:** Preschool teachers, assistant teachers, directors

**Core Knowledge Area:** Observing, assessing and documenting; Child Growth and Development

Aug.

31

### Data Basics: Using Data to Enhance Everyday Classroom Practices

#### Units/Clock Hours:

3 Professional Learning Units

**Description:** This training will provide early childhood professionals with best practices on how to use data for continuous quality improvement efforts. Participants will learn to use individual, classroom, or school-wide level data to improve child outcomes and plan for professional development.

**Date:** Thursday Aug. 31, 2017

**Time:** 2 – 5 p.m.

**Location:** OSSE, 810 First St. NE, Ninth Floor, Room 9014, Washington, DC 20002

**Register by Web:** [bit.ly/2uEimKu](http://bit.ly/2uEimKu)

**Sponsor(s):** Educare and OSSE

**Audience:** Teachers, assistant teachers and directors

**Core Knowledge Area:** Program Management: Operation and Evaluation



Aug.

31

**Period of Purple Crying\* NEW!****Units/Clock Hours:**

1 Professional Learning Units

**CCDBG Topic:** Prevention of shaken baby syndrome, abusive head trauma and child maltreatment

**Description:** This training will introduce the Shaken Baby Syndrome/Abusive Head Trauma and infant abuse prevention. This session will include discussion of common injuries, coping mechanisms and a simulation of injuries that could occur when a baby is shaken.

**Date:** Thursday, Aug. 31, 2017

**Time:** 6 - 7 p.m.

**Location:** Children's National Medical Center, 111 Michigan Ave. NW, Second Floor, Main Auditorium, Washington, DC 20010

**Register by Web:** [bit.ly/2sA6Rr3](http://bit.ly/2sA6Rr3)

**Sponsor(s):** Children's National Health System and OSSE

**Audience:** Child care providers, teachers, assistant teachers, educators, nurses, social workers

**Core Knowledge Area:** Health, Safety and Nutrition



# NOW AVAILABLE!



## Early Childhood Share DC

The one-stop resource for early childhood professionals in the District of Columbia

[www.ecsharedc.org](http://www.ecsharedc.org)

---

Early Childhood Share DC helps early learning providers save time, reduce costs, increase quality and share knowledge. The site features more than 1,200 classroom and administration resources, such as:

- Resources for business operations, insurance, family engagement, health, handbooks and more
- Curriculum ideas and classroom materials
- HR tools, templates, forms and policies
- Discounts at leading vendors and retailers
- Direct links to key forms and websites

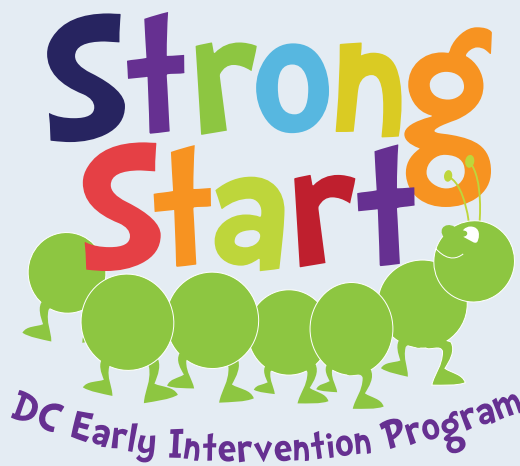
The site is available **FREE** to all licensed providers in the District.

---

## DON'T DELAY – REGISTER TODAY!



Early Childhood Share DC is sponsored by the Bainum Family Foundation in collaboration with the Office of the State Superintendent of Education (OSSE).



Open to children ages 6 mos. - 3 yrs. • Free to residents of DC • Pre-registration is required

Playgroups are available Monday - Thursday and on selected Saturdays throughout the year across seven different locations within the Washington, DC area.

## 2017 Strong Start Play Group Schedule

DAY	LOCATION	SESSION(S) (in months)
MONDAY	<b>TENLEY-FRIENDSHIP LIBRARY</b> 4450 Wisconsin Ave. NW – across from the Tenley Metro Station	12 – 24: 10 – 11 a.m. 24 – 36: 11 – 12 p.m.
	<b>COLUMBIA HEIGHTS</b> 1371 Harvard St. NW – on the corner of 14 <sup>th</sup> St. and Harvard St.	12 – 24: 10 – 11 a.m. 6 – 12: 11:30 a.m. – 12:15 p.m.
TUESDAY	<b>ANACOSTIA NEIGHBORHOOD LIBRARY</b> 1800 Good Hope Rd. SE	24 – 36: 10 – 11 a.m.
	<b>SOUTHWEST LIBRARY</b> 900 Wesley Pl. SW	12 – 24: 11 a.m. – 12 p.m. 24 – 36: 10 – 11 p.m.
	<b>COLUMBIA HEIGHTS</b> 1371 Harvard St. NW – on the corner of 14th St. and Harvard St.	12 – 24: 11:15 a.m. – 12:15 p.m. 24 – 36: 12:30 p.m. – 1:30 p.m. (Bilingual)
WEDNESDAY	<b>HILL CENTER AT THE OLD NAVAL HOSPITAL</b> 921 Pennsylvania Ave. SE	24 – 36: 9 – 10:15 a.m. 12 – 24: 10:30 – 11:30 a.m.
		6 – 12: 11:45 a.m. – 12:30 p.m.
THURSDAY	<b>COLUMBIA HEIGHTS</b> 1371 Harvard St. NW – on the corner of 14th St. and Harvard St.	24 – 36: 10 – 11:00 a.m. 12 – 24: 11:15 a.m. – 12:15 p.m.
FRIDAY	<b>COLUMBIA HEIGHTS</b> (2x/month Spanish) (FUTURE) 1371 Harvard St. NW – on the corner of 14th St. and Harvard St	TBD
SATURDAY (**2x/month Spanish or 1x/month Developmental Inclusive)	<b>MARTHA'S TABLE</b> (2x/month) 2114 14th St. NW.	3+ & 24 – 36: 9 – 10:15 a.m.
		12 – 24: 10:30 – 11:30 a.m.

For more information, contact: [Christopher.Chapman@dc.gov](mailto:Christopher.Chapman@dc.gov) | (202) 741-0792 (office) | (202) 213-7002 (mobile)



## SEPTEMBER AT-A-GLANCE

Sept. 5	Supporting Dual Language Learners <b>New!</b>
Sept. 6	Pre-K Classroom Assessment Scoring System (CLASS) Instructional Support Community of Practice (CoP) Session 1: Concept Development <b>New!</b>
Sept. 6	Toddler Classroom Assessment Scoring System (CLASS): Overview of Engaged Support for Learning <b>New!</b>
Sept. 7	Starting Strong: Nutrition for Infants and Toddlers*
Sept. 7	Trauma and Resilience*
Sept. 8	Community Emergency Response Team (CERT) Training*
Sept. 8	Nutrition for Early Learners*
Sept. 8	Implementing The Teaching Strategies GOLD® (Day 1)
Sept. 9	Implementing The Teaching Strategies GOLD® (Day 2)
Sept. 9	Introduction to The Creative Curriculum® for Family Child Care <b>New!</b>
Sept. 9	Director's Corner: The Challenge of Attracting and Recruiting Staff <b>New!</b>
Sept. 9	Attracting, Developing and Retaining Staff
Sept. 11	Emergency Preparedness*
Sept. 12	Early Literacy Series Session 4: The Reading – Writing Connection: Establishing Writing Workshop in K-3 Classrooms
Sept. 12	Infant Classroom Assessment Scoring System (CLASS): Overview of Responsive Caregiving (with Spanish translation) <b>New!</b>
Sept. 12	Preventing and Responding to Food Allergies*
Sept. 12	Period of Purple Crying* <b>New!</b>
Sept. 13	Pre-K Classroom Assessment Scoring System (CLASS) Instructional Support: Community of Practice (CoP) - Session 2: Quality of Feedback <b>New!</b>
Sept. 13	Bike and Helmet Safety* <b>New!</b>
Sept. 13	Stewards of Children: Child Sexual Abuse Prevention*
Sept. 14	Pre-K Classroom Assessment Scoring System (CLASS): Advanced Session: Instructional Support (with Spanish translation) <b>New!</b>
Sept. 14	WETA Kids Ready to Learn
Sept. 14	Data Basic: Using Data to Enhance Everyday Classroom Practices
Sept. 18	Precautions in Transporting Children*
Sept. 19	Adult/Pediatric First Aid and CPR* (En Español)
Sept. 19	Children and Fires, Fire Extinguisher Training and Storage of Hazardous Materials*
Sept. 20	Observation and Introductory GOLD Lab Session
Sept. 20	Pre-K Classroom Assessment Scoring System (CLASS) Instructional Support Community of Practice - Session 3: Language Modeling <b>New!</b>
Sept. 20	Preventing and Responding to Food Allergies*
Sept. 21	Interpreting and Using GOLD Data
Sept. 26	Adult/Pediatric First Aid and CPR*
Sept. 26	Infant Safe Sleep Practices*
Sept. 26	Stewards of Children: Child Sexual Abuse Prevention*
Sept. 27	How to Prevent and Control Infectious Diseases
Sept. 27	Period of Purple Crying* <b>New!</b>
Sept. 27	Pre-K Classroom Assessment Scoring System (CLASS) Advanced Session: Instructional Support
Sept. 28	Administration of Medication

\* Denotes a required health and safety course

## SEPTEMBER OFFERINGS

Sept.

5

### Supporting Dual Language Learners

#### Units/Clock Hours:

6 Professional Learning Units

**Description:** During this session, teachers will learn how to use the Creative Curriculum® for preschool and GOLD® to address the needs of children who are English language learners. Teachers will explore strategies for supporting children's acquisition of English while supporting their home language development, assessing children who speak a home language other than English, and building effective and respectful partnerships with families.

**Date:** Tuesday, Sept. 5, 2017

**Time:** 9 a.m. – 4 p.m.

**Location:** OSSE, 810 First St. NE, Eighth Floor 806 A&B, Washington, DC 20002

**Register by Web:** [bit.ly/2sK6fPz](http://bit.ly/2sK6fPz)

**Sponsor(s):** OSSE and Teaching Strategies

**Audience:** Infant, toddler, and preschool teachers, assistant teachers and directors

**Core Knowledge Area:** Curriculum; Diversity: Family, Language, Culture, and Society

Sept.

6

### Pre-K Classroom Assessment Scoring System (CLASS) Instructional Support Community of Practice (CoP) Session 1: Concept Development **NEW!**

#### Units/Clock Hours:

3 Professional Learning Units

**CCDBG Topic:** Child development

**Description:** During this three-session CoP, participants will learn each dimension within the instructional support domain, and apply best practices to support effective teacher-child interactions. Participants will learn the meaning of concept development, how to teach children to apply concepts learned in the real world, and problem-solve. **Participants must register for, and attend, all 3 CoP sessions.**

**Date:** Wednesday, Sept. 6, 2017

**Time:** 1 – 4 p.m.

**Location:** OSSE, 810 First St. NE, Eighth Floor, 806 A & B, Washington, DC 20002

**Register by Web:** [bit.ly/2uOlVYg](http://bit.ly/2uOlVYg)

**Sponsor(s):** Bradley & Associates, LLC and OSSE

**Audience:** Preschool teachers, assistant teachers, directors

**Core Knowledge Area:** Observing, Documenting and Assessing to Support Young Children and Families; Child Growth and Development

Sept.

6

### Toddler Classroom Assessment Scoring System (CLASS): Overview of Engaged Support for Learning **NEW!**

#### Units/Clock Hours:

3 Professional Learning Units

**CCDBG Topic:** Child development

**Description:** Participants will learn about the three dimensions of the engaged support for learning - facilitation of learning and development, quality of feedback, and language modeling.

**Date:** Wednesday, Sept. 6, 2017

**Time:** 4 – 7 p.m.

**Location:** OSSE, 810 First St. NE, Eighth Floor, 806 A & B, Washington, DC 20002

**Register by Web:** [bit.ly/2tIAPxT](http://bit.ly/2tIAPxT)

**Sponsor(s):** Bradley & Associates, LLC and OSSE

**Audience:** Toddler teachers, assistant teachers, directors

**Core Knowledge Area:** Observing, Documenting and Assessing to Support Young Children and Families; Child Growth and Development

Sept.

7

### Starting Strong: Nutrition for Infants and Toddlers\*

#### Units/Clock Hours:

2.5 Professional Learning Units

**CCDBG Topic:** Child development

**Description:** This session will help participants better understand developmental readiness for introducing solid foods to infants and the process of transitioning to table foods. Participants will also be provided with ways to promote good nutrition that will prepare children for a lifetime of growing and learning. This two and a half hour training will also cover the Child and Adult Care Food Program (CACFP) infant meal pattern and feeding guidelines, which all licensed providers are required to follow.

**Date:** Thursday, Sept. 7, 2017

**Time:** 9:30 a.m. – 12 p.m.

**Location:** OSSE, 810 First St. NE, Fifth Floor, Room 5014, Washington, DC 20002

**Register by Web:** [bit.ly/2tMFrhM](http://bit.ly/2tMFrhM)

**Sponsor(s):** OSSE – Wellness and Nutrition

**Audience:** All caregivers, teachers, assistant teachers and directors

**Core Knowledge Area:** Health, Safety and Nutrition

Sept.

7

**Trauma and Resilience\*****Units/Clock Hours:**

3 Professional Learning Units

**CCDBG Topic:** Child development

**Description:** In this workshop participants learn how trauma can affect a child's developing brain. During the training the participants will learn how to identify signs of trauma and how to foster resilience in children, so they can develop into emotionally strong adults. How to access local early childhood mental health resources will be discussed.

**Date:** Thursday, Sept. 7, 2017**Time:** 1 – 4 p.m.**Location:** OSSE, 810 First St. NE, Fifth Floor, Room 5014, Washington, DC 20002**Register by Web:** [bit.ly/2tkTGck](http://bit.ly/2tkTGck)**Sponsor(s):** DCPS Early Stages and OSSE

**Audience:** Teachers, assistant teachers, Early Childhood Mental Health consultants, Family Social Workers, Family Support Workers and Early Intervention Service Coordinators

**Core Knowledge Area:** Social Emotional Development and Mental Health; Child Growth and Development

Sept.

8  
-  
9**Implementing The Teaching Strategies GOLD® (Two Day Session) NEW!****Units/Clock Hours:**

12 Professional Learning Units

**CCDBG Topic:** Child development

**Description:** Teachers will learn the basic skills they need to begin implementing GOLD® in their classrooms. They will

examine the progressions of development and learning and the assessment process, practice evaluating a child's portfolio, create useful assessment information by linking curricular objectives to documentation, and develop conference forms to communicate with families. **Participants must register for, and attend, both sessions.**

**Date:** Friday, Sept. 8, 2017 and Saturday, Sept. 9, 2017**Time:** 9 a.m. - 4 p.m.**Location (Sept. 8):** OSSE, 810 First St. NE, Eighth Floor, 806 A & B, Washington, DC 20002**Location (Sept. 9):** OSSE, 810 First St. NE, Third Floor, Grand Hall A & B, Washington, DC 20002**Register by Web:** [bit.ly/2tVxXDH](http://bit.ly/2tVxXDH)**Sponsor(s):** OSSE and Teaching Strategies

**Audience:** All infant, toddler and preschool teachers, assistant teachers and directors

**Core Knowledge Area:** Curriculum; Child Growth and Development

Sept.

8

**Community Emergency Response Team (CERT) Training\*****Units/Clock Hours:**

6 Professional Learning Units

**CCDBG Topic:** Emergency preparedness and response planning for emergencies

**Description:** This course teaches basic disaster response skills, fire safety, light search and rescue, CERT team organization, disaster psychology, terrorism awareness, and disaster medical operations.

**Date:** Friday, Sept. 8, 2017**Time:** 9 a.m. - 4 p.m.**Location:** Frank D. Reeves Center of Municipal Affairs, 2000 14th St. NW, Washington, DC 20009**Register by Web:** [bit.ly/2tjYHF](http://bit.ly/2tjYHF)**Sponsor(s):** Serve DC and OSSE

**Audience:** All caregivers, teachers, assistant teachers and directors

**Core Knowledge Area:** Health, Safety and Nutrition

Sept.

8

**Nutrition for Early Learners\*****Units/Clock Hours:**

2.5 Professional Learning Units

**CCDBG Topic:** Child development

**Description:** Good nutrition is a key for supporting healthy development and preparing children for school. This training session will teach you the basics of good nutrition for toddlers and preschoolers as well as planning and preparing nutritious meals with a focus on meeting the Child and Adult Care Food Program (CACFP) meal pattern requirements, which all licensed providers are required to follow. This training will also cover best practices for creating positive meal times and implementing family-style meal service.

**Date:** Friday, Sept. 8, 2017**Time:** 9:30 a.m. - 12 p.m.**Location:** OSSE, 810 First St. NE, Fourth Floor, Room 4002, Washington, DC 20002**Register by Web:** [bit.ly/2tuudeQ](http://bit.ly/2tuudeQ)**Sponsor(s):** OSSE – Wellness and Nutrition

**Audience:** All caregivers, teachers, assistant teachers and directors

**Core Knowledge Area:** Health, Safety and Nutrition



Sept.

9

**Introduction to The Creative Curriculum® for Family Child Care NEW!****Units/Clock Hours:**

6 Professional Learning Units

**Description:** Teachers and caregivers will discover ways to successfully implement The Creative Curriculum® for Family Child Care; a comprehensive, research-based, developmentally-appropriate curriculum that addresses the specific needs of the family child care community.

**Date:** Saturday, Sept. 9, 2017

**Time:** 9 a.m. – 4 p.m.

**Location:** Anacostia Neighborhood Library, 1800 Good Hope Rd. SE, Washington, DC 20020

**Register by Web:** [bit.ly/2tVGOuG](http://bit.ly/2tVGOuG)

**Sponsor(s):** OSSE and Teaching Strategies

**Audience:** All infants, toddler and preschool teachers, assistant teachers and directors

**Core Knowledge Area:** Curriculum

Sept.

9

**Director's Corner: The Challenge of Attracting and Recruiting Staff NEW!****Units/Clock Hours:**

1 Professional Learning Unit

**Description:** Successful employment practices are a critical component of administering high-quality early education programs. This session focuses on the framework for effective recruitment and selection, by identifying the criteria for finding the right person for the job and demonstrating how to screen and interview candidates.

**Date:** Saturday, Sept. 9, 2017

**Time:** 9:30 – 10:30 a.m.

**Location:** DC Child Care Connections, 209 Upshur St. NW, Third Floor, Washington, DC 20011

**Register by Web:** [bit.ly/2uORvfb](http://bit.ly/2uORvfb)

**Sponsor(s):** Kids Comprehensive Services and OSSE

**Audience:** Directors, owners, and administrators

**Core Knowledge Area:** Program Management: Operation and Evaluation

Sept.

9

**Attracting, Developing and Retaining Staff NEW!****Units/Clock Hours:**

2 Professional Learning Units

**Description:** Using the participant's experience in early childhood settings, the participants will work in small groups to create a plan that includes effective strategies to attract, develop, and retain staff.

**Date:** Saturday, Sept. 9, 2017

**Time:** 11 a.m. – 1 p.m.

**Location:** DC Child Care Connections, 209 Upshur St. NW, Third Floor, Washington, DC 20011

**Register by Web:** [bit.ly/2tuFg7T](http://bit.ly/2tuFg7T)

**Sponsor(s):** Kids Comprehensive Services and OSSE

**Audience:** Directors, owners, and administrators

**Core Knowledge Area:** Program Management: Operation and Evaluation

Sept.

11

**Emergency Preparedness\*****Units/Clock Hours:**

2 Professional Learning Units

**CCDBG Topic:** Emergency preparedness and response planning

**Description:** Being prepared for emergencies can make a big difference as to whether or not the children in your care and the staff in your program remain safe. In this course, participants will learn about the necessary steps a program should take to ensure preparedness in the event of an emergency, as well as effective strategies to communicate the emergency plan to children, parents, and staff.

**Date:** Monday, Sept. 11, 2017

**Time:** 9 - 11 a.m.

**Location:** DC Child Care Connections, 209 Upshur St. NW, Third Floor, Washington, DC 20011

**Register by Web:** [bit.ly/2sun5y0](http://bit.ly/2sun5y0)

**Sponsor(s):** Emergency Medical Services for Children and OSSE

**Audience:** All caregivers, teachers, assistant teachers and directors

**Core Knowledge Area:** Health, Safety and Nutrition

Sept.

12

### Early Literacy Series Session 4: The Reading – Writing Connection: Establishing Writing Workshop in K-3 Classrooms

#### Units/Clock Hours:

6 Professional Learning Units

**Description:** This interactive session focuses on the connection between reading and writing and how a 'Writing Workshop' model can support and strengthen children's literacy skills. The presenter will use video tapes and planning guides to provide participants with an understanding of how to establish and manage 'Writing Workshop' in their classrooms.

**Date:** Tuesday, Sept. 12, 2017

**Time:** 9 a.m. – 3 p.m.

**Location:** OSSE, 810 First St. NE, Third Floor, Grand Hall Side B, Washington, DC 20002

**Register by Web:** [bit.ly/2uaLqNR](http://bit.ly/2uaLqNR)

**Sponsor(s):** Eisenhart and Associates, Educational Consulting and OSSE

**Audience:** Kindergarten – 3rd grade teachers, instructional coaches, and literacy leaders

**Core Knowledge Area:** Curriculum

Sept.

12

### Preventing and Responding to Food Allergies\*

#### Units/Clock Hours:

3 Professional Learning Units

**CCDBG Topic:** Prevention/response to emergencies due to food and allergic reactions

**Description:** This session will discuss the preparation and handling of food for children of all ages, including the consumption of formula, human milk, and solid foods. Participants will also learn how to recognize and respond to food allergies and how to create and follow individual care plans for children with food allergies.

**Date:** Tuesday, Sept. 12, 2017

**Time:** 10 a.m. – 1 p.m.

**Location:** DC Child Care Connections, 209 Upshur St. NW, Third Floor, Washington, DC 20011

**Register by Web:** [bit.ly/2uuHLXQ](http://bit.ly/2uuHLXQ)

**Sponsor(s):** Children's National Health System and OSSE

**Audience:** All infant, toddler and preschool teachers, assistant teachers and directors

**Core Knowledge Area:** Health, Safety and Nutrition

Sept.

12

### Infant CLASS: Overview of Responsive Caregiving (with Spanish translation) **NEW!**

#### Units/Clock Hours:

3 Professional Learning Units

**CCDBG Topic:** Child development

**Description:** Participants will learn the importance of teacher-infant interactions and the value of forming attachments and bonding with infants. Participants will learn skills that will enhance their awareness of and responsiveness to infants' cues.

**Date:** Tuesday, Sept. 12, 2017

**Time:** 9:30 a.m. – 12:30 p.m.

**Location:** OSSE, 810 First St. NE, Third Floor, Grand Hall Side A, Washington, DC 20002

**Register by Web:** [bit.ly/2tuVxtl](http://bit.ly/2tuVxtl)

**Sponsor(s):** Bradley & Associates, LLC and OSSE

**Audience:** Infant teachers, assistant teachers, directors

**Core Knowledge Area:** Child Growth and Development; Social Emotional Development and Mental Health

Sept.

12

### Period of Purple Crying\* **NEW!**

#### Units/Clock Hours:

1 Professional Learning Units

**CCDBG Topic:** Shaken Baby Syndrome/Abusive Head Trauma

**Description:** This training will introduce the Shaken Baby Syndrome/Abusive Head Trauma and infant abuse prevention. This session will include discussion of common injuries, coping mechanisms and a simulation of injuries that could occur when a baby is shaken.

**Date:** Tuesday, Sept., 12, 2017

**Time:** 6 – 7 p.m.

**Location:** Children's National Medical Center, 111 Michigan Ave. NW, Second Floor, Main Auditorium, Washington, DC 20010

**Register by Web:** [bit.ly/2tWkeSC](http://bit.ly/2tWkeSC)

**Sponsor(s):** Children's National Health System and OSSE

**Audience:** All caregivers, teachers, assistant teachers and directors

**Core Knowledge Area:** Health, Safety and Nutrition; Child Growth and Development

Sept.

13

**Pre-K Classroom Assessment Scoring System (CLASS) Instructional Support Community of Practice (CoP) Session 2: Quality of Feedback NEW!**

**Units/Clock Hours:**

3 Professional Learning Units

**CCDBG Topic:** Child development

**Description:** During the second session, participants will learn how to stimulate children's thinking and learning. Participants will learn how to provide quality feedback by asking follow-up questions and providing information in response to children's actions or comments. **Participants must register and attend all three CoP sessions.**

**Date:** Wednesday, Sept. 13, 2017

**Time:** 1 – 4 p.m.

**Location:** OSSE, 810 First St. NE, Eighth Floor, 806 A & B, Washington, DC 20002

**Register by Web:** [bit.ly/2tR8WhW](http://bit.ly/2tR8WhW)

**Sponsor(s):** Bradley & Associates, LLC and OSSE

**Audience:** Preschool teachers, assistant teachers, directors

**Core Knowledge Area:** Observing, Documenting and Assessing to Support Young Children and Families; Child Growth and Development

Sept.

13

**Bike and Helmet Safety\* NEW!**

**Units/Clock Hours:**

1 Professional Learning Units

**CCDBG Topic:** Building and physical premises safety

**Description:** Knowing how to ensure proper use of helmets in early learning programs can help protect children from serious brain and head injury. During this session, participants will learn how to prevent avoidable injuries at school and at play, the safest places to walk and ride a bike, and the proper way to fit helmets.

**Date:** Wednesday, Sept. 13, 2017

**Time:** 4 - 5 p.m.

**Location:** DC Child Care Connections, 209 Upshur St. NW, Third Floor, Washington, DC 20002

**Register by Web:** [bit.ly/2tWjJZ2](http://bit.ly/2tWjJZ2)

**Sponsor(s):** Safe Kids DC, Children's National Health System and OSSE

**Audience:** Teachers, assistant teachers, care givers, volunteers, substitutes, directors, parents

**Core Knowledge Area:** Health, Safety and Nutrition

Sept.

13

**Stewards of Children: Child Sexual Abuse Prevention\***

**Units/Clock Hours:**

2 Professional Learning Units

**CCDBG Topic:** Recognition and reporting child abuse and neglect

**Description:** This training teaches participants how to prevent, recognize and react responsibly to child sexual abuse. The training includes discussion about critical issues in sexual abuse prevention and the relevance of these issues in our communities. Participants will leave with practical skills they can use daily, and knowledge of ways their program can implement policies to proactively reduce the risk of child sexual abuse.

**Date:** Wednesday, Sept. 13, 2017

**Time:** 5 - 7 p.m.

**Location:** Safe Shores, 429 O St. NW, Washington, DC 20001

**Register by Web:** [safeshores.org/stewards-of-children.html](http://safeshores.org/stewards-of-children.html) or email [stewards@safeshores.org](mailto:stewards@safeshores.org)

**Sponsor(s):** Safe Shores – The DC Children's Advocacy Center and OSSE

**Audience:** Teachers, administrators, program support staff

**Core Knowledge Area:** Health, Safety and Nutrition

Sept.

14

**Pre-K Classroom Assessment Scoring System (CLASS) Advanced Session: Instructional Support (with Spanish translation) NEW!**

**Units/Clock Hours:**

3 Professional Learning Units

**CCDBG Topic:** Child development

**Description:** This session will focus on how to use strengths-based strategies in order to understand the differences between general and content-specific instructional supports. Participants will discuss how interactions may look different based on the child's individualized needs and method of communicating.

**Date:** Tuesday, Sept. 14, 2017

**Time:** 1 - 4 p.m.

**Location:** OSSE, 810 First St. NE, Eighth Floor, 806 A & B, Washington, DC 20002

**Register by Web:** [bit.ly/2tIMsop](http://bit.ly/2tIMsop)

**Sponsor(s):** Bradley & Associates, LLC and OSSE

**Audience:** Preschool teachers, assistant teachers, directors

**Core Knowledge Area:** Observing, Documenting and Assessing to Support Young Children and Families; Child Growth and Development



Sept.

14

**WETA Kids Ready To Learn****Units/Clock Hours:**

1.5 Professional Learning Units

**Description:** This high impact session will prepare early childhood educators to nurture a child's natural curiosity and love of learning. Participants will learn how to use the appeal and learning goals of PBS KIDS programs, such as Sesame Street and Clifford, to enhance literacy skills and prepare young children for school success. The participants will be introduced to 2-5 new children's books, and will receive one of the featured books to add to their classroom library.

**Date:** Thursday, Sept. 14, 2017

**Time:** 1 - 2:30 p.m.

**Location:** OSSE, 810 First St. NE, Fifth Floor, Room 5014, Washington, DC 20002

**Register by Web:** [bit.ly/2sKXzIK](http://bit.ly/2sKXzIK)

**Sponsor(s):** WETA and OSSE

**Audience:** Childcare providers, teachers, after-school Staff

**Core Knowledge Area:** Curriculum

Sept.

18

**Precautions in Transporting Children\*****Units/Clock Hours:**

2 Professional Learning Units

**CCDBG Topic:** Precautions in transporting children

**Description:** This course provides basic knowledge of transportation regulations, and includes a demonstration on how to properly conduct a vehicle passenger check, the use of child safety restraints required by District law, proper loading, unloading, and monitoring of children. Participants will learn where to find vehicular first aid supplies, and how to conduct emergency procedures and response in the event of accidents or breakdowns.

**Date:** Monday, Sept. 18, 2017

**Time:** 10 a.m. – 12 p.m.

**Location:** OSSE, 810 First St. NE, Eighth Floor, 806 A & B, Washington, DC 20002

**Register by Web:** [bit.ly/2tIUiyh](http://bit.ly/2tIUiyh)

**Sponsor(s):** DC Department of Transportation and OSSE

**Audience:** Any center staff who provide transportation of any kind (before and after school, field trips, etc.) to children

**Core Knowledge Area:** Health, Safety and Nutrition

Sept.

14

**Data Basic: Using Data to Enhance Everyday Classroom Practices****Units/Clock Hours:**

3 Professional Learning Units

**Description:** This training will provide early childhood professionals with practical instruction on how to use data for continuous quality improvement efforts. Participants will be introduced to ways that data can be used on an individual, classroom, or school-wide level to improve child outcomes and plan for professional development.

**Date:** Thursday, Sept. 14, 2017

**Time:** 2 – 5 p.m.

**Location:** OSSE, 810 First St. NE, Ninth Floor, 9014, Washington, DC 20002

**Register by Web:** [bit.ly/2uv38bl](http://bit.ly/2uv38bl)

**Sponsor(s):** Educare and OSSE

**Audience:** Teachers, assistant teachers and directors

**Core Knowledge Area:** Program Management: Operation and Evaluation

Sept.

19

**EN ESPANOL****Primeros auxilios para niños y adultos/ Resucitación cardiopulmonar (RCP) \*****Unidades/Horas reioj:**

7 unidades de aprendizaje profesional

**CCDBG tema:** Primeros auxilios pediátrico y reanimación cardiopulmonar (RCP)

**Descripción:** Con énfasis en las manos de aprendizaje, los cursos de primeros auxilios/RCP/DEA dan a los participantes los conocimientos necesarios para salvar una vida. Los participantes también aprenderán cómo las enfermedades se transmiten y descubrirán las medidas preventivas para limitar la propagación de la enfermedad en centros de cuidado infantil.

**Fecha:** Martes, 19 de Septiembre de 2017

**Hora:** 9 a.m. - 5 p.m.

**Lugar:** OSSE, 810 First St. NE, Eighth Floor, 806 A & B, Washington, DC 20002

**Registro por Web:** [bit.ly/2sL85Qt](http://bit.ly/2sL85Qt)

**Patrocinador(es):** el grupo de Coles y OSSE

**Audiencia:** Bebes, niños pequeños, niños de prekindergarten, maestros, administradores

**Área de conocimiento de base:** Seguridad, salud y nutrición

Sept.

19

**Children and Fire, Fire Extinguisher Training and Storage of Hazardous Materials\*****Units/Clock Hours:**

3 Professional Learning Units

**CCDBG Topic:** Handling and storage of hazardous**Description:** During this hands-on session participants will learn how to properly use and store toxic substances in child care settings. Participants will also learn the parts and function of a fire extinguisher and be introduced to the basic characteristics of children who show interest in fire and how to refer a child to the juvenile fire-setters program.**Date:** Tuesday, Sept. 19, 2017**Time:** 1 - 4 p.m.**Location:** Fire & EMS Department, 1100 4th St. SW, Suite E-700, Washington, DC 20024**Register by email:** [aleazor.taylor@dc.gov](mailto:aleazor.taylor@dc.gov)**Sponsor(s):** DC Fire & EMS Department and OSSE**Audience:** Teachers, administrators, program support staff**Core Knowledge Area:** Health, Safety and Nutrition

Sept.

20

**Pre-K Classroom Assessment Scoring System (CLASS) Instructional Support Community of Practice (CoP) Session 3: Language Modeling****Units/Clock Hours:**

3 Professional Learning Units

**CCDBG Topic:** Child development**Description:** In the last session of the instructional support CoP, participants will learn strategies on how to respond, communicate, and expose children to different uses and forms of language. Teachers will also learn how to explicitly introduce new vocabulary words. **Participants must register for, and attend, all three CoP sessions.****Date:** Wednesday, Sept. 20, 2017**Time:** 1 - 4 p.m.**Location:** OSSE, 810 First St. NE, Eighth Floor, 806 A & B, Washington, DC 20002**Register by Web:** [bit.ly/2tWuGK6](http://bit.ly/2tWuGK6)**Sponsor(s):** Bradley & Associates, LLC and OSSE**Audience:** Preschool teachers, assistant teachers, directors**Core Knowledge Area:** Observing, Documenting and Assessing to Support Young Children and Families; Child Growth and Development

Sept.

20

**Observation and Introductory GOLD® Lab Session NEW!****Units/Clock Hours:**

6 Professional Learning Units

**CCDBG Topic:** Child development**Description:** Participants will learn the art of purposefully observing children in the early childhood classroom, followed by an introduction to the components and structure of GOLD®. Participants will also learn why observation is important, what constitutes useful evidence of children's development and learning, and how to capture objective**Date:** Wednesday, Sept. 20, 2017**Time:** 9 a.m. - 4 p.m.**Location:** OSSE, 810 First St. NE, Third Floor, Grand Hall A & B, Washington, DC 20002**Register by Web:** [bit.ly/2suiFXX](http://bit.ly/2suiFXX)**Sponsor(s):** OSSE and Teaching Strategies**Audience:** All infant, toddler and preschool teachers, assistant teachers and directors**Core Knowledge Area:** Curriculum; Observing, Documenting and Assessing to Support Young Children and Families

Sept.

20

**Preventing and Responding to Food Allergies\*****Units/Clock Hours:**

2 Professional Learning Units

**CCDBG Topic:** Prevention and response to food allergies**Description:** This training will explore the food allergy procedures that should be in place when caring for children in early care and preschool settings according to research-based, Department of Health, Centers for Disease Control and Prevention (CDC) guidelines, and the rights of children with food allergies. Participants will be able to define anaphylaxis, identify common food allergies and their signs and symptoms, outline treatment and management options, learn how to create and follow individual care plans for each child with a food allergy, create and implement a detailed treatment plan in the event of an allergic reaction, and apply and understand best practices for minimizing risks and exposure.**Date:** Wednesday, Sept. 20, 2017**Time:** 1 - 3 p.m.**Location:** OSSE, 810 First St. NE, Ninth Floor, Room 9014, Washington, DC 20002**Register by Web:** [bit.ly/2tIIAni](http://bit.ly/2tIIAni)**Sponsor(s):** OSSE Wellness and Nutrition**Audience:** All infant, toddler and preschool teachers, assistant teachers and directors**Core Knowledge Area:** Health, Safety and Nutrition

Sept.

21

**Interpreting and Using GOLD® Data****Units/Clock Hours:**

6 Professional Learning Units

**Description:** Participants will be introduced to the purposes, structure, and administrator features of GOLD®. Discussions will focus on supporting teachers throughout the four-step assessment cycle. Administrators will learn about the major reports featured in GOLD® and practice interpreting the data found in the reports. In addition, participants will identify and discuss a variety of implementation challenges and ways to overcome them. By the end of the session, administrators will be fully prepared to support the teachers in their program as they implement GOLD®.

**Date:** Thursday, Sept. 21, 2017

**Time:** 9 a.m. - 4 p.m.

**Location:** OSSE, 810 First St. NE, Third Floor, Grand Hall A & B, Washington, DC 20002

**Register by Web:** [bit.ly/2tlZRwQ](http://bit.ly/2tlZRwQ)

**Sponsor(s):** OSSE and Teaching Strategies

**Audience:** Administrators, directors, assistant directors

**Core Knowledge Area:** Program Management: Operation and Evaluation

Sept.

26

**Infant Safe Sleep Practices\*****Units/Clock Hours:**

2 Professional Learning Units

**CCDBG Topic:** sudden Infant Death Syndrome (SIDS) and use of safe sleep practices

**Description:** Participants in this course will identify behaviors that increase the risk of SIDS and sleep related infant deaths, learn ways to reduce the risk of SIDS in child care settings, and learn how to communicate with parents and other caregivers about safe sleep practices. This course reflects the American Academy of Pediatrics' revised recommendations for a safe sleep environment.

**Date:** Tuesday, Sept. 26, 2017

**Time:** 10 a.m. - 12 p.m.

**Location:** DC Department of Health, 899 North Capitol St. NE, 3rd Floor, Washington, DC 20002

**Register by Web:** [bit.ly/2uPySrw](http://bit.ly/2uPySrw)

**Sponsor(s):** DC Department of Health, Community Health Administration and OSSE

**Audience:** Teachers, assistant teachers, care givers, volunteers, substitutes, directors

**Core Knowledge Area:** Health, Safety and Nutrition

Sept.

26

**Adult/Pediatric First Aid and CPR\*****Units/Clock Hours:**

7 Professional Learning Units

**CCDBG Topic:** Pediatric first-aid and CPR

**Description:** With an emphasis on hands-on-learning, the First Aid/CPR/AED courses give participants the skills to save a life. Participants will also learn how diseases are transmitted and will discover preventative measures for limiting the spread of disease in child care facilities.

**Date:** Tuesday, Sept. 26, 2017

**Time:** 9 a.m. - 5 p.m.

**Location:** OSSE, 810 First St. NE, Third Floor, Grand Hall Side A, Washington, DC 20002

**Register by Web:** [bit.ly/2tRcVea](http://bit.ly/2tRcVea)

**Sponsor(s):** The Coles Group and OSSE

**Audience:** All staff members involved in providing direct care to children (teachers, assistant teachers, care givers, volunteers, substitutes, directors, etc.)

**Core Knowledge Area:** Health, Safety and Nutrition

Sept.

26

**Stewards of Children:  
Child Sexual Abuse Prevention\*****Units/Clock Hours:**

2 Professional Learning Units

**CCDBG Topic:** Recognition and reporting child abuse and neglect

**Description:** This training teaches participants how to prevent, recognize and react responsibly to child sexual abuse. The training includes discussion about critical issues in sexual abuse prevention and the relevance of these issues in our communities. Participants will leave with practical skills they can use daily, and knowledge of ways their program can implement policies to proactively reduce the risk of child sexual abuse.

**Date:** Tuesday Sept. 26, 2017

**Time:** 3 - 5 p.m.

**Location:** Safe Shores, 429 O St. NW, Washington, DC 20001

**Register by Web:** [safeshores.org/stewards-of-children.html](http://safeshores.org/stewards-of-children.html) or email [stewards@safeshores.org](mailto:stewards@safeshores.org)

**Sponsor(s):** Safe Shores – The DC Children's Advocacy Center and OSSE

**Audience:** Teachers, administrators, program support staff

**Core Knowledge Area:** Health, Safety and Nutrition



Sept.

27

**How to Prevent and Control Infectious Diseases****Units/Clock Hours:**

2.5 Professional Learning Units

**CCDBG Topic:** Prevention and control of infectious diseases (Including immunizations)

**Description:** This session will provide an overview on how to prevent and control infectious diseases, including information on immunizations and influenza.

**Date:** Wednesday, Sept. 27, 2017

**Time:** 9 – 11:30 a.m.

**Location:** DC Child Care Connections, 209 Upshur St. NW, Third Floor, Washington, DC 20011

**Register by Web:** [bit.ly/2uvbxvy](http://bit.ly/2uvbxvy)

**Sponsor(s):** Children's National Health Systems and OSSE

**Audience:** All infants, toddler and preschool teachers, assistant teachers and directors

**Core Knowledge Area:** Health, Safety and Nutrition

Sept.

27

**Pre-K Classroom Assessment Scoring System (CLASS) Advanced Session: Instructional Support****Units/Clock Hours:**

3 Professional Learning Units

**CCDBG Topic:** Child development

**Description:** This session will focus on how to use strengths-based strategies in order to understand the differences between general and content-specific instructional supports. Participants will discuss how interactions may look different based on the child's individualized needs and method of communicating.

**Date:** Wednesday, Sept. 27, 2017

**Time:** 9:30 a.m. – 12:30 p.m.

**Location:** OSSE, 810 First St. NE, Eighth Floor, 806 A & B, Washington, DC 20002

**Register by Web:** [bit.ly/2tRmPN5](http://bit.ly/2tRmPN5)

**Sponsor(s):** Bradley & Associates, LLC and OSSE

**Audience:** Preschool teachers, assistant teachers, directors

**Core Knowledge Area:** Observing, Documenting and Assessing to Support Young Children and Families; Child Growth and Development

Sept.

27

**Period of Purple Crying\* NEW!****Units/Clock Hours:**

1 Professional Learning Units

**CCDBG Topic:** Shaken Baby Syndrome/Abusive Head Trauma

**Description:** This training will introduce the Shaken Baby Syndrome/Abusive Head Trauma and infant abuse prevention. This session will include discussion of common injuries, coping mechanisms and a simulation of injuries that could occur when a baby is shaken.

**Date:** Wednesday, Sept., 27, 2017

**Time:** 9 - 10 a.m.

**Location:** Children's National Medical Center, 111 Michigan Ave. NW, Second Floor, Main Auditorium, Washington, DC 20010

**Register by Web:** [bit.ly/2tRq4nM](http://bit.ly/2tRq4nM)

**Sponsor(s):** Children's National Health System and OSSE

**Audience:** Child care providers, teachers, assistant teachers, volunteers, nurses, social workers, directors

**Core Knowledge Area:** Health, Safety and Nutrition

Sept.

28

**Administration of Medication (AOM) Training****Units/Clock Hours:**

2 Professional Learning Units

**CCDBG Topic:** Administration of medication

**Description:** During this course, participants will discuss basic medication administration guidelines, how to properly handle and store medications, and proper documentation of the administration of medication.

**Date:** Thursday, Sept. 28, 2017

**Time:** 10 a.m. – 12 p.m.

**Location:** DC Child Care Connections, 209 Upshur St. NW, Third Floor

**Register by Web:** [bit.ly/2tWlep1](http://bit.ly/2tWlep1)

**Sponsor(s):** Kids Comprehensive Services and OSSE

**Audience:** All infant, toddler and preschool teachers, assistant teachers and directors

**Core Knowledge Area:** Health, Safety and Nutrition

## Online Training Options

The course offerings featured in this section are approved online training programs designed to meet the 12 CCDF Health and Safety Training requirements. Please note: Completion certificates are required and web-based courses may cost an additional fee.

Early Educator Central:

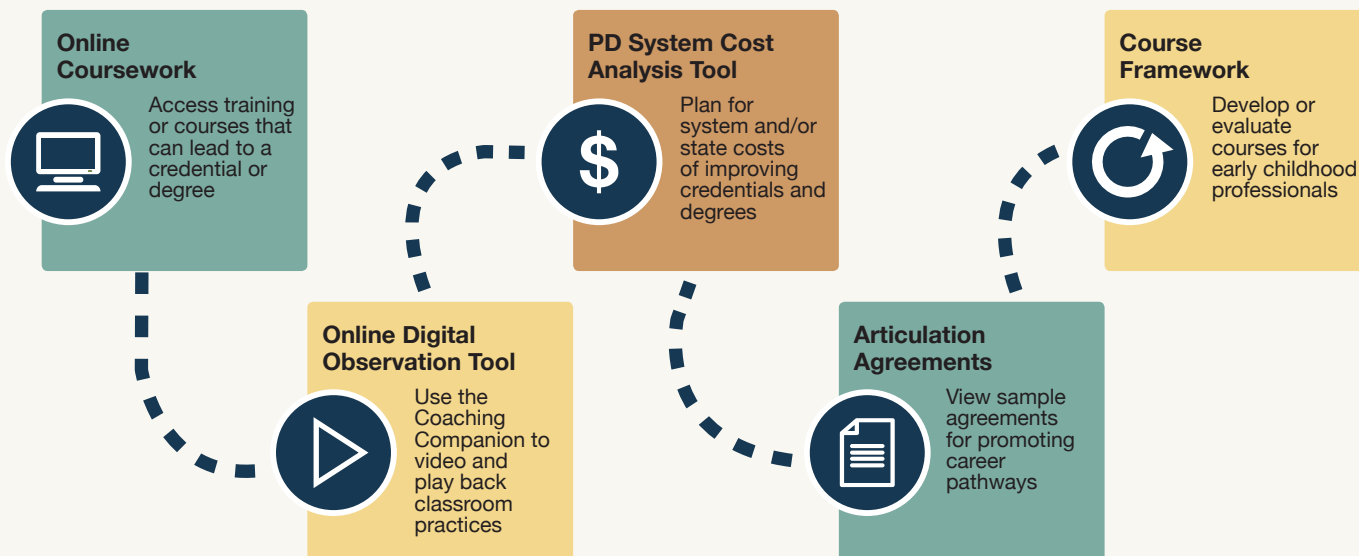
# Pathways to Credentials and Degrees for Infant-Toddler Educators

No matter what your infant-toddler career pathway is, you'll find resources—organized by role—to help you build your competency and your impact. On track for a Child Development Associate (CDA) Credential™ for yourself? Looking to strengthen your skills as an administrator, coach, trainer, or consultant? Designing credit or non-credit coursework? Early Educator Central features essential tools for leaders, including a Professional Development (PD) System Cost Analysis Tool and model articulation agreements for use in higher education. Early Educator Central can help!

## We have resources to help:



## Our resources include:



Start Exploring Now!  
Visit <https://earlyeducatorcentral.acf.hhs.gov>







# Child and Family Services Agency

## Online Mandated Reporter Training

ENGLISH/SPANISH

We all want every child in our city to grow up in safe and healthy families, yet the tragic fact is that thousands of our young people fall victim to abuse and neglect each year.

You can help. Your work gives you regular access to many children and youth, and an opportunity to play a critical role in protecting them. Mandated reporters are professionals obligated by law to report known or suspected incidents of child abuse and neglect. As a mandated reporter, you are part of the citywide safety net that provides life-saving interventions for vulnerable children and youth in our community.

This website provides the information you need to recognize the signs of abuse and neglect, and how to make a report. Thank you for taking time to work through this important training and for your invaluable partnership in looking out for the District's children and youth.

<https://dc.mandatedreporter.org/pages/Welcome.action>



## MULTIHAZARD PLANNING FOR CHILDCARE

This online course, developed and provided by FEMA, covers the steps to help childcare providers prepare for incidents to ensure the safety of the children at their site. Childcare providers must have plans and procedures to keep children safe from everyday hazards and to respond and recover when an emergency happens.

The goal of this course is to provide childcare providers, of all sizes and with responsibility for children of all ages, with the knowledge and tools to analyze the hazards and threats at the site, to develop a plan to address these hazards and threats, and to implement processes to update and practice the emergency plan.

The topics addressed in this course include:

- Knowing your hazards.
- Developing a plan.
- Testing and updating your plan

This course culminates in a two-hour training certificate.

Register here: <http://1.usa.gov/1B9oKeJ>



# FEMA



Every day you see them reach milestones.  
There are free resources to help you spot a few more.

You spend your day working with, playing with, and watching children, and you are already familiar with many milestones — such as pointing at objects, smiling, and playing with others — that mark a child's development. All children are unique, but sooner or later, you will see a child who is not developing as they should. Free information on developmental milestones from 2 months to five years is available for child care providers and preschool teachers.

For **FREE** materials, visit **[www.cdc.gov/ActEarly](http://www.cdc.gov/ActEarly)**  
or call **1-800-CDC-INFO**.



Learn the Signs. Act Early.



## ON-LINE TRAININGS

### MULTIPLE OFFERINGS

**Units/Clock Hours:** Various

**Core Knowledge Area:** Various

**Alignment:** DC Common Core Early Learning Standards

**Description:** ChildCare Education Institute (CCEI) specializes in providing online training and certificates, child care registry development, and administrative solutions for the early care and education industry. As a leading distance training provider in child care, CCEI offers professionals 100+ online child care training courses in English and Spanish to meet licensing, recognition program, and Head Start requirements.

**Time:** Open Enrollment/ Self-paced

**Register by Web:** [cceionline.com](http://cceionline.com)

**Cost:** varies

**Sponsor(s):** Child Care Education Institute

**Audience:** Teachers, administrators, before/after care, out-of-school time

### DC MANDATED REPORTER TRAINING

**Units/Clock Hours:** 2 Professional Learning Units

**Core Knowledge Area:** Professionalism and Advocacy

**Alignment:** Licensing

**Description:** This engaging training contains definitions, examples, and signs of child abuse and neglect, numerous links to resources and DC legal codes, helpful tips for mandated reporters, and interactive learning checks to confirm you learned Important concepts.

**Date:** Online Virtual Training

**Time:** Open Enrollment/ Self-paced

**Register by Web:** [dc.mandatedreporter.org/pages/Welcome.action](http://dc.mandatedreporter.org/pages/Welcome.action)

**Cost:** FREE

**Sponsor(s):** Child and Family Services Administration

**Audience:** Teachers, administrators, before/after care, out-of-school time

### MULTIPLE OFFERINGS

**Units/Clock Hours:** Various

**Core Knowledge Area:** Various

**Alignment:** DC Common Core Early Learning Standards

**Description:** Early Care Institute specializes in providing online training and certificates, child care registry development, and administrative solutions for the early care and education industry. As a leading distance training provider in child care, Early Care Institute offers courses to meet licensing, recognition program, and Head Start requirements.

**Time:** Open Enrollment/Self-paced

**Register by Web:** [earlycareinstitute.com](http://earlycareinstitute.com)

**Cost:** varies

**Sponsor(s):** Childcare Management Solutions

**Audience:** Teachers, administrators, before/after care, out-of-school time

### MULTIPLE OFFERINGS

**Units/Clock Hours:** Various

**Core Knowledge Area:** Various

**Alignment:** DC Common Core Early Learning Standards

**Description:** CYPHERWORX specializes in all online courses that are self-paced and interactive. Incorporating games and rich visuals so that our Out-of-School Time learners retain the information long after they have completed the course. Each of our courses comes with a Resource PDF that contains 3 download Learning Tasks Checklist, Course Information and Materials, and an Activity PDF. The full catalog includes hundreds of courses relevant to school-age childcare including a 36 course series with in-depth curriculum content, interactivity, and certificates.

**Time:** Open Enrollment/ Self-paced

**Register by Web:** [ostpd.com](http://ostpd.com)

**Cost:** varies

**Sponsor(s):** CYPHERWORX

**Audience:** Out-of school time

# WANT TO LEARN MORE?

## Additional Professional Development Resources

---

Advocates for Justice: [aje-dc.org](http://aje-dc.org)

American Academy of Pediatrics (SIDS): [wyostars.com/pdfs/aap\\_sids.pdf](http://wyostars.com/pdfs/aap_sids.pdf)

Center for Disease Control and Prevention: [cdc.gov](http://cdc.gov)

Council for Professional Recognition: [cdacouncil.org/](http://cdacouncil.org/)

Council for Exceptional Children: [cec.sped.org/](http://cec.sped.org/)

DC Early Intervention: [osse.dc.gov/service/strong-start-dc-early-intervention-program-dc-eip](http://osse.dc.gov/service/strong-start-dc-early-intervention-program-dc-eip)

Early Childhood Investigations Webinars: [earlychildhoodwebinars.com](http://earlychildhoodwebinars.com)

Early Childhood Training and Technical Assistance System: [childcareta.acf.hhs.gov/ccdf-reauthorization](http://childcareta.acf.hhs.gov/ccdf-reauthorization)

Early Educator Central: [earlyeducatorcentral.acf.hhs.gov](http://earlyeducatorcentral.acf.hhs.gov)

Early Stages: [earlystagesdc.org](http://earlystagesdc.org)

Georgetown University Center for Continuing and Professional Education/Early Intervention: [scs.georgetown.edu/programs\\_nc/CE0110/early-intervention?dID=5](http://scs.georgetown.edu/programs_nc/CE0110/early-intervention?dID=5)

Head Start Information Services: [eclkc.ohs.acf.hhs.gov/hslc](http://eclkc.ohs.acf.hhs.gov/hslc)

Learn DC: [learndc.org](http://learndc.org)

National Association for the Education of Young Children: [naeyc.org/](http://naeyc.org/)

National Black Child Development Institute: [nbcidi.org/](http://nbcidi.org/)

Save the Children: [savethechildren.org](http://savethechildren.org)

Sesame Street: [sesamestreet.org/freeonlinecourse](http://sesamestreet.org/freeonlinecourse)

Shaken Baby Syndrome: [3seconds.org/](http://3seconds.org/)

Small Business Association (SBA): [sba.gov/tools/sba-learning-center/search/training](http://sba.gov/tools/sba-learning-center/search/training)

US Consumer Product Safety Commission: [cpsc.gov](http://cpsc.gov)

Zero To Three: [zerotothree.org/](http://zerotothree.org/)

## Training Listed beyond this point are provided for a fee by OSSE Certified Trainers

### Food Handler's Certification

**Units/Clock Hours:** 5 Professional Learning Units

**Description:** The goal of this certified professional food manager course is to provide the participant with a basic understanding of food safety and ensure that the participant learns to prepare and serve food safely. A food handler card confirms that the participant has demonstrated competence in knowing safe temperatures for cooking and holding food; the importance of personal hygiene; how to identify cross-contamination and what is the cause; and how to prevent contamination from equipment, tools and utensils and more!

**Cost:** \$85

**Date:** (Saturdays) July 22 and Aug. 26, 2017

**Time:** 9:30 a.m. - 3:30 p.m.

**Location:** Central Union Mission, 65 Massachusetts Ave. NW, Washington, DC 20001

**Register by E-mail/Phone:** [openheart11@verizon.net](mailto:openheart11@verizon.net) or (301) 297-9288 or (240) 832-2683

**Sponsor(s):** City Wide Community Training Institute

**Audience:** Infant-toddler teachers, administrators and program support staff

### Child Care and Development Block Grant Health and Safety (CCDBG) Course Modules

**Units/Clock Hours:** 33.5 Clock Hours

**Description:** Child Care Management Solutions (CMS) provides CCDBG Health and Safety courses designed to ensure that your staff has the core knowledge and skills that protect children. CMS can provide professional development modules in the 11 topic areas at your child care center for a fee. In addition, CMS Early Care Institute provides online training at ([www.earlycareinstitute.com](http://www.earlycareinstitute.com)) on a number of topics for early childhood professionals.

**Date & Time:** Ongoing

**Location:** Onsite and Online

**Registration and Cost:** Call (301) 203-7648 or email: [info@cms4training.com](mailto:info@cms4training.com)

**Sponsor(s):** Childcare Management Solutions

**Audience:** All teachers, assistant teachers, directors and home care providers

### 45 Hour Infant Toddler CDA Renewal Course

**Units/Clock Hours:** 45 Clock Hours

**Description:** This 45 Hour Infant/Toddler course is accepted by the CDA Council for the 45 hour CDA Renewal. This is an advanced level course for experienced child care professionals. It teaches guidelines for working with infants and toddlers in any child care setting.

**Date & Time:** Ongoing

**Location:** Online [www.earlycareinstitute.com](http://www.earlycareinstitute.com)

**Register by:** Online [www.earlycareinstitute.com](http://www.earlycareinstitute.com)

**Sponsor(s):** Childcare Management Solutions

**Audience:** All teachers, assistant teachers, directors and home care providers needing Infant/Toddler Renewal

### 45 Hour Infant Toddler Course

**Units/Clock Hours:** 45 Clock Hours

**Description:** This 45 hour infant toddler course introduces the major concepts, principles, theories and research related to the development and care of children birth to three years of age. Participants will learn to create a healthy and safe environment for care and early learning, by applying the principles of infant/ toddler growth and development. (This course is accepted by the CDA Council for the 45 hour Infant/Toddler CDA Renewal.)

**Cost:** Varies

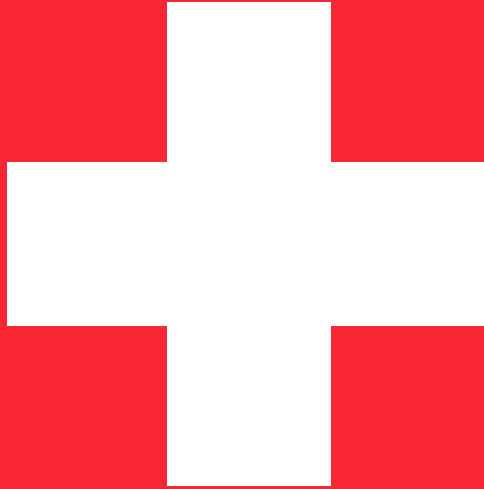
**Date & Time:** Ongoing

**Location:** Online [www.earlycareinstitute.com](http://www.earlycareinstitute.com)

**Register by:** [www.earlycareinstitute.com](http://www.earlycareinstitute.com)

**Sponsor(s):** Childcare Management Solutions

**Audience:** All infant/toddler teachers, directors and home care providers



## CPR RESOURCES

Organization	Registration	Location	Cost
OSSE The Coles Group, LLC Marvin Coles (202) 486-6019 <a href="mailto:marvin@thecolesgroupdc.com">marvin@thecolesgroupdc.com</a>	Listed in OSSE catalog and must register through Eventbrite	Will Vary	FREE Limited Space
Loving Your Heart, LLC Joan Irabor	(202) 340-0980 <a href="mailto:Joan20131@gmail.com">Joan20131@gmail.com</a>	5212 Drake Place SE Washington, DC 20019	Call for Pricing
Javonne Haynes	(202) 256-9214 <a href="mailto:Javonne332000@yahoo.com">Javonne332000@yahoo.com</a>	Will Vary	Call for Pricing
Patricia Burton- McFadden	(240) 714-0014 (202) 604-6508 <a href="mailto:divaenterprize@gmail.com">divaenterprize@gmail.com</a>	Will Vary	Call for Pricing
Marcus Pratt	(202) 701-5705 <a href="mailto:Mp.cpr1st.aed@gmail.com">Mp.cpr1st.aed@gmail.com</a>	Mobile Service	Call for Pricing
Donna Thomas Walter Royster	(202) 689-0429 or 0443 <a href="mailto:pulseone@yahoo.com">pulseone@yahoo.com</a>	Will vary	Call for Pricing
Bernida Thompson	(202) 882-8073 (202) 270-3266 <a href="mailto:bthompson@rootspcs.org">bthompson@rootspcs.org</a>	Will Vary	Call for Pricing
Know CPR Don Sussman	(703) 528-7045 <a href="mailto:info@knowcpr.com">info@knowcpr.com</a>	Will Vary	Call for Pricing
Turning Corners, LLC Khadijah Alima Long	(240) 615-0407 <a href="mailto:turningcornersllc@yahoo.com">turningcornersllc@yahoo.com</a>	Will Vary	Call for Pricing



# OSSE-Certified Trainer Resource Guide

**The trainers listed beyond this point are  
Fee-for-service professional development providers.**

## FREQUENTLY ASKED QUESTIONS:

### 1. Why are Approved Trainers Important?

Research shows that early childhood professionals with specialized training AND higher education/professional credentials are more likely to create quality experiences for young children and their families. All staff in early childhood programs must provide evidence that they are receiving specialized training via continuing education and professional development activities. Continuing education requirements may vary depending on the type of program (subsidized child care, Head Start, publicly funded pre-K, etc).

The Office of the State Superintendent of Education (OSSE) approves competent individuals and organizations to train early childhood professionals. Trainers are selected based on their education and experience in the field. Only trainings delivered by OSSE approved trainers, accredited colleges/universities or other OSSE approved sources are acceptable.

### 2. What Counts as Continuing Education?

**Professional Development Training/Clock Hours:** At minimum, training participants should receive Professional Development Training Hours for the total length of the training. This is commonly referred to as “clock hours.”

**Continuing Education Units (CEUs):** A CEU is participation in a recognized continuing education program. Some colleges, universities, and OSSE certified training organizations can award CEUs.

1 CEU = 10 Professional Development Training/Clock Hours.  
See question 3 for additional guidelines.

**Academic Credit Hours:** Colleges and universities award academic credit hours after a course of studies has been successfully completed. 1 academic credit = 15 Professional Development Training/Clock Hours. Most college courses are 3 academic credit hours. See question 3 for additional guidelines.

### 3. Are there additional guidelines or recommendations?

If seeking CEUs, OSSE certified training organizations authorized by the [International Association for Continuing Education & Training](#) (IACET) or colleges/universities accredited by regional accrediting bodies, National Association for the Education of Young Children (NAEYC) or National Council for Accreditation of Teacher Education (NCATE) are highly recommended.

If seeking Academic Credit Hours, colleges/universities accredited by regional accrediting bodies, National Association for the Education of Young Children (NAEYC) or National Council for Accreditation of Teacher Education (NCATE) is highly recommended.

### 4. How do I Select an Approved Trainer?

- a) Determine Your Training Needs - Core Knowledge Areas and Content Level

#### Core knowledge Area:

The Core Knowledge Areas detail the specific knowledge and skills needed by early childhood professionals to work effectively with all young children and families. Use classroom assessments, staff evaluations, and other data about your program to determine the core knowledge area that you or your staff needs more support with.

#### Training Content Level:

What level of training are you seeking?

- Basic Content Level: The audience is somewhat new to the concept and needs to learn or relearn the basics.
- Intermediate Content Level: The audience understands the basics, but needs to apply what is learned.
- Advanced Content Level: The audience understands the basics, has already applied the concepts, but needs to understand how to evaluate and synthesize the effectiveness of implementation.

- b) Identify and Contact the Trainer(s)

Make sure that the trainer you selected is certified to train in the core knowledge area and at the level you are seeking. The trainer must have a current (not expired) certification. This list will be revised periodically. Please contact us to confirm that you have the most recent listing. The trainer's name and certification number must be listed on the training certificate. \*\*OSSE is not responsible for arrangements made with outside trainers and cannot guarantee the quality of services provided by these trainers. \*\*

- c) Apply Concepts Learned

Continuing education is more than “getting clock hours.” The topics and content level should be intentionally selected. The concepts learned should be used to provide quality experiences for young children and their families.

- d) Reflect on & Evaluate the Impact

Did the training have an impact? What were the challenges of implementation? Identify the next steps. Quality is a continuous improvement and reflection process.

### 5. What is the Function of the Office of the State Superintendent of Education?

The Office of the State Superintendent of Education (OSSE) provides leadership and coordination to ensure all District of Columbia children from birth to kindergarten entrance have access to high-quality early childhood development programs.

OSSE works to develop an effective early childhood education system by:

- implementing high standards for programs and professionals
- creating supports to meet standards
- adhering to rigorous accountability measures
- engaging community stakeholders
- securing strong financial supports

## UNDERSTANDING CORE KNOWLEDGE AREAS:

CURRENT LANGUAGE	PREVIOUS LANGUAGE
1. Child Growth and Development <ul style="list-style-type: none"> <li>- Principles of child growth and development</li> <li>- Domains and stages of development (motor, language, cognitive, social-emotional)</li> <li>- Links between various aspects of development and learning</li> </ul>	1. Human Development
2. Observing, Documenting and Assessing to Support Young Children and Families <ul style="list-style-type: none"> <li>- Observation and assessment of children's behavior</li> <li>- Screening instruments for all domains (motor, language, cognitive, social-emotional)</li> <li>- Using observations and assessments in a effective way to support children and families</li> <li>- Recognize the types and signs of child mental health issues</li> </ul>	2. Observing, Recording and Assessing Children's Behavior
3. Health, Safety, and Nutrition <ul style="list-style-type: none"> <li>- Physical Development, Health and Safety</li> <li>- Nutrition</li> <li>- Types and signs of abuse, neglect, and violence; responsibilities and procedures for reporting abuse and neglect</li> <li>- Developmental consequences of abuse, neglect, stress and trauma</li> </ul>	3. Health, Safety and Nutrition
4. Curriculum <ul style="list-style-type: none"> <li>- Planning and implementing a developmentally appropriate curriculum that advances all areas of children's learning and development</li> <li>- Approaches to Learning, Language and Literacy, Mathematical Thinking, Scientific Inquiry, Creative Arts</li> <li>- Considering culturally-valued content and home experiences</li> <li>- Strategies that offer choices and foster curiosity, problem solving and decision-making</li> <li>- Planning and implementing a curriculum that is aligned with DC's Early Learning Standards</li> </ul>	4. Developmentally Appropriate Curriculum
5. Inclusive Practices <ul style="list-style-type: none"> <li>- Characteristics of children with varied disabilities</li> <li>- Adaptations of curricula to include children with disabilities in all classroom activities</li> <li>- Interventions to enhance the growth and development of children with disabilities and development of Individualized Family Service Plan (IFSP) or Individualized Education Plan (IEP)</li> </ul>	5. Inclusive Practices for Children with Disabilities
--note: Guidance and Management now merged with 11--	6. Guidance and Management
6. Learning Environments <ul style="list-style-type: none"> <li>- Creates learning environments that are responsive to the diverse needs of the abilities and interests of young children</li> <li>- Strategies to implement learning environments that support developmentally appropriate practices (infants, preschoolers, school age)</li> <li>- Adaptations to fully include children with special needs</li> </ul>	7. Learning Environments
7. Building Family and Community Relationship <ul style="list-style-type: none"> <li>- Principles and strategies that view families as functional and resilient with diverse values, cultures, unique temperaments and learning styles</li> <li>- Establishing relationships and communication with families and other community systems that are productive, supportive and pro-active</li> <li>- Issues, challenges, and services regarding mental health</li> </ul>	8. Supportive Relationships with Children Families and other Community Systems

CURRENT LANGUAGE	PREVIOUS LANGUAGE
<p>8. Diversity: Family, Language, Culture, and Society</p> <ul style="list-style-type: none"> <li>- Culture, language and ethnicity as a positive influence on a child's development</li> <li>- Helping young children understand and appreciate different cultural traditions</li> </ul>	<p>9. Diversity, Family, Language, Culture, Society</p>
<p>9. Program Management: Operation and Evaluation</p> <ul style="list-style-type: none"> <li>- Approaches and techniques to plan, organize, and use available resources</li> <li>- Effective strategies for working productively with staff and community resource individuals and agencies</li> <li>- Techniques to conduct program evaluation and to implement program improvements</li> <li>- Interpersonal development and communication including team building, collaboration, and conflict management principles and skills.</li> <li>- Fiscal planning and management</li> </ul>	<p>10. Program Operation and Evaluation</p>
<p>10. Professionalism and Advocacy</p> <ul style="list-style-type: none"> <li>- Scope of the early childhood profession</li> <li>- Impact of federal, state, and local standards, policies, regulations, and laws which govern and impact on children, programs and early childhood professionals</li> <li>- Approaches to evaluate one's professional skills and need for professional development</li> <li>- Responsibility to work with other early care and education professionals, parents and the community to discuss and improve policies, laws, standards, practices that impact children, programs and the profession</li> </ul>	<p>11. Professionalism and Advocacy</p>
<p>11. Social-Emotional Development and Mental Health</p> <ul style="list-style-type: none"> <li>- Social and emotional development</li> <li>- Communication techniques for guiding young children toward self- direction and confidence</li> <li>- Guidance and management strategies that support developmentally appropriate practices</li> <li>- Approaches to provide supportive relationships with children and to foster positive peer-to-peer interactions</li> <li>- Approaches to meet the mental health needs of all children</li> </ul>	<p>12. Social/Emotional Development and Mental Health</p>



## UNDERSTANDING THE TRAINING CONTENT LEVELS:

Content Level	What Audience is this Level of Training for?	Alignment with Bloom's Taxonomy
Basic	The audience is somewhat new to the concept and needs to learn or relearn the basics.	Knowledge Comprehension
Intermediate	The audience understands the basics but need to apply what is learned.	Application Analysis
Advanced	The audience understands the basics, has already applied the concepts, and need to understand how to evaluate and synthesize the effectiveness of implementation.	Synthesis Evaluation

### Identify and Contact the Trainer

- Make sure that the trainer you selected is certified to train in the core knowledge area and at the level you are seeking. The trainer must have a current (not expired) certification. This list will be revised periodically. Please contact us to confirm that you have the most recent listing. The trainer's name and certification number must be listed on the training certificate. \*\* OSSE is not responsible for arrangements made with outside trainers and cannot guarantee the quality of services provided by these trainers\*\*

### Apply Concepts Learned

- Continuing education is more than 'getting clock hours.' The topics and content level should be intentionally selected. The concepts learned should be used to provide quality experiences for young children and their families.

### Reflect on & Evaluate the Impact

- Did the training have an impact? What were the challenges of implementation? Identify the next steps. Quality is a continuous improvement and reflection process.

## CERTIFIED TRAINING- ORGANIZATIONS:

Organization, Primary Contact and Contact Information	Training Content Level	Core Knowledge Area	Trainings Offered in Other Language
Action for Healthy Kids Kristina Shelton (303) 883-2482   (410) 707-9038 <a href="mailto:kshelton@actionforhealthykids.org">kshelton@actionforhealthykids.org</a>	Basic	3	No
Advocates for Justice and Education, Inc. Jazmone Taylor <a href="mailto:jazemone.taylor@aje-dc.org">jazemone.taylor@aje-dc.org</a> (202) 678-8060	Basic	1,2,3,5,10,11	Yes Spanish & Amharic
Apple Tree Institute for Education Innovation Kelly Trygstad (202) 488-3990 <a href="mailto:ktrystad@appletreeinstitute.org">ktrystad@appletreeinstitute.org</a>	Advanced	ALL	Yes Spanish, German, Farsi, Pashto, Portuguese, French & Tagalog
Azspire, LLC Jacqueline Howell (301) 873-7680 <a href="mailto:azspire@gmail.com">azspire@gmail.com</a>	Advanced	4,6,11,8,9	No
BEE Pre-K-3, LLC Delia Richards (301)785-3260 <a href="mailto:drlichece@aol.com">drlichece@aol.com</a>	Advanced	5,8	No
Better Futures, LLC Jahi Davis (202) 587-5638 <a href="mailto:jdavis@betterfuturesdc.com">jdavis@betterfuturesdc.com</a>	Intermediate	1,2,3,4,6,7,9,10	Yes Hindi, Nepali, Urdu
Bright Horizons Children's Centers, LLC Deborah Koshansky (857) 334-1037 <a href="mailto:deborah.koshansky@brighthorizons.com">deborah.koshansky@brighthorizons.com</a>	Basic	1,4,6,7,8,9,10,11	No
Bright Beginnings, Inc. Yasmin Shaffi (202) 842-9090 <a href="mailto:yshaffi@brightbeginningsinc.org">yshaffi@brightbeginningsinc.org</a>	Basic	4	No
Bureau of Nutrition & Physical Fitness, DC DOH Michele Tingling-Clemmons (202) 442-9140 <a href="mailto:Michele.Tingling-Clemmons@dc.gov">Michele.Tingling-Clemmons@dc.gov</a>	Basic	3	Yes Spanish
CentroNia Esteban Morales (202) 332-4200 <a href="mailto:emorales@centronia.org">emorales@centronia.org</a>	Advanced	ALL	Yes Spanish
Chapman Cares, Inc. Andrea Chapman (301) 449-1181 <a href="mailto:chapmancares@aol.com">chapmancares@aol.com</a>	Basic	3 Specialized Area CPR & 1 <sup>st</sup> AID	No

Organization, Primary Contact and Contact Information	Training Content Level	Core Knowledge Area	Trainings Offered in Other Language
ChildCare Education Institute Kimberle Collins (1-800) 499-9907 ext.533 <a href="mailto:kcollins@cceionline.edu">kcollins@cceionline.edu</a>	Advanced	ALL On-Line	Yes Spanish
Child Care Management Solutions Amina Jones Law (301) 203-7648 <a href="mailto:info@cms4training.com">info@cms4training.com</a>	Advanced	ALL On-Line	No
Child Development Consultants, LLC Judith Greenberg (301) 442-3857 <a href="mailto:jgreenberg@childdc.com">jgreenberg@childdc.com</a>	Intermediate	1,5,6,11	Yes Spanish & French
Children's National Medical Center Wayne Neal <a href="mailto:wneal@childrensnational.org">wneal@childrensnational.org</a> Candice Pantor (202) 465-6713 <a href="mailto:CPantor@childrensnational.org">CPantor@childrensnational.org</a>	Advanced	2,3,5,7	No
City Wide Community Child Development Center Shirley Johnson (301) 580-1072   (240) 832-2682 <a href="mailto:openheart11@verizon.net">openheart11@verizon.net</a> <a href="mailto:sjohnson@missiondc.org">sjohnson@missiondc.org</a>	Intermediate	1,3,4,5,6,7,8,11 Specialized Area Food Handlers	No
CYPHERWORX Catherine Anderson (585) 626-8685 <a href="mailto:canderson@cypherworx.com">canderson@cypherworx.com</a>	Basic	ALL On-Line	No
Departmental of Behavioral Health vs. Mental Health Barbara Parks Note: Not open to public (202) 698-1871 <a href="mailto:Barbara.Parks@dc.gov">Barbara.Parks@dc.gov</a>	Intermediate	1,2,3,4,7,8,11	No
Department of Health Sharon Brandon (202) 442-5925 <a href="mailto:Sharon.Brandon@dc.gov">Sharon.Brandon@dc.gov</a>	Advanced	ALL	Spanish
DC Fire & EMS Department Aleazor Taylor (202) 727-2215 <a href="mailto:Aleazor.Taylor@dc.gov">Aleazor.Taylor@dc.gov</a>	Intermediate	2,3,11	No

Organization, Primary Contact and Contact Information	Training Content Level	Core Knowledge Area	Trainings Offered in Other Language
DC Public Library Patty Reeber (202) 727-2313 <a href="mailto:Patty.Reeber@dc.gov">Patty.Reeber@dc.gov</a>	Basic	4	No
Debra L. Byrd & Associates Debra Byrd (703) 965-7637 <a href="mailto:VAbyrds@aol.com">VAbyrds@aol.com</a>	Intermediate	1,2,3,9,11	No
Early Learning Strategies and Solutions (ELSS) LLC Joi Woods 240-270-2199 <a href="mailto:workshops@elssconsulting.com">workshops@elssconsulting.com</a>	Intermediate	3,9,10	No
Early Stages Jane Anderson (202) 698-8037 <a href="mailto:Jane.anderson@dc.gov">Jane.anderson@dc.gov</a>	Intermediate	1,2,3,4,5,6,7,8,10,11	Yes Spanish & Amharic
Easter Seals Jamellah Reid (301) 920-9756   (240) 641-3182 <a href="mailto:reid@eseal.org">reid@eseal.org</a>	Intermediate	6	No
Edward C. Mazique Parent Child Center, Inc. Almeta Keys (202) 462-3375 <a href="mailto:akeys@ecmpcc.org">akeys@ecmpcc.org</a>	Basic	1,2,3,4,5,7,8,9,10	No
Eisenhart & Associates, Educational Consulting Corrine Eisenhart (717) 249-7733   (717) 991-9201 <a href="mailto:EisenhartConsulting@gmail.com">EisenhartConsulting@gmail.com</a>	Advanced	1,2,4,5,6,7,10	No
FAA/DOT Child Development Center Sharleen Smith (202) 267-7672 <a href="mailto:Sharleen.E-CTR.Smith@faa.gov">Sharleen.E-CTR.Smith@faa.gov</a>	Intermediate	ALL	No
Georgetown University Center for Child and Human Development Toby Long (202) 678-8742 <a href="mailto:longt@georgetown.edu">longt@georgetown.edu</a>	Advanced	ALL	Yes Spanish
Hurley and Associates, LLC Eric Hurley (301) 899-1400   (301) 356-2278 <a href="mailto:ehurley@erhurleyassoc.com">ehurley@erhurleyassoc.com</a>	Advanced	ALL	Yes Spanish



Organization, Primary Contact and Contact Information	Training Content Level	Core Knowledge Area	Trainings Offered in Other Language
ICF Early Education Institute Barbara McCreedy (703) 225-2181 <a href="mailto:barbara.mccreedy@icfi.com">barbara.mccreedy@icfi.com</a>	Advanced	ALL	Yes Spanish
Imagination Stage Joanne Seelig (301) 280-1646 <a href="mailto:jseelig@imaginationstage.org">jseelig@imaginationstage.org</a>	Intermediate	1,4,5,11	No
Inner City-Inner Child Ingrid Zimmer (202) 965-2000 ext. 104 <a href="mailto:Ingrid@innercity-innerchild.org">Ingrid@innercity-innerchild.org</a>	Intermediate	4,7,10,11	American Sign Language
Innis Enterprise, Inc. Michelle Marbury (301) 933-0779   (240) 882-5550 <a href="mailto:m.innis@verizon.net">m.innis@verizon.net</a>	Advanced	ALL	Yes Spanish
Instituto de Educac'ion Infantil, Inc. Miriam Baldwin (301) 982-1596 <a href="mailto:mbaldwin20@hotmail.com">mbaldwin20@hotmail.com</a>	Intermediate	1,3,4,6,7,8,9,10,11	Yes Spanish
Kaplan Early Learning Company Stacie Hitzke (800) 334-2014 X6498   (612) 384-6387 <a href="mailto:stacih@kaplanco.com">stacih@kaplanco.com</a>	Advanced	ALL	No
Kids Are Us Learning Centers, Inc Lynita Law-Reid (202) 561-0290 <a href="mailto:lynitakaulc@aol.com">lynitakaulc@aol.com</a>	Intermediate	1	No
Kids Comprehensive Services, LLC Brenda Harris (202) 678-0027   (202) 829-2500 <a href="mailto:brendaharrisw@aol.com">brendaharrisw@aol.com</a>	Advanced	ALL	Yes Spanish
KJ Consulting Group Kamila Johnson (240) 595-2790 <a href="mailto:kamila@kj-consulting.org">kamila@kj-consulting.org</a>	Basic	ALL Specialized Area CPR & 1 <sup>st</sup> AID	Yes Spanish
Know CPR Don Sussman (703) 528-7045 <a href="mailto:info@knowcpr.com">info@knowcpr.com</a>	Advanced	3 Specialized Field CPR & 1 <sup>st</sup> AID	No

Organization, Primary Contact and Contact Information	Training Content Level	Core Knowledge Area	Trainings Offered in Other Language
Loving Your Heart, LLC Joan Irabor (202) 340-0980 <a href="mailto:joan20131@gmail.com">joan20131@gmail.com</a>	Intermediate	3 Specialized Field CPR & 1 <sup>st</sup> AID	No
Martha's Table Thanh Pham (408) 780-5990 <a href="mailto:tpham@marthastable.org">tpham@marthastable.org</a>	Advanced	ALL	Yes Vietnamese Cape Verdean Creole
Mary's Center for Maternal and Child Health Lisa Luceno 202-232-7777 <a href="mailto:lluceno@briya.org">lluceno@briya.org</a>	Advanced	ALL	Yes Spanish
McFarren Aviles and Associates Jill McFarren Aviles 703-505-0127 <a href="mailto:jill@mcfarrenaviles.com">jill@mcfarrenaviles.com</a>	Advanced	2,4,6	Yes Spanish
National Association for the Education of Young Children (NAEYC) (1-800) 424-2460 <a href="http://www.naeyc.org">www.naeyc.org</a>	Advanced	ALL	No
National Black Child Development Institute Georgia Thompson (202) 833-2220 X6550 <a href="mailto:gthompson@nbcddi.org">gthompson@nbcddi.org</a> (202) 833-2220 <a href="http://www.nbcddi.org">www.nbcddi.org</a>	Advanced	ALL	No
National Child Research Center Mary C. Farmer (202) 363-8777 ext. 235 <a href="mailto:mfarmer@ncrcpreschool.org">mfarmer@ncrcpreschool.org</a>	Intermediate	1,4,5,7,9	Yes Spanish
Office of the State Superintendent of Education (OSSE) Professional Development Unit Nigel Henley (202) 727-8119 <a href="mailto:Nigel.Henley@dc.gov">Nigel.Henley@dc.gov</a>	Advanced	ALL	Yes Spanish & Amharic
Office of the State Superintendent of Education (OSSE) Nutrition Katrina Florek (202) 442-4011	Advanced	3	No

Organization, Primary Contact and Contact Information	Training Content Level	Core Knowledge Area	Trainings Offered in Other Language
Quorum Learning Camiley Constantine (404) 325-2225 <a href="mailto:Registrar@Qassist.com">Registrar@Qassist.com</a>	Advanced	ALL On-Line	No
Roots Activity Learning Center, Inc. Bernida Thompson (202) 270-3266   (202) 882-5155 <a href="mailto:bthompson@rootspcs.org">bthompson@rootspcs.org</a> <a href="mailto:idankechi@aol.com">idankechi@aol.com</a>	Advanced	1,3,4,5,10 Specialized Area CPR & 1st Aid	No
Safe Shores-DC Children's Advocacy Erin McGuinness (202) 645-3522 <a href="mailto:emcguinness@safeshores.org">emcguinness@safeshores.org</a> <a href="http://www.safeshores.org">www.safeshores.org</a>	Basic	3	Yes Spanish
School Readiness Consulting Katherine Rowell (877) 447-0327 <a href="mailto:rowell@schoolreadinessconsulting.com">rowell@schoolreadinessconsulting.com</a> <a href="http://www.schoolreadinessconsulting.com">www.schoolreadinessconsulting.com</a>	Advanced	ALL	Yes Spanish
Serve DC Willie McElroy (202) 727-7970   (202) 394-2863 <a href="mailto:Willie.McElroy@dc.gov">Willie.McElroy@dc.gov</a>	Advanced	3 Specialized Area Community Emergency Response Team (CERT)	No
Smithsonian Early Enrichment Center Brooke Shoemaker 202-633-2945 <a href="mailto:shoemakerb@si.edu">shoemakerb@si.edu</a>	Intermediate	6	No
Smithsonian National Air and Space Museum Ann Caspari (202) 633-2557 <a href="mailto:caspariak@si.edu">caspariak@si.edu</a>	Intermediate	4,6	No
Southeast Children's Fund –Professional Development Institute Frances J. Rollins (202) 561-5736 <a href="mailto:sechild@verizon.net">sechild@verizon.net</a> <a href="mailto:rollins.frances@gmail.com">rollins.frances@gmail.com</a>	Advanced	ALL	Yes Spanish & Tagalog
Support By Design Badiyah Mushirah-Sharif (571) 480-9967 <a href="mailto:support-by-design2013@outlook.com">support-by-design2013@outlook.com</a>	Advanced	ALL	No
Teaching Strategies (301) 634-0818 <a href="http://teachingstrategies.com">teachingstrategies.com</a>	Advanced	4	Yes Spanish

Organization, Primary Contact and Contact Information	Training Content Level	Core Knowledge Area	Trainings Offered in Other Language
The Coles Group, LLC Marvin Coles (202) 486-6019 <a href="mailto:marvin@thecolesgroupdc.com">marvin@thecolesgroupdc.com</a>	Advanced	3 Specialized Area CPR & 1 <sup>st</sup> AID	Yes Urdu, Spanish, Punjabi, Hindi, Vietnamese, Korean, Chinese & Amharic
The Ounce of Prevention Fund Renee Welch (312) 922-3863   (708) 805-0195 <a href="mailto:rwelch@ounceofprevention.org">rwelch@ounceofprevention.org</a>	Intermediate	2,9,10	No
Turning Corners LLC Khadijah Alima Long (240) 615-0407 <a href="mailto:turningcornersllc@yahoo.com">turningcornersllc@yahoo.com</a>	Advanced	3 Specialized Area CPR and 1st AID	No
United Planning Organization (UPO) Syrita L. Robinson (202) 238 4636   (240) 304 6227 <a href="mailto:srobinson@upo.org">srobinson@upo.org</a>	Advanced	ALL	Yes Spanish
United States General Services Administration Sandy Axelrod (202) 205-7406 <a href="mailto:sandra.axelrod@gsa.gov">sandra.axelrod@gsa.gov</a>	Advanced	ALL	No
United States Botanic Garden Lee Coykendall (202) 226-1117   (202) 578 8119 <a href="mailto:Lcoykend@aoc.gov">Lcoykend@aoc.gov</a>	Advanced	3,4,6,7,8	No
WETA Susan Schatten (703) 998-2829 <a href="mailto:sschatten@weta.org">sschatten@weta.org</a>	Basic	1,6,11	No
Wolf Trap Foundation for Performing Arts Lori Phillips (703) 255-1933 <a href="mailto:lorip@wolftrap.org">lorip@wolftrap.org</a>	Basic	4, 8	No
YMCA of Metropolitan Washington Kimberly King (202) 232-6700 <a href="mailto:Kimberly.king@ymcadc.org">Kimberly.king@ymcadc.org</a>	Intermediate	1,3,11	No
Zero To Three Frances Moore (202) 857-2998 <a href="mailto:fmoore@zerotothree.org">fmoore@zerotothree.org</a>	Intermediate	2	Yes Spanish

End of Certified Training Organization



## CERTIFIED TRAINING- INDIVIDUALS

Individual and Primary Contact Information	Training Content Level	Core Knowledge Area	Trainings Offered in Other Language
Janina Admana (571) 255-9873 <a href="mailto:jadmana@marthastable.org">jadmana@marthastable.org</a>	Intermediate	1,2,4	No
Shiffaun L. Alston (202) 340-5224 <a href="mailto:alstonsh82@gmail.com">alstonsh82@gmail.com</a>	Basic	1,9,10	No
Berna Artis (202) 257-9528 <a href="mailto:Berna.artis@comcast.net">Berna.artis@comcast.net</a>	Intermediate	1,2,3,4,6,8,10,11	Yes Turkish
Beatriz Barros (202) 808-8021 <a href="mailto:bbarros@marthastable">bbarros@marthastable</a>	Advanced	1,4	No
Ernesta Battle (301) 455-8233 <a href="mailto:dr.ernestabattle@gmail.com">dr.ernestabattle@gmail.com</a>	Advanced	2,4,6,8,9,10,11	No
Linda Bean (202) 529-5437 X105 <a href="mailto:lbean@happyfaces247.com">lbean@happyfaces247.com</a>	Intermediate	1,6,8,9,10	No
Christophe Beard (202) 727-0969 <a href="mailto:Christophe.Beard@dc.gov">Christophe.Beard@dc.gov</a>		1,7,8	No
Saundra Bishop (202) 569-3177 <a href="mailto:saundra@basicsaba.com">saundra@basicsaba.com</a>	Advanced	11	No
Shirley E. Cooley (202) 561-5286   (202) 423-6163 <a href="mailto:secskinner@yahoo.com">secskinner@yahoo.com</a>	Intermediate	1,3,10	No
Lisa Blackwell Danahy (301) 814-7115 <a href="mailto:lisadanahy@gmail.com">lisadanahy@gmail.com</a>   <a href="mailto:lisa@dynamiclifeyoga.com">lisa@dynamiclifeyoga.com</a>	Basic	1,4,8,11 Specialized Area Yoga	No
Robert E. Gundling (703) 960-5853 <a href="mailto:secfund@aol.com">secfund@aol.com</a>   <a href="mailto:rgundling@aol.com">rgundling@aol.com</a>	Advanced	1,9	No
Javonne Haynes (202) 256-9214 <a href="mailto:javonne332000@yahoo.com">javonne332000@yahoo.com</a>	Basic	3 Specialized Area CPR & 1st Aid	No
Nigel Henley (202) 727-8119 <a href="mailto:Nigel.Henley@dc.gov">Nigel.Henley@dc.gov</a>	Advanced	1,9,11	Yes Spanish
Wanda Holmes (202) 441-0173 <a href="mailto:wdholmes@starpower.net">wdholmes@starpower.net</a>	Advanced	1,4,7,8,9	No
Jacqueline Howell (301) 873-7680 <a href="mailto:azspire@gmail.com">azspire@gmail.com</a>	Advanced	4,6,7,10,11	Yes French Sign Language

Individual and Primary Contact Information	Training Content Level	Core Knowledge Area	Trainings Offered in Other Language
Ali Hurewitz (202) 362-3836 <a href="mailto:tsns.ad@templesinaidc.org">tsns.ad@templesinaidc.org</a>	Intermediate	4,6,9	No
Angela Chester Johnson 202-409-7465 <a href="mailto:aglo1001@gmail.com">aglo1001@gmail.com</a>	Advanced	1,3,4	Yes French
Kamila Johnson (240) 595-2790 <a href="mailto:johnsonkamila@yahoo.com">johnsonkamila@yahoo.com</a> <a href="mailto:kamila@kj-consulting.org">kamila@kj-consulting.org</a>	Advanced	3 Specialized Area CPR & 1 <sup>st</sup> AID	Yes Spanish
Shaunte Jones (202) 727-2992 <a href="mailto:Shaunte.Jones@dc.gov">Shaunte.Jones@dc.gov</a>	Advanced	1,2,6,9	No
Majorie A. Kinard 301-890-6805 <a href="mailto:makinard@hotmail.com">makinard@hotmail.com</a>	Basic	1, 9, 11	No
Kimberly King (202) 841-2733 <a href="mailto:askbig@hotmail.com">askbig@hotmail.com</a>	Basic	1,9,10	No
Maimunah Marah (301) 565-0037 <a href="mailto:TutusStorybooks@gmail.com">TutusStorybooks@gmail.com</a>	Advanced	4	No
Patricia L. Burton-McFadden (202) 604-6508   (240) 714-0014 <a href="mailto:diva_enterprize@yahoo.com">diva_enterprize@yahoo.com</a> <a href="mailto:divaenterprize@gmail.com">divaenterprize@gmail.com</a>	Basic	1, 3, 4, 5, 6, 9, 10, 11 Specialized Area CPR & 1 <sup>st</sup> AID	No
Tanetta Merritt (202) 562-7908   (202) 607-1665 <a href="mailto:scfund1@verizon.net">scfund1@verizon.net</a>	Basic	1	No
Sarah Meytin (240) 413-6056 <a href="mailto:sarahmmsam@yahoo.com">sarahmmsam@yahoo.com</a> <a href="mailto:sarah.meytin@bnaishalomofolney.org">sarah.meytin@bnaishalomofolney.org</a>	Basic	7,8,10	No
Melanie Newkirk 240-838-3776 <a href="mailto:mel.newkirk@gmail.com">mel.newkirk@gmail.com</a>	Basic	7	No
Rosalind Oden (202) 441-1381   202-476-3113 <a href="mailto:rpoden@childrensnational.org">rpoden@childrensnational.org</a>	Advanced	2,3,5,7	No
Thanh Pham (408) 780-5990 <a href="mailto:tpham@marthastable.org">tpham@marthastable.org</a>	Advanced	2,4,5	Vietnamese
Cathryn Phillips (301) 586-7934 <a href="mailto:cathrynphillips7@aol.com">cathrynphillips7@aol.com</a>	Intermediate	1,4,6	No
Kameka Pierre (202) 722-2377 <a href="mailto:kpierre@nccinc.org">kpierre@nccinc.org</a>	Basic	3 Specialized Area CPR & 1 <sup>st</sup> AID	No

Individual and Primary Contact Information	Training Content Level	Core Knowledge Area	Trainings Offered in Other Language
Brandee C. Reed (202) 630-0228 <a href="mailto:brandee_reed@yahoo.com">brandee_reed@yahoo.com</a>	Intermediate	9	No
Sunithi Selvaraj (240) 994-4827 <a href="mailto:sueselvaraj@gmail.com">sueselvaraj@gmail.com</a>	Intermediate	3 Specialized Area Food Safety Manager Certification	Yes Hindi, Kanada & Tamil
Stephanie Slater (202) 362-4491 <a href="mailto:Stephanie.Slater@adasisrael.org">Stephanie.Slater@adasisrael.org</a>	Intermediate	1,5	No
Rosalie Slaughter (202) 257-7184 <a href="mailto:rs818@hotmail.com">rs818@hotmail.com</a>	Basic	3,6,8	No
Angelique Speight (202) 270-3098 <a href="mailto:angeliquespeight@yahoo.com">angeliquespeight@yahoo.com</a>	Basic	1	No
Donna Thomas (202) 689-0429 <a href="mailto:pulseone@yahoo.com">pulseone@yahoo.com</a>	Basic	3 Specialized Area CPR & 1 <sup>st</sup> AID	No
Kimberly Tolliver (202) 276-2523 <a href="mailto:dsugrad03@gmail.com">dsugrad03@gmail.com</a>	Basic	1,6	No
LaShawn Tracy (202) 439-0324 <a href="mailto:shawntjra@yahoo.com">shawntjra@yahoo.com</a> <a href="mailto:tracyconsulting37@gmail.com">tracyconsulting37@gmail.com</a>	Intermediate	1,3,4 Specialized Area Food Safety Manager	No
Janet Ngozi Unonu (202) 415-4213 <a href="mailto:Junonu@ecmpcc.org">Junonu@ecmpcc.org</a>	Intermediate	3 Specialized Area Nutrition	Igbo
Cassandra Wallace (202) 465-1891 <a href="mailto:cwallace@marthastable.org">cwallace@marthastable.org</a>	Intermediate	4,11	No
Constance Watkins 301-395-6657   (301) 922-7716 <a href="mailto:clwatkins50@verizon.net">clwatkins50@verizon.net</a>	Intermediate	1,6,11	No
Sherri Watkins (202) 361-8605 <a href="mailto:sherrilee22@yahoo.com">sherrilee22@yahoo.com</a>	Basic	3	No
Christine Schoppe Wauls (703) 624-9451 <a href="mailto:christineccc@aol.com">christineccc@aol.com</a>	Intermediate	4,6,7	No
Darryl Webster (202) 207-4964 <a href="mailto:drrylwbster@aol.com">drrylwbster@aol.com</a>	Advanced	11	No
Julie Wennekes (202) 741-6498 <a href="mailto:Julie.Wennekes@dc.gov">Julie.Wennekes@dc.gov</a>	Advanced	1,5,10	No

TRAINING PLANNING GUIDE:

☐ Based on data, training is needed in

\_\_\_\_\_ (core knowledge area) at the  
\_\_\_\_\_ level (content level)

\_\_\_\_\_ (core knowledge area) at the  
\_\_\_\_\_ level (content level)

\_\_\_\_\_ (core knowledge area) at the  
\_\_\_\_\_ level (content level)

☐ I have a copy of the most current listing of certified trainers.

☐ The trainer is certified to train in the area and at the level I am seeking.

☐ The trainer has a current (not expired) certification.  
The trainer’s name and certification number will be on the certificate issued.

☐ Training participants know that the concepts learned must be applied. Support and monitoring will be provided as needed.

☐ After the training & application, training participants will reflect and evaluate the impact.