



District of Columbia
Office of the State Superintendent of Education



Early Learning Course Catalog
FALL 2017
OSSE Division of Early Learning

osse.dc.gov



facebook.com/ossedc



[@OSSDC](https://twitter.com/OSSDC)



202.727.6436





OSSE Mission

To remove barriers and create pathways for District residents to receive a great education and prepare them for success in college, careers, and life.

Introduction to the Fall 2017 Course Catalog

Thank you for your interest in professional development courses offered by the Office of the State Superintendent of Education, its partners and contractors, as well as the community of OSSE-Certified trainers. We look forward to providing responsive training opportunities that support your work creating high-quality learning experiences for children of all ages.

OSSE-sponsored offerings are data driven and/or research based. Trainings are selected and prioritized based on a variety of data sources including, but not limited to: community requests and workgroups; analysis of program assessment data; student achievement data from federal, state, and District sources; Education Service Monitor program reports; licensing inspection reports; the DC Common Core Early Learning Standards; and DC Municipal Regulations 5A Chapter 1.

The Early Learning Course Catalog was developed to provide the early childhood education (ECE) and Out-of-School Time (OST) workforce with multiple opportunities for professional growth and development; opportunities for meeting the yearly continuing education requirements; and opportunities to participate in a District-wide professional learning community.

CATALOG FORMAT

Early Learning Catalog Distribution Cycle for FY 2017	The Early Learning Course Catalog will be distributed on the following schedule: <ul style="list-style-type: none"> • Fall (October, November, December) • Winter (January, February, March) • Spring (April, May, June) • Summer (July, August, September)
Quarterly Listings	The listings will span a full quarter allowing participants to plan trainings “ahead of time” and allow providers to develop a strategy for incorporating OSSE sponsored trainings into their greater staff development plans.
Table of Contents	The Table of Contents will help readers navigate the content of the course catalog.
Announcement Pages	The Announcement Pages will enable readers to stay abreast of OSSE initiatives and local offerings.
OSSE sponsored trainings	OSSE-sponsored training, provided through a network of local and national partners and contractors are offered at no cost to participants.
Professional Learning Units	The term Professional Learning Units (PLUs) is used in conjunction with “clock hours” to provide greater alignment with the professional development requirements for educators at DC Public Schools, public charter schools, and community-based organizations.
Core Knowledge Areas (CKA):	Core Knowledge Areas detail the specific knowledge and skills needed by early childhood professionals to work effectively with all young children and families. ECE and OST educators can increase their ability to provide quality learning experiences for young children by taking courses in all 11 areas. CKAs include: Child Growth and Development; Observing, Documenting and Assessing to Support Young Children and Families; Health, Safety, and Nutrition; Curriculum; Inclusive Practices; Learning Environments; Building Family and Community Relationships; Diversity: Family, Language, Culture, and Society; Program Management: Operation and Evaluation; Professionalism and Advocacy; and Social-Emotional Development and Mental Health.
Course Listings	Course listings are communicated through an easy to understand visual display. OSSE-sponsored listings also include a live hyperlink to the registration page for easy enrollment in courses. <i>See below.</i>

COURSE LISTING EXAMPLE:

DATE OF OFFERING → Jan. 18

TITLE OF OFFERING → SEASONS IN THE PARK!
ROCK CREEK PARK NATURE CENTER

NUMBER OF “CLOCK HOURS” EARNED → 2.0 Professional Learning Units (clock hours)

CORE KNOWLEDGE AREA COVERED → CKA: Curriculum

COURSE DESCRIPTION → Join Park Ranger Maggie Zadorozny for a field experience geared toward teachers of children ages 2 to 5 years old! Discover the beauty of Rock Creek Park in any season. Hike the nearby forest and look for seasonal changes, meet some of the animals that call the District of Columbia home, and learn about the vast resources available to support.

EVENT DETAILS → **Date:** January 18, 2017
Time: 3 - 6 p.m.
Location: 5200 Glover St. NW, Washington, DC

REGISTRATION INSTRUCTIONS → **Register by Web:** osse.dc.gov
Cost: FREE
Sponsor(s): Rock Creek Park Nature Center and OSSE
(for OSSE-sponsored offerings ‘click’ the link for easy web registration) **Please cancel 48 hours in advance in order to provide spaces for other participants.**

POLICIES AND PROCEDURES:

OSSE-sponsored trainings are offered at no cost to participants. In order to continue providing these dynamic resources for free, we ask that each participant who registers for an OSSE-sponsored training adhere to the following conditions:

- Plan to arrive at least 5-10 minutes before the training is scheduled to begin.
- If you are unable to attend training you've registered for, please e-mail diane.mason@dc.gov at least 48 hours in advance so that your ticket can be used for another participant (no phone calls).
- If arriving late, please note that trainers reserve the right to deny entrance after a 10-minute grace period.
- If arriving late, any certificate issued will reflect your actual professional learning units/clock hours earned and may be sent via e-mail based on trainer preference.
- If arriving late due to an unforeseen emergency, please call (202) 727-6436 to alert the OSSE front desk staff.

FREQUENTLY ASKED QUESTIONS

Where are OSSE's offices?

OSSE is located at 810 First St NE, three blocks behind Union Station. When exiting the station, turn toward the right and walk away from Massachusetts Avenue. Continue down First Street until you see the sign labeled 810. We are located in the same building as the DC Water and Sewer Authority.

What is the closest Metro Station to OSSE?

The closest Metro Station is the Union Station Metro (Red Line).

Is there parking at 810 First Street NE?

Yes. There are a number of parking garages near 810 First Street NE. The prices range from \$15 to \$25 dollars. There is also limited 2-hour on street parking. Please note: We recommend taking the Metro or car pool. It generally takes 15 minutes to find a parking spot and get to the training location. Please plan accordingly.

Do I need an ID to attend training?

Yes. In order to enter the building you will need to show an identification card to sign in with the guard. There is a 100% ID Check policy to enter the building.

What happens if I am late to an OSSE-sponsored training?

If arriving late due to an unforeseen emergency (Metro, Police, Fire, Lost, etc.) please call (202) 727-6436 to alert the OSSE front desk staff. Trainers reserve the right to deny entrance after a 10-minute grace period. Any certificate issued will reflect your actual professional learning units/clock hours earned and may be sent via e-mail based on trainer preference.

Do I need to print my Eventbrite ticket for entry?

Yes. The Eventbrite Ticket serves as proof of your registration. In the event that training is over-booked, preference is given to participants who are registered to attend.

Do I have to register to attend training?

Yes. In the event that training is over-booked, preference is given to participants who are registered to attend. Walk-in participants are not guaranteed a seat or training materials.

What should I do if I am no longer able to attend a class I registered for?

If you are unable to attend training you've registered for, please e-mail diane.mason@dc.gov at least 48 hours in advance so that your ticket can be used for another participant (no phone calls).

When we meet at a community site (Smithsonian, Rock Creek Park, etc.) and I cannot find the training group, what do I do?

During off-site trainings, there is generally an OSSE staff member and/or trainer to greet participants upon their arrival. If arriving late, locate the information booth at the community site and ask for information regarding your class. If you are still unable to find the training, call the OSSE front desk staff at (202)727-6436.

My staff needs training; however, I do not see our preferred content listed in the current catalog. What should I do?

There is an OSSE-Certified Trainer Resource Guide located at the back of each Early Learning Course Catalog. The trainers listed provide fee-for-service training and can work with you to customize trainings for your staff's professional development needs. OSSE Division of Early Learning Professional Development Unit also provides limited on-demand training opportunities.



District of Columbia Child Care Resource and Referral (CCR&R)

Introduction to Kids Comprehensive Services (KCS), LLC and Child Care Resource and Referral (CCR&R)

Kids Comprehensive Services (KCS), LLC was awarded the Child Care Resource and Referral (CCR&R) grant through the Office of the State Superintendent of Education's (OSSE) Division of Early Learning. KCS has partnered with the Division of Early Learning in the leadership and management of a comprehensive CCR&R system. The purpose of the CCR&R system is to create an integrated and effective system of supports and services for families and child care providers in the District of Columbia. The CCR&R system will provide responsive services and evidence-based supports that promote high-quality early care and education in DC. These services and supports include, but are not limited to:

- Helping connect families with early care and education opportunities, including information on how to access educational and financial resources, understand quality child care and the importance of quality in promoting positive child development, and other referrals for supports needed by families seeking child care assistance;
- Connecting early care and education providers to professional development that adheres to the mission and priorities of the Division of Early Learning, and provide information to respond to local and federal regulatory requirements to support the early childhood workforce;
- Providing technical assistance, consultation and coaching to child development facilities on how to

provide inclusive child care settings and meet the needs of children with disabilities and special health care needs surrounding the implementation of high-quality, evidence-based early childhood practices;

- Providing and maintaining access to a resource-rich CCR&R lending library that allows families and early childhood educators to borrow quality literature and books, digital resources, and curriculum resources in person and online; and
- Creating and maintaining collaborative relationships with other agencies within the District government.

CCR&R Supports Families

CCR&R is a free service that takes the guesswork out of locating child care by providing the following services:

- An unbiased customized list of child care providers based on families' individual child care needs;
- Trained specialists to provide guidance by phone, in person, and the internet that enables the family to make informed choices;
- Information on financial assistance strategies for child care payment options;
- Centrally located and public transportation accessible service centers that have a resource library;
- Parent workshops and early child development training; and
- Collaboration with other family support services to promote a holistic vision that includes health, literacy, and special needs.

CCR&R Supports Child Care Providers

CCR&R supports providers to create child care settings that help children grow and learn by offering:

- Child care business owners the opportunity to be listed in the CCR&R database;
- Free professional development in diverse topics and core knowledge areas of health & safety, child growth and development, inclusion, and sound business practices;
- Information on available financial assistance strategies to support access to higher education resources and technical assistance to promote high-quality early childhood education; and
- Centrally located and public transportation accessible service centers including a resource library.

CCR&R Service Center

CCR&R collaborates to build an integrated system of supports and services for families and early child care educators that:

- Administers an early childhood call center and walk-in resource center;
- Manages the trainer approval program and publishes the trainer resource guide;
- Produces the Early Learning Foundations Catalog; and
- Supports continuous quality improvement through diverse professional development opportunities and tiered levels of technical assistance.

CCR&R Service Center Locations:

Point of Contact: Dale Brown

209 Upshur St. NW,
Washington, DC 20011

(202) 829-2500

Monday - Friday: 9 a.m. - 5 p.m.

Point of Contact: Brenda Harris

2041 Martin Luther King Jr. Ave. SE,
Suite 236, Washington, DC 20020

(202) 678-0027

Monday - Friday: 9 a.m. - 5 p.m.

CCR&R Hotline: (202) 829-2500

Monday - Friday: 9 a.m. - 5 p.m.

Translation services provided

CCR&R Email address:

osse.dcchildcareconnections@dc.gov



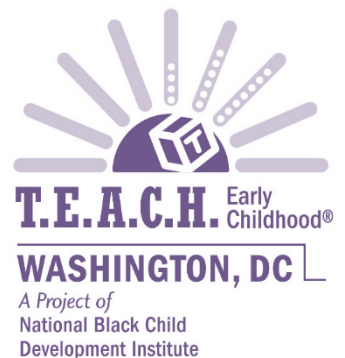
**Give Your Career
A Boost!**

Apply for a Scholarship Today!

Are you planning to obtain your Associate or Bachelor degree in Early Childhood Education?

Contact a scholarship counselor today to learn how you can receive your degree debt-free!

Call 202-833-2220 and “PRESS 4” or visit teach.nbcdi.org!





SPACE IS LIMITED!
FREE CDA TRAINING
EARN 120 CLOCK HOURS

Advance your early learning career by completing the Child Development Associate training.

Information Sessions will be held on

Date: Wednesday, October 18 & 25, 2017
Time: 6:30–8:30 p.m.

Date: Saturday, October 21, 2017
Time: 10 a.m.–12 p.m.

Classes will be held on

Date: November 7, 2017 - March 29, 2018
Times: Tues/Thurs, 6:30-9 p.m. and
 Saturday, 9 a.m.–3 p.m.
 (one time per month)

Date: November 17, 2017 – March 24, 2018
Times: Saturday, 8 a.m.–3 p.m.
 (every other Saturday)
 (Varied training modalities:
 face-to-face; on-line; conference calls)



This program is in partnership with the Office of the State Superintendent of Education (OSSE)

Contact Lorraine Crews at (202) 561-0595 or scf.pdi@gmail.com

4224 6th St. SE, Washington, DC 20032 • (202) 561-0595 • www.sechildrensfund.org



SPACE IS LIMITED!

EARN 45 CLOCK HOURS

Child Development Associate Renewal Training

Information & Registration

Date: Wednesday,
November 15, 2017

Time: 6:30–8:30 p.m.

Date: Saturday,
November 18, 2017

Time: 10 a.m.–12 p.m.

Class Schedule

Dates: December 9, 2017
– March 24, 2018

Every other Saturday

Time: 9 a.m.–3 p.m.

Special Class Offerings

First Aid/CPR

Child Abuse & Neglect

DC Common Core Early
Learning Standards

Health & Safety Training

Reminder: Your CDA credential must be renewed every 3 years.

The CDA credential renewal process must be completed six months before it expires.

This program is in partnership with the Office of the State Superintendent of Education (OSSE)

Contact Lorraine Crews at (202) 561-1100 or scf.pdi@gmail.com





CDA Program

(Child Development Associate)

About us

CentroNía's Child Development Associate (CDA) training program is designed to equip our candidates with the knowledge needed to prepare for the CDA credentialing process administered by the Council for Professional Recognition.

Our CDA training program consists of seven (7) training modules that add up to 150 hours of coursework during a 6-month period. By the end of the program, candidates will be able to meet all the application requirements needed to obtain a CDA credential.

We specialize in both infants/toddlers and preschool - center based specializations.

What we offer.....

- * Free classes (150 hours of early childhood education training)
- * Free materials (CDA books and other resources)
- * Free CPR and First Aid certification
- * Assistance with the completion of the Professional Portfolio
- * Assistance with the application process and a
- * Scholarship to cover 80% of the Council for Professional Recognition's application fee

Requirements

- * Complete the application form (find it at the front desk or our website)
- * Bring a copy of your high school diploma or GED
- * Be working or volunteering with children at a licensed center in the District of Columbia (a letter from your center's director will be required)



For more information about the program and/or questions, please contact:

Mario Platero
mplatero@centronia.org
202-332-4200 ext. 1142

Our classes are FREE thanks to the support of the Office of the State Superintendent of Education (OSSE.)





Programa CDA

(Asociado en Desarrollo Infantil)

Acerca de nosotros.....●

El programa de capacitación para obtener el Asociado en Desarrollo Infantil (CDA) de CentroNía está diseñado para equipar a nuestros estudiantes con los conocimientos que necesitan para prepararse para el proceso de acreditación CDA administrado por el Concilio para el Reconocimiento Profesional.

Nuestro programa de capacitación CDA consiste de siete (7) módulos de capacitación que suman 150 horas durante un lapso de 6 meses. Al final de este programa, los candidatos CDA serán capaces de cumplir con todos los requisitos de aplicación para obtener una credencial de CDA.

Nos especializamos en dos tipos de CDA para centros: Infantes/Toddlers y Preescolares.

Lo que ofrecemos.....●

- * Clases gratuitas (150 horas de educación infantil)
- * Materiales gratis (libros CDA y otros recursos)
- * Certificación CPR y Primeros Auxilios gratis
- * Asistencia en la creación del Portafolio Profesional
- * Asistencia en el proceso de solicitud y verificación y
- * Una beca para cubrir el 80% de la cuota de aplicación del Concilio para el Reconocimiento Profesional



Requerimientos●

- * Completar el formulario de aplicación (Puede encontrarle en recepción o sitio web)
- * Presentar su diploma de secundaria o GED (puede ser de su país natal)
- * Trabajar o ser voluntario(a) con niños en un centro infantil autorizado en el Distrito de Columbia (una carta de su director(a) será requerida)

Para más información sobre el programa y/o preguntas, póngase en contacto con:

Mario Platero
 mplatero@centronia.org
 o llame al 202-332-4200 ext. 1142

Nuestras clases son GRATIS, gracias al apoyo de la Oficina del Superintendente Estatal de Educación (OSSE).



TABLE OF CONTENTS

15	October At-A-Glance
16	October Offerings
23	November At-A-Glance
24	November Offerings
32	December At-A-Glance
33	December Offerings
44	Online Training
47	CPR Resources
48	OSSE-Certified Trainer Resource Guide

CONTACT US!

If you have any questions, comments, or concerns, please feel free to contact the Early Learning Professional Development Unit via e-mail. osse.dcchildcareconnections@dc.gov

Janice.Edwards@dc.gov Dr. Janice Edwards, DC Child Care Connections



CHILD CARE AND DEVELOPMENT BLOCK GRANT ACT (CCDBG): REQUIRED HEALTH AND SAFETY TRAINING

On Nov. 19, 2014, President Obama signed the Child Care and Development Block Grant (CCDBG) Act of 2014 into law. This law reauthorizes the child care program for the first time since 1996, and represents a historic re-envisioning of the Child Care and Development Fund (CCDF) program. The law made significant advancements, including defining health and safety requirements for child care providers. As part of the law, states¹ must have health and safety training requirements, and training and professional development requirements in place by Sept. 30, 2016.

Health and safety requirements and training include the following 12 topic areas:

1. Prevention and control of infectious diseases (including immunization);
2. Prevention of sudden infant death syndrome and use of safe sleep practices (if serving infants and toddlers);
3. Administration of medication, consistent with standards for parental consent;
4. Prevention/response to emergencies due to food and allergic reactions;
5. Building and physical premises safety, including identification of and protection from hazards, bodies of water, and vehicular traffic;
6. Prevention of shaken baby syndrome, abusive head trauma, and child maltreatment²;
7. Emergency preparedness and response planning for emergencies resulting from a natural disaster, or a man-caused event (such as violence at a child care facility);
8. Handling and storage of hazardous materials and the appropriate disposal of bio contaminants;
9. Appropriate precautions in transporting children (if applicable)³;
10. Pediatric first-aid and CPR; and
11. Recognition and reporting of child abuse and neglect.
12. Child development

Pursuant to the CCDBG Act of 2014 and DCMR 5A Chapter 1, new and existing directors, caregivers, and teachers must complete health and safety training in the 12 topic areas listed below. For new directors, caregivers, and teachers, health and safety training in the 12 topic areas must be completed either pre-service or within an orientation period not to exceed three months from the employee's first day of employment. For existing directors, caregivers, and teachers, health and safety training in the 12 topic areas must be completed annually no later than Sept. 30 and repeated each year thereafter. Evidence that new and existing directors, caregivers, and teachers have completed health and safety training in the 12 topic areas must be maintained at the child development facility, in the form of a certificate of completion, and be readily available for inspection.

To assist new and existing directors, caregivers, and teachers in meeting these new training requirements, the Division of Early Learning's Professional Development Unit is offering both synchronous (i.e. classroom) and asynchronous (i.e. online) courses that cover the 12 topic areas. In the catalog, you will see the approved classroom (face-to-face) sessions denoted with a blue asterisk. Any session with this symbol fulfills one or more of the required CCDF topics. There are also several e-learning platforms that offer CCDF Health and Safety Training that are OSSE-approved. Individuals can complete all of the required topics, with the exception of First Aid and CPR, using an e-learning platform. Approved e-learning platforms include: Quorum, Better Kid Care, Pro Solutions, Child Care Education Institute, and courses provided by the Center for Disease Control. First Aid and CPR must be taken in person in a classroom setting.

¹ The term "state" means the 50 states and the District of Columbia.

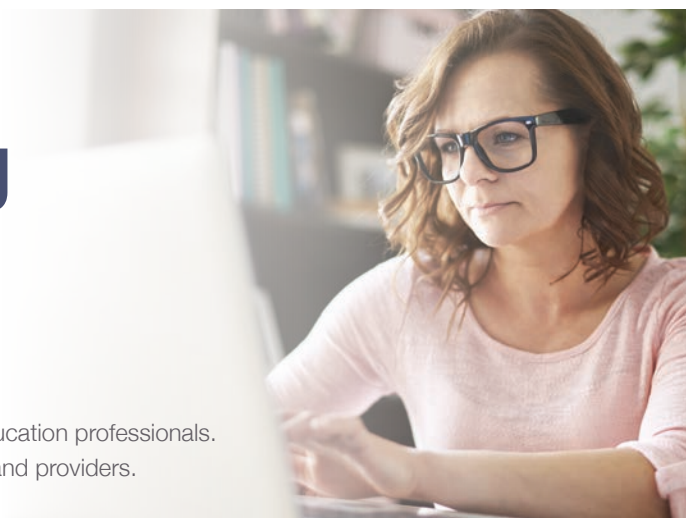
² This training topic is only required for providers that provide care for infants and toddlers.

³ This training topic is only required for providers that offer transportation services to children.

Need to meet the **NEW CCDF Training Requirements?**

You can do this online through Quorum!

Quorum is a unique online professional development program for early education professionals. Quorum annual memberships include UNLIMITED online training for staff and providers.



New Child Care Development Fund (CCDF) regulations* require providers and teachers to complete training in these **11 topic areas:**

Quorum Courses

01. Prevention and control of infectious diseases	Cut the Cooties: Communicable Disease Prevention
02. SIDS and use of safe sleep practices	Safe Sleep & Sweet Dreams for Infants
03. Administration of medication	Cut the Cooties: Communicable Disease Prevention
04. Prevention/response to food allergies 05. Nutrition and physical activity	From Food to Physical Activity
06. Prevention of shaken baby syndrome and abusive head trauma	Understanding Child Abuse & Prevention
07. Building and physical premises safety 08. Emergency preparedness and response planning 09. Storage of hazardous materials and biocontaminants	Keeping Your Child Care Environment Safe & Secure
10. Precautions in transporting children	Traveling with Precious Cargo/Transportation Training for GA
11. First-aid and CPR	Safe Spaces & Places to Grow & Learn

*Section 658E(c)(2)(I)(i), (c)(2)(G) and (c)(2)(I)(i)(i)

What are the benefits of Quorum?



Saves Money

Annual memberships are \$120 per child care provider. Group memberships are available starting at \$50 per staff member per year.



Convenient

Courses are available 24/7, any time, any place. Over 80 hours of training available!



Training Credit

Certificates are awarded upon completion of each course, and a final CCDF certificate will be awarded upon completion of all of the courses above.



High Quality

Course material is high quality, engaging, interactive, relevant, and fun!

For more information and to join Quorum, visit www.kaplanco.com/elearning or call 404-591-2545 for a free webinar!

Available only from:



OCTOBER AT-A-GLANCE

Oct 2	Administration of Medication Training*
Oct 4	The Period of Purple Crying*
Oct 5	Community Emergency Response Team (CERT) Training*
Oct 5	Starting Strong: Nutrition for Infants and Toddlers*
Oct 6	Nutrition for Early Learners*
Oct 10	Food Allergy Prevention and Response*
Oct 11	Stewards of Children: Child Sexual Abuse Prevention*
Oct 12	Training for Mandatory Reporters*
Oct 14	Director's Corner: Using National Association for the Education of Young Children (NAEYC) Code of Ethical Conduct to Address Ethical Issues NEW!
Oct 16	Addressing Challenging Behaviors*
Oct 16	Breathing Easy: Asthma Training for Caregivers of Young Children
Oct 16	WETA Kids Ready to Learn
Oct 17	Emergency Preparedness*
Oct 18	Children and Fires, Fire Extinguisher Training and Storage of Hazardous Materials*
Oct 19	Understanding the Signs of Perinatal Mood and Anxiety Disorder
Oct 23	Precautions in Transporting Children*
Oct 24	Infant Safe Sleep Practice *
Oct 31	How to Prevent and Control Infectious Diseases*

* Denotes a required health and safety course

OCTOBER OFFERINGS

Oct

2

Administration of Medication Training*

Units/Clock Hours:

3 Professional Learning Units

CCDBG Topic: Administration of Medication

Description: During this course, participants will discuss basic medication administration guidelines, how to properly handle and store medications, and proper documentation of the administration of medication.

Date: Monday, Oct. 2, 2017

Time: 9 a.m.-12 p.m.

Location: OSSE, 810 First St. NE, Eighth Floor, Room 806 A & B, Washington, DC 20002

Register by Web: bit.ly/2ftUpUD

Sponsor(s): Children's National Health System

Audience: All infant, toddler and preschool teachers, assistant teachers, and directors

Core Knowledge Area: Health, Safety, and Nutrition

Oct

4

The Period of Purple Crying*

Units/Clock Hours:

1 Professional Learning Units

CCDBG Topic: Prevention of shaken baby syndrome, abusive head trauma and child maltreatment

Description: This training will introduce the Shaken Baby Syndrome/Abusive Head Trauma and infant abuse prevention. This session will include discussion about common injuries, coping mechanisms, and a simulation of injuries that could result when a baby is shaken.

Date: Wednesday, Oct. 4, 2017

Time: 11 a.m.-12 p.m.

Location: Children's National Medical Center, 111 Michigan Ave. NW, Goldberg Center, Floor 1.5, Conference Room, Washington, DC 20010

Register by Web: bit.ly/2ftjkaL

Sponsor(s): Children's National Health System

Audience: Teachers, assistant teachers, child care providers, substitutes, directors, parents, nurses, physicians, social workers, and family support staff

Core Knowledge Area: Child Growth and Development; Health, Safety, and Nutrition

Oct

5

Community Emergency Response Team (CERT) Training*

Units/Clock Hours:

6 Professional Learning Units

CCDBG Topic: Emergency preparedness and response planning for emergencies

Description: This course teaches basic disaster response skills, fire safety, light search and rescue, CERT team organization, disaster psychology, terrorism awareness, and disaster medical operations.

Date: Thursday, Oct. 5, 2017

Time: 9 a.m.-4 p.m.

Location: Frank D. Reeves Center of Municipal Affairs, 2000 14th St. NW, Suite 101, Washington, DC 20009

Register by Web: bit.ly/2htYQeU

Sponsor(s): Serve DC

Audience: All caregivers, teachers, assistant teachers, and directors

Core Knowledge Area: Health, Safety, and Nutrition

Oct

5

Starting Strong: Nutrition for Infants and Toddlers*

Units/Clock Hours:

2.5 Professional Learning Units

CCDBG Topic: Child development

Description: This session will help participants better understand developmental readiness for introducing solid foods to infants and the process of transitioning to table foods. Participants will also be provided with ways to promote good nutrition that will prepare children for a lifetime of growing and learning. This training will also cover the Child and Adult Care Food Program (CACFP) infant meal pattern and feeding guidelines, which all licensed providers are required to follow.

Date: Thursday, Oct. 5, 2017

Time: 9:30 a.m.-12 p.m.

Location: OSSE 810 First St. NE, Fifth Floor, Room 5014, Washington, DC 20002

Register by Web: bit.ly/2yC8NPI

Sponsor(s): OSSE – Wellness and Nutrition

Audience: Infant/toddler teachers, and administrators

Core Knowledge Area: Health, Safety, and Nutrition

Oct

6

Nutrition for Early Learners***Units/Clock Hours:**

2.5 Professional Learning Units

CCDBG Topic: Child development

Description: Good nutrition is a key for supporting healthy development and preparing children for school. This training session will teach you the basics of good nutrition for toddlers and preschoolers as well as planning and preparing nutritious meals with a focus on meeting the Child and Adult Care Food Program (CACFP) meal pattern requirements, which all licensed providers are required to follow. This training will also cover best practices for creating positive meal times and implementing family-style meal service.

Date: Friday, Oct. 6, 2017**Time:** 9:30 a.m.–12 p.m.**Location:** OSSE, 810 First St. NE, Room 5014, Washington, DC 20002**Register by Web:** bit.ly/2y3Yy9k**Sponsor(s):** OSSE – Wellness and Nutrition**Audience:** All caregivers, teachers, assistant teachers, and directors**Core Knowledge Area:** Health, Safety, and Nutrition

Oct

11

**Stewards of Children:
Child Sexual Abuse Prevention*****Units/Clock Hours:**

2 Professional Learning Units

CCDBG Topic: Recognition and reporting child abuse and neglect

Description: This training teaches participants how to prevent, recognize and react responsibly to child sexual abuse. The training includes discussion about critical issues in sexual abuse prevention and the relevance of these issues in our communities. Participants will leave with practical skills they can use daily, and knowledge of ways their program can implement policies to proactively reduce the risk of child sexual abuse.

Date: Wednesday, Oct. 11, 2017**Time:** 3–5 p.m.**Location:** Safe Shores, 429 O St. NW, Washington, DC, 20001**Register by web:** safeshores.org/stewards-of-children.html or email stewards@safeshores.org**Sponsor(s):** Safe Shores – The DC Children’s Advocacy Center**Audience:** Teachers, administrators, and program support staff**Core Knowledge Area:** Health, Safety, and Nutrition

Oct

10

Food Allergy Prevention and Response***Units/Clock Hours:**

2 Professional Learning Units

CCDBG Topic: Prevention/response to emergencies due to food and other allergic reactions

Description: This training will explore the food allergy procedures that should be in place when caring for children in early care and preschool settings according to research-based, Department of Health, Centers for Disease Control and Prevention (CDC) guidelines, and the rights of children with food allergies. Participants will be able to define anaphylaxis, identify common food allergies and their signs and symptoms, outline treatment and management options, learn how to create and follow individual care plans for each child with a food allergy, create and implement a detailed treatment plan in the event of an allergic reaction, and apply and understand best practices for minimizing risks and exposure.

Date: Tuesday, Oct. 10, 2017**Time:** 2–4 p.m.**Location:** OSSE, 810 First St. NE, Room 5014, Washington, DC 20002**Register by Web:** bit.ly/2fuEKEm**Sponsor(s):** OSSE Wellness and Nutrition**Audience:** Teachers, assistant teachers, care givers, volunteers, substitutes, and directors**Core Knowledge Area:** Health, Safety, and Nutrition

Oct

12

Training for Mandated Reporters***Units/Clock Hours:**

3 Professional Learning Units

CCDBG Topic: Recognition and reporting child abuse and neglect

Description: Mandatory Reporter Training contains definitions, examples, and signs of child abuse and neglect, numerous resources and DC legal codes, helpful tips for mandatory reporters, and interactive learning checks to confirm you learned important concepts. After you complete this training, you should be able to understand your legal obligations as a mandatory reporter; define the types of child abuse and neglect; recognize signs of child abuse and neglect; identify groups of children who may be at a higher risk for abuse or neglect, and more.

Date: Thursday, Oct. 12, 2017**Time:** 1–4 p.m.**Location:** OSSE, 810 First St. NE, Third Floor, Grand Hall B, Washington, DC 20020**Register by Web:** bit.ly/2xuZP64**Sponsor(s):** CFSA, OAG**Audience:** Teachers, assistant teachers, directors, coaches, counselors, social workers, and volunteers

Oct

14

Director's Corner: Using National Association for the Education of Young Children (NAEYC) Code of Ethical Conduct to Address Ethical Issues **NEW!**

Units/Clock Hours:

3 Professional Learning Units

Description: This interactive discussion and workshop will guide participants in using the NAEYC Code of Ethical Conduct for making professional decisions related to the operation of their early education programs. During this session, the participants will use the NAEYC Code of Ethical Conduct to practice addressing a variety of ethical issues they may encounter in their daily work with children and families.

Date: Saturday, Oct. 14, 2017

Time: 9:30 a.m.-1 p.m.

Location: DC Child Care Connections, 209 Upshur St. NW, Third Floor, Washington, DC 20011

Register by Web: bit.ly/2xFjOBf

Sponsor(s): Kids Comprehensive Services, LLC

Audience: Directors and administrators

Core Knowledge Area: Program Management: Operation and Evaluation

Oct

16

Breathing Easy: Asthma Training for Caregivers of Young Children

Units/Clock Hours:

2 Professional Learning Units

Description: This training will provide early childhood educators with background to understand early childhood wheezing and asthma, how to manage children with asthma symptoms and how to modify the center environment to best prevent respiratory problems. We will discuss and practice effective techniques for medication administration and how to address the environmental aspects of asthma.

Date: Monday, Oct. 16, 2017

Time: 10 a.m.-12 p.m.

Location: OSSE, 810 First St. NE, Eighth Floor, Room 806 A, Washington, DC 20002

Register by Web: bit.ly/2y3MfJY

Sponsor(s): Impact DC Asthma Program, Children's National Health System Health System

Audience: Infant-toddler and preschool teachers, and directors

Core Knowledge Area: Health, Safety, and Nutrition

Oct

16

Addressing Challenging Behaviors*

Units/Clock Hours:

3 Professional Learning Units

CCDBG Topic: Child development

Description: This workshop uses information and materials from the Center on the Social and Emotional Foundations for Early Learning to help teachers and child care professionals understand why children behave the way they do. It will help teachers and other child care professionals develop universal strategies to address behavior, as well as target intervention strategies.

Date: Monday, Oct. 16, 2017

Time: 9:30 a.m.-12:30 p.m.

Location: OSSE, 810 First St. NE, Third Floor, Grand Hall A, Washington, DC 20020

Register by Web: bit.ly/2xtTn1M

Sponsor(s): Early Stages, DCPS

Audience: Teachers and assistant teachers for children 3-5 years old.

Core Knowledge Area: Social-Emotional Development and Mental Health; Health, Safety, and Nutrition

Oct

16

WETA Kids Ready To Learn

Units/Clock Hours:

1.5 Professional Learning Units

Description: This high-impact session will prepare early childhood educators to nurture a child's natural curiosity and love of learning. Participants will learn to use the appeal and learning goals of PBS KIDS programs, such as Sesame Street and Clifford, to enhance the literacy skills and prepare young children for success in school. The participants will be introduced to 2- 5 new children's books and will receive one of the featured books to add to their classroom library.

Date: Monday, Oct. 16, 2017

Time: 1-2:30 p.m.

Location: OSSE, 810 First St. NE, Third Floor Grand Hall Side A, Washington, DC 20002

Register by Web: bit.ly/2fleKaK

Sponsor(s): WETA

Audience: Teachers, assistant teachers, childcare providers, and after school staff

Core Knowledge Area: Curriculum

Oct

17

Emergency Preparedness***Units/Clock Hours:**

2 Professional Learning Units

CCDBG Topic: Emergency preparedness and response planning for emergencies

Description: Being prepared for emergencies can make a big difference as to whether or not the children in your care and the staff in your program remain safe. In this course, participants will learn about the necessary steps a program should take to ensure preparedness in the event of an emergency, as well as effective strategies to communicate the emergency plan to children, parents, and staff.

Date: Tuesday, Oct. 17, 2017

Time: 9-11 a.m.

Location: DC Child Care Connections, 209 Upshur St. NW, Third Floor, Washington, DC 20011

Register by Web: bit.ly/2hsSD31

Sponsor(s): Emergency Medical Services for Children

Audience: All caregivers, teachers, assistant teachers, and directors

Core Knowledge Area: Health, Safety, and Nutrition

Oct

19

Understanding the Signs of Perinatal Mood and Anxiety Disorder**Units/Clock Hours:**

2 Professional Learning Units

Description: This training is for anyone who works in any capacity with pregnant, post-partum and reproductive age women and their families. Come and learn about the major risk factors for Perinatal Mood and Anxiety Disorders, as well as the different ways that they present in the general population. You will learn how to screen, where and how to refer a mother or family, if needed and what other resources are available in the District for families of various cultures. Families, and most especially children, benefit greatly from knowledgeable professionals that are equipped to identify and refer when the symptoms and risks of anxiety and depression are evident.

Date: Thursday, Oct. 19, 2017

Time: 10 a.m.-2 p.m.

Location: DC Child Care Connections, 209 Upshur St. NW, Third Floor, Washington, DC 20011

Register by Web: bit.ly/2wgWEXA

Sponsor(s): Mary's Center

Audience: Teachers, early childhood mental health consultants, family social workers, family support workers, and early Intervention service coordinators

Core Knowledge Area: Social Emotional Development and Mental Health

Oct

18

Children and Fires, Fire Extinguisher Training and Storage of Hazardous Materials***Units/Clock Hours:**

3 Professional Learning Units

CCDBG Topic: Handling and storage of hazardous materials and the disposal of bio contaminants

Description: During this hands-on session participants will learn how to properly use and store toxic substances in child care settings. Participants will also learn the parts and function of a fire extinguisher, basic characteristics of children who show interest in fire and how to refer a child to the juvenile fire-setter program.

Date: Wednesday, Oct. 18, 2017

Time: 1-4 p.m.

Location: Fire & EMS Department, 1100 4th St. SW, Suite E-700, Washington, DC 20024

Register by email: aleazor.taylor@dc.gov

Sponsor(s): DC Fire & EMS Department

Audience: Teachers, assistant teachers, administrators, and program support staff

Core Knowledge Area: Health, Safety, and Nutrition

Oct

23

Precaution in Transporting Children***Units/Clock Hours:**

2 Professional Learning Units

CCDBG Topic: Appropriate precautions in transporting children

Description: This course provides basic knowledge of transportation regulations, and includes a demonstration on how to properly conduct a vehicle passenger check, the use of child safety restraints required by District law, proper loading, unloading, and monitoring of children. Participants will learn where to find vehicular first aid supplies, and how to conduct emergency procedures and response in the event of accidents or breakdowns.

Date: Monday, Oct. 23, 2017

Time: 10 a.m.-12 p.m.

Location: OSSE, 810 First St. NE, Room 9014, Washington, DC 20002

Register by Web: bit.ly/2hu0cGB

Sponsor(s): DC Department of Transportation, Safe Kids DC Children's National Health System

Audience: All infant, toddler and preschool teachers, assistant teachers, and directors who provide transportation of any kind (before and after school, field trips, etc.)

Core Knowledge Area: Health, Safety, and Nutrition

Oct

24

Infant Safe Sleep Practices***Units/Clock Hours:**

2 Professional Learning Units

CCDBG Topic: Prevention of sudden infant death syndrome (SIDS) and use of safe sleep practices

Description: Participants in this course will identify behaviors that increase the risk of SIDS and sleep related infant deaths, learn ways to reduce the risk of SIDS in child care settings, and learn how to communicate with parents and other caregivers about safe sleep practices. This course reflects the American Academy of Pediatrics' revised recommendations for a safe sleep environment.

Date: Tuesday, Oct. 24, 2017

Time: 10 a.m.-12 p.m.

Location: Department of Health, 899 North Capitol St. NE, 3rd Floor, Washington, DC 20002

Register by Web: bit.ly/2wS27dB

Sponsor(s): DC Department of Health, Community Health Administration

Audience: Teachers, assistant teachers, and care givers

Core Knowledge Area: Health, Safety, and Nutrition

Oct

31

How to Prevent and Control Infectious Diseases***Units/Clock Hours:**

2.5 Professional Learning Units

CCDBG Topic: Prevention and control of infectious diseases (including immunization)

Description: This session will provide an overview on how to prevent and control infectious diseases, including information on immunizations and influenza.

Date: Tuesday, Oct. 31, 2017

Time: 1-3:30 p.m.

Location: DC Child Care Connections, 209 Upshur St. NW, Third Floor, Washington, DC 20011

Register by Web: bit.ly/2ftfr5E

Sponsor(s): Children's National Health System

Audience: Infant-toddler and preschool teachers, assistant teachers, and directors

Core Knowledge Area: Health, Safety, and Nutrition





An Online Community of Educational Learning and Discovery

Start learning today at LearnDC.org

Learn DC.org empowers students, parents, parents, educators and communities with the knowledge they need to be successful. LearnDC.org offers a wealth of data on local schools, including student achievement and school performance, and provides resources for parents seeking quality child care.

An Initiative of the Office of the State Superintendent of Education



osse.dc.gov

 facebook.com/ossedc

 @OSSEDC

 202.727.6436



CHILD DEVELOPMENT ASSOCIATE

Do you love working with children? Do you want to help them learn the basic physical and intellectual skills they will need to succeed in life?

The Workforce Development and Lifelong Learning (WDLL) division of the UDC-Community College is proud to offer the Child Development Associate training program. This course teaches you the theory and practical skills you will need to care for infants and toddlers in family day care and in infant/toddler/preschool classrooms. It will prepare you to apply for the Child Development Associate (CDA) credential, the most widely recognized credential in early childhood education.

How do I become certified?

Once a student completes the course, they will be eligible to apply for the Child Development Associate credential, administered by the Council for Professional Recognition. The application requires the following:

- 480 hours of experience working with children within the past three years in a licensed child development center, home, or school
- Verification visit by a trained Professional Development Specialist
- Creation of a professional portfolio
- Distribution and collection of Family Questionnaires
- Completion of the Direct Assessment Application
- CDA exam

How long is the program?

126 hours over 12 weeks

Check the class schedule at cc.udc.edu/wd for locations and dates.

How do I enroll?

Call or visit any of the WDLL locations. Visit <http://cc.udc.edu/wd> for more information.

How much does it cost?

This program is offered at no cost to eligible DC residents.



To learn more, please visit <http://cc.udc.edu/wd>

NOVEMBER AT-A-GLANCE

Nov 3	Introduction to the Infant/Toddler Environment Rating Scale-Revised (ITERS-R) NEW!
Nov 4	Introduction to the Family Child Care Environment Rating Scale-Revised (FCCERS-R) NEW!
Nov 6	Administration of Medication*
Nov 7	Understanding the Signs of Perinatal Mood and Anxiety Disorder
Nov 7	Stewards of Children: Child Sexual Abuse Prevention*
Nov 7	Food Allergy Prevention and Response*
Nov 8	Starting Strong: Nutrition for Infants and Toddlers*
Nov 8	The Period of Purple Crying*
Nov 9	Community Emergency Response Team (CERT) Training*
Nov 9	Nutrition for Early Learners*
Nov 9	Toy Stories: Promoting Early Childhood Math Skills through Storytelling (Part 1) NEW!
Nov 9	WETA Kids Ready to Learn
Nov 13	Emergency Preparedness*
Nov 15	Children and Fires, Fire Extinguisher Training and Storage of Hazardous Materials*
Nov 15	Trauma and Resilience*
Nov 16	Toy Stories: Promoting Early Childhood Math Skills through Storytelling (Part 2) NEW!
Nov 18	Director's Corner: Networking Strategies NEW!
Nov 18	Community Outreach and Public Relations NEW!
Nov 20	Precautions in Transporting Children and Pedestrian and Bike Safety*
Nov 20	Addressing Challenging Behaviors*
Nov 28	Infant Safe Sleep Practice *
Nov 30	How To Prevent and Control Infectious Diseases*
Nov 30	Stewards of Children: Child Sexual Abuse Prevention*

* Denotes a required health and safety course

NOVEMBER OFFERINGS

Nov

3

Introduction to the Infant/Toddler Environment Rating Scale-Revised (ITERS-R) **NEW!**

Units/Clock Hours:

6 Professional Learning Units

Description: This training provides an introduction to the ITERS-R. During this training participants will learn how the ITERS-R measures quality and what the research tells us about the scale scores. The participants will learn how to access group programs for children from birth to age two and a half using the ITERS-R.

Date: Friday, Nov. 3, 2017

Time: 9 a.m.–4 p.m.

Location: Kellogg Conference Center at Gallaudet University, 800 Florida Ave. NE, Washington, DC 20002

Register by Web: bit.ly/2xHm62Z

Sponsor(s): The Bainum Family Foundation

Audience: Infant/toddler teachers, assistant teachers, directors, quality facilitators, coaches, and technical assistants

Core Knowledge Area: Observing, Documenting, and Assessing to Support Young Children and Families; Program Management: Operation and Evaluation

Nov

6

Administration of Medication Training*

Units/Clock Hours:

3 Professional Learning Units

CCDBG Topic: Administration of medication

Description: During this course, participants will discuss basic medication administration guidelines, how to properly handle and store medications, and proper documentation of the administration of medication.

Date: Monday, Nov. 6, 2017

Time: 9 a.m.–12 p.m.

Location: OSSE, 810 First St. NE, Ninth Floor, Room 9014, Washington, DC 20002

Register by web: bit.ly/2wO6vz3

Sponsor(s): Children's National Health System

Audience: All infant, toddler and preschool teachers, assistant teachers, and directors

Core Knowledge Area: Health, Safety, and Nutrition

Nov

4

Introduction to the Family Child Care Environment Rating Scale-Revised (FCCERS-R) **NEW!**

Units/Clock Hours:

6 Professional Learning Units

Description: This training provides an introduction to the FCCERS-R. During this training participants will learn how the FCCERS-R measures quality and what the research tells us about the scale scores. The participants will learn how to assess family child care programs for children from infancy through school-age using the FCCERS-R.

Date: Saturday, Nov. 4, 2017

Time: 9 a.m.–4 p.m.

Location: Kellogg Conference Center at Gallaudet University, 800 Florida Ave. NE, Washington, DC 20002

Register by Web: bit.ly/2y3Xh28

Sponsor(s): The Bainum Family Foundation

Audience: Family home care providers, quality facilitators, coaches, and technical assistants

Core Knowledge Area: Observing, Documenting, and Assessing to Support Young Children and Families; Program Management: Operation and Evaluation

Nov

7

Stewards of Children: Child Sexual Abuse Prevention*

Units/Clock Hours:

2 Professional Learning Units

CCDBG Topic: Recognition and reporting child abuse and neglect

Description: This training teaches participants how to prevent, recognize and react responsibly to child sexual abuse. The training includes discussion about critical issues in sexual abuse prevention and the relevance of these issues in our communities. Participants will leave with practical skills they can use daily, and knowledge of ways their program can implement policies to proactively reduce the risk of child sexual abuse.

Date: Tuesday, Nov. 7, 2017

Time: 10 a.m.–12 p.m.

Location: Safe Shores, 429 O St. NW, Washington, DC, 20001

Register by web: safeshores.org/stewards-of-children.html or email stewards@safeshores.org

Sponsor(s): Safe Shores – The DC Children's Advocacy Center

Audience: Teachers, assistant teachers, administrators, and program support staff

Core Knowledge Area: Health, Safety, and Nutrition

Nov

7

Understanding the Signs of Perinatal Mood and Anxiety Disorder**Units/Clock Hours:**

2 Professional Learning Units

Description: This training is for anyone who works in any capacity with pregnant, post-partum and reproductive age women and their families. Come and learn about the major risk factors for Perinatal Mood and Anxiety Disorders, as well as the different ways that they present in the general population. You will learn how to screen, where and how to refer a mother or family, if needed and what other resources are available in the District for families of various cultures. Families, and most especially children, benefit greatly from knowledgeable professionals that are equipped to identify and refer when the symptoms and risks of anxiety and depression are evident.

Date: Tuesday, Nov. 7, 2017

Time: 10 a.m.-12 p.m.

Location: DC Child Care Connections, 209 Upshur St. NW, Third Floor, Washington, DC 20011

Register by web: bit.ly/2hrRjRC

Sponsor(s): Mary's Center

Audience: Teachers, early childhood mental health consultants, family social workers, family support workers, and early Intervention service coordinators

Core Knowledge Area: Social Emotional Development and Mental Health

Nov

8

Starting Strong: Nutrition for Infants and Toddlers***Units/Clock Hours:**

2.5 Professional Learning Units

CCDBG Topic: Child development

Description: This session will help participants better understand developmental readiness for introducing solid foods to infants and the process of transitioning to table foods. Participants will also be provided with ways to promote good nutrition that will prepare children for a lifetime of growing and learning. This two clock hour training will also cover the Child and Adult Care Food Program (CACFP) infant meal pattern and feeding guidelines, which all licensed providers are required to follow.

Date: Wednesday, Nov. 8, 2017

Time: 9:30 a.m.-12 p.m.

Location: OSSE, 810 First St. NE, Fifth Floor, 5002, Washington, DC 20002

Register by Web: bit.ly/2hsRIJ0

Sponsor(s): OSSE – Wellness and Nutrition

Audience: Infant, Toddler, Pre-k, Teachers, Administrators

Core Knowledge Area: Child Growth and Development; Health, Safety, and Nutrition

Nov

7

Food Allergy Prevention and Response***Units/Clock Hours:**

2 Professional Learning Units

CCDBG Topic: Prevention/response to emergencies due to food and other allergic reactions

Description: This training will explore the food allergy procedures that should be in place when caring for children in early care and preschool settings according to research-based, Department of Health, Centers for Disease Control and Prevention (CDC) guidelines, and the rights of children with food allergies. Participants will be able to define anaphylaxis, identify common food allergies and their signs and symptoms, outline treatment and management options, learn how to create and follow individual care plans for each child with a food allergy, create and implement a detailed treatment plan in the event of an allergic reaction, and apply and understand best practices for minimizing risks and exposure.

Date: Tuesday, Nov. 7, 2017

Time: 2-4 p.m.

Location: OSSE, 810 First St. NE, Fourth Floor, Room 4012, Washington, DC 20002

Register by Web: bit.ly/2wSkU8G

Sponsor(s): OSSE Wellness and Nutrition

Audience: Teachers, assistant teachers, childcare providers and after school staff

Core Knowledge Area: Health, Safety, and Nutrition

Nov

8

The Period of Purple Crying***Units/Clock Hours:**

1 Professional Learning Unit

CCDBG Topic: Prevention of shaken baby syndrome, abusive head trauma and child maltreatment

Description: This training will introduce the Shaken Baby Syndrome/Abusive Head Trauma and infant abuse prevention. This session will include discussion about common injuries, coping mechanisms, and a simulation of injuries that could result when a baby is shaken.

Date: Wednesday, Nov 8, 2017

Time: 11 a.m.-12 p.m.

Location: Children's National Medical Center, 111 Michigan Ave. NW, Goldberg Center, Floor 1.5, Conference Room, Washington, DC 20010

Register by web: bit.ly/2xGgpCk

Sponsor(s): Children's National Health System

Audience: Teachers, assistant teachers, child care providers, substitutes, directors, parents, nurses, physicians, social workers, and family support staff

Core Knowledge Area: Child Growth and Development; Health, Safety, and Nutrition

Nov

9

Community Emergency Response Team (CERT) Training***Units/Clock Hours:**

6 Professional Learning Units

CCDBG Topic: Emergency preparedness and response planning for emergencies

Description: This course teaches basic disaster response skills, fire safety, light search and rescue, CERT team organization, disaster psychology, terrorism awareness, and disaster medical operations.

Date: Thursday, Nov. 9, 2017

Time: 9 a.m.-4 p.m.

Location: Frank D. Reeves Center of Municipal Affairs, 2000 14th St. NW, Suite 101, Washington, DC 20009

Register by Web: bit.ly/2fm8XSi

Sponsor(s): Serve DC

Audience: All caregivers, teachers, assistant teachers, and directors

Core Knowledge Area: Health, Safety, and Nutrition

Nov

9

Toy Stories: Promoting Early Childhood Math Skills Through the Art of Storytelling (Part 1) NEW!**Units/Clock Hours:**

2 Professional Learning Units

Description: During this workshop, participants will learn the storyteller's art of creating voices, facial expressions, and gestures that bring a story to life. Participants will learn how to animate small toys and simple objects while telling a story. As the storytelling unfolds, the mathematical concept that underlies the story is revealed. The participants will learn how to help children map the story's sequence and demonstrate an understanding of the math concept. Participants will learn to tell *Moving Through Math* toy stories that introduce early childhood math concepts.

Date: Thursday, November 9, 2017

Time: 12-2:30 p.m.

Location: Matthews Memorial Baptist Church, 2616 Martin Luther King Jr. Ave. SE, Washington, DC 20020

Register by Web: innercity-innerchild.org/naptime-u-registration or (202) 965-2000 ext. 104

Sponsor(s): Inner City-Inner Child

Audience: Teachers, assistant teachers, and directors

Core Knowledge Area: Curriculum

Nov

9

Nutrition for Early Learners***Units/Clock Hours:**

2.5 Professional Learning Units

CCDBG Topic: Child development

Description: Good nutrition is a key for supporting healthy development and preparing children for school. This training session will teach you the basics of good nutrition for toddlers and preschoolers as well as planning and preparing nutritious meals with a focus on meeting the Child and Adult Care Food Program (CACFP) meal pattern requirements, which all licensed providers are required to follow. This training will also cover best practices for creating positive meal times and implementing family-style meal service.

Date: Thursday, Nov. 9, 2017

Time: 9:30 a.m.-12 p.m.

Location: OSSE, 810 First St. NE, Fourth Floor, Room 4002, Washington, DC, 20002

Register by web: bit.ly/2xtIH10

Sponsor(s): OSSE – Wellness and Nutrition

Audience: All caregivers, teachers, assistant teachers, and directors

Core Knowledge Area: Health, Safety, and Nutrition

Nov

9

WETA Kids Ready To Learn**Units/Clock Hours:**

1.5 Professional Learning Units

Description: This high-impact session will prepare early childhood educators to nurture a child's natural curiosity and love of learning. Participants will learn to use the appeal and learning goals of PBS KIDS programs, such as Sesame Street and Clifford, to enhance the literacy skills and prepare young children for success in school. The participants will be introduced to 2- 5 new children's books and will receive one of the featured books to add to their classroom library.

Date: Thursday, November 9, 2017

Time: 1-2:30 p.m.

Location: OSSE, 810 First St. NE, Third Floor Grand Hall Side A, Washington, DC 20002

Register by Web: bit.ly/2xsbANc

Sponsor(s): WETA

Audience: Teachers, assistant teachers, childcare providers, and after school staff

Core Knowledge Area: Curriculum

Nov

13

Emergency Preparedness***Units/Clock Hours:**

2. Professional Learning Units

CCDBG Topic: Emergency preparedness and response planning for emergencies

Description: Being prepared for emergencies can make a big difference as to whether or not the children in your care and the staff in your program remain safe. In this course, participants will learn about the necessary steps a program should take to ensure preparedness in the event of an emergency, as well as effective strategies to communicate the emergency plan to children, parents, and staff.

Date: Monday, November 13, 2017

Time: 9-11 a.m.

Location: DC Child Care Connections, 209 Upshur St. NW, Third Floor, Washington, DC 20011

Register by Web: bit.ly/2hvUSIV

Sponsor(s): Emergency Medical Services for Children

Audience: Teachers, assistant teachers, and directors

Core Knowledge Area: Health, Safety, and Nutrition

Nov

15

Trauma and Resilience***Units/Clock Hours:**

3 Professional Learning Units

CCDBG Topic: Child development

Description: In this workshop participants learn how trauma can affect a child's developing brain. During the training the participants will learn how to identify signs of trauma and how to foster resilience in children, so they can develop into emotionally strong adults. How to access local early childhood mental health resources will be discussed.

Date: Wednesday, Nov. 15, 2017

Time: 1-4 p.m.

Location: OSSE, 810 First St. NE, Eighth Floor, 806, Washington, DC 20002

Register by Web: bit.ly/2wh2UW3

Sponsor(s): DCPS Early Stages

Audience: Teachers, assistant teachers, early childhood mental health consultants, family social workers, family support workers, and early intervention service coordinators

Core Knowledge Area: Social Emotional Development and Mental Health, and Child Growth and Development

Nov

15

Children and Fires, Fire Extinguisher Training and Storage of Hazardous Materials***Units/Clock Hours:**

3 Professional Learning Units

CCDBG Topic: Handling and storage of hazardous materials and the disposal of bio contaminants

Description: During this hands-on session participants will learn how to properly use and store toxic substances in child care settings. Participants will also learn the parts and function of a fire extinguisher, basic characteristics of children who show interest in fire and how to refer a child to the juvenile fire-setter program.

Date: Wednesday, Nov. 15, 2017

Time: 1-4 p.m.

Location: Fire & EMS Department, 1100 4th St. SW, Suite E-700, Washington, DC 20024

Register by email: aleazor.taylor@dc.gov

Sponsor(s): DC Fire & EMS Department

Audience: Teachers, assistant teachers, administrators, and program support staff

Core Knowledge Area: Health, Safety, and Nutrition

Nov

16

Toy Stories: Promoting Early Childhood Math Skills Through Storytelling (Part 2)**Units/Clock Hours:**

2 Professional Learning Units

Description: During this workshop participants will learn the storyteller's art of creating voices, facial expressions, and gestures that bring a story to life. Participants will learn how to animate small toys and simple objects while leading children in the telling of a story. As the storytelling unfolds, the mathematical concept that underlies the story is revealed. The participants will learn how to help children map the story's sequence and demonstrate understanding of the math concept. Participants will learn to tell Moving Through Math toy stories that introduce early childhood math concepts.

Date: Thursday, November 16, 2017

Time: 12-2:30 p.m.

Location: Matthews Memorial Baptist Church, 2616 Martin Luther King Jr. Ave. SE, Washington, DC 20020

Register by Web: innercity-innerchild.org/naptime-u-registration or by phone: 202-965-2000 x 104

Sponsor(s): Inner City-Inner Child

Audience: Teachers, assistant teachers, and directors

Core Knowledge Area: Curriculum

Nov

18

**Director's Corner:
Networking Strategies NEW!****Units/Clock Hours:**

1 Professional Learning Units

Description: This will provide participants with strategies to connect with people, build casual acquaintances into real connections, and leverage social media to increase their range of influence in the community. Participants will learn ways to build communication channels and expand their community network to increase opportunities for their business to grow.

Date: Saturday, Nov. 18, 2017

Time: 9:30-10:30 a.m.

Location: DC Child Care Connections, 209 Upshur St. NW, Third Floor, Washington, DC 20011

Register by web: bit.ly/2y6ENxS

Sponsor(s): Kids Comprehensive Services, LLC

Audience: Directors and administrators

Core Knowledge Area: Program Management: Operation and Evaluation

Nov

20

**Precaution in Transporting Children
and Pedestrian and Bike Safety*****Units/Clock Hours:**

2 Professional Learning Units

CCDBG Topic: Appropriate precautions in transporting children

Description: This course provides basic knowledge of transportation regulations, and includes a demonstration on how to properly conduct a vehicle passenger check, the use of child safety restraints required by District law, proper loading, unloading, and monitoring of children. Participants will learn where to find vehicular first aid supplies, and how to conduct emergency procedures and response in the event of accidents or breakdowns. During this session, participants will learn how to prevent avoidable bike and pedestrian injuries at school and at play, the safest places to walk and ride a bike, and the proper way to fit helmets.

Date: Monday, Nov. 20, 2017

Time: 10 a.m.-12 p.m.

Location: OSSE 810 First St. NE, Room 9014, Washington, DC 20002

Register by web: bit.ly/2xCDTro

Sponsor(s): DC Department of Transportation, Safe Kids DC Children's National Medical System

Audience: All infant, toddler and preschool teachers, assistant teachers, and directors who provide transportation of any kind (before and after school, field trips, playground, etc.)

Core Knowledge Area: Health, Safety, and Nutrition

Nov

18

**Community Outreach
and Public Relations NEW!****Units/Clock Hours:**

2 Professional Learning Units

Description: This training will introduce administrators to a variety of public relations tools and strategies to promote positive relationships within the community. Participants will gain a better understanding of how to network to maximize community resources and fill the gap to ensure children and families have the resources they need. The session will include exercises on how to identify organizations, build partnerships, define roles, and maintain positive relationships. The participants will develop a plan to build a network of collaboration to work effectively within the community.

Date: Saturday, Nov. 18, 2017

Time: 11 a.m.-1 p.m.

Location: DC Child Care Connections, 209 Upshur St. NW, Third Floor, Washington, DC 20011

Register by web: bit.ly/2wjg9p8

Sponsor(s): Kids Comprehensive Services, LLC

Audience: Directors and administrators

Core Knowledge Area: Program Management: Operation and Evaluation

Nov

20

Addressing Challenging Behaviors**Units/Clock Hours:**

3 Professional Learning Units

CCDBG Topic: Child Development

Description: This workshop uses information and materials from the Center on the Social and Emotional Foundations for Early Learning to help teachers and child care professionals understand why children behave the way they do. It will help teachers and other child care professionals develop universal strategies to address behavior, as well as target intervention strategies.

Date: Monday, Nov. 20, 2017

Time: 9:30 a.m.-12:30 p.m.

Location: DC Child Care Connections, 209 Upshur St. NW, Third Floor, Washington, DC 20011

Register by web: bit.ly/2fIUWlx

Sponsor(s): Early Stages, DCPS

Audience: Teachers and assistant teachers for children 3-5 years old.

Core Knowledge Area: Social-Emotional Development and Mental Health, and Child Growth and Development (before and after school, field trips, playground, etc.)

Core Knowledge Area: Health, Safety, and Nutrition

Nov

28

Infant Safe Sleep Practices***Units/Clock Hours:**

2 Professional Learning Units

CCDBG Topic: Prevention of sudden infant death syndrome (SIDS) and use of safe sleep practices

Description: Participants in this course will identify behaviors that increase the risk of SIDS and sleep related infant deaths, learn ways to reduce the risk of SIDS in child care settings, and learn how to communicate with parents and other caregivers about safe sleep practices. This course reflects the American Academy of Pediatrics' revised recommendations for a safe sleep environment.

Date: Tuesday, Nov. 28, 2017

Time: 10 a.m.-12 p.m.

Location: Department of Health, 899 North Capitol St. NE, 3rd Floor, Washington, DC 20002

Register by web: bit.ly/2y68m2r

Sponsor(s): DC Department of Health, Community Health Administration

Audience: Teachers, assistant teachers, and care givers

Core Knowledge Area: Health, Safety, and Nutrition

Nov

30

Stewards of Children: Child Sexual Abuse Prevention***Units/Clock Hours:**

2 Professional Learning Units

CCDBG Topic: Recognition and reporting child abuse and neglect

Description: This training teaches participants how to prevent, recognize and react responsibly to child sexual abuse. The training includes discussion about critical issues in sexual abuse prevention and the relevance of these issues in our communities. Participants will leave with practical skills they can use daily, and knowledge of ways their program can implement policies to proactively reduce the risk of child sexual abuse.

Date: Thursday, Nov. 30, 2017

Time: 3-5 p.m.

Location: Safe Shores, 429 O St. NW, Washington, DC, 20001

Register by web: safeshores.org/stewards-of-children.html or email stewards@safeshores.org

Sponsor(s): Safe Shores – The DC Children's Advocacy Center

Audience: Teachers, administrators, and program support staff

Core Knowledge Area: Health, Safety, and Nutrition

Nov

30

How to Prevent and Control Infectious Diseases***Units/Clock Hours:**

2.5 Professional Learning Units

CCDBG Topic: Prevention and control of infectious diseases (including immunization)

Description: This session will provide an overview on how to prevent and control infectious diseases, including information on immunizations and influenza.

Date: Thursday, Nov. 30, 2017

Time: 1-3:30 p.m.

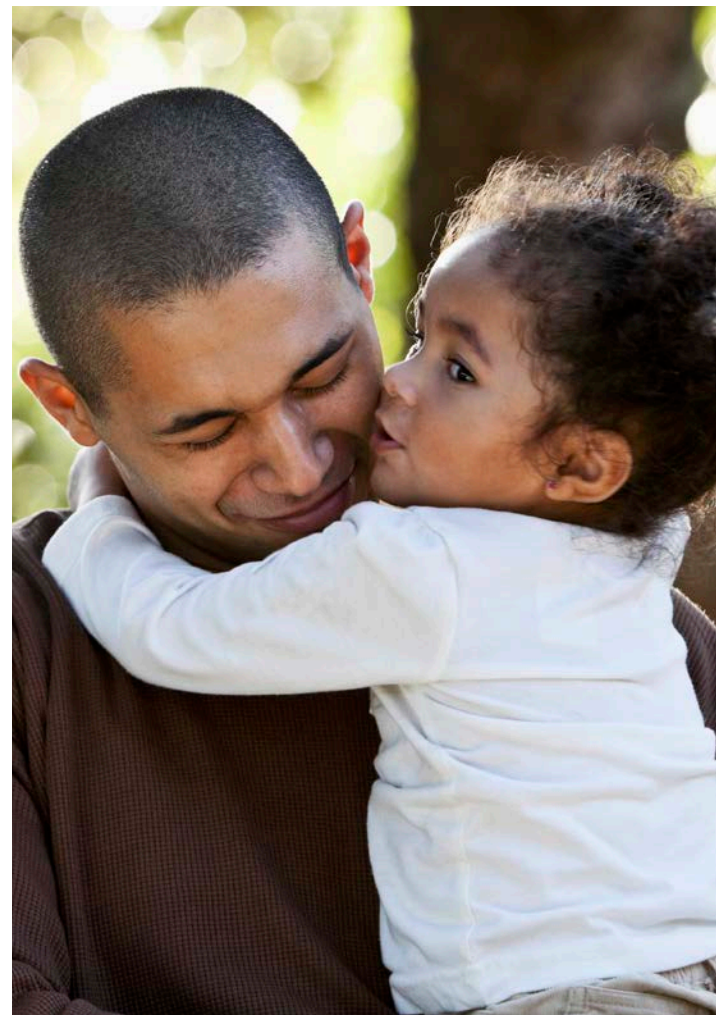
Location: DC Child Care Connections, 209 Upshur St. NW, Third Floor, Washington, DC 20011

Register by Web: bit.ly/2xCQAIZ

Sponsor(s): Children's National Health System

Audience: Infant-toddler and preschool teachers, assistant teachers, and directors

Core Knowledge Area: Health, Safety, and Nutrition



NOW AVAILABLE!



Early Childhood Share DC

The one-stop resource for early childhood professionals in the District of Columbia

www.ecsharedc.org

Early Childhood Share DC helps early learning providers save time, reduce costs, increase quality and share knowledge. The site features more than 1,200 classroom and administration resources, such as:

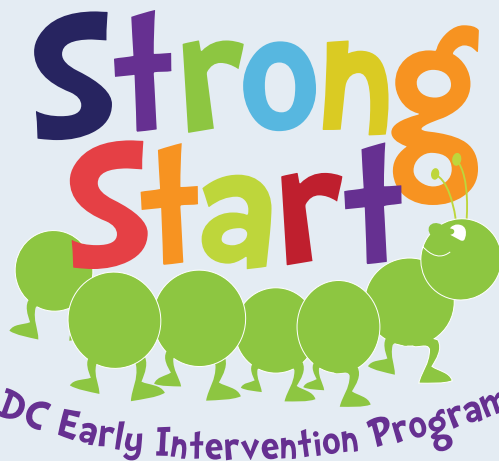
- Resources for business operations, insurance, family engagement, health, handbooks and more
- Curriculum ideas and classroom materials
- HR tools, templates, forms and policies
- Discounts at leading vendors and retailers
- Direct links to key forms and websites

The site is available **FREE** to all licensed providers in the District.

DON'T DELAY – REGISTER TODAY!



Early Childhood Share DC is sponsored by the Bainum Family Foundation in collaboration with the Office of the State Superintendent of Education (OSSE).



Open to children ages 6 mos. - 3 yrs. • Free to residents of DC • Pre-registration is required

Playgroups are available Monday - Thursday and on selected Saturdays throughout the year across seven different locations within the Washington, DC area.

2017 Strong Start Play Group Schedule

DAY	LOCATION	SESSION(S) (in months)
MONDAY	TENLEY-FRIENDSHIP LIBRARY 4450 Wisconsin Ave. NW – across from the Tenley Metro Station	12 – 24: 10 – 11 a.m. 24 – 36: 11 – 12 p.m.
	COLUMBIA HEIGHTS 1371 Harvard St. NW – on the corner of 14 th St. and Harvard St.	12 – 24: 10 – 11 a.m. 6 – 12: 11:30 a.m. – 12:15 p.m.
TUESDAY	ANACOSTIA NEIGHBORHOOD LIBRARY 1800 Good Hope Rd. SE	24 – 36: 10 – 11 a.m. 12 – 24: 11 a.m. – 12 p.m.
	SOUTHWEST LIBRARY 900 Wesley Pl. SW	24 – 36: 10 – 11 p.m. 12 – 24: 11:15 a.m. – 12:15 p.m.
	COLUMBIA HEIGHTS 1371 Harvard St. NW – on the corner of 14 th St. and Harvard St.	24 – 36: 12:30 p.m. – 1:30 p.m. (Bilingual)
WEDNESDAY	HILL CENTER AT THE OLD NAVAL HOSPITAL 921 Pennsylvania Ave. SE	24 – 36: 9 – 10:15 a.m. 12 – 24: 10:30 – 11:30 a.m. 6 – 12: 11:45 a.m. – 12:30 p.m.
	COLUMBIA HEIGHTS 1371 Harvard St. NW – on the corner of 14 th St. and Harvard St.	24 – 36: 10 – 11:00 a.m. 12 – 24: 11:15 a.m. – 12:15 p.m.
FRIDAY	COLUMBIA HEIGHTS (2x/month Spanish) (FUTURE) 1371 Harvard St. NW – on the corner of 14 th St. and Harvard St	TBD
SATURDAY	TBD	TBD

For more information, contact: Christopher.Chapman@dc.gov | (202) 741-0792 (office) | (202) 213-7002 (mobile)

DECEMBER AT-A-GLANCE

Dec 1	Certified Trainer Approval Program Training of Trainers
Dec 4	Emergency Preparedness*
Dec 5	Community Emergency Response Team (CERT) Training*
Dec 5	Infant Sleep Practices*
Dec 6	Building and Physical Premises Safety*
Dec 7	Starting Strong: Nutrition for Infants and Toddlers*
Dec 8	Nutrition for Early Learners*
Dec 9	Director's Corner: Promoting Peak Performance NEW!
Dec 9	Data Basics: Using Data to Enhance Everyday Classroom Practices
Dec 11	Addressing Challenging Behaviors
Dec 11	Precautions in Transporting Children and Pedestrian and Bike Safety*
Dec 12	Certified Trainer Approval Program Information Session
Dec 13	The Period of Purple Crying*
Dec 13	Children and Fires, Fire Extinguisher Training and Storage of Hazardous Materials*
Dec 14	How to Prevent and Control Infectious Diseases*
Dec 15	Acontecimientos importantes del desarrollo de 3 a 5 años (español) (Developmental Milestones for ages 3 -5 years in Spanish)

* Denotes a required health and safety course

DECEMBER OFFERINGS

Dec

1

Certified Trainer Approval Program: Training of-Trainers

Units/Clock Hours:
2.5 Professional Learning Units

Description: During this session new trainers will gain a strong foundation in critical training skills, and seasoned trainers will be introduced to new approaches for delivering powerful training. At the end of the course, participants will have an understanding of the basics of adult learning, be able to identify training needs, design an effective training session and ensure proper follow-up. If your goal is to deliver a high-quality training session and project credibility in your delivery, you will find this Training-of-Trainers course an invaluable resource.

Date: Friday, Dec. 1, 2017

Time: 10 a.m.-12:30 p.m. or 1:30-4 p.m.

Location: Matthews Memorial Baptist Church, 2616 Martin Luther King Jr, Ave. SE, Washington, DC 20020

Register by Web: bit.ly/2yqOhQQ

Sponsor(s): ICF Early Education Institute

Audience: Certified trainers (current and perspective), educational coordinators, and technical assistants

Core Knowledge Area: Professionalism and Advocacy

Dec

5

Community Emergency Response Team (CERT) Training*

Units/Clock Hours:
6 Professional Learning Units

CCDBG Topic: Emergency preparedness and response planning for emergencies

Description: This course teaches basic disaster response skills, fire safety, light search and rescue, CERT team organization, disaster psychology, terrorism awareness, and disaster medical operations.

Date: Tuesday Dec. 5, 2017

Time: 9 a.m.-4 p.m.

Location: Frank D. Reeves Center of Municipal Affairs, 2000 14th St. NW, Suite 101, Washington, DC 20009

Register by Web: bit.ly/2wi3brP

Sponsor(s): Serve DC

Audience: All caregivers, teachers, assistant teachers, and directors

Core Knowledge Area: Health, Safety, and Nutrition

Dec

4

Emergency Preparedness*

Units/Clock Hours:
2 Professional Learning Units

CCDBG Topic: Emergency preparedness and response planning for emergencies

Description: Being prepared for emergencies can make a big difference as to whether or not the children in your care and the staff in your program remain safe. In this course, participants will learn about the necessary steps a program should take to ensure preparedness in the event of an emergency, as well as effective strategies to communicate the emergency plan to children, parents, and staff.

Date: Monday Dec. 4, 2017

Time: 9-11 a.m.

Location: DC Child Care Connections, 209 Upshur St. NW, Third Floor, Washington, DC 20011

Register by Web: bit.ly/2xz6RHj

Sponsor(s): Emergency Medical Services for Children

Audience: Teachers, assistant teachers, and directors

Core Knowledge Area: Health, Safety, and Nutrition

Dec

5

Infant Safe Sleep Practices*

Units/Clock Hours:
2 Professional Learning Units

CCDBG Topic: Prevention of sudden infant death syndrome (SIDS) and use of safe sleep practices

Description: Participants in this course will identify behaviors that increase the risk of SIDS and sleep related infant deaths, learn ways to reduce the risk of SIDS in child care settings, and learn how to communicate with parents and other caregivers about safe sleep practices. This course reflects the American Academy of Pediatrics' revised recommendations for a safe sleep environment.

Date: Tuesday, Dec. 5, 2017

Time: 10 a.m.-12 p.m.

Location: DC Child Care Connections, 209 Upshur St. NW, Third Floor, Washington, DC 20011

Register by web: bit.ly/2wRbBuB

Sponsor(s): ICF Early Education Institute

Audience: Teachers, assistant teachers, and care givers

Core Knowledge Area: Health, Safety, and Nutrition

Dec

6

Building and Physical Premises Safety***Units/Clock Hours:**

2 Professional Learning Units

CCDBG Topic: Building and physical premises safety

Description: In this training participants will explore ways to plan, practice and promote safety in their early learning environments. The participants will discuss keeping children safe, away from poison hazards, choking and suffocation. This training will review three essential components of keeping children safe: education, supervision and environment.

Date: Wednesday, Dec. 6, 2017**Time:** 10 a.m.–12 p.m.**Location:** DC Child Care Connections, 209 Upshur Street, NW Third Floor, Washington, DC 20011**Register by web:** bit.ly/2xDMV7B**Sponsor(s):** Kids Comprehensive Services**Audience:** Infant, toddler and preschool teachers, assistant teachers, and directors**Core Knowledge Area:** Health, Safety, and Nutrition

Dec

8

Nutrition for Early Learners***Units/Clock Hours:**

2.5 Professional Learning Units

CCDBG Topic: Child development

Description: Good nutrition is a key for supporting healthy development and preparing children for school. This training session will teach you the basics of good nutrition for toddlers and preschoolers as well as planning and preparing nutritious meals with a focus on meeting the Child and Adult Care Food Program (CACFP) meal pattern requirements, which all licensed providers are required to follow. This training will also cover best practices for creating positive meal times and implementing family-style meal service.

Date: Friday, Dec. 8, 2017**Time:** 9:30 a.m.–12 p.m.**Location:** DC Child Care Connections, 209 Upshur St. NW, Third Floor, Washington, DC 20011**Register by Web:** bit.ly/2k0zERT**Sponsor(s):** OSSE – Wellness and Nutrition**Audience:** All caregivers, teachers, assistant teachers, and directors**Core Knowledge Area:** Health, Safety, Nutrition, and Child Development

Dec

7

Starting Strong: Nutrition for Infants and Toddlers***Units/Clock Hours:**

2.5 Professional Learning Units

CCDBG Topic: Child development

Description: This session will help participants better understand developmental readiness for introducing solid foods to infants and the process of transitioning to table foods. Participants will also be provided with ways to promote good nutrition that will prepare children for a lifetime of growing and learning. This two clock hour training will also cover the Child and Adult Care Food Program (CACFP) infant meal pattern and feeding guidelines, which all licensed providers are required to follow.

Date: Thursday, Dec. 7, 2017**Time:** 9:30 a.m.–12 p.m.**Location:** DC Child Care Connections, 209 Upshur St. NW, Third Floor, Washington, DC 20011**Register by Web:** bit.ly/2fontJn**Sponsor(s):** OSSE – Wellness and Nutrition**Audience:** Infant, toddler teachers, and directors**Core Knowledge Area:** Health, Safety, and Nutrition

Dec

9

Director's Corner: Promoting Peak Performance **NEW!****Units/Clock Hours:**

1 Professional Learning Unit

Description: Promoting ongoing professional development is the key to creating a strength-based team. The conversation will be based on the importance of directors and administrators modifying their supervisory style and developing professional development strategies based on individual staff needs. The participants will also identify ways to assist staff in creating professional development plans to support their positive growth.

Date: Saturday, Dec. 9, 2017**Time:** 9:30-10:30 a.m.**Location:** DC Child Care Connections, 209 Upshur St. NW, Third Floor, Washington, DC 20011**Register by Web:** bit.ly/2jYOOHk**Sponsor(s):** Kids Comprehensive Services, LLC**Audience:** Directors and administrators**Core Knowledge Area:** Program Management: Operation and Evaluation

Dec

9

Data Basics: Using Data to Enhance Everyday Classroom Practices**Units/Clock Hours:**

3 Professional Learning Units

Description: This training will provide directors and early childhood program administrators with best practices on how to use data for continuous quality improvement efforts. Participants will learn to use individual, classroom or school-wide level data to improve child outcomes and plan for professional development.

Date: Saturday, Dec. 9, 2017

Time: 10:30 a.m.–1:30 p.m.

Location: Educare DC, 640 Anacostia Ave. NE, Washington, DC 20019

Register by web: bit.ly/2yraoGz

Sponsor(s): Kids Comprehensive Services, LLC, Educare

Audience: Directors and administrators

Core Knowledge Area: Program Management: Operation and Evaluation

Dec

11

Precaution in Transporting Children and Pedestrian and Bike Safety***Units/Clock Hours:**

2 Professional Learning Units

CCDBG Topic: Appropriate precautions in transporting children

Description: This course provides basic knowledge of transportation regulations, and includes a demonstration on how to properly conduct a vehicle passenger check, the use of child safety restraints required by District law, proper loading, unloading, and monitoring of children. Participants will learn where to find vehicular first aid supplies, and how to conduct emergency procedures and response in the event of accidents or breakdowns. During this session, participants will learn how to prevent avoidable bike and pedestrian injuries at school and at play, the safest places to walk and ride a bike, and the proper way to fit helmets.

Date: Monday, Dec. 11, 2017

Time: 1-3 p.m.

Location: DC Child Care Connections, 209 Upshur, Street NW Third Floor, Washington, DC 20011

Register by web: bit.ly/2xD2Pz0

Sponsor(s): DC Department of Transportation, Safe Kids DC Children's National Health System

Audience: All center staff who provide transportation

Core Knowledge Area: Health, Safety, and Nutrition

Dec

11

Addressing Challenging Behaviors**Units/Clock Hours:**

3 Professional Learning Units

CCDBG Topic: Child Development

Description: This workshop uses information and materials from the Center on the Social and Emotional Foundations for Early Learning to help teachers and child care professionals understand why children behave the way they do. It will help teachers and other child care professionals develop universal strategies to address behavior, as well as target intervention strategies.

Date: Monday, Dec. 11, 2017

Time: 9:30 a.m.–12:30 p.m.

Location: DC Child Care Connections, 209 Upshur Street, NW Third Floor, Washington, DC 20011

Register by Web: bit.ly/2hw4INK

Sponsor(s): Early Stages, DCPS

Audience: Teachers and assistant teachers for children 3-5 years old.

Core Knowledge Area: Social-Emotional Development and Mental Health

Dec

12

Certified Trainer Approval Program: Information Session**Units/Clock Hours:**

2.5 Professional Learning Units

Description: During this training OSSE Division of Early Learning and Kids Comprehensive Services will provide an overview of the DEL Certified Training process. If you are interested in applying to become a certified trainer, or need information about your current certification please plan to attend.

Date: Tuesday, Dec. 12, 2017

Time: 10 a.m.-12:30 p.m. or 1:30-4 p.m.

Location: Matthews Memorial Baptist Church, 2616 Martin Luther King Jr, Ave SE, Washington, DC 20020

Register by Web: <http://bit.ly/2fPAsV7>

Sponsor(s): Kids Comprehensive Services

Audience: Certified trainers (current and perspective), educational coordinators, and technical assistants

Core Knowledge Area: Professionalism and Advocacy

Dec

13

The Period of Purple Crying***Units/Clock Hours:**

1 Professional Learning Unit

CCDBG Topic: Prevention of shaken baby syndrome, abusive head trauma and child maltreatment

Description: This training will introduce the Shaken Baby Syndrome/Abusive Head Trauma and infant abuse prevention. This session will include discussion about common injuries, coping mechanisms, and a simulation of injuries that could result when a baby is shaken.

Date: Wednesday, December 13, 2017

Time: 11 a.m.-12 p.m.

Location: Children's National Medical Center, 111 Michigan Ave. NW, Goldberg Center, Floor 1.5, Conference Room, Washington, DC 20010

Register by Web: bit.ly/2htWMHn

Sponsor(s): Children's National Health System

Audience: Teachers, assistant teachers, child care providers, substitutes, directors, parents, nurses, physicians, social workers, and family support staff

Core Knowledge Area: Child Growth and Development, and Health, Safety, and Nutrition

Dec

14

How to Prevent and Control Infectious Diseases***Units/Clock Hours:**

2 Professional Learning Units

CCDBG Topic: Prevention and control of infectious diseases

Description: This session will provide an overview on how to prevent and control infectious diseases, including information on immunizations and influenza.

Date: Thursday, Dec. 14, 2017

Time: 10 a.m.-12 p.m.

Location: DC Child Care Connections, 209 Upshur Street, NW Third Floor, Washington, DC 20011

Register by web: bit.ly/2fORsuq

Sponsor(s): Kids Comprehensive Services

Audience: All infant, toddler and preschool teachers, assistant teachers, and directors

Core Knowledge Area: Health, Safety, and Nutrition

Dec

13

Children and Fires, Fire Extinguisher Training and Storage of Hazardous Materials***Units/Clock Hours:**

3 Professional Learning Units

CCDBG Topic: Handling and storage of hazardous materials and the disposal of bio contaminants

Description: During this hands-on session participants will learn how to properly use and store toxic substances in child care settings. Participants will also learn the parts and function of a fire extinguisher, basic characteristics of children who show interest in fire and how to refer a child to the juvenile fire-setter program.

Date: Wednesday Dec. 13, 2017

Time: 1-4 p.m.

Location: Fire & EMS Department, 1100 4th St. SW, Suite E-700, Washington, DC 20024

Register by email: aleazor.taylor@dc.gov

Sponsor(s): DC Fire & EMS Department

Audience: Teachers, assistant teachers, administrators, program support staff

Core Knowledge Area: Health, Safety, and Nutrition

Dec

15

Acontecimientos importantes del desarrollo de 3 a 5 años (español) (Developmental Milestones for ages 3 -5 years in Spanish)**Unidades/reloj horas:**

2 unidades de aprendizaje profesionales

CCDBG tema: niño desarrollo

Descripción: Este taller ofrece un resumen de los hitos de desarrollo típicos para los niños entre las edades de tres y cinco en los ámbitos siguientes: comunicación, motor grueso, motor fino, socio-emocional y cognitivo. También ofrece estrategias de intervención de la muestra para cada dominio y la oportunidad para los participantes a crear sus propias estrategias de aula.

Fecha: 15 de Diciembre de 2017

Hora de viernes: 1-3 p.m.

Lugar: DC niño cuidado conexiones, 209 Upshur St. NW, tercer piso, Washington, DC 20011

Registrarse por Web: bit.ly/2wiBjUh

Patrocinadores: Inicios, DCPS y OSSE

Audiencia: maestros, profesores de asistente y directors

Online Training Options

The course offerings featured in this section are approved online training programs designed to meet the 12 CCDF Health and Safety Training requirements. Please note: Completion certificates are required and web-based courses may cost an additional fee.



On Demand Child Care Training

Featured module:

Health & Safety Basics: Requirements for Certification

Best practices and standards for health and safety are the foundation of quality child care. Meeting the basic health and safety needs of all children sets the stage for positive child outcomes. This health and safety orientation module provides an overview of the basic health and safety requirements and best practices in nine of the topic areas outlined in the Child Care and Development Block Grant (CCDBG) Reauthorization of 2015.



- Safe spaces
- Transportation safety
- Handling and storage of hazardous materials
- Emergency preparedness
- Prevention and control of infectious disease
- Food and allergic reactions and how to respond
- Administration of medication
- Shaken baby syndrome/abusive head trauma
- Safe sleep and SUIDS prevention

Eligible for CEUs
Accepted for CDA

Content for this On Demand professional development module is available at no cost. If a certificate of completion is needed or required, a \$15.00 fee is charged.

extension.psu.edu/youth/betterkidcare • 800-452-9108



Supported by funds from the Office of Child Development and Early Learning, jointly overseen by the Departments of Human Services and Education.

Penn State is an equal opportunity, affirmative action employer, and is committed to providing employment opportunities to all qualified applicants without regard to race, color, religion, age, sex, sexual orientation, gender identity, national origin, disability or protected veteran status.

Claudia C. Mincemoyer, Ph.D., Better Kid Care Program Director
2182 Sandy Drive – Suite 204 State College, PA 16803

This publication is available in alternative media on request.

© 2016 The Pennsylvania State University

AD_HealthSafetyBasics_DC



PRO SOLUTIONS

TRAINING

Has a business **solution** that's right for you!

ProSolutions Training is more than just **training!** Offering technology applications for state programs designed to meet **professional development** needs and to achieve professional excellence. ProSolutions Training is committed to ensuring that the youngest children have **brighter futures!**

COURSE DEVELOPMENT

- Convert existing classroom training to online modules or develop new courses
- Create interactive elements: quizzes, tests, example scenarios, videos
- Translate online modules into Spanish
- Develop, record and host custom webinars
- Create your own course and certification packages

END-USER EXPERIENCE

- Individual student transcripts, certificates and IACET-approved CEUs for successful course completion
- System-generated transcripts and certifications are available 24/7
- No need to hire additional IT staff - we provide telephone, email and online technical assistance

FEDERAL AND STATE REQUIREMENTS

- Collect and report data for regulatory and accrediting agencies
- Offer coursework required in the federal CCDBG requirements

CUSTOMIZED COURSE DELIVERY

- A web access portal branded with your logo and colors
- Host and manage online courses – yours or ours
- Standard and custom reporting on participants, registration, progress, testing, and outcomes

CALL OR EMAIL US TODAY To Discuss
THE PERFECT SOLUTION For Your Business!

E-COMMERCE TRACKING AND REPORTING HOSTING BLOGS
SKILL-BASED VIDEOGRAPHY CERTIFICATION
COURSE DEVELOPMENT INTERACTIVE TRANSCRIPTS

Powerful Training



Dedicated Educators



Brighter Futures for Children

Learn more about ProSolutions Training and what we have to offer. You'll see the difference.

800.939.9694 or visit prosolutionstraining.com



As a IACET Authorized Provider, ProSolutions Training offers CEUs for its programs that qualify under the ANSI/IACET Standard at no additional cost.

Early Educator Central:

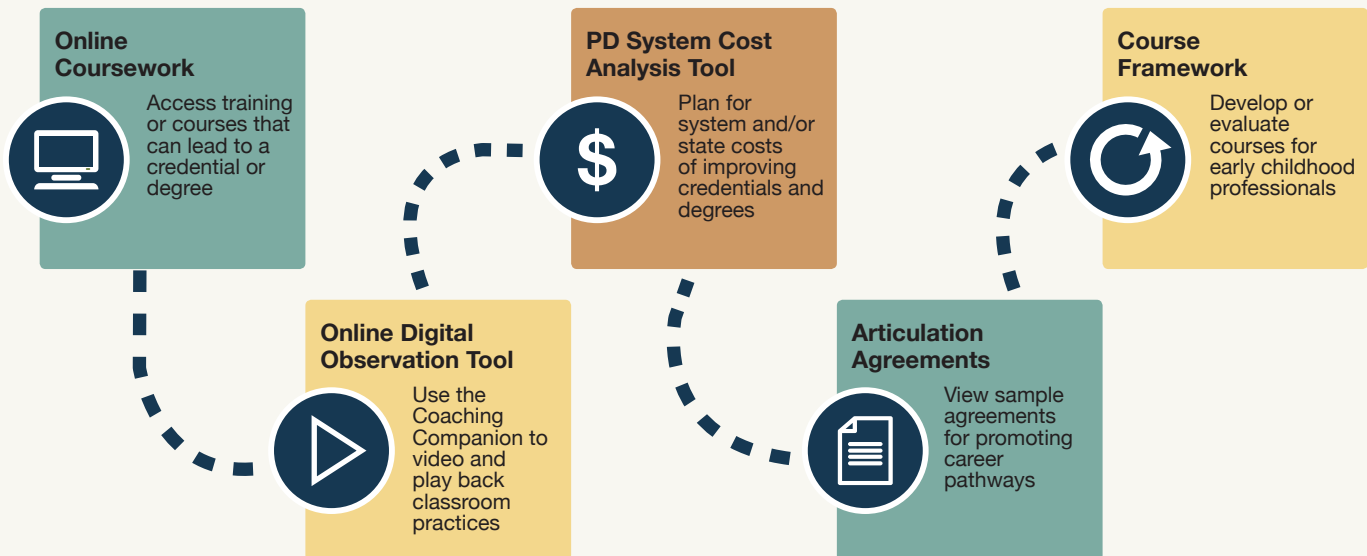
Pathways to Credentials and Degrees for Infant-Toddler Educators

No matter what your infant-toddler career pathway is, you'll find resources—organized by role—to help you build your competency and your impact. On track for a Child Development Associate (CDA) Credential™ for yourself? Looking to strengthen your skills as an administrator, coach, trainer, or consultant? Designing credit or non-credit coursework? Early Educator Central features essential tools for leaders, including a Professional Development (PD) System Cost Analysis Tool and model articulation agreements for use in higher education. Early Educator Central can help!

We have resources to help:



Our resources include:



Start Exploring Now!
Visit <https://earlyeducatorcentral.acf.hhs.gov>





Child and Family Services Agency

Online Mandated Reporter Training

ENGLISH/SPANISH

We all want every child in our city to grow up in safe and healthy families, yet the tragic fact is that thousands of our young people fall victim to abuse and neglect each year.

You can help. Your work gives you regular access to many children and youth, and an opportunity to play a critical role in protecting them. Mandated reporters are professionals obligated by law to report known or suspected incidents of child abuse and neglect. As a mandated reporter, you are part of the citywide safety net that provides life-saving interventions for vulnerable children and youth in our community.

This website provides the information you need to recognize the signs of abuse and neglect, and how to make a report. Thank you for taking time to work through this important training and for your invaluable partnership in looking out for the District's children and youth.

<https://dc.mandatedreporter.org/pages/Welcome.action>



MULTIHAZARD PLANNING FOR CHILDCARE

This online course, developed and provided by FEMA, covers the steps to help childcare providers prepare for incidents to ensure the safety of the children at their site. Childcare providers must have plans and procedures to keep children safe from everyday hazards and to respond and recover when an emergency happens.

The goal of this course is to provide childcare providers, of all sizes and with responsibility for children of all ages, with the knowledge and tools to analyze the hazards and threats at the site, to develop a plan to address these hazards and threats, and to implement processes to update and practice the emergency plan.

The topics addressed in this course include:

- Knowing your hazards.
- Developing a plan.
- Testing and updating your plan

This course culminates in a two-hour training certificate.

Register here: <http://1.usa.gov/1B9oKeJ>



FEMA



Every day you see them reach milestones.
There are free resources to help you spot a few more.

You spend your day working with, playing with, and watching children, and you are already familiar with many milestones — such as pointing at objects, smiling, and playing with others — that mark a child's development. All children are unique, but sooner or later, you will see a child who is not developing as they should. Free information on developmental milestones from 2 months to five years is available for child care providers and preschool teachers.

For **FREE** materials, visit www.cdc.gov/ActEarly
or call **1-800-CDC-INFO**.



Learn the Signs. Act Early.

ON-LINE TRAININGS

MULTIPLE OFFERINGS

Units/Clock Hours: Various

Core Knowledge Area: Various

Alignment: DC Common Core Early Learning Standards

Description: ChildCare Education Institute (CCEI) specializes in providing online training and certificates, child care registry development, and administrative solutions for the early care and education industry. As a leading distance training provider in child care, CCEI offers professionals 100+ online child care training courses in English and Spanish to meet licensing, recognition program, and Head Start requirements.

Time: Open Enrollment/ Self-paced

Register by Web: cceionline.com

Cost: varies

Sponsor(s): Child Care Education Institute

Audience: Teachers, administrators, before/after care, out-of-school time

MULTIPLE OFFERINGS

Units/Clock Hours: Various

Core Knowledge Area: Various

Alignment: DC Common Core Early Learning Standards

Description: Early Care Institute specializes in providing online training and certificates, child care registry development, and administrative solutions for the early care and education industry. As a leading distance training provider in child care, Early Care Institute offers courses to meet licensing, recognition program, and Head Start requirements.

Time: Open Enrollment/Self-paced

Register by Web: earlycareinstitute.com

Cost: varies

Sponsor(s): Childcare Management Solutions

Audience: Teachers, administrators, before/after care, out-of-school time

DC MANDATED REPORTER TRAINING

Units/Clock Hours: 2 Professional Learning Units

Core Knowledge Area: Professionalism and Advocacy

Alignment: Licensing

Description: This engaging training contains definitions, examples, and signs of child abuse and neglect, numerous links to resources and DC legal codes, helpful tips for mandated reporters, and interactive learning checks to confirm you learned important concepts.

Date: Online Virtual Training

Time: Open Enrollment/ Self-paced

Register by Web: dc.mandatedreporter.org/pages/Welcome.action

Cost: FREE

Sponsor(s): Child and Family Services Administration

Audience: Teachers, administrators, before/after care, out-of-school time

MULTIPLE OFFERINGS

Units/Clock Hours: Various

Core Knowledge Area: Various

Alignment: DC Common Core Early Learning Standards

Description: CYPHERWORX specializes in all online courses that are self-paced and interactive. Incorporating games and rich visuals so that our Out-of-School Time learners retain the information long after they have completed the course. Each of our courses comes with a Resource PDF that contains 3 download Learning Tasks Checklist, Course Information and Materials, and an Activity PDF. The full catalog includes hundreds of courses relevant to school-age childcare including a 36 course series with in-depth curriculum content, interactivity, and certificates.

Time: Open Enrollment/ Self-paced

Register by Web: ostpd.com

Cost: varies

Sponsor(s): CYPHERWORX

Audience: Out-of school time

WANT TO LEARN MORE?

Additional Professional Development Resources

Advocates for Justice: aje-dc.org

American Academy of Pediatrics (SIDS): wyostars.com/pdfs/aap_sids.pdf

Center for Disease Control and Prevention: cdc.gov

Council for Professional Recognition: cdacouncil.org/

Council for Exceptional Children: cec.sped.org/

DC Early Intervention: osse.dc.gov/service/strong-start-dc-early-intervention-program-dc-eip

Early Childhood Investigations Webinars: earlychildhoodwebinars.com

Early Childhood Training and Technical Assistance System: childcareta.acf.hhs.gov/ccdf-reauthorization

Early Educator Central: earlyeducatorcentral.acf.hhs.gov

Early Stages: earlystagesdc.org

Georgetown University Center for Continuing and Professional Education/Early Intervention: scs.georgetown.edu/programs_nc/CE0110/early-intervention?dID=5

Head Start Information Services: eclkc.ohs.acf.hhs.gov/hslc

Learn DC: learndc.org

National Association for the Education of Young Children: naeyc.org/

National Black Child Development Institute: nbcdi.org/

Save the Children: savethechildren.org

Sesame Street: sesamestreet.org/freeonlinecourse

Shaken Baby Syndrome: 3seconds.org/

Small Business Association (SBA): sba.gov/tools/sba-learning-center/search/training

US Consumer Product Safety Commission: cpsc.gov

Zero To Three: zerotothree.org/

Training Listed beyond this point are provided for a fee by OSSE Certified Trainers

Food Handler's Certification

Units/Clock Hours: 5 Professional Learning Units

Description: The goal of this certified professional food manager course is to provide the participant with a basic understanding of food safety and ensure that the participant learns to prepare and serve food safely. A food handler card confirms that the participant has demonstrated competence in knowing safe temperatures for cooking and holding food; the importance of personal hygiene; how to identify cross-contamination and what is the cause; and how to prevent contamination from equipment, tools and utensils and more!

Cost: \$85

Date: (Saturdays) Oct. 7, 2017 and Dec. 2, 2017

Time: 9:30 a.m.-3:30 p.m.

Location: Central Union Mission, 65 Massachusetts Ave. NW, Washington, DC 20001

Register by E-mail/Phone: openheart11@verizon.net or (301) 297-9288 or (240) 832-2683

Sponsor(s): City Wide Community Training Institute

Audience: Infant-toddler teachers, administrators, and program support staff

Child Care and Development Block Grant Health and Safety (CCDBG) Course Modules

Units/Clock Hours: 33.5 Clock Hours

Description: Child Care Management Solutions (CMS) provides CCDBG Health and Safety courses designed to ensure that your staff has the core knowledge and skills that protect children. CMS can provide professional development modules in the 11 topic areas at your child care center for a fee. In addition, CMS Early Care Institute provides online training at (earlycareinstitute.com) on a number of topics for early childhood professionals.

Date & Time: Ongoing

Location: Onsite and Online

Registration and Cost: Call (301) 203-7648 or email: info@cms4training.com

Sponsor(s): Childcare Management Solutions

Audience: All teachers, assistant teachers, directors, and home care providers

45 Hour Infant Toddler CDA Renewal Course

Units/Clock Hours: 45 Clock Hours

Description: This 45 Hour Infant/Toddler course is accepted by the CDA Council for the 45 hour CDA Renewal. This is an advanced level course for experienced child care professionals. It teaches guidelines for working with infants and toddlers in any child care setting.

Date & Time: Ongoing

Location: Online earlycareinstitute.com

Register by: Online earlycareinstitute.com

Sponsor(s): Childcare Management Solutions

Audience: All teachers, assistant teachers, directors and home care providers needing Infant/Toddler Renewal

45 Hour Infant Toddler Course

Units/Clock Hours: 45 Clock Hours

Description: This 45 hour infant toddler course introduces the major concepts, principles, theories and research related to the development and care of children birth to three years of age. Participants will learn to create a healthy and safe environment for care and early learning, by applying the principles of infant/ toddler growth and development. (This course is accepted by the CDA Council for the 45 hour Infant/Toddler CDA Renewal.)

Cost: Varies

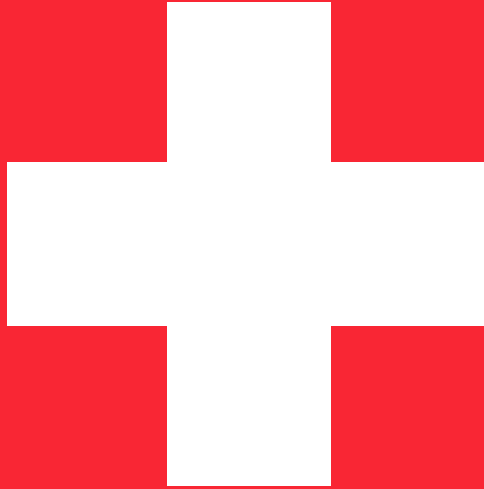
Date & Time: Ongoing

Location: Online earlycareinstitute.com

Register by: earlycareinstitute.com

Sponsor(s): Childcare Management Solutions

Audience: All infant/toddler teachers, directors, and home care providers



CPR RESOURCES

Organization	Registration	Location	Cost
OSSE The Coles Group, LLC Marvin Coles (202) 486-6019 marvin@thecolesgroupdc.com	Listed in OSSE catalog and must register through Eventbrite	Will Vary	FREE Limited Space
Loving Your Heart, LLC Joan Irabor	(202) 340-0980 Joan20131@gmail.com	5212 Drake Place SE Washington, DC 20019	Call for Pricing
Javonne Haynes	(202) 256-9214 Javonne332000@yahoo.com	Will Vary	Call for Pricing
Patricia Burton- McFadden	(240) 714-0014 (202) 604-6508 divaenterprize@gmail.com	Will Vary	Call for Pricing
Donna Thomas	(202) 689-0429 or 0443 pulseone@yahoo.com	Will vary	Call for Pricing
Bernida Thompson	(202) 882-8073 (202) 270-3266 bthompson@rootspcs.org	Will Vary	Call for Pricing
Know CPR Don Sussman	(703) 528-7045 info@knowcpr.com	Will Vary	Call for Pricing
Turning Corners, LLC Khadijah Alima Long	(240) 615-0407 turningcornersllc@yahoo.com	Will Vary	Call for Pricing

OSSE-Certified Trainer Resource Guide

**The trainers listed beyond this point are
Fee-for-service professional development providers.**

FREQUENTLY ASKED QUESTIONS:

1. Why are Approved Trainers Important?

Research shows that early childhood professionals with specialized training AND higher education/professional credentials are more likely to create quality experiences for young children and their families. All staff in early childhood programs must provide evidence that they are receiving specialized training via continuing education and professional development activities. Continuing education requirements may vary depending on the type of program (subsidized child care, Head Start, publicly funded pre-K, etc).

The Office of the State Superintendent of Education (OSSE) approves competent individuals and organizations to train early childhood professionals. Trainers are selected based on their education and experience in the field. Only trainings delivered by OSSE approved trainers, accredited colleges/universities or other OSSE approved sources are acceptable.

2. What Counts as Continuing Education?

Professional Development Training/Clock Hours: At minimum, training participants should receive Professional Development Training Hours for the total length of the training. This is commonly referred to as “clock hours.”

Continuing Education Units (CEUs): A CEU is participation in a recognized continuing education program. Some colleges, universities, and OSSE certified training organizations can award CEUs.

1 CEU = 10 Professional Development Training/Clock Hours.
See question 3 for additional guidelines.

Academic Credit Hours: Colleges and universities award academic credit hours after a course of studies has been successfully completed. 1 academic credit = 15 Professional Development Training/Clock Hours. Most college courses are 3 academic credit hours. See question 3 for additional guidelines.

3. Are there additional guidelines or recommendations?

If seeking CEUs, OSSE certified training organizations authorized by the [International Association for Continuing Education & Training](#) (IACET) or colleges/universities accredited by regional accrediting bodies, National Association for the Education of Young Children (NAEYC) or National Council for Accreditation of Teacher Education (NCATE) are highly recommended.

If seeking Academic Credit Hours, colleges/universities accredited by regional accrediting bodies, National Association for the Education of Young Children (NAEYC) or National Council for Accreditation of Teacher Education (NCATE) is highly recommended.

4. How do I Select an Approved Trainer?

- a) Determine Your Training Needs - Core Knowledge Areas and Content Level

Core knowledge Area:

The Core Knowledge Areas detail the specific knowledge and skills needed by early childhood professionals to work effectively with all young children and families. Use classroom assessments, staff evaluations, and other data about your program to determine the core knowledge area that you or your staff needs more support with.

Training Content Level:

What level of training are you seeking?

- Basic Content Level: The audience is somewhat new to the concept and needs to learn or relearn the basics.
- Intermediate Content Level: The audience understands the basics, but needs to apply what is learned.
- Advanced Content Level: The audience understands the basics, has already applied the concepts, but needs to understand how to evaluate and synthesize the effectiveness of implementation.

- b) Identify and Contact the Trainer(s)

Make sure that the trainer you selected is certified to train in the core knowledge area and at the level you are seeking. The trainer must have a current (not expired) certification. This list will be revised periodically. Please contact us to confirm that you have the most recent listing. The trainer's name and certification number must be listed on the training certificate. **OSSE is not responsible for arrangements made with outside trainers and cannot guarantee the quality of services provided by these trainers. **

- c) Apply Concepts Learned

Continuing education is more than “getting clock hours.” The topics and content level should be intentionally selected. The concepts learned should be used to provide quality experiences for young children and their families.

- d) Reflect on & Evaluate the Impact

Did the training have an impact? What were the challenges of implementation? Identify the next steps. Quality is a continuous improvement and reflection process.

5. What is the Function of the Office of the State Superintendent of Education?

The Office of the State Superintendent of Education (OSSE) provides leadership and coordination to ensure all District of Columbia children from birth to kindergarten entrance have access to high-quality early childhood development programs.

OSSE works to develop an effective early childhood education system by:

- implementing high standards for programs and professionals
- creating supports to meet standards
- adhering to rigorous accountability measures
- engaging community stakeholders
- securing strong financial supports

UNDERSTANDING CORE KNOWLEDGE AREAS:

CURRENT LANGUAGE	PREVIOUS LANGUAGE
<p>1. Child Growth and Development</p> <ul style="list-style-type: none"> - Principles of child growth and development - Domains and stages of development (motor, language, cognitive, social-emotional) - Links between various aspects of development and learning 	1. Human Development
<p>2. Observing, Documenting and Assessing to Support Young Children and Families</p> <ul style="list-style-type: none"> - Observation and assessment of children's behavior - Screening instruments for all domains (motor, language, cognitive, social-emotional) - Using observations and assessments in a effective way to support children and families - Recognize the types and signs of child mental health issues 	2. Observing, Recording and Assessing Children's Behavior
<p>3. Health, Safety, and Nutrition</p> <ul style="list-style-type: none"> - Physical Development, Health and Safety - Nutrition - Types and signs of abuse, neglect, and violence; responsibilities and procedures for reporting abuse and neglect - Developmental consequences of abuse, neglect, stress and trauma 	3. Health, Safety and Nutrition
<p>4. Curriculum</p> <ul style="list-style-type: none"> - Planning and implementing a developmentally appropriate curriculum that advances all areas of children's learning and development - Approaches to Learning, Language and Literacy, Mathematical Thinking, Scientific Inquiry, Creative Arts - Considering culturally-valued content and home experiences - Strategies that offer choices and foster curiosity, problem solving and decision-making - Planning and implementing a curriculum that is aligned with DC's Early Learning Standards 	4. Developmentally Appropriate Curriculum
<p>5. Inclusive Practices</p> <ul style="list-style-type: none"> - Characteristics of children with varied disabilities - Adaptations of curricula to include children with disabilities in all classroom activities - Interventions to enhance the growth and development of children with disabilities and development of Individualized Family Service Plan (IFSP) or Individualized Education Plan (IEP) 	5. Inclusive Practices for Children with Disabilities
--note: Guidance and Management now merged with 11--	6. Guidance and Management
<p>6. Learning Environments</p> <ul style="list-style-type: none"> - Creates learning environments that are responsive to the diverse needs of the abilities and interests of young children - Strategies to implement learning environments that support developmentally appropriate practices (infants, preschoolers, school age) - Adaptations to fully include children with special needs 	7. Learning Environments
<p>7. Building Family and Community Relationship</p> <ul style="list-style-type: none"> - Principles and strategies that view families as functional and resilient with diverse values, cultures, unique temperaments and learning styles - Establishing relationships and communication with families and other community systems that are productive, supportive and pro-active - Issues, challenges, and services regarding mental health 	8. Supportive Relationships with Children Families and other Community Systems

CURRENT LANGUAGE	PREVIOUS LANGUAGE
<p>8. Diversity: Family, Language, Culture, and Society</p> <ul style="list-style-type: none"> - Culture, language and ethnicity as a positive influence on a child's development - Helping young children understand and appreciate different cultural traditions 	<p>9. Diversity, Family, Language, Culture, Society</p>
<p>9. Program Management: Operation and Evaluation</p> <ul style="list-style-type: none"> - Approaches and techniques to plan, organize, and use available resources - Effective strategies for working productively with staff and community resource individuals and agencies - Techniques to conduct program evaluation and to implement program improvements - Interpersonal development and communication including team building, collaboration, and conflict management principles and skills. - Fiscal planning and management 	<p>10. Program Operation and Evaluation</p>
<p>10. Professionalism and Advocacy</p> <ul style="list-style-type: none"> - Scope of the early childhood profession - Impact of federal, state, and local standards, policies, regulations, and laws which govern and impact on children, programs and early childhood professionals - Approaches to evaluate one's professional skills and need for professional development - Responsibility to work with other early care and education professionals, parents and the community to discuss and improve policies, laws, standards, practices that impact children, programs and the profession 	<p>11. Professionalism and Advocacy</p>
<p>11. Social-Emotional Development and Mental Health</p> <ul style="list-style-type: none"> - Social and emotional development - Communication techniques for guiding young children toward self- direction and confidence - Guidance and management strategies that support developmentally appropriate practices - Approaches to provide supportive relationships with children and to foster positive peer-to-peer interactions - Approaches to meet the mental health needs of all children 	<p>12. Social/Emotional Development and Mental Health</p>

UNDERSTANDING THE TRAINING CONTENT LEVELS:

Content Level	What Audience is this Level of Training for?	Alignment with Bloom's Taxonomy
Basic	The audience is somewhat new to the concept and needs to learn or relearn the basics.	Knowledge Comprehension
Intermediate	The audience understands the basics but need to apply what is learned.	Application Analysis
Advanced	The audience understands the basics, has already applied the concepts, and need to understand how to evaluate and synthesize the effectiveness of implementation.	Synthesis Evaluation

Identify and Contact the Trainer

- Make sure that the trainer you selected is certified to train in the core knowledge area and at the level you are seeking. The trainer must have a current (not expired) certification. This list will be revised periodically. Please contact us to confirm that you have the most recent listing. The trainer's name and certification number must be listed on the training certificate. ** OSSE is not responsible for arrangements made with outside trainers and cannot guarantee the quality of services provided by these trainers**

Apply Concepts Learned

- Continuing education is more than 'getting clock hours.' The topics and content level should be intentionally selected. The concepts learned should be used to provide quality experiences for young children and their families.

Reflect on & Evaluate the Impact

- Did the training have an impact? What were the challenges of implementation? Identify the next steps. Quality is a continuous improvement and reflection process.

CERTIFIED TRAINING- ORGANIZATIONS:

Organization, Primary Contact and Contact Information	Training Content Level	Core Knowledge Area	Trainings Offered in Other Language
Action for Healthy Kids Kristina Shelton (303) 883-2482 (410) 707-9038 kshelton@actionforhealthykids.org	Basic	3	No
Advocates for Justice and Education, Inc. Jazmone Taylor jazemone.taylor@aje-dc.org (202) 678-8060	Basic	1,2,3,5,10,11	Yes Spanish & Amharic
Apple Tree Institute for Education Innovation Kelly Trygstad (202) 488-3990 ktrystad@appletreeinstitute.org	Advanced	ALL	Yes Spanish, German, Farsi, Pashto, Portuguese, French & Tagalog
Azspire, LLC Jacqueline Howell (301) 873-7680 azspire@gmail.com	Advanced	4,6,11,8,9	No
BEE Pre-K-3, LLC Delia Richards (301)785-3260 drrichece@aol.com	Advanced	5,8	No
Better Futures, LLC Jahi Davis (202) 587-5638 jdavis@betterfuturesdc.com	Intermediate	1,2,3,4,6,7,9,10	Yes Hindi, Nepali, Urdu
Bright Horizons Children’s Centers, LLC Deborah Koshansky (857) 334-1037 deborah.koshansky@brighthorizons.com	Basic	1,4,6,7,8,9,10,11	No
Bright Beginnings, Inc. Yasmin Shaffi (202) 842-9090 yshaffi@brightbeginningsinc.org	Basic	4	No
Bureau of Nutrition & Physical Fitness, DC DOH Michele Tingling-Clemmons (202) 442-9140 Michele.Tingling-Clemmons@dc.gov	Basic	3	Yes Spanish
CentroNia Esteban Morales (202) 332-4200 emorales@centronia.org	Advanced	ALL	Yes Spanish
Chapman Cares, Inc. Andrea Chapman (301) 449-1181 chapmancares@aol.com	Basic	3 Specialized Area CPR & 1 st AID	No

Organization, Primary Contact and Contact Information	Training Content Level	Core Knowledge Area	Trainings Offered in Other Language
ChildCare Education Institute Kimberle Collins (1-800) 499-9907 ext.533 kcollins@cceionline.edu	Advanced	ALL On-Line	Yes Spanish
Child Care Management Solutions Amina Jones Law (301) 203-7648 info@cms4training.com	Advanced	ALL On-Line	No
Child Development Consultants, LLC Judith Greenberg (301) 442-3857 jgreenberg@childdc.com	Intermediate	1,5,6,11	Yes Spanish & French
Children's National Medical Center Wayne Neal wneal@childrensnational.org Candice Pantor (202) 465-6713 CPantor@childrensnational.org	Advanced	2,3,5,7	No
City Wide Community Child Development Center Shirley Johnson (301) 580-1072 (240) 832-2682 openheart11@verizon.net sjohnson@missiondc.org	Intermediate	1,3,4,5,6,7,8,11 Specialized Area Food Handlers	No
CYPHERWORX Catherine Anderson (585) 626-8685 canderson@cypherworx.com	Basic	ALL On-Line	No
Departmental of Behavioral Health vs. Mental Health Barbara Parks Note: Not open to public (202) 698-1871 Barbara.Parks@dc.gov	Intermediate	1,2,3,4,7,8,11	No
Department of Health Sharon Brandon (202) 442-5925 Sharon.Brandon@dc.gov	Advanced	ALL	Spanish
DC Fire & EMS Department Aleazor Taylor (202) 727-2215 Aleazor.Taylor@dc.gov	Intermediate	2,3,11	No
DC Public Library Patty Reeber (202) 727-2313 Patty.Reeber@dc.gov	Basic	4	No

Organization, Primary Contact and Contact Information	Training Content Level	Core Knowledge Area	Trainings Offered in Other Language
Debra L. Byrd & Associates Debra Byrd (703) 965-7637 VAbyrds@aol.com	Intermediate	1,2,3,9,11	No
Early Learning Strategies and Solutions (ELSS) LLC Joi Woods 240-270-2199 workshops@elssconsulting.com	Intermediate	3,9,10	No
Early Stages Jane Anderson (202) 698-8037 Jane.anderson@dc.gov	Intermediate	1,2,3,4,5,6,7,8,10,11	Yes Spanish & Amharic
Easter Seals Jamellah Reid (301) 920-9756 (240) 641-3182 jreid@eseal.org	Intermediate	6	No
Edward C. Mazique Parent Child Center, Inc. Almeta Keys (202) 462-3375 akeys@ecmpcc.org	Basic	1,2,3,4,5,7,8,9,10	No
Eisenhart & Associates, Educational Consulting Corrine Eisenhart (717) 249-7733 (717) 991-9201 EisenhartConsulting@gmail.com	Advanced	1,2,4,5,6,7,10	No
FAA/DOT Child Development Center Sharleen Smith (202) 267-7672 Sharleen.E-CTR.Smith@faa.gov	Intermediate	ALL	No
Georgetown University Center for Child and Human Development Toby Long (202) 678-8742 longt@georgetown.edu	Advanced	ALL	Yes Spanish
Hurley and Associates, LLC Eric Hurley (301) 899-1400 (301) 356-2278 ehurley@erhurleyassoc.com	Advanced	ALL	Yes Spanish
ICF Early Education Institute Barbara McCreedy (703) 225-2181 barbara.mccreedy@icfi.com	Advanced	ALL	Yes Spanish
Imagination Stage Joanne Seelig (301) 280-1646 jseelig@imaginationstage.org	Intermediate	1,4,5,11	No

Organization, Primary Contact and Contact Information	Training Content Level	Core Knowledge Area	Trainings Offered in Other Language
Inner City-Inner Child Ingrid Zimmer (202) 965-2000 ext. 104 Ingrid@innercity-innerchild.org	Intermediate	4,7,10,11	American Sign Language
Innis Enterprise, Inc. Michelle Marbury (301) 933-0779 (240) 882-5550 m.innis@verizon.net	Advanced	ALL	Yes Spanish
Instituto de Educac'ion Infantil, Inc. Miriam Baldwin (301) 982-1596 mbaldwin20@hotmail.com	Intermediate	1,3,4,6,7,8,9,10,11	Yes Spanish
Kaplan Early Learning Company Stacie Hitzke (800) 334-2014 X6498 (612) 384-6387 stacih@kaplanco.com	Advanced	ALL	No
Kids Are Us Learning Centers, Inc Lynita Law-Reid (202) 561-0290 lynitakaulc@aol.com	Intermediate	1	No
Kids Comprehensive Services, LLC Brenda Harris (202) 678-0027 (202) 829-2500 brendaharrisw@aol.com	Advanced	ALL	Yes Spanish
KJ Consulting Group Kamila Johnson (240) 595-2790 kamila@kj-consulting.org	Basic	ALL Specialized Area CPR & 1 st AID	Yes Spanish
Know CPR Don Sussman (703) 528-7045 info@knowcpr.com	Advanced	3 Specialized Field CPR & 1 st AID	No
Loving Your Heart, LLC Joan Irabor (202) 340-0980 joan20131@gmail.com	Intermediate	3 Specialized Field CPR & 1 st AID	No
Martha's Table Thanh Pham (408) 780-5990 tpham@marthastable.org	Advanced	ALL	Yes Vietnamese Cape Verdean Creole
Mary's Center for Maternal and Child Health Lisa Luceno 202-232-7777 lluceno@briya.org	Advanced	ALL	Yes Spanish

Organization, Primary Contact and Contact Information	Training Content Level	Core Knowledge Area	Trainings Offered in Other Language
McFarren Aviles and Associates Jill McFarren Aviles 703-505-0127 jill@mcfarrenaviles.com	Advanced	2,4,6	Yes Spanish
National Association for the Education of Young Children (NAEYC) (1-800) 424-2460 www.naeyc.org	Advanced	ALL	No
National Black Child Development Institute Georgia Thompson (202) 833-2220 X6550 gthompson@nbcidi.org (202) 833-2220 www.nbcidi.org	Advanced	ALL	No
National Child Research Center Mary C. Farmer (202) 363-8777 ext. 235 mfarmer@ncrcpreschool.org	Intermediate	1,4,5,7,9	Yes Spanish
Office of the State Superintendent of Education (OSSE) Professional Development Unit Nigel Henley (202) 727-8119 Nigel.Henley@dc.gov	Advanced	ALL	Yes Spanish & Amharic
Office of the State Superintendent of Education (OSSE) Nutrition Katrina Florek (202) 442-4011	Advanced	3	No
Quorum Learning Camiley Constantine (404) 325-2225 Registrar@Qassist.com	Advanced	ALL On-Line	No
Roots Activity Learning Center, Inc. Bernida Thompson (202) 270-3266 (202) 882-5155 bthompson@rootspcs.org idankechi@aol.com	Advanced	1,3,4,5,10 Specialized Area CPR & 1st Aid	No
Safe Shores-DC Children's Advocacy Gerald DeLeon (202)-645-4337 gdeleon@safeshores.org www.safeshores.org	Basic	3	Yes Spanish

Organization, Primary Contact and Contact Information	Training Content Level	Core Knowledge Area	Trainings Offered in Other Language
School Readiness Consulting Katherine Rowell (877) 447-0327 rowell@schoolreadinessconsulting.com www.schoolreadinessconsulting.com	Advanced	ALL	Yes Spanish
Serve DC Willie McElroy (202) 727-7970 (202) 394-2863 Willie.McElroy@dc.gov	Advanced	3 Specialized Area Community Emergency Response Team (CERT)	No
Smithsonian Early Enrichment Center Brooke Shoemaker 202-633-2945 shoemakerb@si.edu	Intermediate	6	No
Smithsonian National Air and Space Museum Ann Caspari (202) 633-2557 caspariak@si.edu	Intermediate	4,6	No
Southeast Children's Fund –Professional Development Institute Frances J. Rollins (202) 561-5736 sechild@verizon.net rollins.frances@gmail.com	Advanced	ALL	Yes Spanish & Tagalog
Support By Design Badiyah Mushirah-Sharif (571) 480-9967 support-by-design2013@outlook.com	Advanced	ALL	No
Teaching Strategies (301) 634-0818 teachingstrategies.com	Advanced	4	Yes Spanish
The Coles Group, LLC Marvin Coles (202) 486-6019 marvin@thecolesgroupdc.com	Advanced	3 Specialized Area CPR & 1 st AID	Yes Urdu, Spanish, Punjabi, Hindi, Vietnamese, Korean, Chinese & Amharic
The Ounce of Prevention Fund Renee Welch (312) 922-3863 (708) 805-0195 rwelch@ounceofprevention.org	Intermediate	2,9,10	No
Turning Corners LLC Khadijah Alima Long (240) 615-0407 turningcornersllc@yahoo.com	Advanced	3 Specialized Area CPR and 1st AID	No
United Planning Organization (UPO) Syrta L. Robinson (202) 238 4636 (240) 304 6227 srobinson@upo.org	Advanced	ALL	Yes Spanish

Organization, Primary Contact and Contact Information	Training Content Level	Core Knowledge Area	Trainings Offered in Other Language
United States General Services Administration Sandy Axelrod (202) 205-7406 sandra.axelrod@gsa.gov	Advanced	ALL	No
United States Botanic Garden Lee Coykendall (202) 226-1117 (202) 578 8119 Lcoykend@aoc.gov	Advanced	3,4,6,7,8	No
WETA Susan Schatten (703) 998-2829 sschatten@weta.org	Basic	1,6,11	No
Wolf Trap Foundation for Performing Arts Lori Phillips (703) 255-1933 lorip@wolftrap.org	Basic	4, 8	No
YMCA of Metropolitan Washington Kimberly King (202) 232-6700 Kimberly.king@ymcadc.org	Intermediate	1,3,11	No
Zero To Three Frances Moore (202) 857-2998 fmoore@zerotothree.org	Intermediate	2	Yes Spanish

End of Certified Training Organization

CERTIFIED TRAINING- INDIVIDUALS

Individual and Primary Contact Information	Training Content Level	Core Knowledge Area	Trainings Offered in Other Language
Janina Admana (571) 255-9873 jadmana@marthastable.org	Intermediate	1,2,4	No
Shiffaun L. Alston (202) 340-5224 alstonsh82@gmail.com	Basic	1,9,10	No
Berna Artis (202) 257-9528 Berna.artis@comcast.net	Intermediate	1,2,3,4,6,8,10,11	Yes Turkish
Beatriz Barros (202) 808-8021 bbarros@marthastable	Advanced	1,4	No
Ernesta Battle (301) 455-8233 dr.ernestabattle@gmail.com	Advanced	2,4,6,8,9,10,11	No
Linda Bean (202) 529-5437 X105 lbean@happyfaces247.com	Intermediate	1,6,8,9,10	No
Saundra Bishop (202) 569-3177 saundra@basicsaba.com	Advanced	11	No
Michelle L. Brown (202) 427-4768 Emmitt69@msn.com	Basic	All	No
Shirley E. Cooley (202) 561-5286 (202) 423-6163 secskinner@yahoo.com	Intermediate	1,3,10	No
Lisa Blackwell Danahy (301) 814-7115 lisanadahy@gmail.com lisa@dynamiclifeyoga.com	Basic	1,4,8,11 Specialized Area Yoga	No
Robert E. Gundling (703) 960-5853 secfund@aol.com rgundling@aol.com	Advanced	1,9	No
Javonne Haynes (202) 256-9214 javonne332000@yahoo.com	Basic	3 Specialized Area CPR & 1st Aid	No
Nigel Henley (202) 727-8119 Nigel.Henley@dc.gov	Advanced	1,9,11	Yes Spanish
Wanda Holmes (202) 441-0173 wdholmes@starpower.net	Advanced	1,4,7,8,9	No
Jacqueline Howell (301) 873-7680 azspire@gmail.com	Advanced	4,6,7,10,11	Yes French Sign Language

Individual and Primary Contact Information	Training Content Level	Core Knowledge Area	Trainings Offered in Other Language
Ali Hurewitz (202) 362-3836 tsns.ad@templesinaidc.org	Intermediate	4,6,9	No
Angela Chester Johnson 202-409-7465 aglo1001@gmail.com	Advanced	1,3,4	Yes French
Kamila Johnson (240) 595-2790 johnsonkamila@yahoo.com kamila@kj-consulting.org	Advanced	2,3,4 Specialized Area CPR & 1 st AID	Yes Spanish
Majorie A. Kinard 301-890-6805 makinard@hotmail.com	Basic	1, 9, 11	No
Kimberly King (202) 841-2733 askbig@hotmail.com	Basic	1,9,10	No
Maimunah Marah (301) 565-0037 TutusStorybooks@gmail.com	Advanced	4	No
Patricia L. Burton-McFadden (202) 604-6508 (240) 714-0014 diva_enterprize@yahoo.com divaenterprize@gmail.com	Basic	1, 3, 4, 5, 6, 9, 10, 11 Specialized Area CPR & 1 st AID	No
Tanetta Merritt (202) 562-7908 (202) 607-1665 Tanetta.merritt@gmail.com	Basic	1,3	No
Sarah Meytin (240) 413-6056 sarahmmsam@yahoo.com sarah.meytin@bnaishalomofolney.org	Basic	7,8,10	No
Melanie Newkirk 240-838-3776 mel.newkirk@gmail.com	Basic	7	No
Rosalind Oden (202) 441-1381 202-476-3113 rpoden@childrensnational.org	Advanced	2,3,5,7	No
Thanh Pham (408) 780-5990 tpham@marthastable.org	Advanced	2,4,5	Vietnamese
Cathryn Phillips (301) 586-7934 cathrynphillips7@aol.com	Intermediate	1,4,6	No
Kameka Pierre (202) 722-2377 kpierre@nccinc.org	Basic	3 Specialized Area CPR & 1 st AID	No
Brandee C. Reed (202) 630-0228 brandee_reed@yahoo.com	Intermediate	9,10	No

Individual and Primary Contact Information	Training Content Level	Core Knowledge Area	Trainings Offered in Other Language
Sunithi Selvaraj (240) 994-4827 sueselvaraj@gmail.com	Intermediate	3 Specialized Area Food Safety Manager Certification	Yes Hindi, Kanada & Tamil
Stephanie Slater (202) 362-4491 Stephanie.Slater@adasisrael.org	Intermediate	1,5	No
Rosalie Slaughter (202) 257-7184 rs818@hotmail.com	Basic	3,6,8	No
Angelique Speight (202) 270-3098 angeliquespeight@yahoo.com	Basic	1	No
Donna Thomas (202) 689-0429 pulseone@yahoo.com	Basic	3 Specialized Area CPR & 1 st AID	No
Kimberly Tolliver (202)276-2523 dsugrad03@gmail.com	Basic	1,6	No
LaShawn Tracy (202) 439-0324 shawnjtra@yahoo.com tracyconsulting37@gmail.com	Intermediate	1,3,4 Specialized Areas Food Safety Manager CPR & First Aid	No
Janet Ngozi Unonu (202) 415-4213 Junonu47@hotmail.com	Intermediate	3 Specialized Area Nutrition	Igbo
Cassandra Wallace (202)465-1891 cwallace@marthastable.org	Intermediate	4,11	No
Constance Watkins 301-395-6657 (301) 922-7716 clwatkins50@verizon.net	Intermediate	1,6,11	No
Sherri Watkins (202) 361-8605 sherrilee22@yahoo.com	Basic	3	No
Christine Schoppe Wauls (703) 624-9451 christineccc@aol.com	Intermediate	4,6,7	No
Darryl Webster (202) 207-4964 drrylwbster@aol.com	Advanced	11	No

End of Certified Training [Individual](#)

TRAINING PLANNING GUIDE:

- Based on data, training is needed in

_____ (core knowledge area) at the
_____ level (content level)

_____ (core knowledge area) at the
_____ level (content level)

_____ (core knowledge area) at the
_____ level (content level)

- I have a copy of the most current listing of certified trainers.
- The trainer is certified to train in the area and at the level I am seeking.
- The trainer has a current (not expired) certification.
The trainer's name and certification number will be on the certificate issued.
- Training participants know that the concepts learned must be applied. Support and monitoring will be provided as needed.
- After the training & application, training participants will reflect and evaluate the impact.