



Interagency Coordinating Council (ICC) Meeting

Jan. 20, 2023



Welcome and Call to Order



Meeting Business



DC Early Intervention Program (DC EIP)

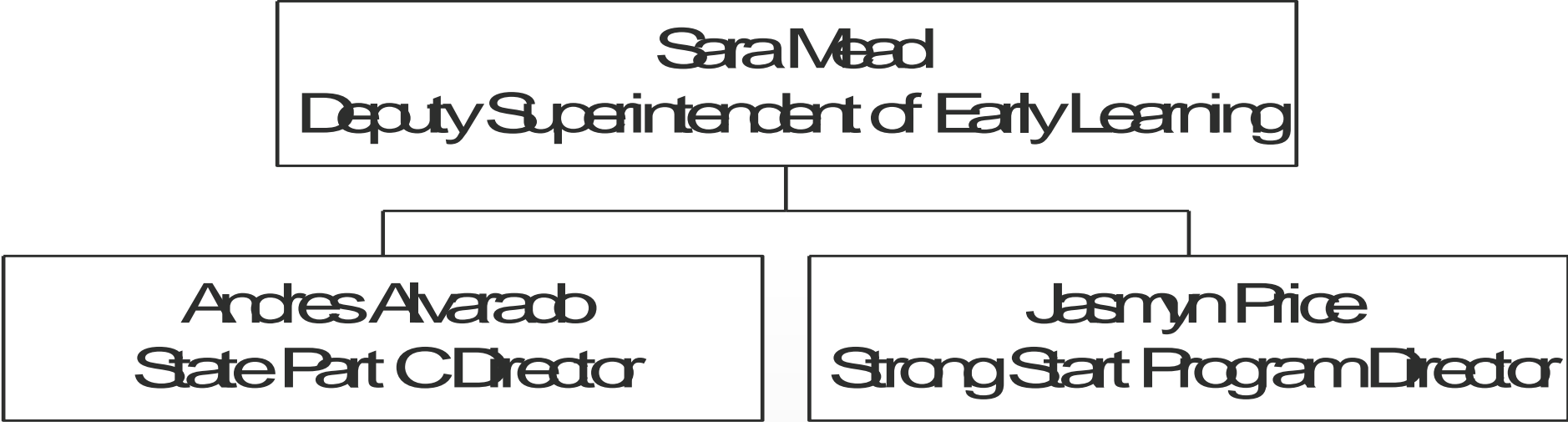


Program Updates

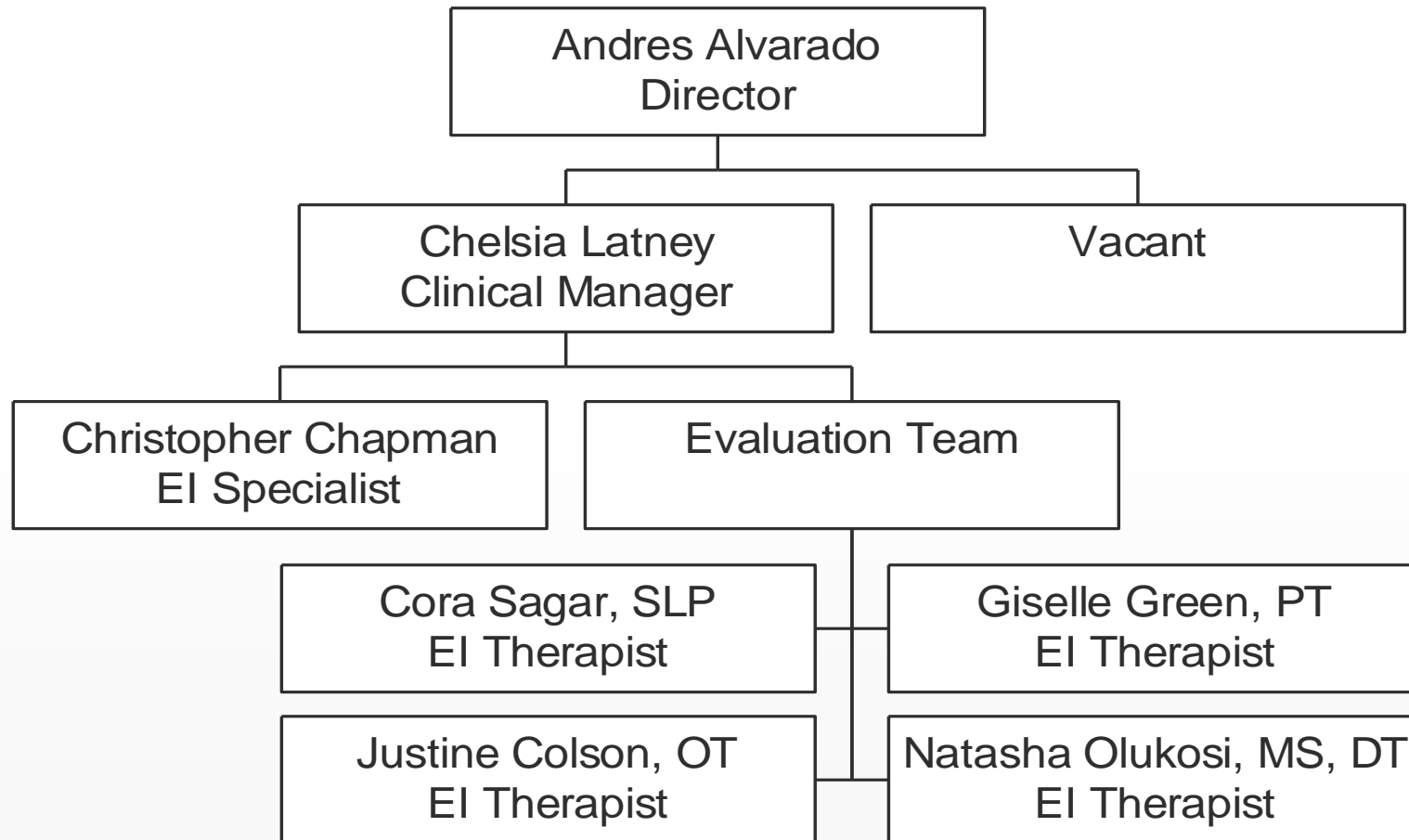
COVID-19 guidelines

- Updated on Jan. 3, 2023 and available on [OSSE's website](#) under Strong Start section
- Eligibility and transition evaluations in-person only
- Consent required only for virtual visits
- Review with families and emphasize the importance of monitoring their health and the health of anyone who will be participating at an in-person visit

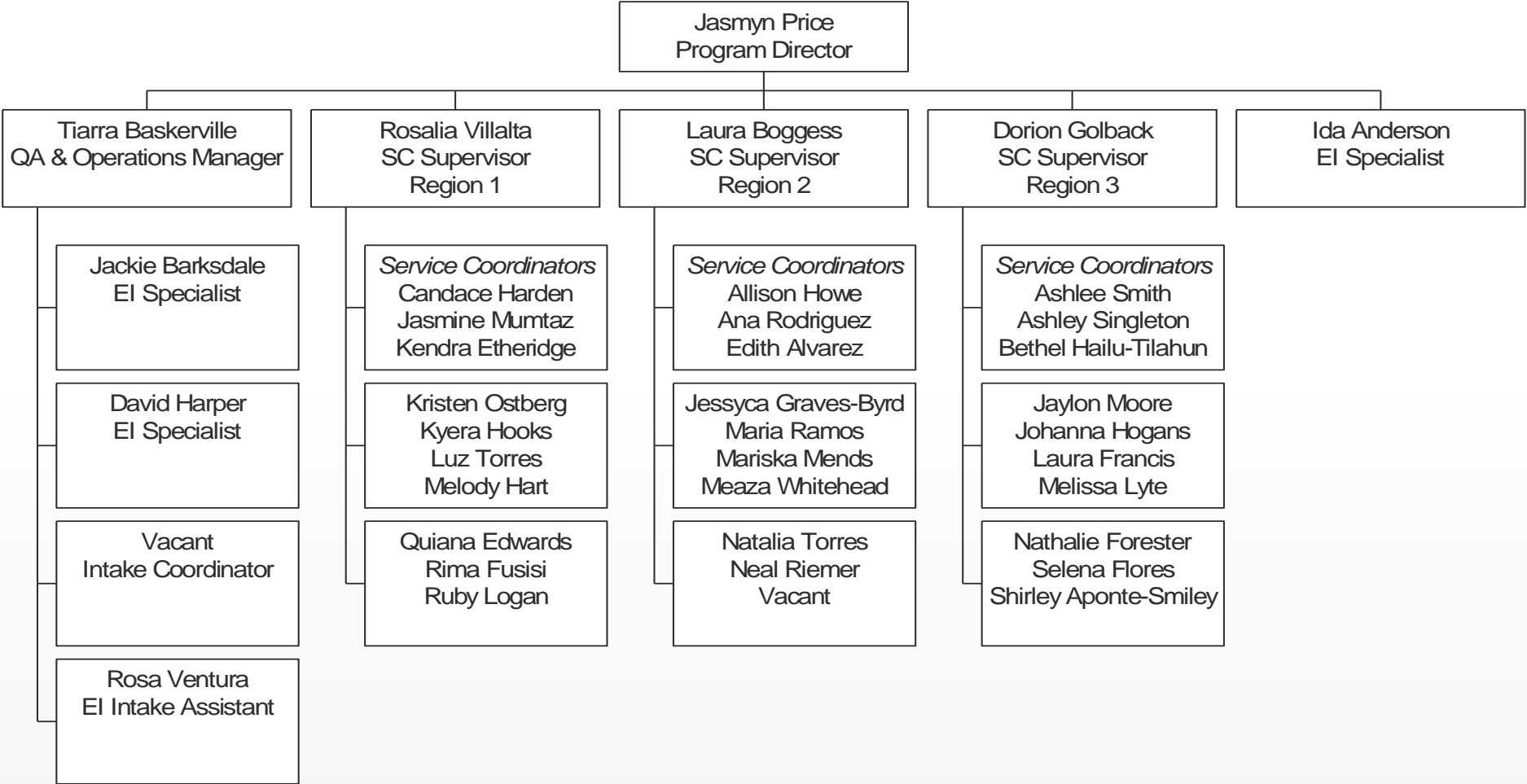
DC EIP



State Part C Team



Strong Start Program Team





**Annual Performance Review
(APR) Federal Fiscal Year 2021
(FFY 2021)**

APR FFY 2021

- The State Performance Plan (SPP)/APR for FFY 2021 details the work of OSSE towards improving outcomes of infants and toddlers with developmental delays and disabilities and their families and covers the period July 1, 2021 - June 30, 2022.

Indicator 1: Timely Provision of Services

- Percent of infants and toddlers with Individual Family Service Plans (IFSPs) who receive the early intervention services on their IFSPs in a timely manner

FFY 2020	FFY 2021 Target	FFY2021	Met Target	Slippage
93.46%	100%	85.36%	Did not meet target	Slippage

- Reasons for slippage
 - shortage of providers
 - increase on delayed authorizations from Managed Care Organizations (MCOs)
 - service coordinators not uploading the IFSP on a timely manner

Indicator 2: Services in Natural Environments

- Percent of infants and toddlers with IFSPs who primarily receive early intervention services in the home or community-based settings

FFY 2020	FFY 2021 Target	FFY2021	Met Target	Slippage
100.00%	97.20%	100.00%	Met target	No Slippage

Indicator 3: Early Childhood Outcomes

- Percent of infants and toddlers with IFSPs who demonstrate improved:
 - A. Positive social-emotional skills (including social relationships);
 - B. Acquisition and use of knowledge and skills (including early language/communication);
and
 - C. Use of appropriate behaviors to meet their needs.

Indicator 3: Early Childhood Outcomes

- Of those children who entered or exited the program below age expectations, the percent who substantially increased their rate of growth by the time they turned age 3 or exited the program

Outcome	FFY 2020	FFY 2021 Target	FFY 2021	Met Target	Slippage
A. Positive social-emotional skills	87.57%	83.43%	83.39%	Did not meet target	Slippage
B. Acquisition and use of knowledge and skills	67.50%	68.10%	63.92%	Did not meet target	Slippage
C. Use of appropriate behaviors to meet their needs	84.34%	76.40%	77.16%	Met target	No Slippage

Indicator 3: Early Childhood Outcomes

- The percent of infants and toddlers who were functioning within age expectations by the time they turned age 3 years or exited the program

Outcome	FFY 2020	FFY 2021 Target	FFY 2021	Met Target	Slippage
A. Positive social-emotional skills	73.82%	71.00%	69.01%	Did not meet target	Slippage
B. Acquisition and use of knowledge and skills	58.73%	54.00%	56.62%	Met target	No Slippage
C. Use of appropriate behaviors to meet their needs	80.62%	76.00%	74.65%	Did not meet target	Slippage

Indicator 3: Early Childhood Outcomes

- Reasons for slippage
 - Every interventionist in the system for more than nine months is expected to complete the AEPS inter-rater reliability (IRR) certificate. This was included in the contract with the vendor agencies two years ago and by now most of the interventionists have completed the IRR. This effort could translate to improved data quality that results in lower scores at entry and exit.
 - The pandemic. Many of the children who are now exiting the program were either born or spent most of their early intervention time during the pandemic and experienced a lack of access to peers. Families also faced ongoing stress during this time.
 - OSSE has implemented all components of the Natural Learning Environment Practices (NLEP) framework which is the evidence-based approach selected for DC's State Systemic Improvement Plan (SSIP). OSSE is now moving to evaluate the fidelity of the implementation and expects that as the program moves to fidelity that outcomes of children will also improve as expected for this evidence-based approach.

Indicator 4: Family Involvement

- Response rate: 24.45 percent of 2,119 surveys sent
- Percent of families participating in Part C who report that early intervention services have helped the family:

Measure	FFY 2020	FFY 2021 Target	FFY 2021	Met Target	Slippage
A. Know their rights	85.96%	93.20%	85.77%	Did not meet target	No Slippage
B. Effectively communicate their children's needs	89.55%	93.20%	84.85%	Did not meet target	Slippage
C. Help their children develop and learn	88.62%	95.00%	83.79%	Did not meet target	Slippage

Indicator 4: Family Involvement

- Reasons for slippage
 - In FFY 2021 OSSE continued its use of an online survey. Slippage continued to occur, but more responses were collected this year and the program sent the survey to more families this time. Data reflect that families are still satisfied with services, with responses in the 83-86 percent range.
 - Reasons for the slippage could be due to COVID fatigue. Many of the families being served have children who were born during the pandemic, and they might be having other stressors that are affecting the perception of the services that they are receiving.
 - More families than ever have responded to the survey which can also start giving a more objective picture of how they feel about the program.
 - Lastly, the shortage of interventionists in the system and the fact that some families maybe received services at a later than expected time can be the cause of selecting a lower rating.

Indicator 5: Child Find (Birth to 1)

- Percent of infants and toddlers birth to age 1 with IFSPs

FFY 2020	FFY 2021 Target	FFY 2021	Met Target	Slippage
1.41%	1.50%	1.58%	Met target	No Slippage

Indicator 6: Child Find (Birth to 3)

- Percent of infants and toddlers birth to age 3 with IFSPs

FFY 2020	FFY 2021 Target	FFY 2021	Met Target	Slippage
3.67%	3.60%	4.45%	Met target	No Slippage

Indicator 7: 45-Day Timeline

- Percent of eligible infants and toddlers with IFSPs for whom an initial evaluation and initial assessment and an initial IFSP meeting were conducted within Part C's 45-day timeline

FFY 2020	FFY 2021 Target	FFY 2021	Met Target	Slippage
97.76%	100%	96.32%	Did not meet target	Slippage

Indicator 7: 45-Day Timeline

- Reasons for slippage
 - The program has had an increase in the number of service coordinators on family medical leave throughout FFY 2021 in addition to four vacancies in the program.
 - It is important to note that out of the nine IFSPs that were late, four IFSPs were late by one day and only two longer than 10 days.
 - The program also observed an increase of delayed authorizations from MCOs that impacted the timeline.

Indicator 8: Early Childhood Transition

- The percentage of toddlers with disabilities exiting Part C with timely transition planning for whom the Lead Agency has:

Measure	FFY 2020	FFY 2021 Target	FFY 2021	Met Target	Slippage
A. Developed an IFSP with transition steps and services	100.00%	100%	100.00%	Met target	No Slippage
B. Notified the SEA and LEA of toddler's potential eligibility	100.00%	100%	100.00%	Met target	No Slippage
C. Conducted transition conference	97.39%	100%	97.32%	Did not meet target	No Slippage

Indicator 9: Resolution Sessions

- Percent of hearing requests that went to resolution sessions that were resolved through resolution session settlement agreements

	FFY 2020	FFY 2021
A. Number of resolution sessions	0	0
B. Number resolution sessions resolved through settlement agreements	0	0

Indicator 10: Mediation

- Percent of mediations held that resulted in mediation agreements

	FFY 2020	FFY 2021
A. Mediations held	0	1
B. Mediations agreements related to due process complaints	0	0
C. Mediations agreements not related to due process complaints	0	1

Indicator 11: SSIP

- State-identified Measurable Result (SiMR)
 - Medicaid-eligible infants and toddlers will demonstrate a substantial increase in their rate of developmental growth in the acquisition and use of knowledge and skills by the time they exit the program.

FFY 2020	FFY 2021 Target	FFY 2021	Met Target	Slippage
53.45%	54.45%	49.67%	Did not meet target	Slippage

Indicator 11: SSIP

District of Columbia IDEA Part C Theory of Action

Strands	If OSSE	Then	Then	Then
Leadership	...finalizes plans and protocols for fidelity of practices and implements the plan for reaching and maintaining fidelity for EI providers and service coordinators	...providers will provide services in a consistent manner using evidence-based practices (EBP)	...actual practice will improve because the providers adhere to practice standards	...infants and toddlers with disabilities will demonstrate a substantial increase in the rate of developmental growth in the acquisition and use of knowledge and skills for Medicaid eligible children by the time they exit the program, as defined by the targets, for each of the years 2020-2025.
	...develops and implement an infant mental health framework for Part C early intervention to address social and emotional development of infants and toddlers	...early interventionists will increase the infant mental health competencies and skills of staff to address and improve the social-emotional well-being of children		
Data	...develops and implements a new B-21 data system to improve the collection, reporting and use of high-quality data	...early interventionists and LEAs will have access to accurate and reliable data ...parents will have access to their child's record online ...data will be available for the timely and smooth transition of children exiting Part C to Part B services		
Professional Development and Technical Assistance	...supports provider agencies in providing professional development that support their staff in building competencies to use EBP and maintaining federal and District compliance and improving competencies in the use of EBP	...provider agency leaders will support their early interventionists through professional development, observations, supervision and feedback in the implementation of the Natural Learning Environment Practices (NLEP)...Provider agency leaders will increase their ability to attract and retain qualified staff		
	...continues to review and revise professional development offerings for early interventionists	...providers will increase their understanding and use of the NLEP framework...Early intervention will be provided in a manner that is reflective of a common understanding and consistent implementation of the concepts used routinely in the provision of services.		
Accountability and Monitoring	...develops and implements a monitoring system that provides an overall accountability system for early intervention focusing on compliance and quality improvement	...agencies and early interventionists will be held accountable for the administration and provision of services ...appropriate and accurate data will be used to target technical assistance to specific areas of need		



Mission: To identify and serve infants and toddlers, birth through 2 years, with developmental delays and disabilities and their families. We coordinate services in a caring manner that supports the culture and meets the needs of families.



Indicator 11: Evaluation – Leadership Strand

Strategy	Activity	Timeline	Outcome	Measurement
Finalize plans and protocols for fidelity of practices and implements the plan for reaching and maintaining fidelity for early intervention providers and service coordinators	Develop a fidelity assessment process to ensure that the five characteristics of coaching are implemented with fidelity	February 2022	Providers will provide services in a consistent manner using evidence-based practices (EBP)	Completion of fidelity assessment process
	Begin implementation of fidelity assessment process	April 2022		
	Review data from fidelity assessments to evaluate progress	September 2022		
Develops and implements an infant mental health framework for Part C early intervention to address social and emotional development of infants and toddlers	Selected Strong Start staff complete the Infant Mental Health (IMH) certificate from Georgetown	May 2022	Early interventionists will increase the infant mental health competencies and skills of staff to address and improve the social-emotional well-being of children	Number of people who complete the certificate program Completion of IMH framework
	Research IMH frameworks used in other states' Part C programs and determine how infant mental health services should be provided and supported in Strong Start	July 2022		
	Develop an IMH framework and the structure to support the system during IFSP services, teaming meetings and capacity building	December 2022		
	Implement IMH framework in Strong Start	December 2023		



* *Bold denotes completed activity*

Indicator 11: Evaluation – Data Strand

Strategy	Activity	Timeline	Outcome	Measurement
Develops and implements a new B-21 data system to improve the collection, reporting and use of high-quality data	Build and design of the new Special Education Data System (SEDS)	April 2022	Early interventionists and local education agencies (LEAs) will have access to accurate and reliable data Parents will have access to their child's record online Data will be available for the timely and smooth transition of children exiting Part C to Part B services	Number of staff trained on new data system
	Test and train all users	September 2022		
	Implement SEDS	October 2022		



* *Bold denotes completed activity*

Indicator 11: Evaluation – Professional Development and Technical Assistance Strand

Strategy	Activity	Timeline	Outcome	Measurement
<p>Supports provider agencies in providing professional development that support their staff in building competencies to use EBP and maintaining federal and District compliance and improving competencies in the use of EBP</p> <p>Continues to review and revise professional development offerings for early interventionists</p>	Develop new website for Strong Start	June 2022	Provider agency leaders will support their early interventionists through professional development, observations, supervision and feedback in the implementation of NLEP	Early intervention staff trained and attended professional development opportunities
	Organize professional development opportunities to build the capacity of early interventionists in the system professional development offerings	December 2022		
	Design, develop and implement new training modules for early interventionists	December 2023	<p>Provider agency leaders will increase their ability to attract and retain qualified staff</p> <p>Providers will increase their understanding and use of the NLEP framework understanding and consistent implementation</p>	<p>Contract agencies will provide a plan for onboarding new hires</p> <p>Number of fidelity observations of staff by vendor agency</p>
	<p>Update Strong Start foundations training</p> <p>Continue to organize and implement monthly “Reflection Group” for early interventionists</p>	<p>January 2022</p> <p>Ongoing</p>		



* *Bold denotes completed activity*

Indicator 11: Evaluation – Accountability Strand

Strategy	Activity	Timeline	Outcome	Measurement
Develops and implements a monitoring system that provides an overall accountability system for early intervention focusing on compliance and quality improvement	Develop a monitoring tool to audit Strong Start program and vendor agencies	September 2022	Agencies and early interventionists will be held accountable for the administration and provision of services	Completion of a monitoring tool
	Implement ongoing monitoring of the system and offer targeted technical assistance	December 2022		Utilize the monitoring tool to set a baseline



* *Bold denotes completed activity*

Indicator 11: FFY 2022 Planning – Leadership Strand

Strategy	Activity	Timeline	Outcome	Measurement
Finalize plans and protocols for fidelity of practices and implements the plan for reaching and maintaining fidelity for early intervention providers and service coordinators	Develop and implement coaching fidelity analysis training exercise for fidelity observers	February 2023	Providers will provide services in a consistent manner using EBP	Completion of fidelity assessment process
	Develop teaming fidelity observation checklist tool for fidelity observers	April 2023		
	Review data from fidelity assessments to evaluate progress	October 2023		
Develops and implements an infant mental health framework for Part C early intervention to address social and emotional development of infants and toddlers	Develop an IMH framework and the structure to support the system during IFSP services, teaming meetings and capacity building	August 2023	Early interventionists will increase the infant mental health competencies and skills of staff to address and improve the social-emotional well-being of children	Number of people who complete the certificate program Completion of IMH framework
	Start implementation of IMH framework in Strong Start	December 2023		

Indicator 11: FFY 2022 Planning – Data Strand

Strategy	Activity	Timeline	Outcome	Measurement
<p>Develops and implements a new B-21 data system to improve the collection, reporting and use of high-quality data</p>	<p>Test final functionality of the system and train all users</p> <p>Final migration and implementation of Special Education Data System (SEDS)</p>	<p>April 2023</p> <p>October 2023</p>	<p>Early interventionists and LEAs will have access to accurate and reliable data</p> <p>Parents will have access to their child's record online</p> <p>Data will be available for the timely and smooth transition of children exiting Part C to Part B services</p>	<p>Number of staff trained on new data system</p>

Indicator 11: FFY 2022 Planning – Professional Development and Technical Assistance Strand

Strategy	Activity	Timeline	Outcome	Measurement
<p>Supports provider agencies in providing professional development that support their staff in building competencies to use EBP and maintaining federal and District compliance and improving competencies in the use of EBP</p> <p>Continues to review and revise professional development offerings for early interventionists</p>	Develop and update content of Strong Start website	October 2023	Provider agency leaders will support their early interventionists through professional development, observations, supervision and feedback in the implementation of NLEP	Early intervention staff trained and attended professional development opportunities
	Organize professional development opportunities to build the capacity of early interventionists in the system professional development offerings	June 2023		
	Design, develop and implement new training modules for early interventionists	December 2024	Provider agency leaders will increase their ability to attract and retain qualified staff	Contract agencies will provide a plan for onboarding new hires
	Migration to updated evaluation tool to determine eligibility from Battelle Developmental Inventory, Second Edition (BDI-2) to the Third Edition (BDI-3) and the assessment for child outcomes tool Assessment, Evaluation, and Programming System for Infants and Children, Second Edition (AEPS-2) to the Third Edition (AEPS-3)	December 2023		
			Providers will increase their understanding and use of the NLEP framework understanding and consistent implementation	Number of fidelity observations of staff by vendor agency

Indicator 11: FFY 2022 Planning – Accountability Strand

Strategy	Activity	Timeline	Outcome	Measurement
<p>Develops and implements a monitoring system that provides an overall accountability system for early intervention focusing on compliance and quality improvement</p>	<p>Implement ongoing monitoring of the system and offer targeted technical assistance</p> <p>Develop a monitoring tool for overall fidelity compliance</p> <p>Review and update DC Part C Early Intervention general supervision system for fiscal; Integrated Monitoring, Sustaining Compliance and Results, Data and SPP/APR; and Dispute Resolution protocols in preparation for differentiated monitoring and support (DMS) from US Department of Education.</p>	<p>August 2023</p> <p>September 2023</p> <p>December 2024</p>	<p>Agencies and early interventionists will be held accountable for the administration and provision of services</p>	<p>Completion of a monitoring tool</p> <p>Utilize the monitoring tool to set a baseline</p>

APR/SSIP Feedback

- What is your reaction to the information presented?
- Are we on the right track?
- Any thoughts on the evaluation plan for FFY 2022?



Member Updates



Public Comment



Adjourn Meeting
