



District of Columbia
Office of the State Superintendent of Education

Early Learning Course Catalog

FALL 2016

OSSE Division of Early Learning

osse.dc.gov



facebook.com/ossedc



@OSSEDC



202.727.6436





OSSE Mission

To remove barriers and create pathways for District residents to receive a great education and prepare them for success in college, careers, and life.

Introduction to the FALL FY 2017 Course Catalog

Thank you for your interest in professional development courses offered by the Office of the State Superintendent of Education, its partners and contractors, as well as the community of OSSE-Certified trainers. We look forward to providing responsive training opportunities that support your work creating high-quality learning experiences for children of all ages.

OSSE-sponsored offerings are data driven and/or research based. Trainings are selected and prioritized based on a variety of data sources including, but not limited to: community requests and workgroups; analysis of program assessment data; student achievement data from federal, state, and District sources; Education Service Monitor program reports; licensing inspection reports; the DC Common Core Early Learning Standards; and DC Municipal Regulations 29 Chapter 3.

The Early Learning Course Catalog was developed to provide the Early Childhood Education (ECE) and Out-of-School Time (OST) workforces with multiple opportunities for professional growth and development; opportunities for meeting the yearly continuing education requirements; and opportunities to participate in a District-wide professional learning community.

CATALOG FORMAT

Early Learning Catalog Distribution Cycle for FY 2017	The Early Learning Course Catalog will be distributed on the following schedule: <ul style="list-style-type: none"> • Fall (October, November, December) • Winter (January, February, March) • Spring (April, May, June) • Summer (July, August, September)
Quarterly Listings	The listings will span a full quarter allowing participants to plan trainings “ahead of time” and allow providers to develop a strategy for incorporating OSSE sponsored trainings into their greater staff development plans.
Table of Contents	The Table of Contents will help readers navigate the content of the course catalog.
Announcement Pages	The Announcement Pages will enable readers to stay abreast of OSSE initiatives and local offerings.
OSSE sponsored trainings	OSSE sponsored trainings, provided through a network of local and national partners and contractors are offered at no cost to participants.
Professional Learning Units	The term Professional Learning Units (PLUs) is used in conjunction with “clock hours” to provide greater alignment with the continuing education requirements for DC Public School and public charter school educators.
Core Knowledge Areas (CKA):	Core Knowledge Areas detail the specific knowledge and skills needed by early childhood professionals to work effectively with all young children and families. ECE and OST educators can increase their ability to provide quality learning experiences for young children by taking courses in all eleven areas. CKAs include: Child Growth and Development; Observing, Documenting and Assessing to Support Young Children and Families; Health, Safety, and Nutrition; Curriculum; Inclusive Practices; Learning Environments; Building Family and Community Relationships; Diversity: Family, Language, Culture, and Society; Program Management: Operation and Evaluation; Professionalism and Advocacy; and, Social-Emotional Development and Mental Health.
Course Listings	Course listings are communicated through an easy to understand visual display. OSSE sponsored listings also include a ‘live’ hyperlink to the registration page for easy enrollment in courses. See below.

COURSE LISTING EXAMPLE:

DATE OF OFFERING → April 18

TITLE OF OFFERING → SEASONS IN THE PARK!
ROCK CREEK PARK NATURE CENTER

NUMBER OF “CLOCK HOURS” EARNED → 2.0 Professional Learning Units (clock hours)

CORE KNOWLEDGE AREA COVERED → CKA: Curriculum

COURSE DESCRIPTION → Join Park Ranger Maggie Zadorozny for a field experience geared toward teachers of children ages 2 to 5 years old! Discover the beauty of Rock Creek Park in any season. Hike the nearby forest and look for seasonal changes, meet some of the animals that call the District of Columbia home, and learn about the vast resources available to support.

EVENT DETAILS → **Date:** April 18, 2014
Time: 3 - 6 p.m.
Location: 5200 Glover St. NW

REGISTRATION INSTRUCTIONS → **Register by Web:** osse.dc.gov
Cost: FREE
Sponsor(s): Rock Creek Park Nature Center and OSSE
(for OSSE sponsored offerings ‘click’ the link for easy web registration) **Please cancel 48 hours in advance in order to provide spaces for other participants.**

POLICIES AND PROCEDURES:

OSSE-sponsored trainings are offered at no cost to participants. In order to continue providing these dynamic resources for free, we ask that each participant who registers for an OSSE-sponsored training adhere to the following conditions:

- Plan to arrive at least 5-10 minutes before the training is scheduled to begin.
- If you are unable to attend training you've registered for, please email Diane.Mason@dc.gov at least 48 hours in advance so that your ticket can be used for another participant (no phone calls).
- If arriving late, please note that trainers reserve the right to deny entrance after a 10-minute grace period.
- If arriving late, any certificate issued will reflect your actual professional learning units/clock hours earned and may be sent via e-mail based on trainer preference.
- If arriving late due to an unforeseen emergency, please call (202) 727-6436 to alert the OSSE front desk staff.

FREQUENTLY ASKED QUESTIONS

Where is 810 1st Street NE?

OSSE is located at 810 First St. NE, three blocks behind Union Station. When exiting the station, turn toward the right and walk away from Massachusetts Avenue. Continue down First Street until you see the sign labeled 810. We are located in the same building as the DC Water and Sewer Authority.

What is the Closest Metro Station to OSSE?

The closest Metro Station is the Union Station Metro (Red Line).

Is there parking at 810 1st Street NE?

Yes. There are a number of parking garages near 810 First Street NE. The prices range from \$15 to \$25 dollars. There is also limited 2-hour on-street parking. Please note: We recommend taking the Metro or car pool. It generally takes 15 minutes to find a parking spot and get to the training location. Please plan accordingly.

Do I need an ID to attend training?

Yes. In order to enter the building, you will need to show an identification card to sign in with the guard. There is a 100% ID Check policy to enter the building.

What happens if I am late to an OSSE-sponsored training?

If arriving late due to an unforeseen emergency (Metro, Police, Fire, Lost, etc.) please call (202) 727-6436 to alert the OSSE front desk staff. Trainers reserve the right to deny entrance after a 10-minute grace period. Any certificate issued will reflect your actual professional learning units/clock hours earned and may be sent via e-mail based on trainer preference.

Do I need to print my Eventbrite ticket for entry?

Yes. The Eventbrite Ticket serves as proof of your registration. In the event that a training is over-booked, preference is given to participants whom are registered to attend.

Do I have to register to attend a training?

Yes. In the event that a training is over-booked, preference is given to participants whom are registered to attend. Walk-in participants are not guaranteed a seat nor training materials.

What should I do if I am no longer able to attend a class I registered for?

If you are unable to attend a training you've registered for, please email Diane.Mason@dc.gov at least 48 hours in advance so that your ticket can be used for another participant (no phone calls).

When we meet at a community site (Smithsonian, Rock Creek Park, etc.) and I cannot find the training group, what do I do?

During off-site trainings, there is generally an OSSE staff member and/or trainer to greet participants upon their arrival. If arriving late, locate the information booth at the community site and ask for information regarding your class. If you are still unable to find the training, call the OSSE front desk staff at (202) 727-6436.

My staff needs training; however, I do not see our preferred content listed in the current catalog. What should I do?

There is an OSSE-Certified Trainer Resource Guide located at the back of each Early Learning Course Catalog. The trainers listed provide fee-for-service training and can work with you to customize trainings for your staff's professional development needs. OSSE's Division of Early Learning Professional Development Unit also provides limited on-demand training opportunities. Contact Diane.Mason@dc.gov to inquire about booking OSSE's Division of Early Learning Professional Development Unit for professional development training sessions.

TABLE OF CONTENTS

11	October Offerings
18	November Offerings
24	December Offerings
30	Online Training
37	CPR Resources
40	OSSE-Certified Trainer Resource Guide

CONTACT US!

If you have any questions, comments or concerns, feel free to contact the Early Learning Professional Development Unit via e-mail.

Julie Wennekes, Supervisory Professional Development Specialist • Julie.Wennekes@dc.gov

Diane Mason, Program Support Specialist • Diane.Mason@dc.gov



Child Care and Development Block Grant Act (CCDBG): Required Health and Safety Training

On Nov. 19, 2014, President Obama signed the Child Care and Development Block Grant (CCDBG) Act of 2014 into law. This law reauthorizes the child care program for the first time since 1996, and represents a historic re-envisioning of the Child Care and Development Fund (CCDF) program. The law made significant advancements, including defining health and safety requirements for child care providers.

As part of the law, states¹ must have health and safety training requirements and training and professional development requirements in place by Sept. 30, 2016. Health and safety requirements and training include the following 11 topic areas:

- Administration of medication;
- Prevention and control of infectious diseases;
- Sudden Infant Death Syndrome (SIDS) and use of safe sleep practices;
- Prevention and response to food allergies;
- Building and physical premises safety;
- Prevention of shaken baby syndrome and abusive head trauma;
- Emergency preparedness and response planning;
- Storage of hazardous materials & bio-contaminants;
- Precautions in transporting children, if applicable²;
- First-aid and cardiopulmonary resuscitation (CPR); and
- Nutrition and physical activity.

Pursuant to the CCDBG Act of 2014 and 29 DCMR 333.2(a), 29 DCMR 338.2(g), and 29 DCMR 352.2(b), new and existing directors, caregivers, and teachers must complete health and safety training in the 11 topic areas listed above. For new directors, caregivers, and teachers, health and safety training in the 11 topic areas must be completed either pre-service or within an orientation period not to exceed three months from the employee's first day of employment. For existing directors, caregivers, and teachers, health and safety training in the 11 topic areas must be completed no later than Sept. 30, 2017. Evidence that new and existing directors, caregivers, and teachers have completed health and safety training in the 11 topic areas must be maintained at the child development facility and be readily available for inspection.

To assist new and existing directors, caregivers, and teachers in meeting these new training requirements, the Division of Early Learning's Professional Development Unit is offering both synchronous (i.e., classroom) and asynchronous (i.e., online) courses that cover the 11 topic areas.

¹ The term "state" means the 50 states and the District of Columbia.

² This training topic is only required for providers that offer transportation services to children.

CHILD DEVELOPMENT ASSOCIATES TRAINING PROGRAM



SPACE IS LIMITED * FREE CDA TRAINING * EARN 120 CLOCK HOURS

Information Sessions will be held on:

1. October 18, 2016 | 6:30 – 8:30 p.m.
Sunshine Early Learning Center
4224 Sixth St. SE
2. October 20, 2016 | 10 a.m. – 12 p.m.
Sunshine Early Learning Center
4224 Sixth St. SE

CDA DIRECT ASSESSMENT COURSES (120 HOURS)

Nov. 1, 2016 – March 24, 2017

CDA RENEWAL COURSES (45 HOURS)

Jan. 14, 2017 – April 8, 2017

Special Class Offerings include, but are not limited to:

- First Aid/CPR
- DC Common Core Early Learning Standards Training
- Child Abuse and Neglect
- Health and Safety Training

This program is in partnership with the Office of the State Superintendent of Education (OSSE)

For more information, contact Loraine Crews at (202) 561-1100 or email at scf.pdicda@gmail.com



Give Your Career a Boost!

Join us for the T.E.A.C.H. Pre-Application Workshop and learn how you can earn your Early Childhood Education degree debt-free!

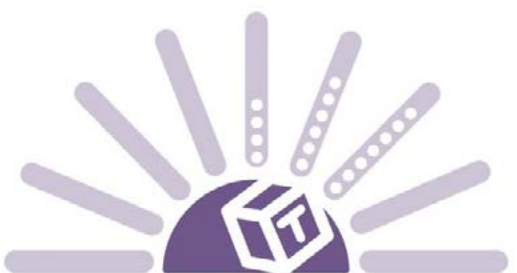
October 14, 2016

6:00pm-7:30pm

1313L Street NW

Washington, DC 20005

[REGISTER NOW!](#)



T.E.A.C.H. Early Childhood®

WASHINGTON, DC

A Project of
National Black Child
Development Institute

★★★
DC PARENT & FAMILY
ENGAGEMENT SUMMIT
YOUR PASSPORT TO EXCELLENCE

 [#ParentSummit](https://twitter.com/ParentSummit)

Saturday, Oct. 22, 2016

9 a.m. – 2:45 p.m.

Registration opens at 8:30 a.m.

Washington Convention Center
801 Mt. Vernon Place, NW

Guest Speaker: Dr. Alvin Thornton, Howard University

**Empowering Parents to Support Their
Children's Education!**

Breakfast and lunch provided!

Register Today!

To register visit <http://bit.ly/2cl7GEb> or by phone at (202) 741-5311

For More Information!

Trinika Snowden at (202) 741-5311 or Trinika.Snowden@dc.gov

osse.dc.gov



facebook.com/ossedc



[@OSSEDC](https://twitter.com/OSSEDC)



OCTOBER OFFERINGS

Oct.

4

Adult/Pediatric First Aid and CPR

Units/Clock Hours: 7 Professional Learning Units

Description: With an emphasis on hands-on-learning, the First Aid/CPR/AED courses give participants the skills to save a life. Participants will also learn how diseases are transmitted and will discover preventative measures for limiting the spread of disease in child care facilities.

Date: Tuesday, Oct. 4, 2016

Time: 9 a.m. - 5 p.m.

Location: OSSE
810 First St. NE, Eighth Floor 806 A & B

Register by Email to: Diane.Mason@dc.gov

Cost: FREE

Sponsor(s): The Coles Group and OSSE

Audience: All staff members involved in providing direct care to children (teachers, assistant teachers, care givers, volunteers, substitutes, directors, etc.)

Oct.

5

Community Emergency Response Training (CERT)

Units/Clock Hours: 6 Professional Learning Units

Description: This course teaches basic disaster response skills, fire safety, light search and rescue, CERT team organization, disaster psychology, terrorism awareness, and disaster medical operations.

Date: Wednesday, Oct. 5, 2016

Time: 9 a.m. – 4 p.m.

Location: OSSE
810 First St. NE Third Floor Grand Hall Side A

Register by Web: <http://bit.ly/2cZcq6C>

Cost: FREE

Sponsor(s): Serve DC and OSSE

Audience: All caregivers, teachers, assistant teachers and directors

Oct.

7

Nutrition for Early Learners

Units/Clock Hours: 2.5 Professional Learning Units

Description: Good nutrition is a key for supporting healthy development and preparing children for school. This training session will teach you the basics of good nutrition for toddlers and preschoolers as well as planning and preparing nutritious meals with a focus on meeting the Child and Adult Care Food Program (CACFP) meal pattern requirements. This training will also cover best practices for creating positive meal times and implementing family-style meal service.

Date: Friday, Oct. 7, 2016

Time: 9:30 a.m. – 12 p.m.

Location: OSSE
810 First St. NE, Eighth Floor 806 B

Register by Web: <http://bit.ly/2dD50XI>

Cost: FREE

Sponsor(s): OSSE – Wellness and Nutrition

Audience: All caregivers, teachers, assistant teachers and directors

Oct.

19

DC Common Core Early Learning Standards 101

Units/Clock Hours: 3 Professional Learning Units

Description: This highly interactive training will provide participants with an understanding of the fundamentals of the District of Columbia Common Core Early Learning Standards (DCCCELS) in order to use the standards to build a foundation for high quality care and education for all children from birth to pre-kindergarten. The training will use group discussions, hands-on activities, and video clips to allow participants to explore the components and structure of the DCCCELS and develop an understanding of developmentally appropriate programming for infants, toddlers and preschool children in the beginning stages of effective implementation.

Date: Wednesday, Oct. 19, 2016

Time: 12:30 – 3:30 p.m.

Location: OSSE
810 First St. NE, Third Floor Grand Hall Side A

Register by Web: <http://bit.ly/2ddfkaO>

Cost: FREE

Sponsor(s): OSSE

Audience: All infant, toddler and preschool teachers, assistant teachers and directors

Oct.

19

DC Common Core Early Learning Standards 201**Units/Clock Hours:** 3 Professional Learning Units

Description: This highly interactive training will provide participants with a deeper dive into the District of Columbia Common Core Early Learning Standards (DCCCELS) to build a foundation for high quality care and education for all children from birth to pre-kindergarten. The training will use group discussions, hands-on activities, and video clips to allow participants to explore the four components of quality lesson planning and teaching: Planning, Implementation, Observation, and Assessment.

Date: Wednesday, Oct. 19, 2016**Time:** 12:30 – 3:30 p.m.

Location: OSSE
810 First St. NE, Third Floor Grand Hall Side B

Register by Web: <http://bit.ly/2dVd5ag>**Cost:** FREE**Sponsor(s):** OSSE

Audience: All infant, toddler and preschool teachers, assistant teachers and directors

Oct.

20

Administration of Medication Training**Units/Clock Hours:** 3 Professional Learning Units

Description: During this course, participants will discuss basic medication administration guidelines, how to properly handle and store medications, and proper documentation of the administration of medication.

Date: Thursday, Oct. 20, 2016**Time:** 9:30 a.m. – 12:30 p.m.

Location: OSSE
810 First St. NE, Eighth Floor 806 A & B

Register by Web: <http://bit.ly/2dVcPbt>**Cost:** FREE**Sponsor(s):** Children's National Medical Center and OSSE

Audience: All infant, toddler and preschool teachers, assistant teachers and directors

Oct.

20

How to Prevent and Control Infectious Diseases**Units/Clock Hours:** 3 Professional Learning Units

Description: This session will provide an overview on how to prevent and control infectious diseases, including information on immunizations and influenza.

Date: Thursday, Oct. 20, 2016**Time:** 1 – 4 p.m.

Location: OSSE
810 First St. NE, Eighth Floor 806 A & B

Register by Web: <http://bit.ly/2dvyI8p>**Cost:** FREE**Sponsor(s):** Children's National Medical Center and OSSE

Audience: All infant, toddler and preschool teachers, assistant teachers and directors

Oct.

20

Building and Physical Premises Safety and Storage of Hazardous Materials**Units/Clock Hours:** 3 Professional Learning Units

Description: This session will guide child care professionals on how to assess the physical facility, supplies, equipment, and the environmental health of the child care center and/or family child care home. Participants will also learn how to properly use and store toxic substances.

Date: Thursday, Oct. 20, 2016**Time:** 10:30 a.m. – 12 p.m.

Location: OSSE
810 First St. NE, Third Floor Grand Hall Side A

Register by Web: <http://bit.ly/2dxHRHt>**Cost:** FREE

Sponsor(s): DC Fire and Emergency Management Systems and OSSE

Audience: All caregivers, teachers, assistant teachers and directors

Oct.
20

Be an Oral Health Champion

Units/Clock Hours: 1 Professional Learning Unit

Description: Pain from dental conditions may interfere with nutrition, sleep, social engagement, and other activities that impact a child's long-term physical and psychosocial development. This session discusses prevention, and common oral health conditions that affect young children and their families. Participants will learn strategies for increasing their engagement with families and children about oral health issues and help them identify clinical resources in the local community.

Date: Thursday, Oct. 20, 2016

Time: 1:30 – 2:30 p.m.

Location: OSSE
810 First St. NE, Fourth Floor, 4002

Register by Web: <http://bit.ly/2dHE0ZN>

Cost: FREE

Sponsor(s): DC Department of Health and OSSE

Audience: Infant, Toddler and Preschool Teachers, Administrators

Oct.
24

Emergency Preparedness

Units/Clock Hours: 2 Professional Learning Units

Description: Being prepared for emergencies can make a big difference as to whether or not the children in your care and the staff in your program remain safe. In this course, participants will learn about the necessary steps a program should take to ensure preparedness in the event of an emergency, as well as effective strategies to communicate the emergency plan to children, parents, and staff.

Date: Monday, Oct. 24, 2016

Time: 9 – 11 a.m.

Location: OSSE
810 First St. NE, Third Floor Grand Hall Side B

Register by Web: <http://bit.ly/2dvp17h>

Cost: FREE

Sponsor(s): Children's National Medical Center and OSSE

Audience: All caregivers, teachers, assistant teachers and directors

Oct.
24

Food Allergy Prevention and Response

Units/Clock Hours: 3 Professional Learning Units

Description: This session will discuss the preparation and handling of food for children of all ages, including the consumption of formula, human milk, and solid foods. Participants will also learn how to recognize and respond to food allergies and how to create and follow individual care plans for children with food allergies.

Date: Monday, Oct. 24, 2016

Time: 9 a.m. - 12 p.m.

Location: OSSE
810 First St. NE, Third Floor Grand Hall Side A

Register by Web: <http://bit.ly/2dVmUsG>

Cost: FREE

Sponsor(s): Children's National Medical Center and OSSE

Audience: All infant, toddler and preschool teachers, assistant teachers and directors

Oct.
24

How to Prevent and Control Infectious Diseases

Units/Clock Hours: 3 Professional Learning Units

Description: This session will provide an overview on how to prevent and control infectious diseases, including information on immunizations and influenza.

Date: Monday, Oct. 24, 2016

Time: 12:30 – 3:30 p.m.

Location: OSSE
810 First St. NE, Third Floor Grand Hall Side A

Register by Web: <http://bit.ly/2dhC5aZ>

Cost: FREE

Sponsor(s): Children's National Medical Center and OSSE

Audience: All infant, toddler and preschool teachers, assistant teachers and directors

Oct.

24

How to Administer the Ages and Stages Parent Questionnaire Developmental Screening Tools (ASQ-3: Social-Emotional)

Units/Clock Hours: 3 Professional Learning Units

Description: In this workshop, participants will learn to administer and score the ASQ-3 and the ASQ: SE developmental screening tools. We will role-play how to relay important information to parents and what to do next if you have a concern about a child's development.

Date: Monday, Oct. 24, 2016

Time: 1 – 4 p.m.

Location: OSSE
810 First St. NE, Third Floor Grand Hall Side B

Register by Web: <http://bit.ly/2dHJFin>

Cost: FREE

Sponsor(s): Early Stages and OSSE

Audience: Early Childhood Teachers, Administrators, Program Support Staff

Oct.

25

Trauma and Resilience: Building Strength in Children

Units/Clock Hours: 3 Professional Learning Units

Description: In this workshop, participants will learn how trauma can affect a child's developing brain. Participants will learn how to identify signs of trauma, including shaken baby syndrome and abusive head trauma, and how to foster resilience in children so that they can develop into emotionally strong adults.

Date: Tuesday, Oct. 25, 2016

Time: 1 – 4 p.m.

Location: OSSE
810 First St. NE, Eighth Floor 806 A & B

Register by Web: <http://bit.ly/2dVqanF>

Cost: FREE

Sponsor(s): Early Stages and OSSE

Audience: Early childhood teachers, administrator, program support staff

Oct.

25

How to Provide a Safe Sleep Environment for Infants Workshops for Preventing Sudden Infant Death Syndrome (SIDS) and Sudden Unexpected Infant Death (SUID)

Units/Clock Hours: 2 Professional Learning Units

Description: Participants in this course will identify behaviors that increase the risk of SIDS and sleep related infant deaths, learn ways to reduce the risk of SIDS in child care settings, and learn how to communicate with parents and other caregivers about safe sleep practices. This course reflects the American Academy of Pediatrics' revised recommendations for a safe sleep environment.

Date: Tuesday, Oct. 25, 2016

Time: 10 a.m. – 12 p.m.

Location: Department of Health
899 North Capitol St. NE, Third Floor

Register by Web: <http://bit.ly/2dxO71Q>

Cost: FREE

Sponsor(s): DC Department of Health and OSSE

Audience: All teachers, assistant teachers, care givers, volunteers, substitutes, directors

Oct.

26

Building a Solid Foundation: Social Emotional Development in Young Children

Units/Clock Hours: 3 Professional Learning Units

Description: This course gleans content from the Center on the Social Emotional Foundations of Early Learning (CSEFEL) infant and toddler training modules. Participants will engage in hands-on activities, which illustrate the importance of positive social emotional climates for children from birth through age three.

Date: Wednesday, Oct. 26, 2016

Time: 10 a.m. – 1 p.m.

Location: OSSE
810 First St. NE, Third Floor Grand Hall Side A

Register by Web: <http://bit.ly/2dNzEb>

Cost: FREE

Sponsor(s): OSSE

Audience: Infant, Toddler and Preschool Teachers, Administrators

Oct.
26

Parent, Family and Community Engagement- Measuring What Matters

Units/Clock Hours: 3 Professional Learning Units

Description: Families come in our programs with a wide range of backgrounds, experiences, and circumstances. Every family is different and unique in its own way. An active family engagement program can help centers and schools improve your children's school readiness and create lasting change for families.

Date: Wednesday, Oct. 26, 2016

Time: 9:30 a.m. – 12:30 p.m.

Location: OSSE
810 First St. NE, Third Floor Grand Hall Side B

Register by Web: <http://bit.ly/2dNG9jD>

Cost: FREE

Sponsor(s): OSSE

Audience: Family Service Workers; Administrators

Oct.
27

Act Early: When Children Fall Behind in their Developmental Milestones

Units/Clock Hours: 3 Professional Learning Units

Description: Acting early can greatly improve a child's quality of life, prevent abuse, and improve early education outcomes. In this training, participants will learn about District programs, DC Early Intervention Strong Start and Early Stages. Participants will also receive instruction on how to prevent and recognize signs and symptoms of shaken baby syndrome/abusive head trauma.

Date: Thursday, Oct. 27, 2016

Time: 1 – 4 p.m.

Location: OSSE
810 First St. NE, Eighth Floor 806 A & B

Register by Web: <http://bit.ly/2dvt8zZ>

Cost: FREE

Sponsor(s): Early Stages and OSSE

Audience: All teachers, assistant teachers, care givers, volunteers, substitutes, directors

Oct.
28

Child Abuse Prevention and Mandatory Reporter Training

Units/Clock Hours: 3 Professional Learning Units

Description: Mandatory Reporter Training contains definitions, examples, and signs of child abuse and neglect, numerous resources and DC legal codes, helpful tips for mandatory reporters, and interactive learning checks to confirm you learned important concepts. After you complete this training, you should be able to understand your legal obligations as a mandatory reporter; define the types of child abuse and neglect; recognize signs of child abuse and neglect; identify groups of children who may be at a higher risk for abuse or neglect, and more.

Date: Friday, Oct. 28, 2016

Time: 9:30 a.m. – 12:30 p.m.

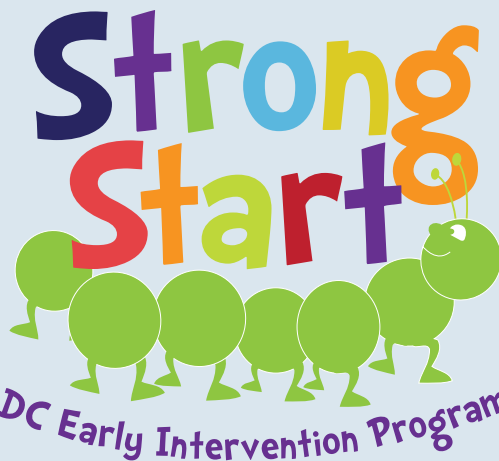
Location: OSSE
810 First St. NE, Eighth Floor 806 A & B

Register by Web: <http://bit.ly/2dhDZlr>

Cost: FREE

Sponsor(s): OSSE

Audience: All teachers, assistant teachers, care givers, volunteers, substitutes, directors



Open to children ages 6 mos. - 3 yrs. • Free to residents of DC • Pre-registration is required

Playgroups are available Monday - Thursday and on selected Saturdays throughout the year across seven different locations within the Washington, DC area.

2016 – 2017 Strong Start Play Group Schedule

DAY	LOCATION	SESSION(S)(in months)
MONDAY	TENLEY-FRIENDSHIP LIBRARY 4450 Wisconsin Ave. NW – across from the Tenley Metro Station	12 – 24: 10 – 11 a.m. 24 – 36: 11 – 12 p.m.
	COLUMBIA HEIGHTS 1371 Harvard St. NW – on the corner of 14 th St. and Harvard St.	12 – 24: 10 – 11 a.m. 6 – 12: 11:30 a.m. – 12:15 p.m.
TUESDAY	ANACOSTIA NEIGHBORHOOD LIBRARY 1800 Good Hope Rd. SE	24 – 36: 10 – 11 a.m. 12 – 24: 11 a.m. – 12 p.m.
	SOUTHWEST LIBRARY 900 Wesley Pl. SW	24 – 36: 10 – 11 p.m. 12 – 24: 11:15 a.m. – 12:15 p.m.
WEDNESDAY	HILL CENTER AT THE OLD NAVAL HOSPITAL 921 Pennsylvania Ave. SE	24 – 36: 9 – 10:15 a.m. 12 – 24: 10:30 – 11:30 a.m.
	COLUMBIA HEIGHTS 1371 Harvard St. NW – on the corner of 14 th St. and Harvard St.	6 – 12: 11:45 a.m. – 12:30 p.m. 24 – 36: 10 – 11:00 a.m.
THURSDAY	COLUMBIA HEIGHTS 1371 Harvard St. NW – on the corner of 14 th St. and Harvard St.	12 – 24: 11:15 a.m. – 12:15 p.m.
	MARTHA'S TABLE (2x/month) 2114 14 th St. NW	3+ & 24 - 36: 9 – 10:15 a.m. 12 – 24: 10:30 – 11:30 a.m.
SATURDAY (**2x/month Spanish or 1x/month Developmental Inclusive)	COLUMBIA HEIGHTS (2x/month Spanish) 1371 Harvard St. NW – on the corner of 14 th St. and Harvard St.	24 – 36+: 10:30 – 11:30 a.m. 24 – 36: 10 – 11 a.m.
	COLUMBIA HEIGHTS (1x/month) 1371 Harvard St. NW – on the corner of 14 th St. and Harvard St.	12 – 24: 11:15 a.m. – 12:15 p.m.

CDA PROGRAM

(Child Development Associate)

APPLICATION REQUIREMENTS

- High School Diploma/GED
- 18 years old and older
- Current profession child care experience in the District of Columbia (paid or volunteer) within the group setting you are applying for (Infants/Toddler OR Preschool)

*We will need a letter from the director of your facility approving of at least 120 hours of volunteer/work experience in a licensed center or family child care home (you will need to complete 480 hours by the end of the program).

For questions and appointment please contact:

Mario Platero
CDA Coordinator
CentroNía Institute
(202) 332-4200 Ext. 1142
mplatero@centronia.org

Find and print the application at: www.centronia.org

CentroNía
INSTITUTE

En Español

PROGRAMA CDA

(Asociado en Desarrollo Infantil)

REQUISITOS PARA APLICAR:

- Copia de su certificado de secundaria o su equivalente (GED)
- Tener por lo menos 18 años de edad
- Poseer experiencia profesional y actual en cuidado infantil en el Distrito de Columbia (trabajo remunerado o voluntariado) con niños en el grupo de edades para el cual usted está aplicando. (Bebés/Toddlers O Preescolares)

* Necesitaremos una carta del director (a) de su centro haciendo constar que usted tiene al menos 120 horas de experiencia voluntaria o profesional en un centro con licencia o en un hogar de guardería familiar (usted tendrá que completar 480 horas al final del programa)

Para preguntas y citas Por favor contacte a:

Mario Platero
Coordinador de CDA
CentroNía Institute
(202) 332-4200 Ext.1142
mplatero@centronia.org

Encuentre e imprima la aplicación en: www.centronia.org



NOVEMBER OFFERINGS

Nov.
1

Creating Learning Spaces for Preschool Children

Units/Clock Hours: 3 Professional Learning Units

Description: Participants will learn how to create learning environments that are safe, attractive, comfortable, and well designed in order to support goals for children and free classroom staff to observe and interact with them in positive ways.

Date: Tuesday, Nov. 1, 2016

Time: 9:30 a.m. – 12:30 p.m.

Location: OSSE
810 Frist St. NE, Third Floor Grand Hall Side A

Register by Web: <http://bit.ly/2dhljrk>

Cost: FREE

Sponsor(s): OSSE

Audience: Preschool teachers and assistant teachers; Administrators

Nov.
1

Administration of Medication (AOM) Training

Units/Clock Hours: 3 Professional Learning Units

Description: During this course, participants will discuss basic medication administration guidelines, proper care of medications, and reportable conditions based on medication reactions.

Date: Tuesday, Nov. 1, 2016

Time: 9 a.m. – 12 p.m.

Location: OSSE
810 First St. NE, Third Floor Grand Hall Side B

Register by Web: <http://bit.ly/2cV3dQW>

Cost: FREE

Sponsor(s): Children's National Medical Center and OSSE

Audience: All infant, toddler and preschool teachers, assistant teachers and directors

Nov.
1

Food Allergy Prevention and Response

Units/Clock Hours: 3 Professional Learning Units

Description: This session will discuss the preparation and handling of food for children of all ages, including the consumption of formula, human milk, and solid foods. Participants will also learn how to recognize and respond to food allergies and how to create and follow individual care plans for children with food allergies.

Date: Tuesday, Nov. 1, 2016

Time: 1 - 4 p.m.

Location: OSSE
810 First St. NE, Third Floor Grand Hall Side B

Register by Web: <http://bit.ly/2dHOFUd>

Cost: FREE

Sponsor(s): Children's National Medical Center and OSSE

Audience: All infant, toddler and preschool teachers, assistant teachers and directors

Nov.
3

Community Emergency Response Training (CERT)

Units/Clock Hours: 6 Professional Learning Units

Description: This course teaches basic disaster response skills, fire safety, light search and rescue, CERT team organization, disaster psychology, terrorism awareness, and disaster medical operations.

Date: Thursday, Nov. 3, 2016

Time: 9 a.m. – 4 p.m.

Location: OSSE
810 First St. NE, Third Floor Grand Hall Side A

Register by Web: <http://bit.ly/2dO2lcD>

Cost: FREE

Sponsor(s): Serve DC and OSSE

Audience: All caregivers, teachers, assistant teachers and directors

Nov.

4

Nutrition for Early Learners**Units/Clock Hours:** 2.5 Professional Learning Units

Description: Good nutrition is key for supporting healthy development and preparing children for school. This training session will teach the basics of good nutrition for toddlers and preschoolers as well as planning and preparing nutritious meals with a focus on meeting the Child and Adult Care Food Program (CACFP) meal pattern requirements. This training will also cover best practices for creating positive meal times and implementing family-style meal service.

Date: Friday, Nov. 4, 2016**Time:** 9:30 a.m. – 12 p.m.**Location:** OSSE
810 First St. NE, Third Floor Grand Hall Side A**Register by Web:** <http://bit.ly/2cWNRXb>**Cost:** FREE**Sponsor(s):** OSSE – Wellness and Nutrition**Audience:** All caregivers, teachers, assistant teachers and directors

Nov.

4

Child Abuse Prevention and Mandatory Reporter Training**Units/Clock Hours:** 3 Professional Learning Units

Description: Mandatory Reporter Training contains definitions, examples, and signs of child abuse and neglect, numerous resources and DC legal codes, helpful tips for mandatory reporters, and interactive learning checks to confirm you learned important concepts. After you complete this training, you should be able to understand your legal obligations as a mandatory reporter; define the types of child abuse and neglect; Recognize signs of child abuse and neglect; identify groups of children who may be at a higher risk for abuse or neglect, and more.

Date: Friday, Nov. 4, 2016**Time:** 1 – 4 p.m.**Location:** OSSE
810 First St. NE, Third Floor Grand Hall Side A**Register by Web:** <http://bit.ly/2dvyY4s>**Cost:** FREE**Sponsor(s):** OSSE**Audience:** All teachers, assistant teachers, care givers, volunteers, substitutes, directors

Nov.

8

Adult/Pediatric First Aid and CPR**Units/Clock Hours:** 7 Professional Learning Units

Description: With an emphasis on hands-on-learning, the First Aid/CPR/AED courses give participants the skills to save a life. Participants will also learn how diseases are transmitted and will discover preventative measures for limiting the spread of disease in child care facilities.

Date: Tuesday, Nov. 8, 2016**Time:** 9 a.m. - 5 p.m.**Location:** OSSE
810 First St. NE, Eighth Floor 806 A & B**Register by Email:** Diane.Mason@dc.gov**Cost:** FREE**Sponsor(s):** The Coles Group and OSSE**Audience:** All staff members involved in providing direct care to children (teachers, assistant teachers, care givers, volunteers, substitutes, directors, etc.)

Nov.

9

DC Common Core Early Learning Standards 201**Units/Clock Hours:** 3 Professional Learning Units

Description: This highly interactive training will provide participants with a deeper dive into the District of Columbia Common Core Early Learning Standards (DCCCELS) to build a foundation for high quality care and education for all children from birth to pre-kindergarten. The training will use group discussions, hands-on activities, and video clips to allow participants to explore the four components of quality lesson planning and teaching: Planning, Implementation, Observation, and Assessment.

Date: Wednesday, Nov. 9, 2016**Time:** 12:30 – 3:30 p.m.**Location:** OSSE
810 First St. NE, Eighth Floor 806 A & B**Register by Web:** <http://bit.ly/2dHQTmq>**Cost:** FREE**Sponsor(s):** OSSE**Audience:** All infant, toddler and preschool teachers, assistant teachers and directors

Nov.

9

Building a Vibrant Early Childhood Education Business**Units/Clock Hours:** 3 Professional Learning Units

Description: Participants will learn the basic financial systems that support a successful early childhood education business plan and learn how to interface with the banking institutions in order to sustain strong program operations.

Date: Wednesday, Nov. 9, 2016

Time: 4 p.m. - 7 p.m.

Location: OSSE
810 First St. NE, Eighth Floor 806 A & B

Register by Web: <http://bit.ly/2dvLBKd>

Cost: FREE

Sponsor(s): OSSE, Southeast Children's Fund Professional Development Institute and Dr. Robert Gundling

Audience: Infant, Toddler, Preschool Teachers, Teachers, Administrators

Nov.

10

Building and Physical Premises Safety and Handling and Storage of Hazardous Materials**Units/Clock Hours:** 3 Professional Learning Units

Description: This session will guide child care professionals on how to assess the physical facility, supplies, equipment, and the environmental health of the child care center and/or family child care home. Participants will also learn how to properly use and store toxic substances.

Date: Thursday, Nov. 10, 2016

Time: 10:30 a.m. – 12 p.m.

Location: OSSE
810 First St. NE, Third Floor Grand Hall A

Register by Web: <http://bit.ly/2e5Y8oU>

Cost: FREE

Sponsor(s): DC Fire and Emergency Management System and OSSE

Audience: All caregivers, teachers, assistant teachers and directors

Nov.

10

Act Early: When Children Fall Behind in their Developmental Milestones**Units/Clock Hours:** 3 Professional Learning Units

Description: Acting early can greatly improve a child's quality of life, prevent abuse, and improve early education outcomes. In this training, participants will learn about District programs, DC Early Intervention Strong Start and Early Stages. Participants will also receive instruction on how to prevent and recognize signs and symptoms of shaken baby syndrome/abusive head trauma.

Date: Thursday, Nov. 10, 2016

Time: 1 – 4 p.m.

Location: OSSE
810 First St. NE, Eighth Floor 806 A & B

Register by Web: <http://bit.ly/2cWQLv4>

Cost: FREE

Sponsor(s): Early Stages and OSSE

Audience: All caregivers, teachers, assistant teachers and directors who are in direct contact with children, including substitute caregivers/teachers and volunteers

Nov.

14

How to Prevent and Control Infectious Diseases**Units/Clock Hours:** 3 Professional Learning Units

Description: This session will provide an overview on how to prevent and control infectious diseases, including information on immunizations and influenza.

Date: Monday, Nov. 14, 2016

Time: 8:30 – 11:30 a.m.

Location: OSSE
810 First St. NE, Eighth Floor 806 B

Register by Web: <http://bit.ly/2d6kapO>

Cost: FREE

Sponsor(s): Children's National Medical Center and OSSE

Audience: All infant, toddler and preschool teachers, assistant teachers and directors

Nov.

14

Breathing Easy: Asthma Training for Caregivers of Young Children**Units/Clock Hours:** 2 Professional Learning Units

Description: This training will provide professionals with knowledge of causes surrounding early childhood wheezing and asthma, how to manage children with asthma symptoms, and how to modify the center or school environment to best prevent respiratory problems. Participants will discuss and practice effective techniques for medication administration at centers, and how to address environmental aspects of asthma control with families, especially tobacco smoke.

Date: Monday, Nov. 14, 2016**Time:** 12 – 2 p.m.**Location:** OSSE
810 First St. NE, Eighth Floor 806 B**Register by Web:** <http://bit.ly/2dxZzub>**Cost:** FREE**Sponsor(s):** Children's National Medical Center and OSSE

Nov.

15

Observing and Assessing Young Children**Units/Clock Hours:** 3 Professional Learning Units

Description: During this interactive session participants will learn how to objectively observe and document observations of children, and use this information to help plan classroom activities.

Date: Tuesday, Nov. 15, 2016**Time:** 9:30 a.m. – 12:30 p.m.**Location:** OSSE
810 First St. NE, Eighth Floor 806 A & B**Register by Web:** <http://bit.ly/2dhOjQO>**Cost:** FREE**Sponsor(s):** OSSE**Audience:** Infant, Toddler and Preschool Teachers, Assistant Teachers, Administrators

Nov.

15

Trauma and Resilience: Building Strength in Children**Units/Clock Hours:** 3 Professional Learning Units

Description: In this workshop, participants will learn how trauma can affect a child's developing brain. Participants will learn how to identify signs of trauma, including shaken baby syndrome and abusive head trauma, and how to foster resilience in children so that they can develop into emotionally strong adults.

Date: Tuesday, Nov. 15, 2016**Time:** 1 – 4 p.m.**Location:** OSSE
810 First St. NE, Eighth Floor 806 A & B**Register by Web:** <http://bit.ly/2dVu2BD>**Cost:** FREE**Sponsor(s):** Early Stages and OSSE**Audience:** All caregivers, teachers, assistant teachers and directors who are in direct contact with children, including substitute caregivers/teachers and volunteers

Nov.

16

Building a Solid Foundation: Social Emotional Development in Young Children**Units/Clock Hours:** 3 Professional Learning Units

Description: This course gleans content from the Center on the Social Emotional Foundations of Early Learning (CSEFEL) infant and toddler training modules. Participants will engage in hands-on activities, which illustrate the importance of positive social emotional climates for children from birth through age 3.

Date: Wednesday, Nov. 16, 2016**Time:** 10 a.m. – 1 p.m.**Location:** OSSE
810 First St. NE, Ninth Floor 9014**Register by Web:** <http://bit.ly/2dvCtYM>**Cost:** FREE**Sponsor(s):** OSSE**Audience:** Infant, Toddler and Preschool Teachers, Administrators

Nov.
17**Emergency Preparedness****Units/Clock Hours:** 2 Professional Learning Units

Description: Being prepared for emergencies can make a big difference as to whether or not the children in your care and the staff in your program remain safe. In this course, participants will learn about the necessary steps a program should take to ensure preparedness in the event of an emergency, as well as effective strategies to communicate the emergency plan to children, parents, and staff.

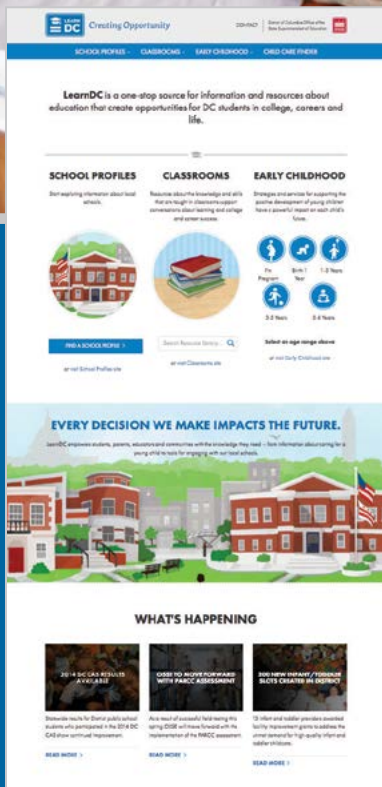
Date: Thursday, Nov. 17, 2016**Time:** 9 – 11 a.m.**Location:** OSSE
810 First St. NE, Eighth Floor 806 A & B**Register by Web:** <http://bit.ly/2dByvKb>**Cost:** FREE**Sponsor(s):** Children's National Medical Center and OSSE**Audience:** All caregivers, teachers, assistant teachers and directorsNov.
17**How to Administer the Ages and Stages Parent Questionnaire Developmental Screening Tools (ASQ-3: Social-Emotional)****Units/Clock Hours:** 3 Professional Learning Units

Description: In this workshop, participants will learn to administer and score the ASQ-3 and the ASQ: SE developmental screening tools. We will role-play how to relay important information to parents and what to do next if you have a concern about a child's development.

Date: Thursday, Nov. 17, 2016**Time:** 1 – 4 p.m.**Location:** OSSE
810 First St. NE, Eighth Floor 806 A & B**Register by Web:** <http://bit.ly/2d6qkpX>**Cost:** FREE**Sponsor(s):** Early Stages and OSSE**Audience:** Early Childhood Teachers, Administrators, Program Support StaffNov.
22**How to Provide a Safe Sleep Environment for Infants Workshops for Preventing Sudden Infant Death Syndrome (SIDS) and Sudden Unexpected Infant Death (SUID)****Units/Clock Hours:** 2 Professional Learning Units

Description: Participants in this course will identify behaviors that increase the risk of SIDS and sleep related infant deaths, learn ways to reduce the risk of SIDS in child care settings, and learn how to communicate with parents and other caregivers about safe sleep practices. This course reflects the American Academy of Pediatrics' revised recommendations for a safe sleep environment.

Date: Tuesday, Nov. 22, 2016**Time:** 10 a.m. – 12 p.m.**Location:** Department of Health
899 North Capitol St. NE, Third Floor**Register by Web:** <http://bit.ly/2d6oVzV>**Cost:** FREE**Sponsor(s):** DC Department of Health and OSSE**Audience:** All teachers, assistant teachers, care givers, volunteers, substitutes, directors



An Online Community of Educational Learning and Discovery

Start learning today at LearnDC.org

Learn DC.org empowers students, parents, parents, educators and communities with the knowledge they need to be successful. LearnDC.org offers a wealth of data on local schools, including student achievement and school performance, and provides resources for parents seeking quality child care.

An Initiative of the Office of the State Superintendent of Education



osse.dc.gov

facebook.com/ossedc

@OSSEDC

202.727.6436



DECEMBER OFFERINGS

Dec.
1

Starting Strong: Nutrition for Infants and Toddlers

Units/Clock Hours: 2.5 Professional Learning Units

Description: This session will help participants better understand developmental readiness for introducing solid foods to infants and the process of transitioning to table foods. Participants will also be provided with ways to promote good nutrition that will prepare children for a lifetime of growing and learning. This two clock-hour training will also cover the Child and Adult Care Food Program (CACFP) infant meal pattern and feeding guidelines, which all licensed providers are required to follow.

Date: Thursday, Dec. 1, 2016

Time: 9:30 a.m. - 12:00 p.m.

Location: OSSE
810 First St. NE, Eighth Floor 806 A

Register by Web: <http://bit.ly/2dy6vru>

Cost: FREE

Sponsor(s): OSSE

Audience: Infant, Toddler, Pre-k, Teachers, Administrators

Dec.
1

Building and Physical Premises Safety and Handling and Storage of Hazardous Materials

Units/Clock Hours: 3 Professional Learning Units

Description: This session will guide child care professionals on how to assess the physical facility, supplies, equipment, and the environmental health of the child care center and/or family child care home. Participants will also learn how to properly use and store toxic substances.

Date: Thursday, Dec. 1, 2016

Time: 10:30 a.m. – 12 p.m.

Location: OSSE
810 First St. NE, Eighth Floor 806 B

Register by Web: <http://bit.ly/2dVyOu2>

Cost: FREE

Sponsor(s): DC Fire and Emergency Management Systems and OSSE

Audience: All caregivers, teachers, assistant teachers and directors

Dec.
2

Food Allergy Prevention and Response

Units/Clock Hours: 3 Professional Learning Units

Description: This session will discuss the preparation and handling of food for children of all ages, including the consumption of formula, human milk, and solid foods. Participants will also learn how to recognize and respond to food allergies and how to create and follow individual care plans for children with food allergies.

Date: Friday, Dec. 2, 2016

Time: 10 a.m. - 1 p.m.

Location: OSSE
810 First St. NE, Eighth Floor 806 A & B

Register by Web: <http://bit.ly/2dl2bqI>

Cost: FREE

Sponsor(s): Children's National Medical Center and OSSE

Audience: All infant, toddler and preschool teachers, assistant teachers and directors

Dec.
2

Child Abuse Prevention and Mandatory Reporter Training

Units/Clock Hours: 3 Professional Learning Units

Description: Mandatory Reporter Training contains definitions, examples, and signs of child abuse and neglect, numerous resources and DC legal codes, helpful tips for mandatory reporters, and interactive learning checks to confirm you learned important concepts. After you complete this training, you should be able to understand your legal obligations as a mandatory reporter; define the types of child abuse and neglect; Recognize signs of child abuse and neglect; identify groups of children who may be at a higher risk for abuse or neglect, and more.

Date: Friday, Dec. 2, 2016

Time: 1:30 – 4:30 p.m.

Location: OSSE
810 First St. NE, Eighth Floor 806 A & B

Register by Web: <http://bit.ly/2cWYKli>

Cost: FREE

Sponsor(s): OSSE

Audience: All teachers, assistant teachers, care givers, volunteers, substitutes, directors



Adult/Pediatric First Aid and CPR

Units/Clock Hours: 7 Professional Learning Units

Description: With an emphasis on hands-on-learning, the First Aid/CPR/AED courses give participants the skills to save a life. Participants will also learn how diseases are transmitted and will discover preventative measures for limiting the spread of disease in child care facilities.

Date: Tuesday, Dec. 6, 2016

Time: 9 a.m. - 5 p.m.

Location: OSSE
810 First St. NE, Eighth Floor 806 A & B

Register by Email: Diane.Mason@dc.gov

Cost: FREE

Sponsor(s): The Coles Group and OSSE

Audience: All staff members involved in providing direct care to children (teachers, assistant teachers, care givers, volunteers, substitutes, directors, etc.)



Environments for Infant/Toddler Group Care

Units/Clock Hours: 3 Professional Learning Units

Description: This session focuses on the intentional use of space, equipment, and materials to support children's development and learning in infant/toddler care programs, and illustrates eight concepts that are at the heart of high quality infant care environments.

Date: Wednesday, Dec. 7, 2016

Time: 9:30 a.m. - 12:30 p.m.

Location: OSSE
810 First St. NE, Eighth Floor 806 A & B

Register by Web: <http://bit.ly/2dVI4Xq>

Cost: FREE

Sponsor(s): OSSE

Audience: Infant and Toddler Teachers, Assistant Teachers and Administrators



Parent, Family and Community Engagement- Measuring What Matters

Units/Clock Hours: 3 Professional Learning Units

Description: Families come in our programs with a wide range of backgrounds, experiences, and circumstances. Every family is different and unique in its own way. An active family engagement program can help centers and schools improve your children's school readiness and create lasting change for families.

Date: Wednesday, Dec. 7, 2016

Time: 1 - 4 p.m.

Location: OSSE
810 First St. NE, Eighth Floor 806 A & B

Register by Web: <http://bit.ly/2dVHZTG>

Cost: FREE

Sponsor(s): OSSE

Audience: Family Service Workers; Administrators



Community Emergency Response Training (CERT)

Units/Clock Hours: 6 Professional Learning Units

Description: This course teaches basic disaster response skills, fire safety, light search and rescue, CERT team organization, disaster psychology, terrorism awareness, and disaster medical operations.

Date: Thursday, Dec. 8, 2016

Time: 9 a.m. - 4 p.m.

Location: OSSE
810 First St. NE, Eighth Floor 806 A & B

Register by Web: <http://bit.ly/2dhUiF9>

Cost: FREE

Sponsor(s): Serve DC and OSSE

Audience: All caregivers, teachers, assistant teachers and directors

Dec.

8

Balancing Healthy Food with Daily Exercise for Young Children**Units/Clock Hours:** 3 Professional Learning Units

Description: This training will demonstrate how important daily exercise and proper nutrition is for the healthy well-being of young children. Participants will be given a “Healthy Toolbox” that can be utilized in the classroom as well as with parents. This toolbox will promote and encourage daily healthy exercise and a healthy diet for the development of healthy young children.

Date: Thursday, Dec. 8, 2016**Time:** 9:30 a.m. – 12:30 p.m.**Location:** OSSE
810 First St. NE, Third Floor Grand Hall Side B**Register by Web:** <http://bit.ly/2dydTTw>**Cost:** FREE**Sponsor(s):** BEE K3-Beyond Expectations in Education and OSSE**Audience:** All teachers, assistant teachers, care givers, directors

Dec.

8

Balancing Healthy Food with Daily Exercise for Young Children**Units/Clock Hours:** 3 Professional Learning Units

Description: This training will demonstrate how important daily exercise and proper nutrition is for the healthy well-being of young children. Participants will be given a “Healthy Toolbox” that can be utilized in the classroom as well as with parents. This toolbox will promote and encourage daily healthy exercise and a healthy diet for the development of healthy young children.

Date: Thursday, Dec. 8, 2016**Time:** 1 p.m. – 4 p.m.**Location:** OSSE
810 First St. NE, Third Floor Grand Hall Side B**Register by Web:** <http://bit.ly/2dl3feg>**Cost:** FREE**Sponsor(s):** BEE K3-Beyond Expectations in Education and OSSE**Audience:** All teachers, assistant teachers, care givers, directors

Dec.

8

Trauma and Resilience: Building Strength in Children**Units/Clock Hours:** 3 Professional Learning Units

Description: In this workshop, participants will learn how trauma can affect a child’s developing brain. Participants will learn how to identify signs of trauma, including shaken baby syndrome and abusive head trauma, and how to foster resilience in children so that they can develop into emotionally strong adults.

Date: Thursday, Dec. 8, 2016**Time:** 1 – 4 p.m.**Location:** OSSE
810 First St. NE, Third Floor Grand Hall Side A**Register by Web:** <http://bit.ly/2dPnokr>**Cost:** FREE**Sponsor(s):** Early Stages and OSSE**Audience:** All caregivers, teachers, assistant teachers and directors who are in direct contact with children, including substitute caregivers/teachers and volunteers

Dec.

13

Breathing Easy: Asthma Training for Caregivers of Young Children (in Spanish)**Units/Clock Hours:** 2 Professional Learning Units

Description: This training will provide professionals with knowledge of causes surrounding early childhood wheezing and asthma, how to manage children with asthma symptoms, and how to modify the center or school environment to best prevent respiratory problems. Participants will discuss and practice effective techniques for medication administration at centers, and how to address environmental aspects of asthma control with families, especially tobacco smoke.

Date: Tuesday, Dec. 13, 2016**Time:** 10 a.m. – 12 p.m.**Location:** OSSE
810 First St. NE, Third Floor Grand Hall Side A**Register by Web:** <http://bit.ly/2dybKrc>**Cost:** FREE**Sponsor(s):** Children’s National Medical Center and OSSE

Dec.

13

Administration of Medication (AOM) Training**Units/Clock Hours:** 3 Professional Learning Units

Description: During this course, participants will discuss basic medication administration guidelines, how to properly handle and store medications, and proper documentation of the administration of medication.

Date: Tuesday, Dec. 13, 2016

Time: 10 a.m. – 1 p.m.

Location: OSSE
810 First St. NE, Third Floor Grand Hall B

Register by Web: <http://bit.ly/2e6hIS3>

Cost: FREE

Sponsor(s): Children's National Medical Center and OSSE

Audience: All infant, toddler and preschool teachers, assistant teachers and directors

Dec.

13

How to Prevent and Control Infectious Diseases**Units/Clock Hours:** 3 Professional Learning Units

Description: This session will provide an overview on how to prevent and control infectious diseases, including information on immunizations and influenza.

Date: Tuesday, Dec. 13, 2016

Time: 1:30 – 4:30 p.m.

Location: OSSE
810 First St. NE, Third Floor Grand Hall B

Register by Web: <http://bit.ly/2dlawe3>

Cost: FREE

Sponsor(s): Children's National Medical Center and OSSE

Audience: All infant, toddler and preschool teachers, assistant teachers and directors

Dec.

14

DC Common Core Early Learning Standards 101**Units/Clock Hours:** 3 Professional Learning Units

Description: This highly interactive training will provide participants with an understanding of the fundamentals of the District of Columbia Common Core Early Learning Standards (DCCCELS) in order to use the standards to build a foundation for high quality care and education for all children from birth to pre-kindergarten. The training will use group discussions, hands-on activities, and video clips to allow participants to explore the components and structure of the DCCCELS and develop an understanding of developmentally appropriate programming for infants, toddlers and preschool children in the beginning stages of effective implementation.

Date: Wednesday, Dec. 14, 2016

Time: 9:30 a.m. – 12:30 p.m.

Location: OSSE
810 First St. NE, Ninth Floor 9014

Register by Web: <http://bit.ly/2di2GVg>

Cost: FREE

Sponsor(s): OSSE

Audience: All infant, toddler and preschool teachers, assistant teachers and directors

Dec.

14

DC Common Core Early Learning Standards 201**Units/Clock Hours:** 3 Professional Learning Units

Description: This highly interactive training will provide participants with a deeper dive into the District of Columbia Common Core Early Learning Standards (DCCCELS) to build a foundation for high quality care and education for all children from birth to pre-kindergarten. The training will use group discussions, hands-on activities, and video clips to allow participants to explore the four components of quality lesson planning and teaching: Planning, Implementation, Observation, and Assessment.

Date: Wednesday, Dec. 14, 2016

Time: 12:30 – 3:30 p.m.

Location: OSSE
810 First St. NE, Third Floor Grand Hall Side A

Register by Web: <http://bit.ly/2cX75fp>

Cost: FREE

Sponsor(s): OSSE

Audience: All infant, toddler and preschool teachers, assistant teachers and directors

Dec. **15** **Emergency Preparedness**
Units/Clock Hours: 2 Professional Learning Units

Description: Being prepared for emergencies can make a big difference as to whether or not the children in your care and the staff in your program remain safe. In this course, participants will learn about the necessary steps a program should take to ensure preparedness in the event of an emergency, as well as effective strategies to communicate the emergency plan to children, parents, and staff.

Date: Thursday, Dec. 15, 2016

Time: 9 – 11 a.m.

Location: OSSE
810 First St. NE, Eighth Floor 806 A & B

Register by Web: <http://bit.ly/2dODxkC>

Cost: FREE

Sponsor(s): Children's National Medical Center and OSSE

Audience: All caregivers, teachers, assistant teachers and directors

Dec. **15** **Act Early: When Children Fall Behind in their Developmental Milestones**
Units/Clock Hours: 3 Professional Learning Units

Description: Acting early can greatly improve a child's quality of life, prevent abuse, and improve early education outcomes. In this training, participants will learn about District programs, DC Early Intervention Strong Start and Early Stages. Participants will also receive instruction on how to prevent and recognize signs and symptoms of shaken baby syndrome/abusive head trauma.

Date: Thursday, Dec. 15, 2016

Time: 1 – 4 p.m.

Location: OSSE
810 First St. NE, Eighth Floor 806 B

Register by Web: <http://bit.ly/2dOznt5>

Cost: FREE

Sponsor(s): Early Stages and OSSE

Audience: All caregivers, teachers, assistant teachers and directors

Dec. **15** **Be an Oral Health Champion**
Units/Clock Hours: 1 Professional Learning Unit

Description: Pain from dental conditions may interfere with nutrition, sleep, social engagement, and other activities that impact a child's long-term physical and psychosocial development. This session discusses prevention, and common oral health conditions that affect young children and their families. Participants will learn strategies for increasing their engagement with families and children about oral health issues and help them identify clinical resources in the local community.

Date: Thursday, Dec. 15, 2016

Time: 1:30 p.m. – 2:30 p.m.

Location: OSSE
810 First St. NE, Eighth Floor, 806 A

Register by Web: <http://bit.ly/2dygGvy>

Cost: FREE

Sponsor(s): DC Department of Health and OSSE

Audience: Infant, Toddler and Preschool Teachers, Administrators

Dec. **16** **Food Allergy & Emergency Response Training**
Units/Clock Hours: 2 Professional Learning Units

Description: This training will explore the food allergy procedures that should be in place when caring for children in early care and preschool settings according to research-based Centers for Disease Control and Prevention (CDC) guidelines and the rights of children with food allergies. Participants will learn how to create and follow individual care plans for each child with a food allergy, as well as how to create and implement a detailed treatment plan in the event of an allergic reaction.

Date: Friday, Dec. 16, 2016

Time: 1 pm – 3 pm

Location: OSSE
810 First St. NE, Third Floor Grand Hall Side A

Register by Web: <http://bit.ly/2dBM6kx>

Cost: FREE

Sponsor(s): United Planning Organization and OSSE

Audience: All caregivers, teachers, assistant teachers and directors

Dec.
27**How to Provide a Safe Sleep Environment for Infants Workshops for Preventing Sudden Infant Death Syndrome (SIDS) and Sudden Unexpected Infant Death (SUID)****Units/Clock Hours:** 2 Professional Learning Units**Description:** Participants in this course will identify behaviors that increase the risk of SIDS and sleep related infant deaths, learn ways to reduce the risk of SIDS in child care settings, and learn how to communicate with parents and other caregivers about safe sleep practices. This course reflects the American Academy of Pediatrics' revised recommendations for a safe sleep environment.**Date:** Tuesday, Dec. 27, 2016**Time:** 10 a.m. – 12 p.m.**Location:** Department of Health
899 North Capitol St. NE, Third Floor**Register by Web:** <http://bit.ly/2d6xk6t>**Cost:** FREE**Sponsor(s):** DC Department of Health and OSSE**Audience:** All teachers, assistant teachers, care givers, volunteers, substitutes, directors

Online Training Options

The course offerings featured in this section are approved online training programs designed to meet the 11 CCDF Health and Safety Training requirements.

* Please note: Completion certificates are required and web-based courses may cost an additional fee.



On Demand Child Care Training

Featured module:

Health & Safety Basics: Requirements for Certification

Best practices and standards for health and safety are the foundation of quality child care. Meeting the basic health and safety needs of all children sets the stage for positive child outcomes. This health and safety orientation module provides an overview of the basic health and safety requirements and best practices in nine of the topic areas outlined in the Child Care and Development Block Grant (CCDBG) Reauthorization of 2015.



- Safe spaces
- Transportation safety
- Handling and storage of hazardous materials
- Emergency preparedness
- Prevention and control of infectious disease
- Food and allergic reactions and how to respond
- Administration of medication
- Shaken baby syndrome/abusive head trauma
- Safe sleep and SUIDS prevention

Eligible for CEUs
Accepted for CDA

Content for this On Demand professional development module is available at no cost. If a certificate of completion is needed or required, a \$15.00 fee is charged.

extension.psu.edu/youth/betterkidcare • 800-452-9108



Supported by funds from the Office of Child Development and Early Learning, jointly overseen by the Departments of Human Services and Education.

Penn State is an equal opportunity, affirmative action employer, and is committed to providing employment opportunities to all qualified applicants without regard to race, color, religion, age, sex, sexual orientation, gender identity, national origin, disability or protected veteran status.

Claudia C. Mincemoyer, Ph.D., Better Kid Care Program Director
2182 Sandy Drive – Suite 204 State College, PA 16803

This publication is available in alternative media on request.

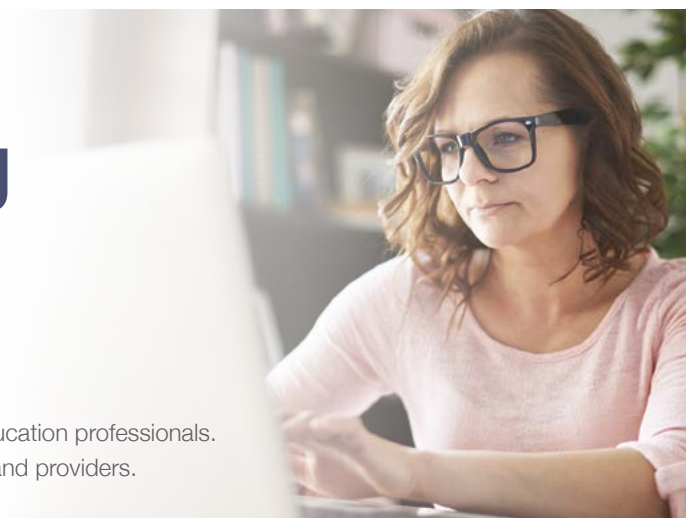
© 2016 The Pennsylvania State University

AD_HealthSafetyBasics_DC

Need to meet the **NEW CCDF Training Requirements?**

You can do this online through Quorum!

Quorum is a unique online professional development program for early education professionals. Quorum annual memberships include UNLIMITED online training for staff and providers.



New Child Care Development Fund (CCDF) regulations* require providers and teachers to complete training in these **11 topic areas:**

Quorum Courses

01. Prevention and control of infectious diseases	Cut the Cooties: Communicable Disease Prevention
02. SIDS and use of safe sleep practices	Safe Sleep & Sweet Dreams for Infants
03. Administration of medication	Cut the Cooties: Communicable Disease Prevention
04. Prevention/response to food allergies 05. Nutrition and physical activity	From Food to Physical Activity
06. Prevention of shaken baby syndrome and abusive head trauma	Understanding Child Abuse & Prevention
07. Building and physical premises safety 08. Emergency preparedness and response planning 09. Storage of hazardous materials and biocontaminants	Keeping Your Child Care Environment Safe & Secure
10. Precautions in transporting children	Traveling with Precious Cargo/Transportation Training for GA
11. First-aid and CPR	Safe Spaces & Places to Grow & Learn

*Section 658E(c)(2)(l)(i), (c)(2)(G) and (c)(2)(l)(i)(i)

What are the benefits of Quorum?



Saves Money

Annual memberships are \$120 per child care provider. Group memberships are available starting at \$50 per staff member per year.



Convenient

Courses are available 24/7, any time, any place. Over 80 hours of training available!



Training Credit

Certificates are awarded upon completion of each course, and a final CCDF certificate will be awarded upon completion of all of the courses above.



High Quality

Course material is high quality, engaging, interactive, relevant, and fun!

For more information and to join Quorum, visit www.kaplanco.com/elearning or call 404-591-2545 for a free webinar!

Available only from:



Early Educator Central:

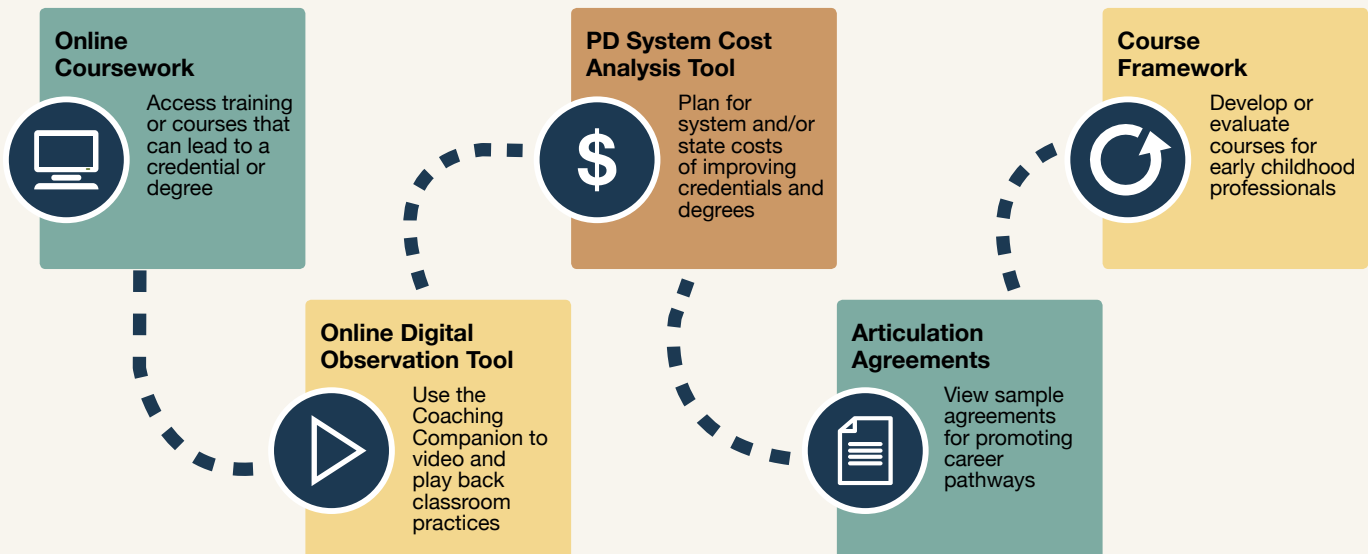
Pathways to Credentials and Degrees for Infant-Toddler Educators

No matter what your infant-toddler career pathway is, you'll find resources—organized by role—to help you build your competency and your impact. On track for a Child Development Associate (CDA) Credential™ for yourself? Looking to strengthen your skills as an administrator, coach, trainer, or consultant? Designing credit or non-credit coursework? Early Educator Central features essential tools for leaders, including a Professional Development (PD) System Cost Analysis Tool and model articulation agreements for use in higher education. Early Educator Central can help!

We have resources to help:



Our resources include:



Start Exploring Now!
Visit <https://earlyeducatorcentral.acf.hhs.gov>





Child and Family Services Agency

Online Mandated Reporter Training

ENGLISH/SPANISH

We all want every child in our city to grow up in safe and healthy families, yet the tragic fact is that thousands of our young people fall victim to abuse and neglect each year.

You can help. Your work gives you regular access to many children and youth, and an opportunity to play a critical role in protecting them. Mandated reporters are professionals obligated by law to report known or suspected incidents of child abuse and neglect. As a mandated reporter, you are part of the citywide safety net that provides life-saving interventions for vulnerable children and youth in our community.

This website provides the information you need to recognize the signs of abuse and neglect, and how to make a report. Thank you for taking time to work through this important training and for your invaluable partnership in looking out for the District's children and youth.

<https://dc.mandatedreporter.org/pages/Welcome.action>



MULTIHAZARD PLANNING FOR CHILDCARE

This online course, developed and provided by FEMA, covers the steps to help childcare providers prepare for incidents to ensure the safety of the children at their site. Childcare providers must have plans and procedures to keep children safe from everyday hazards and to respond and recover when an emergency happens.

The goal of this course is to provide childcare providers, of all sizes and with responsibility for children of all ages, with the knowledge and tools to analyze the hazards and threats at the site, to develop a plan to address these hazards and threats, and to implement processes to update and practice the emergency plan.

The topics addressed in this course include:

- Knowing your hazards.
- Developing a plan.
- Testing and updating your plan

This course culminates in a two-hour training certificate.

Register here: <http://1.usa.gov/1B9oKeJ>



FEMA



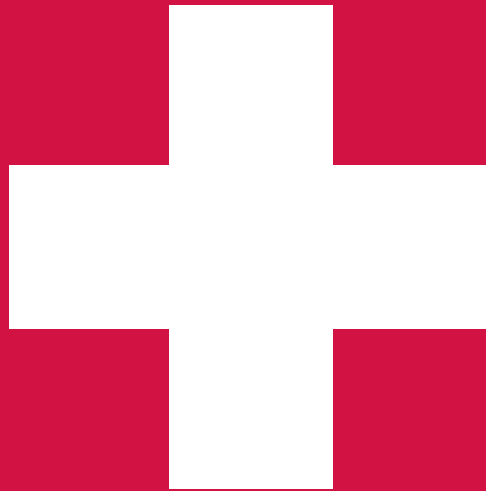
Every day you see them reach milestones.
There are free resources to help you spot a few more.

You spend your day working with, playing with, and watching children, and you are already familiar with many milestones — such as pointing at objects, smiling, and playing with others — that mark a child's development. All children are unique, but sooner or later, you will see a child who is not developing as they should. Free information on developmental milestones from 2 months to five years is available for child care providers and preschool teachers.

For **FREE** materials, visit www.cdc.gov/ActEarly
or call **1-800-CDC-INFO**.



Learn the Signs. Act Early.



CPR RESOURCES

Organization	Registration	Location	Cost
OSSE The Coles Group, LLC Marvin Coles (202) 486-6019 marvin@thecolesgroupdc.com	Listed in OSSE catalog and must register through Eventbrite	Will Vary	FREE Limited Space
Loving Your Heart, LLC Joan Irabor	(202) 340-0980 Joan20131@gmail.com	5212 Drake Place SE Washington, DC 20019	Call for Pricing
Javonne Haynes	(202) 256-9214 Javonne332000@yahoo.com	Will Vary	Call for Pricing
Patricia Burton- McFadden	(240) 714-0014 (202) 604-6508 divaenterprize@gmail.com	Will Vary	Call for Pricing
Marcus Pratt	(202) 701-5705 Mp.cpr1st.aed@gmail.com	Mobile Service	Call for Pricing
Donna Thomas Walter Royster	(202) 689-0429 or 0443 pulseone@yahoo.com	Will vary	Call for Pricing
Bernida Thompson	(202) 882-8073 (202) 270-3266 bthompson@rootspcs.org	Will Vary	Call for Pricing
Know CPR Don Sussman	(703) 528-7045 info@knowcpr.com	Will Vary	Call for Pricing
Turning Corners, LLC Khadijah Alima Long	(240) 615-0407 turningcornersllc@yahoo.com	Will Vary	Call for Pricing

ON-LINE TRAININGS

MULTIPLE OFFERINGS

Units/Clock Hours: Various

Core Knowledge Area: Various

Alignment: DC Common Core Early Learning Standards

Description: ChildCare Education Institute (CCEI) specializes in providing online training and certificates, child care registry development, and administrative solutions for the early care and education industry. As a leading distance training provider in child care, CCEI offers professionals 100+ online child care training courses in English and Spanish to meet licensing, recognition program, and Head Start requirements.

Time: Open Enrollment/ Self-paced

Register by web: cceaonline.com

Cost: varies

Sponsor(s): Child Care Education Institute

Audience: Teachers, Administrators, Before/After Care, Out-of-School Time

DC MANDATED REPORTER TRAINING

Units/Clock Hours: 2 Professional Learning Units

Core Knowledge Area: Professionalism and Advocacy

Alignment: Licensing

Description: This engaging training contains definitions, examples, and signs of child abuse and neglect, numerous links to resources and DC legal codes, helpful tips for mandated reporters, and interactive learning checks to confirm you learned Important concepts.

Date: Online Virtual Training

Time: Open Enrollment/ Self-paced

Register by web: dc.mandatedreporter.org/pages/Welcome.action

Cost: FREE

Sponsor(s): Child and Family Services Administration

Audience: Teachers, Administrators, Before/After Care, Out-of-School Time

MULTIPLE OFFERINGS

Units/Clock Hours: Various

Core Knowledge Area: Various

Alignment: DC Common Core Early Learning Standards

Description: Early Care Institute specializes in providing online training and certificates, child care registry development, and administrative solutions for the early care and education industry. As a leading distance training provider in child care, Early Care Institute offers courses to meet licensing, recognition program, and Head Start requirements.

Time: Open Enrollment/ Self-paced

Register by web: earlycareinstitute.com

Cost: varies

Sponsor(s): Childcare Management Solutions

Audience: Teachers, Administrators, Before/After Care, Out-of-School Time

MULTIPLE OFFERINGS

Units/Clock Hours: Various

Core Knowledge Area: Various

Alignment: DC Common Core Early Learning Standards

Description: CYPHERWORX specializes in all online courses that are self-paced and interactive. Incorporating games and rich visuals so that our Out-of-School Time learners retain the information long after they have completed the course. Each of our courses comes with a Resource PDF that contains 3 download Learning Tasks Checklist, Course Information and Materials, and an Activity PDF. The full catalog includes hundreds of courses relevant to school-age childcare including a 36 course series with in-depth curriculum content, interactivity, and certificates.

Time: Open Enrollment/ Self-paced

Register by web: ostpd.com

Cost: varies

Sponsor(s): CYPHERWORX

Audience: Out-of School Time

WANT TO LEARN MORE?

Additional Professional Development Resources

Advocates for Justice: www.aje-dc.org

American Academy of Pediatrics (SIDS): wyostars.com/pdfs/aap_sids.pdf

Center for Disease Control and Prevention: www.cdc.gov

Council for Professional Recognition: www.cdacouncil.org/

Council for Exceptional Children: www.cec.sped.org/

DC Early Intervention: www.osse.dc.gov/service/strong-start-dc-early-intervention-program-dc-eip

Early Childhood Investigations Webinars: www.earlychildhoodwebinars.com

Early Childhood Training and Technical Assistance System: www.childcareta.acf.hhs.gov/ccdf-reauthorization

Early Educator Central: www.earlyeducatorcentral.acf.hhs.gov

Early Stages: www.earlystagesdc.org

Georgetown University Center for Continuing and Professional Education/Early Intervention:

http://scs.georgetown.edu/programs_nc/CE0110/early-intervention?dID=5

Head Start Information Services: www.eclkc.ohs.acf.hhs.gov/hslc

Learn DC: www.learn-dc.org

National Association for the Education of Young Children: www.naeyc.org/

National Black Child Development Institute: www.nbcdi.org/

Save the Children: www.savethechildren.org

Sesame Street: www.sesamestreet.org/freeonlinecourse

OSSE-Certified Trainer Resource Guide

**The trainers listed beyond this point are
Fee-for-service professional development providers.**

FREQUENTLY ASKED QUESTIONS:

1. Why are Approved Trainers Important?

Research shows that early childhood professionals with specialized training AND higher education/professional credentials are more likely to create quality experiences for young children and their families. All staff in early childhood programs must provide evidence that they are receiving specialized training via continuing education and professional development activities. Continuing education requirements may vary depending on the type of program (subsidized child care, Head Start, publicly funded pre-K, etc).

The Office of the State Superintendent of Education (OSSE) approves competent individuals and organizations to train early childhood professionals. Trainers are selected based on their education and experience in the field. Only trainings delivered by OSSE approved trainers, accredited colleges/universities or other OSSE approved sources are acceptable.

2. What Counts as Continuing Education?

Professional Development Training/Clock Hours: At minimum, training participants should receive Professional Development Training Hours for the total length of the training. This is commonly referred to as “clock hours.”

Continuing Education Units (CEUs): A CEU is participation in a recognized continuing education program. Some colleges, universities, and OSSE certified training organizations can award CEUs.

1 CEU = 10 Professional Development Training/Clock Hours.
See question 3 for additional guidelines.

Academic Credit Hours: Colleges and universities award academic credit hours after a course of studies has been successfully completed. 1 academic credit = 15 Professional Development Training/Clock Hours. Most college courses are 3 academic credit hours. See question 3 for additional guidelines.

3. Are there additional guidelines or recommendations?

If seeking CEUs, OSSE certified training organizations authorized by the **International Association for Continuing Education & Training (IACET)** or colleges/universities accredited by regional accrediting bodies, National Association for the Education of Young Children (NAEYC) or National Council for Accreditation of Teacher Education (NCATE) are highly recommended.

If seeking Academic Credit Hours, colleges/universities accredited by regional accrediting bodies, National Association for the Education of Young Children (NAEYC) or National Council for Accreditation of Teacher Education (NCATE) is highly recommended.

4. How do I Select an Approved Trainer?

a) Determine Your Training Needs - Core Knowledge Areas and Content Level

Core knowledge Area:

The Core Knowledge Areas detail the specific knowledge and skills needed by early childhood professionals to work effectively with all young children and families. Use classroom assessments, staff evaluations, and other data about your program to determine the core knowledge area that you or your staff needs more support with.

Training Content Level:

What level of training are you seeking?

- Basic Content Level: The audience is somewhat new to the concept and needs to learn or relearn the basics.
- Intermediate Content Level: The audience understands the basics, but needs to apply what is learned.
- Advanced Content Level: The audience understands the basics, has already applied the concepts, but needs to understand how to evaluate and synthesize the effectiveness of implementation.

b) Identify and Contact the Trainer(s)

Make sure that the trainer you selected is certified to train in the core knowledge area and at the level you are seeking. The trainer must have a current (not expired) certification. This list will be revised periodically. Please contact us to confirm that you have the most recent listing. The trainer’s name and certification number must be listed on the training certificate. **OSSE is not responsible for arrangements made with outside trainers and cannot guarantee the quality of services provided by these trainers. **

c) Apply Concepts Learned

Continuing education is more than “getting clock hours.” The topics and content level should be intentionally selected. The concepts learned should be used to provide quality experiences for young children and their families.

d) Reflect on & Evaluate the Impact

Did the training have an impact? What were the challenges of implementation? Identify the next steps. Quality is a continuous improvement and reflection process.

5. What is the Function of the Office of the State Superintendent of Education?

The Office of the State Superintendent of Education (OSSE) provides leadership and coordination to ensure all District of Columbia children from birth to kindergarten entrance have access to high-quality early childhood development programs.

OSSE works to develop an effective early childhood education system by:

- implementing high standards for programs and professionals
- creating supports to meet standards
- adhering to rigorous accountability measures
- engaging community stakeholders
- securing strong financial supports

UNDERSTANDING CORE KNOWLEDGE AREAS:

CURRENT LANGUAGE	PREVIOUS LANGUAGE
<p>1. Child Growth and Development</p> <ul style="list-style-type: none"> - Principles of child growth and development - Domains and stages of development (motor, language, cognitive, social-emotional) - Links between various aspects of development and learning 	1. Human Development
<p>2. Observing, Documenting and Assessing to Support Young Children and Families</p> <ul style="list-style-type: none"> - Observation and assessment of children's behavior - Screening instruments for all domains (motor, language, cognitive, social-emotional) - Using observations and assessments in a effective way to support children and families - Recognize the types and signs of child mental health issues 	2. Observing, Recording and Assessing Children's Behavior
<p>3. Health, Safety, and Nutrition</p> <ul style="list-style-type: none"> - Physical Development, Health and Safety - Nutrition - Types and signs of abuse, neglect, and violence; responsibilities and procedures for reporting abuse and neglect - Developmental consequences of abuse, neglect, stress and trauma 	3. Health, Safety and Nutrition
<p>4. Curriculum</p> <ul style="list-style-type: none"> - Planning and implementing a developmentally appropriate curriculum that advances all areas of children's learning and development - Approaches to Learning, Language and Literacy, Mathematical Thinking, Scientific Inquiry, Creative Arts - Considering culturally-valued content and home experiences - Strategies that offer choices and foster curiosity, problem solving and decision-making - Planning and implementing a curriculum that is aligned with DC's Early Learning Standards 	4. Developmentally Appropriate Curriculum
<p>5. Inclusive Practices</p> <ul style="list-style-type: none"> - Characteristics of children with varied disabilities - Adaptations of curricula to include children with disabilities in all classroom activities - Interventions to enhance the growth and development of children with disabilities and development of Individualized Family Service Plan (IFSP) or Individualized Education Plan (IEP) 	5. Inclusive Practices for Children with Disabilities
--note: Guidance and Management now merged with 11--	6. Guidance and Management
<p>6. Learning Environments</p> <ul style="list-style-type: none"> - Creates learning environments that are responsive to the diverse needs of the abilities and interests of young children - Strategies to implement learning environments that support developmentally appropriate practices (infants, preschoolers, school age) - Adaptations to fully include children with special needs 	7. Learning Environments
<p>7. Building Family and Community Relationship</p> <ul style="list-style-type: none"> - Principles and strategies that view families as functional and resilient with diverse values, cultures, unique temperaments and learning styles - Establishing relationships and communication with families and other community systems that are productive, supportive and pro-active - Issues, challenges, and services regarding mental health 	8. Supportive Relationships with Children Families and other Community Systems

CURRENT LANGUAGE	PREVIOUS LANGUAGE
<p>8. Diversity: Family, Language, Culture, and Society</p> <ul style="list-style-type: none"> - Culture, language and ethnicity as a positive influence on a child’s development - Helping young children understand and appreciate different cultural traditions 	<p>9. Diversity, Family, Language, Culture, Society</p>
<p>9. Program Management: Operation and Evaluation</p> <ul style="list-style-type: none"> - Approaches and techniques to plan, organize, and use available resources - Effective strategies for working productively with staff and community resource individuals and agencies - Techniques to conduct program evaluation and to implement program improvements - Interpersonal development and communication including team building, collaboration, and conflict management principles and skills. - Fiscal planning and management 	<p>10. Program Operation and Evaluation</p>
<p>10. Professionalism and Advocacy</p> <ul style="list-style-type: none"> - Scope of the early childhood profession - Impact of federal, state, and local standards, policies, regulations, and laws which govern and impact on children, programs and early childhood professionals - Approaches to evaluate one’s professional skills and need for professional development - Responsibility to work with other early care and education professionals, parents and the community to discuss and improve policies, laws, standards, practices that impact children, programs and the profession 	<p>11. Professionalism and Advocacy</p>
<p>11. Social-Emotional Development and Mental Health</p> <ul style="list-style-type: none"> - Social and emotional development - Communication techniques for guiding young children toward self- direction and confidence - Guidance and management strategies that support developmentally appropriate practices - Approaches to provide supportive relationships with children and to foster positive peer-to-peer interactions - Approaches to meet the mental health needs of all children 	<p>12. Social/Emotional Development and Mental Health</p>

UNDERSTANDING THE TRAINING CONTENT LEVELS:

Content Level	What Audience is this Level of Training for?	Alignment with Bloom's Taxonomy
Basic	The audience is somewhat new to the concept and needs to learn or relearn the basics.	Knowledge Comprehension
Intermediate	The audience understands the basics but need to apply what is learned.	Application Analysis
Advanced	The audience understands the basics, has already applied the concepts, and need to understand how to evaluate and synthesize the effectiveness of implementation.	Synthesis Evaluation

• Identify and Contact the Trainer

Make sure that the trainer you selected is certified to train in the core knowledge area and at the level you are seeking. The trainer must have a current (not expired) certification. This list will be revised periodically. Please contact us to confirm that you have the most recent listing. The trainer's name and certification number must be listed on the training certificate. ** OSSE is not responsible for arrangements made with outside trainers and cannot guarantee the quality of services provided by these trainers**

• Apply Concepts Learned

Continuing education is more than 'getting clock hours.' The topics and content level should be intentionally selected. The concepts learned should be used to provide quality experiences for young children and their families.

• Reflect on & Evaluate the Impact

Did the training have an impact? What were the challenges of implementation? Identify the next steps. Quality is a continuous improvement and reflection process.

CERTIFIED TRAINING- ORGANIZATIONS:

Organization, Primary Contact and Contact Information	Training Content Level	Core Knowledge Area	Trainings Offered in Other Language
Action for Healthy Kids Kristina Shelton (303) 883-2482 (410) 707-9038 kshelton@actionforhealthykids.org	Basic	3	No
Advocates for Justice and Education, Inc. Jazmone Taylor jazmone.taylor@aje-dc.org (202) 678-8060	Basic	1,2,3,5,10,11	Yes Spanish & Amharic
Apple Tree Institute for Education Innovation Kelly Trygstad (202) 488-3990 ktrystad@appletreeinstitute.org	Advanced	ALL	Yes Spanish, German, Farsi, Pashto, Portuguese, French & Tagalog
Bright Horizons Children's Centers, LLC Deborah Koshansky (857) 334-1037 deborah.koshansky@brighthorizons.com	Basic	1,4,6,7,8,9,10,11	No
Bright Beginnings, Inc. Yasmin Shaffi (202) 842-9090 yshaffi@brightbeginningsinc.org	Basic	4	No
Bureau of Nutrition & Physical Fitness, DC DOH Michele Tingling-Clemmons (202) 442-9140 Michele.Tingling-Clemmons@dc.gov	Basic	3	Yes Spanish
Center for Child Protection and Family Support Joyce Thomas (202) 544-3144 ext. 11 joyce@centerchildprotection.org	Advanced	1,3,4	No
CentroNia Esteban Morales (202) 332-4200 emorales@centronia.org	Advanced	ALL	Yes Spanish
ChildCare Education Institute Kimberle Collins (1-800) 499-9907 ext.533 kcollins@cceionline.edu	Intermediate	ALL	Yes Spanish
Child Care Management Solutions Amina Jones Law (301) 203-7648 cms4women@aol.com cms4women@yahoo.com	Advanced	ALL	No
Child Development Consultants, LLC Judith Greenberg (301) 442-3857 jgreenberg@childdc.com	Intermediate	1,5,6,11	Yes Spanish & French

Organization, Primary Contact and Contact Information	Training Content Level	Core Knowledge Area	Trainings Offered in Other Language
Children's National Medical Center Molly Savitz and Candice Pantor (202) 476-2239 MSavitz@childrensnational.org	Advanced	2,3,5,7	No
City Wide Community Child Development Center Shirley Johnson (301) 580-1072 (240) 832-2682 openheart11@verizon.net	Intermediate	1,3,4,5,6,7,8,11	No
Consortium for Child Welfare Anniglo Boone (202) 547-1589 aboone@consortiumforchildwelfare.org	Advanced	3 Specialized Area Social Work	Yes Spanish
CYPHERWORX Catherine Anderson (585) 626-8685 canderson@cypherworx.com	Basic	ALL	No
Departmental of Behavioral Health vs. Mental Health Barbara Parks Note: Not open to public (202) 698-1871 Barbara.Parks@dc.gov	Intermediate	1,2,3,4,7,8,11	No
Department of Health Sharon Brandon (202) 442-5925 Sharon.Brandon@dc.gov	Advanced	ALL	Spanish
DC Fire & EMS Department Aleazor Taylor (202) 727-2215 Aleazor.Taylor@dc.gov	Intermediate	2,3,11	No
DC Public Library Patty Reeber (202) 727-2313 Patty.Reeber@dc.gov	Basic	4	No
Debra L. Byrd & Associates Debra Byrd (703) 965-7637 VAbyrds@aol.com	Intermediate	1,2,3,9,11	No
Early Learning Strategies and Solutions (ELSS) LLC Joi Woods 240-270-2199 workshops@elssconsulting.com	Intermediate	3,9,10	No

Organization, Primary Contact and Contact Information	Training Content Level	Core Knowledge Area	Trainings Offered in Other Language
<p>Early Stages</p> <p>Jeanie Chang (202) 698-8037 Jeanie.chang@dc.gov</p>	Intermediate	1,2,3,4,5,6,7,8,10,11	Yes Spanish & Amharic
<p>Education Matters, LLC</p> <p>Toni Brown (301) 613-3985 tbrown@educationmattersllc.com</p>	Intermediate	4	No
<p>Eisenhart & Associates, Educational Consulting</p> <p>Corrine Eisenhart (717) 249-7733 (717) 991-9201 EisenhartConsulting@gmail.com</p>	Advanced	1,2,4,5,6,7,10	No
<p>FAA/DOT Child Development Center</p> <p>Sharleen Smith (202) 267-7672 Sharleen.E-CTR.Smith@faa.gov</p>	Intermediate	ALL	No
<p>ICF Early Education Institute</p> <p>Barbara McCreedy (703) 225-2181 barbara.mccreedy@icfi.com</p>	Advanced	ALL	Yes Spanish
<p>Imagination Stage</p> <p>Joanne Seelig (301) 280-1646 jseelig@imaginationstage.org</p>	Intermediate	1,4,5,11	No
<p>Inner City-Inner Child</p> <p>Ingrid Zimmer (202) 965-2000 ext. 101 Ingrid@innercity-innerchild.org</p>	Intermediate	4,7,10,11	American Sign Language
<p>Innis Enterprise, Inc.</p> <p>Michelle Marbury (301) 933-0779 (240) 882-5550 m.innis@verizon.net</p>	Advanced	ALL	Yes Spanish
<p>Instituto de Educac'ion Infantil, Inc.</p> <p>Miriam Baldwin (301) 982-1596 mbaldwin20@hotmail.com</p>	Intermediate	1,3,4,6,7,8,9,10,11	Yes Spanish
<p>Jewish Social Service Agency</p> <p>Orly Zimmerman-Leizerov (301) 610-8339 oleizerov@jssa.org</p>	Intermediate	7,11	Yes Spanish, Chinese, Hebrew & French
<p>Kaplan Early Learning Company</p> <p>Julie Dobies (410) 303-8802 jdobies@kaplanco.com</p>	Intermediate	ALL	No

Organization, Primary Contact and Contact Information	Training Content Level	Core Knowledge Area	Trainings Offered in Other Language
Kids Are Us Learning Centers, Inc Lynita Law-Reid (202) 561-0290 lynitakaulc@aol.com	Intermediate	1	No
Kids Comprehensive Services, LLC Brenda Harris (202) 678-0027 brendaharrisw@aol.com	Advanced	1,2,3,4,5,7,8,11	Yes Spanish
KJ Consulting Group Kamila Johnson (240) 595-2790 kamila@kj-consulting.org	Basic	1,2,4,5,6,7,8,9,10,11	Yes Spanish
Know CPR Don Sussman (703) 528-7045 info@knowcpr.com	Advanced	3 Specialized Field CPR and 1st AID	No
Kuumba Learning Center, Inc. Maja Rasheed (202) 563-5971 kuumbateachers@gmail.com	Intermediate	2	No
Loving Your Heart, LLC Joan Irabor (202) 340-0980 joan20131@gmail.com	Intermediate	3 Specialized Area CPR & 1 st AID	No
Mary's Center for Maternal and Child Health Yael Kiken (202) 420-7143 YKiKen@maryscenter.org	Advanced	ALL	Yes Spanish
McFarren Aviles and Associates Jill McFarren Aviles 703-505-0127 jill@mcfarrenaviles.com	Advanced	2,4,6	Yes Spanish
MD Homeschool Solutions, Limited Aretha Williams (301) 646-7342 wwaretha@msn.org	Advanced	2,3,4,5,6,7,8,9,10,11	No
National Association for the Education of Young Children (NAEYC) (1-800) 424-2460 www.naeyc.org	Advanced	ALL	No

Organization, Primary Contact and Contact Information	Training Content Level	Core Knowledge Area	Trainings Offered in Other Language
National Black Child Development Institute Dana Caffee-Glenn (202) 552-6090 dcaffee-glenn@nbcddi.org (202) 833-2220 www.nbcddi.org	Advanced	ALL	No
National Child Research Center Mary C. Farmer (202) 363-8777 ext. 235 mfarmer@ncrcpreschool.org	Intermediate	1,4,5,7,9	Yes Spanish
National Educational Consulting Services Lora Fader Dunne (301) 564-6650 necstrainings@yahoo.com	Advanced	1,2,4,5,6,7,11	Yes Spanish
Office of the State Superintendent of Education (OSSE) Professional Development Unit Nigel Henley (202) 727-8119 Nigel.Henley@dc.gov	Advanced	ALL	Yes Spanish & Amharic
Office of the State Superintendent of Education (OSSE) Nutrition Katrina Florek (202) 442-4011	Advanced	3	No
Over Achieve Consulting Heidi P. O’Gilvie (202) 409-6601 hogilvie@overachieveconsulting.com	Basic	4	Yes Spanish
Roots Activity Learning Center, Inc. Bernida Thompson (202) 270-3266 (202) 882-8073 bthompson@rootspcs.org iflemming@rootsactivity.org	Advanced	3 Specialized Area CPR & 1st Aid 4	No
Safe Shores-DC Children’s Advocacy Erin McGuinness (202) 645-3522 emcguinness@safeshores.org www.safeshores.org	Basic	3	Yes Spanish
School Readiness Consulting Lindsey T. Allard Agnamba (877) 447-0327 allard@schoolreadinessconsulting.com www.schoolreadinessconsulting.com	Advanced	ALL	Yes Spanish

Organization, Primary Contact and Contact Information	Training Content Level	Core Knowledge Area	Trainings Offered in Other Language
Smithsonian Early Enrichment Center Betsy Bowers (202) 633-9587 bowersb@si.edu	Intermediate	6	No
Smithsonian National Air and Space Museum Ann Caspari (202) 633-2557 caspariak@si.edu	Intermediate	4,6	No
Southeast Children's Fund –Professional Development Institute Frances J. Rollins (202) 561-5736 sechild@verizon.net rollins.frances@gmail.com	Advanced	ALL	Yes Spanish & Tagalog
St. Columba's Nursery School Julia H. Berry (202) 742-1980 jberry@columba.org school@columba.org	Advanced	1,2,4,5,6,7,9,11	No
Support By Design Badiyah Mushirah-Sharif (571) 480-9967 support-by-design2013@outlook.com	Advanced	ALL	No
Teaching Strategies teachingstrategies.com	Advanced	4	Yes Spanish
The Coles Group, LLC Marvin Coles (202) 486-6019 marvin@thecolesgroupdc.com	Advanced	3 Specialized Area CPR & 1 st AID	Yes Urdu, Spanish, Punjabi, Hindi, Vietnamese, Korean, Chinese & Amharic
The Ounce of Prevention Fund Renee Welch (312) 922-3863 (708) 805-0195 rwelch@ounceofprevention.org	Intermediate	2,9,10	No
Turning Corners LLC Khadijah Alima Long (240) 615-0407 turningcornersllc@yahoo.com	Advanced	3 Specialized Area CPR and 1st AID	No
United Planning Organization (UPO) Syrta L. Robinson (202) 238 4636 (240) 304 6227 srobinson@upo.org	Advanced	ALL	Yes Spanish

Organization, Primary Contact and Contact Information	Training Content Level	Core Knowledge Area	Trainings Offered in Other Language
United States General Services Administration Sandy Axelrod (202) 205-7406 sandra.axelrod@gsa.gov	Advanced	ALL	No
United States Botanic Garden Lee Coykendall (202) 226-1117 (202) 578 8119 Lcoykend@aoc.gov	Advanced	3,4,6,7,8	No
WETA Susan Schatten (703) 998-2829 sschatten@weta.org	Basic	1,6,11	No
Wolf Trap Foundation for Performing Arts Lori Phillips (703) 255-1933 lorip@wolftrap.org	Basic	4, 8	No
Zero To Three Frances Moore (202) 857-2998 fmoore@zerotothree.org	Intermediate	2	Yes Spanish

End of Certified Training Organization

CERTIFIED TRAINING- INDIVIDUALS

Individual and Primary Contact Information	Training Content Level	Core Knowledge Area	Trainings Offered in Other Language
Shiffaun L. Alston (202) 340-5224 alstonsh82@gmail.com	Basic	1,9,10	No
Berna Artis (202) 257-9528 Berna.artis@comcast.net	Intermediate	1,2,3,4,6,8,10,11	Yes Turkish
Ernesta Battle (301) 455-8233 dr.ernestabattle@gmail.com	Advanced	2,4,6,8,9,10,11	No
Linda Bean (202) 529-5437 X105 lbean@happyfaces247.com	Intermediate	1,6,8,9,10	No
Christophe Beard (202) 727-0969 Christophe.Beard@dc.gov		1,7,8	No
Michelle L. Brown (202) 427-4768 emmitt69@msn.com	Basic	ALL	No
Shirley E. Cooley (202) 561-5286 (202) 423-6163 secskinner@yahoo.com	Intermediate	1,3,10	No
Lisa Blackwell Danahy (301) 814-7115 lisanadahy@gmail.com lisa@dynamiclifeyoga.com	Basic	1,4,8,11 Specialized Area Yoga	No
Robert E. Gundling (703) 960-5853 secfund@aol.com rgundling@aol.com	Advanced	1,9	No
Heidi Ham (267) 337-0220 Heidi@naaweb.org	Basic	4	No
Javonne Haynes (202) 256-9214 javonne332000@yahoo.com	Basic	3 Specialized Area CPR & 1st Aid	No
Nigel Henley (202) 727-8119 Nigel.Henley@dc.gov	Advanced	1,9,11	Yes Spanish
Wanda Holmes (202) 441-0173 waholmes@starpower.net	Advanced	1,4,7,8,9	No
Jacqueline Howell (301) 873-7680 azspire@gmail.com	Advanced	4,6,7,10,11	Yes French Sign Language
Angela Chester Johnson 202-409-7465 aglo1001@gmail.com	Advanced	1,3,4	Yes French

Individual and Primary Contact Information	Training Content Level	Core Knowledge Area	Trainings Offered in Other Language
Kamila Johnson (240) 595-2790 johnsonkamila@yahoo.com kamila@kj-consulting.org	Advanced	2,4	Yes Spanish
Shaunte Jones (202) 727-2992 Shaunte.Jones@dc.gov	Advanced	1,2,6,9	No
Majorie A. Kinard 301-890-6805 makinard@hotmail.com	Basic	1, 9, 11	No
Kathy Manning (301) 423-7305 Hblues2@aol.com	Intermediate	1	No
Patricia L. Burton-McFadden (202) 604-6508 (240) 714-0014 diva_enterprize@yahoo.com divaenterprize@gmail.com	Basic	3 Specialized Area CPR & 1St Aid 1,4,5,6,9,10,11	No
Tanetta Merritt (202) 562-7908 (202) 607-1665 scfund1@verizon.net	Basic	1	No
Sarah Meytin (240) 413-6056 sarahmmsam@yahoo.com sarah.meytin@bnaishalomofolney.org	Basic	7,8,10	No
Melanie Newkirk 240-838-3776 mel.newkirk@gmail.com	Basic	7	No
Rosalind Oden (202) 441-1381 202-476-3113 rpoden@childrensnational.org	Advanced	2,3,5,7	No
Marcus Pratt (202) 701-5705 mp.cpr1st.aed@gmail.com	Advanced	3 Specialized Area CPR,1st Aid, AED	No
Brandee C. Reed (202) 630-0228 brandee_reed@yahoo.com	Intermediate	9	No
Sunithi Selvaraj (240) 994-4827 sueselvaraj@gmail.com	Intermediate	3 Specialized Area Food Safety Manager Certification	Yes Hindi, Kanada & Tamil
Jacqueline Simmons (240) 472-9296 jsimmons0905@gmail.com	Basic	1,4	No
Rosalie Slaughter (202) 257-7184 rs818@hotmail.com	Basic	3,6,8	No

Individual and Primary Contact Information	Training Content Level	Core Knowledge Area	Trainings Offered in Other Language
Angelique Speight (202) 270-3098 angeliquespeight@yahoo.com	Basic	1	No
Stormy Stringer (202) 421-6701 (202) 689-0443 4alledu@gmail.com	Advanced	3,9	No
Donna Thomas Walter Royster (202) 689-0443 pulseone@yahoo.com	Basic	3 Specialized Area CPR & 1st AID	No
LaShawn Tracy (202) 439-0324 shawnjtra@yahoo.com tracyconsulting37@gmail.com	Intermediate	3 Specialized Area CPR & 1st AID	No
Constance Watkins (301) 421-1899 (301) 922-7716 clwatkins50@verizon.net	Intermediate	1,6,11	No
Darryl Webster (202) 207-4964 drrylwbster@aol.com	Advanced	11	No
Julie Wennekes (202) 741-6498 Julie.Wennekes@dc.gov	Advanced	1,5,10	No
Cheryl J. West (301) 925-7427 (301) 466-5086 dr.cwest.wdi@gmail.com	Advanced	8,9,10	No

End of Certified Training [Individual](#)

TRAINING PLANNING GUIDE:

Based on data, training is needed in

_____ (core knowledge area) at the
_____ level (content level)

_____ (core knowledge area) at the
_____ level (content level)

_____ (core knowledge area) at the
_____ level (content level)

I have a copy of the most current listing of certified trainers.

The trainer is certified to train in the area and at the level I am seeking.

The trainer has a current (not expired) certification.
The trainer's name and certification number will be on the certificate issued.

Training participants know that the concepts learned must be applied. Support and monitoring will be provided as needed.

After the training & application, training participants will reflect and evaluate the impact.