

Community Schools

Financing and Sustainability

Martin J. Blank, Director
Coalition for Community Schools
April 19, 2017

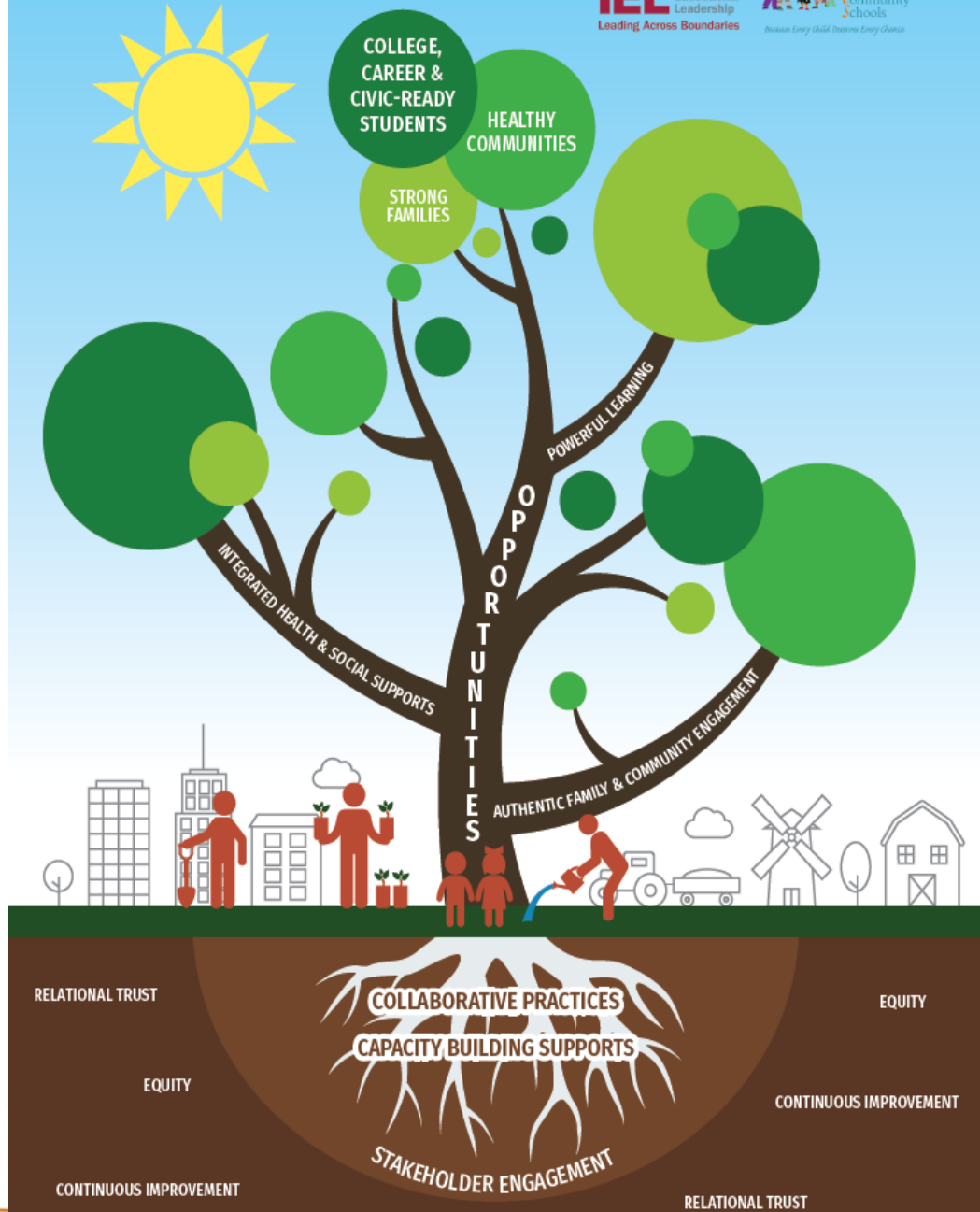
Coalition Vision and Mission

- **Shared Vision**: Schools are centers of flourishing communities where everyone belongs, works together, and thrives.
- **Mission**: To unite school, community and family for young people's success.

What is a Community School?

A Community School is a **public school** – the **hub** of its neighborhood, uniting **families, educators and community partners** to provide all students with **top-quality academics, enrichment, health and social services, and opportunities** to succeed in school and in life.

COMMUNITY SCHOOLS FRAMEWORK



Framework Components

Collaborative Practices

1. Shared ownership for results
2. Strategic community partnerships
3. Resource coordination
4. Data-driven planning
5. Inclusive leadership

Framework Components

Capacity-Building Supports

1. All-stakeholder leadership development
2. Professional Development
3. Coaching for continuous improvement

The Role of City Leaders

Stakeholder Engagement and Participation

ENGAGING ALL LEADERS

Educating all students is a responsibility shared by school systems, families, communities, businesses, and governments. When community stakeholders work in purposeful partnerships, all of the conditions for improved student learning can be met. Research shows that creating these conditions will improve student achievement, and integrating community and school assets and services can lead to stronger families and safer, more vibrant communities where students can thrive. Leaders from across a community can contribute by learning about each other's institutional cultures; sharing people, resources, and services that can support student success; and by

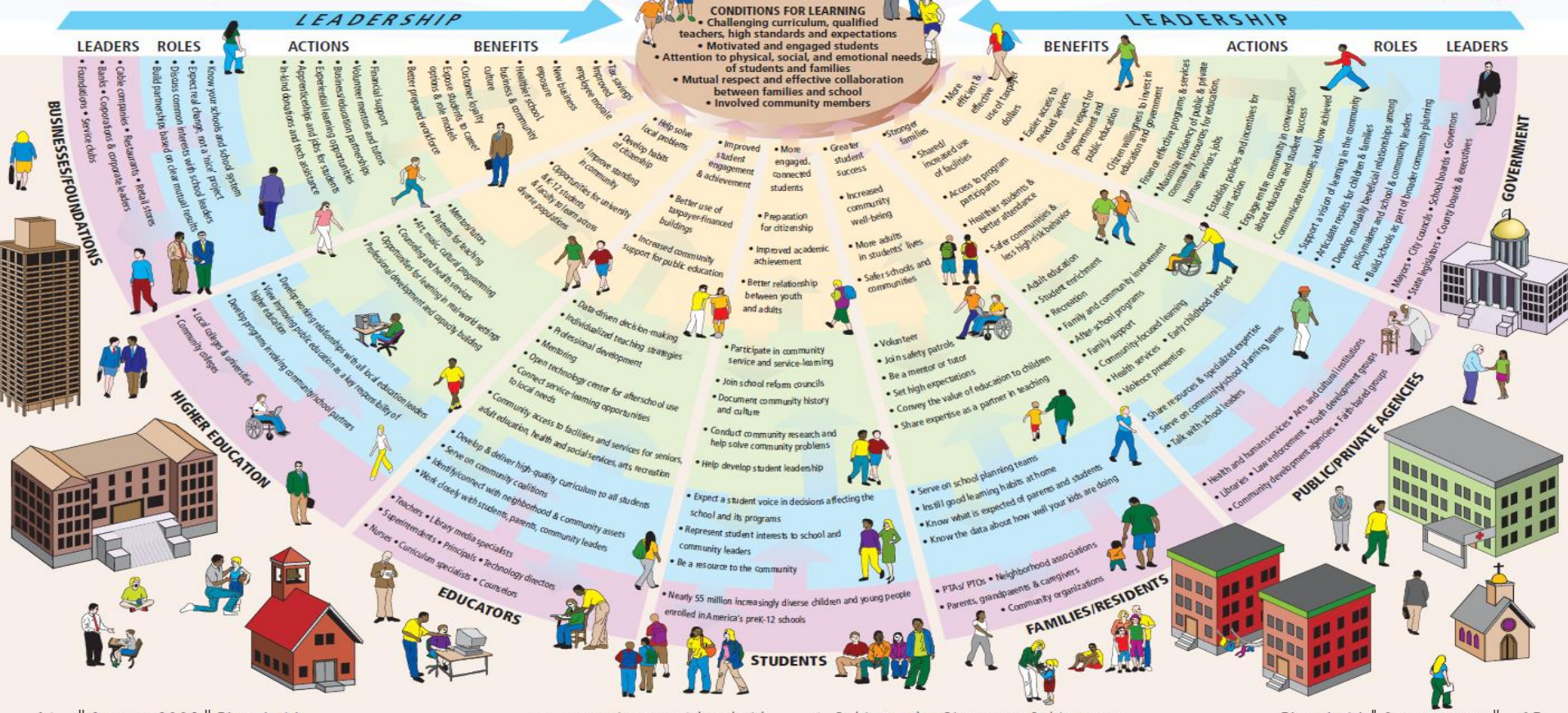
MARTIN BLANK •••
Staff director, Coalition for Community Schools, Institute for Educational Leadership

BETTY HALE, ED.M., M.P.A. •••
President, Institute for Educational Leadership

IRA HARKAVY, PH.D. •••
Associate v.p. & director, Center for Community Partnerships, University of Pennsylvania

staying the course to sustain programs and relationships. In addition, each type of leader can contribute—and benefit—in ways that enhance the common good and in the interests of their own institutions.

For more information, see "Making the Difference: Research and Practice in Community Schools," a report from the Institute for Educational Leadership's Coalition for Community Schools. www.communityschools.org



Financing What?

Support for Community Schools

- Sustainable community schools draw from a diverse blend of funding streams aligned toward the strategy.
- They align city, state, and federal public funds as well as private/philanthropic funds.
- Resource: Coalition [Financing Guide](#)

Keys to Sustainability

- Leadership
- Advocacy
- Results
- Relationships
- Stories

Thank you!

Martin Blank

blankm@iel.org

202-822-8405 x 167