

# Research to Practice: Implementing & Innovating Preschool Research to Close the Academic and Social Emotional Achievement Gaps before Kindergarten



June 11, 2014  
Lydia J. Carlis, PhD

Federal Grants Management Conference



AppleTree

# AppleTree is...

a nonprofit that develops and provides proven early childhood education programs to the most underserved three- and four-year-olds to close the achievement gap before students enter kindergarten



**AppleTree**

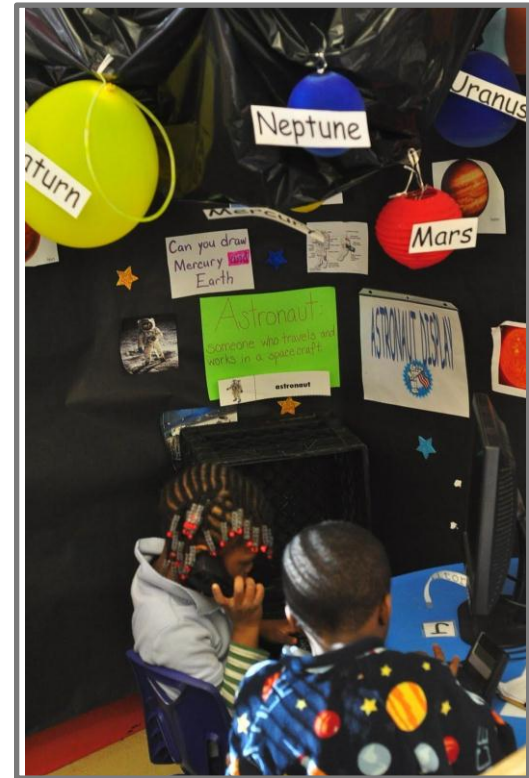
# Why Every Child Ready?

- Many children enter kindergarten far behind their advantaged peers and most only fall further behind in elementary school.
- Early childhood programs that develop young children's language, foundational academic and social-emotional skills can close the gaps and create a solid foundation for success in school and life.
- Most early childhood programs available to children in under-resourced communities are not effective enough to close the gaps.



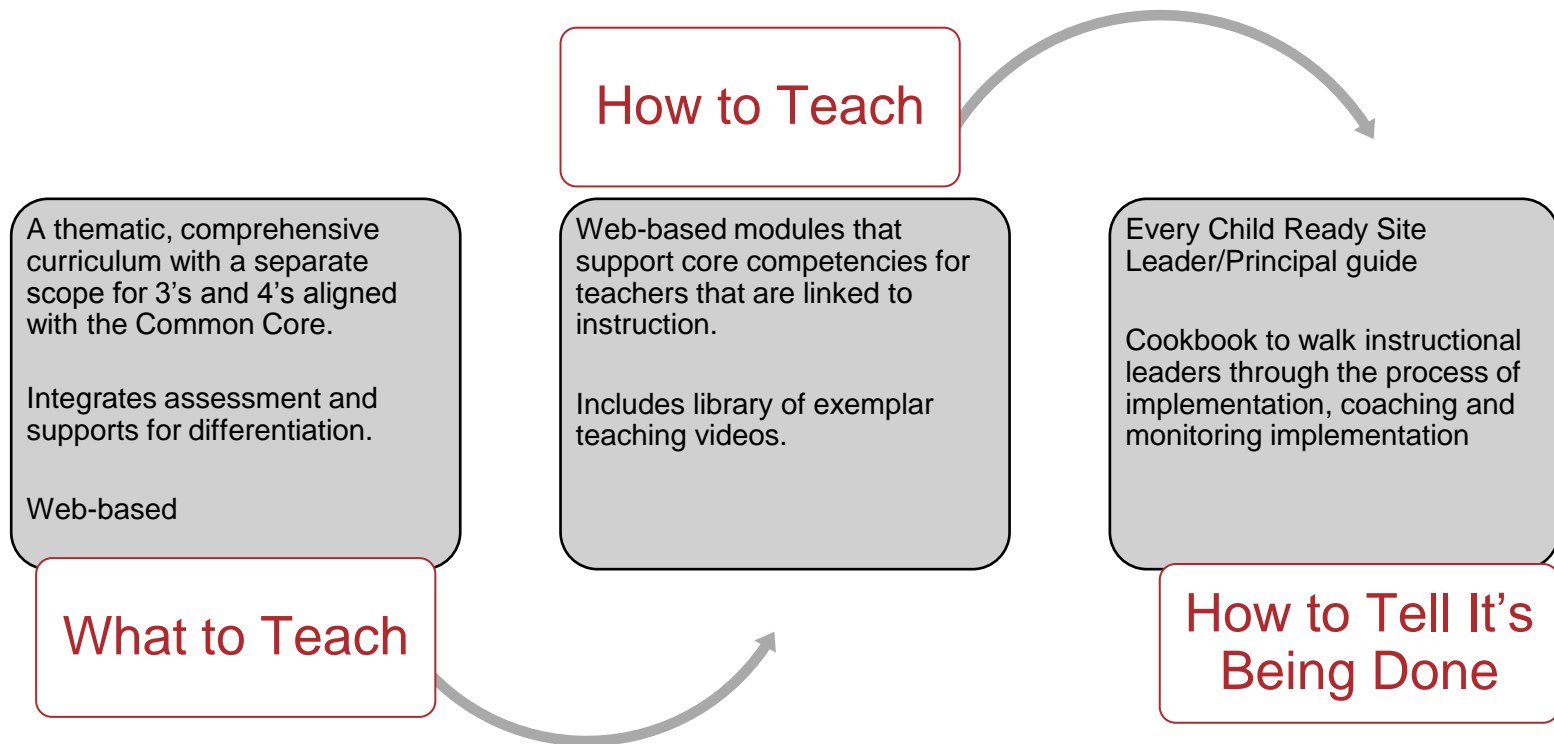
# Increasing Impact

- Through partnerships, AppleTree works with seven charters to implement Every Child Ready.
- In SY2013 over 1,600 children are in Every Child Ready supported classrooms.
- SY2012 outcome data for new non-AppleTree PCS classrooms show similar growth and achievement.



**AppleTree**

# Every Child Ready Instructional Model



# OSSE Dissemination Grant

GOAL: Disseminate knowledge and lessons learned from Every Child Ready implementation in participating partner schools.

1. Share best practices with local school-based leaders and increase their knowledge of AppleTree's evidenced-based instructional model, Every Child Ready.
2. Creation of the Every Child Ready Handbook and accompanying videos, which documents all of the systems, processes and tools necessary to implement the model.
3. Provide means for broad dissemination through "training the trainer" for both external audiences in DC but also for future cohorts of leaders within AppleTree Early Learning Public Charter Schools.



**AppleTree**

# 1. Share Best Practices

## **SY2012 DC LINKs: Leaders Investing in Our Nation's Kids**

***Tools for Increasing Instructional Effectiveness – originally held Tuesday, March 26***

AppleTree Institute's *Every Child Ready* model has defined the classroom structures and instructional strategies that research has identified as important for children's later learning. Participants in this webinar will understand *Every Child Ready's* available resources and tools to increase instructional effectiveness.

[Webinar recording: "Tools for Increasing Instructional Effectiveness"](#)

***Progress Monitoring for Young Children – originally held Tuesday, April 23***

AppleTree has developed *Every Child Ready Language and Literacy* and *Every Child Ready Math* progress monitoring assessments to help teachers quickly and reliably assess children's learning in these domains. Aligned with the Common Core, these assessments have been demonstrated to be predictive of children's scores on standardized assessments. Participants in the webinar will understand the purposes for progress monitoring and the basics of the *Every Child Ready* progress monitoring protocol.

[Webinar recording: "Progress Monitoring for Young Children"](#)

***Coaching to Improve Teaching and Learning for Young Children – originally held Tuesday, May 14***

This third webinar will build on the earlier two and demonstrate how to use data and a structured coaching model to improve teaching and learning for children. Participants in the webinar will understand *Every Child Ready's* data-driven coaching cycle and how to use data in a collegial and supportive manner when coaching teachers.

[Webinar recording: "Coaching to Improve Teaching and Learning for Young Children"](#)



**AppleTree**

## 2. ECR Handbook & Video Modules

ECR Instructional Leader Manual first draft completed and shared

ECR video modules completed for:

- In-class coaching
- Differentiated coaching meetings
- ECR Overview

Created scope and sequence for Principal Pedagogy Training (funded by subsequent OSSE SOAR awards):

- Early childhood development theory
- Early childhood curriculum
- Early childhood instruction
- Early childhood assessments across multiple domains
- National early childhood development and education best practices
- Vertical alignment across early childhood grades
- Organizational development
- Team building
- Classroom observations





# 3. Train the Trainer

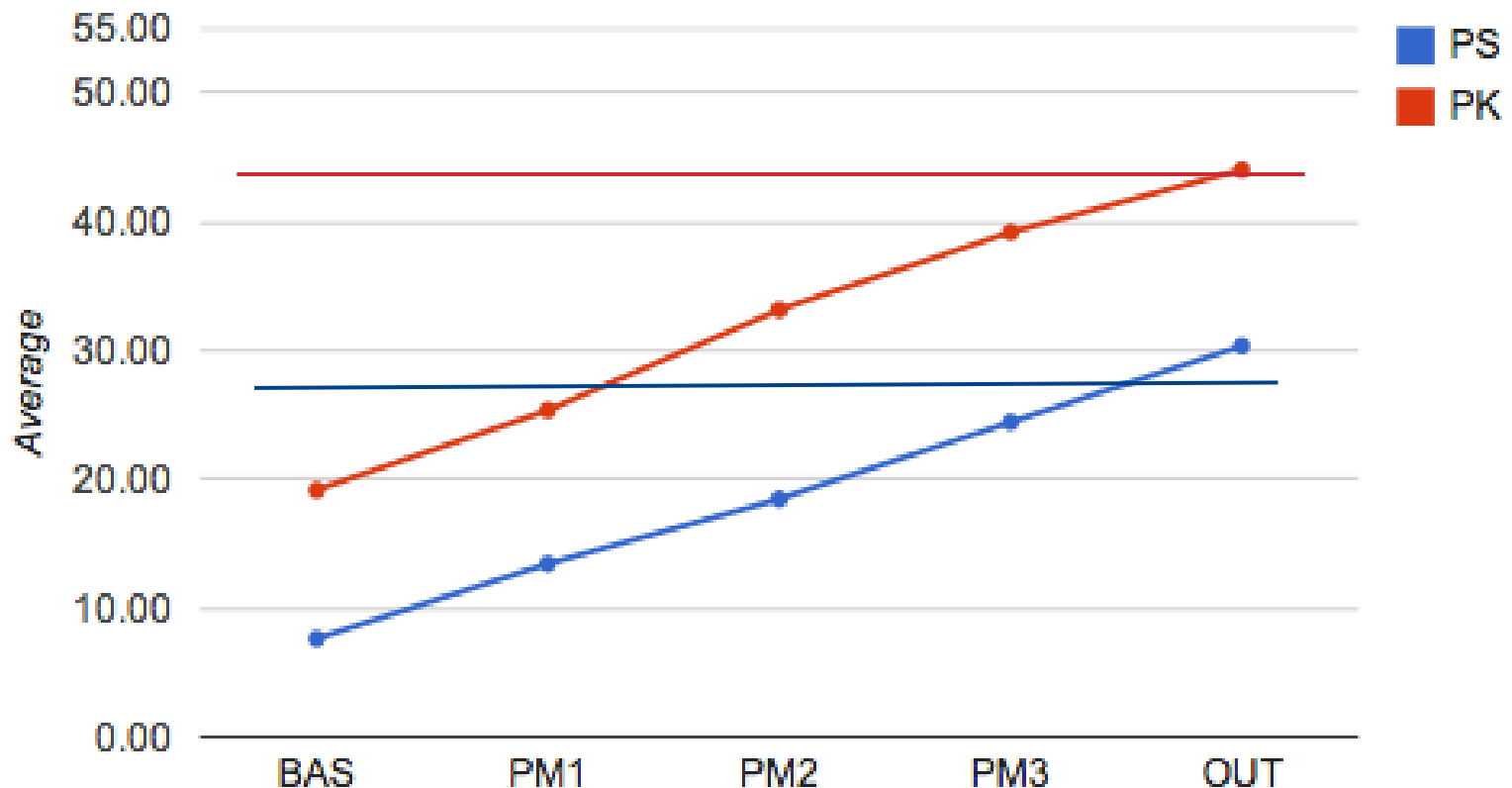
- Uses principles of implementation science and adult learning theory
  - Site-Based Instructional Leader paired with ECR Specialist
  - Workshops: Site-based leader learns content first; delivers to site teams
  - In-Class Coaching: I Do, We Do, You Do



# SY2012 Outcomes

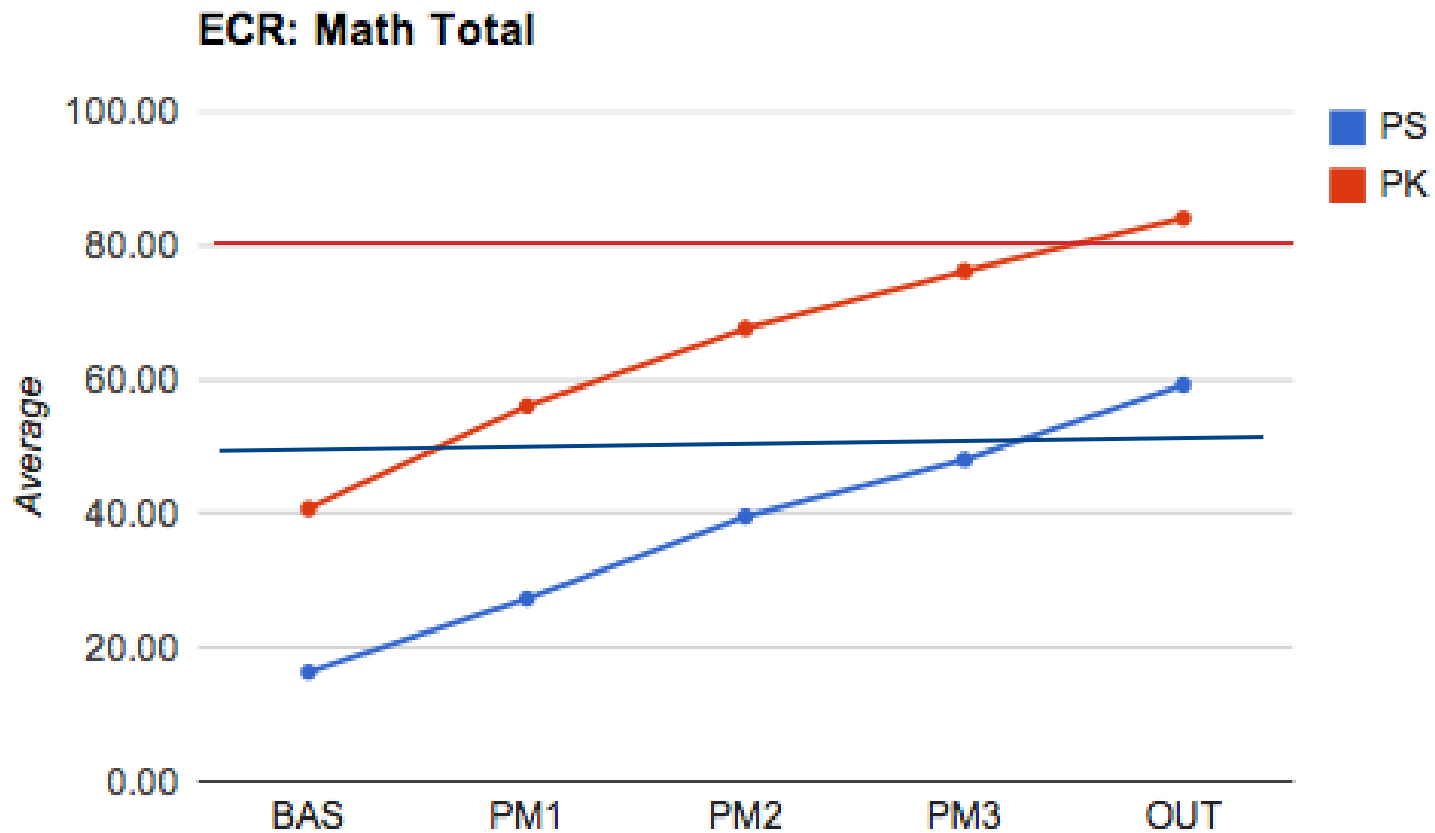
## ECR: Language & Literacy Growth

**ECR: Language and Literacy Total**



# SY2012 Outcomes

## ECR: Math Growth



# SY2012 Classroom Quality: Classroom Assessment Scoring System

	Emotional Support			Classroom Organization			Instructional Support		
	B	M	O	B	M	O	B	M	O
AELPCS	5.76	5.54	6.04	5.32	5.12	5.69	3.27	3.5	3.6
Partner Schools	5.66	5.68	5.62	5.24	5.16	5.13	2.96	3.65	3.23



# What's the Forecast?

- Continue research on durability of gains in elementary school.
- Complete Tiers 2 and 3 interventions
- Replicate in other regions or with different populations.



AppleTree