



State Early Childhood Development Coordinating Council (SECDCC)

May 15, 2024

Agenda

- Welcome and Introductions
- Access to Quality Child Care for Children with Disabilities Grant
- Ages & Stages Questionnaire (ASQ) Online Initiative
- Child Care and Development Fund (CCDF) Plan, Fiscal Years 2025-2027 (FY25-27)
- Child Care Emergency Preparedness and Response Plan
- Announcement and Public Comments
- Wrap Up



Access to Quality Child Care for Children with Disabilities Grant

Access to Quality Child Care for Children with Disabilities

- OSSE received budget authority to launch a grant program for child care for children with special needs in FY24.
- The purpose of the Access to Quality Child Care for Children with Disabilities grant program is to expand the supply of quality, accessible and affordable child care for infants, toddlers and school-age children with disabilities.
- The grant program will provide resources to child development facilities and out-of-school time programs licensed by the Office of the State Superintendent of Education (OSSE) to create and operate child care slots designed and equipped to meet the needs of infants, toddlers and school-age children with disabilities.
- The grant application is currently open and must be submitted through the Enterprise Grant Management System (EGMS).
- The application will close at 3 p.m. on June 20.

Access to Quality Child Care for Children with Disabilities

- The Access to Quality Child Care for Children with Disabilities grant program will be awarded on a competitive basis.
- Grant funds will support start up and operating costs for dedicated child care (including out-of-school time [OST] care) slots for children with disabilities.
- Grants will replace vouchers to pay for child care for participating children, but should supplement, not supplant, other sources of funding.
- OSSE anticipates awarding multiple grants to providers with capacity to serve up to 175 infants, toddlers and school-age children.
- OSSE will work with grantees to establish a referral program for families in need of child care for children with disabilities.

Eligibility

- Eligible applicants for this grant are:
 - Community-based nonprofit, for-profit or faith-based organizations that operate licensed child development centers caring for infants and toddlers and/or out-of-school time programs licensed by OSSE; or
 - Consortia of multiple organizations operating child development facilities or OST programs that agree to work together to support the effective implementation of the grant program across multiple facilities and organizations.
 - Facilities must have a signed subsidy agreement with OSSE to participate.
- Applicants must demonstrate the following competencies:
 - The capacity to work with children with disabilities and their families, including employing a qualified and trained staff, or a plan to hire or develop such staff, that can appropriately meet the needs of children with disabilities or special needs;
 - A commitment to inclusive child care services; and
 - Organizational and financial capacity to manage a grant-funded program and meet all program requirements.

Use of Funds

Funds can be utilized for the following purposes:

- Child care services;
- Compensation costs for specialized staff who possess the necessary expertise to care for children with disabilities and/or to improve adult-to-child ratios required for effective service delivery;
- Training and professional development to bolster staff abilities in caring for children with disabilities;
- One-time costs associated with minor facility enhancements or renovations to better accommodate children with disabilities. Purchase of supportive and adaptive materials, equipment or curriculum that augment the learning environment for children with disabilities;
- Provision of mental health or therapeutic services provided such services are supplemental to services provided through Strong Start, Healthy Futures or a child's health care provider(s);

Application Review Procedure



Applications are due no later than 3 p.m. on June 20, 2024



Applications that meet all eligibility and application requirements are evaluated, scored and rated by an external review panel



OSSE reviews the recommendations of the review panel and any other information considered relevant



Grantees will be announced by Aug. 30, 2024

Late or incomplete applications will not be reviewed or considered for an award.

Contact Information

Alejandra Londono-Gomez

Policy Analyst

Division of Early Learning (DEL)

OSSE

Phone: (202) 679-8406

Email: Alejandra.Londono-Gomez@dc.gov

Hakima Muhammad

Director of Operations and Budget

DEL

OSSE

Phone: (202) 727-2814

Email: Hakima.Muhammad2@dc.gov

[FY25 Access to Quality Child Care for Children with Disabilities Grant webpage](#)



ASQ Online Initiative

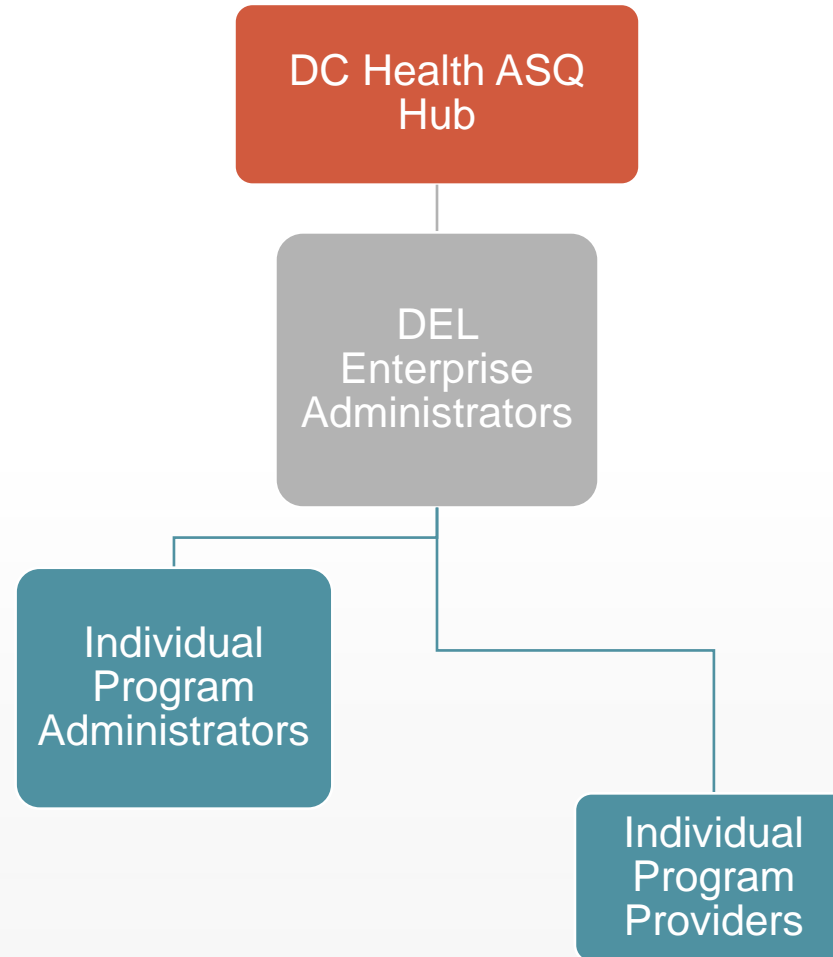
ASQ Online Initiative Background

- Partnership between DC Health and OSSE began in 2020 to develop an action plan to reduce developmental screening duplication across agencies in DC and to increase communication with families across agencies.
- The purpose of the initiative is to create a District-wide system of coordinated developmental screening for children 0-3 years old and to ensure that families have adequate opportunity to receive eligibility evaluations.

Initiative Partnership Structure

- OSSE DC Early Intervention Program (DC EIP)
 - Strong Start Child Find (FY21)
 - Quality Improvement Network (QIN) (FY22)
 - Early Head Start (EHS) (FY23 – current)
 - Subsidy Programs (FY24-FY25)
- DC Health
 - Help Me Grow
 - Maternal, Infant and Early Childhood Home Visiting (MIECHV)
 - Healthy Steps

ASQ Online Initiative Background



ASQ Online Initiative Scope

- Current Program Scope
 - Currently in 27 total programs
 - 23 EHS programs left to expand to
 - Activate QIN Family Homes Account (as classrooms)
 - Activate Strong Start Service Coordinator Account for ASQ:SE-2 (Social Emotional)
 - Provide activation and ongoing technical assistance (TA) for all participating programs (50 QIN/EHS)
- Expansion Scope
 - Recruit and activate 50 subsidy (non-QIN/EHS) programs in FY24
 - Expand to all 234 total subsidy programs FY25-FY26
 - Establish ASQ Online technical assistance office hours for QIN/EHS/subsidy programs

Tiered System of Technical Assistance

- Tier 1: Large Group - ASQ Online Implementation Training
- Tier 2: Small Group - Providers vs. Program Administrators
- Tier 3: One on One - As needed



CCDF Plan, FY25-FY27

CCDF State Plan Milestones and Timeline

Month	Milestones
September – December 2023	<ul style="list-style-type: none"> • Early consultation with SECDCC (August) • Presentation on alternative methodology/cost modeling for SECDCC (December)
January – March 2024	<ul style="list-style-type: none"> • CCDF State Plan community engagement sessions • Consult with SECDCC and gather input
April – May 2024	<ul style="list-style-type: none"> • Continue consultation with partners • Publish CCDF DRAFT State Plan on OSSE website • Hold public hearing and collect public comment on draft plan
June 2024	<ul style="list-style-type: none"> • Update the draft CCDF Plan based on public comment • Finalize CCDF Plan • Submit final CCDF Plan to Administration of Children and Families (ACF) – due July 1
July – September 2024	<ul style="list-style-type: none"> • Post final CCDF Plan on OSSE’s website (30 days after submission) • Post Alternative Cost Methodology (30 days after it is completed) • OSSE responds to questions from ACF and revises plan as needed
October 2024-September 2027	<ul style="list-style-type: none"> • OSSE amends approved CCDF state plan as needed to reflect changes in policy or practice

Stakeholder Engagement

- OSSE staff participated in a townhall hosted by Under 3 DC Coalition on March 16.
 - Child care leaders, teachers and parents gave feedback on CCDF Plan topics.
- OSSE hosted three listening sessions for SECDCC members and other stakeholders on:
- Quality improvement activities
 - Supply building
 - Child Care subsidy program
- Thank you to all who participated and gave feedback!

Public Hearing on CCDF State Plan

- OSSE will host two virtual public hearing sessions on **Wednesday, May 29, 2024, at 6 p.m. and Thursday, May 30, 2024, at 11 a.m.**
 - The public hearing will be held on Zoom. The public can register to attend and/or provide testimony at this [registration link](#).
- OSSE will post the draft plan by May 20, 2024 on the OSSE [website](#).
- To provide written public comment or feedback on the proposed FY25-FY27 CCDF plan:
 - Submit comments using the [public comment form](#).
 - Send an email to OSSE with your osse.ccdf@dc.gov.
 - **All written comments must be received by 4 p.m. on June 4, 2024.**
- For questions or comments on DC's CCDF Plan, please email osse.ccdf@dc.gov.



Child Care Emergency Preparedness and Response Plan (CCEPRP)

Statewide Disaster Plan for Child Care

- OSSE, as the lead agency for the CCDF, plays an important role in the preparation and support of child care facilities in preparing for, responding to and recovering from an emergency.
- Federal CCDF regulations require state, territorial and tribal lead agencies to develop and implement a statewide disaster plan for child care.
- The CCEPRP is an operational plan for emergency incidents affecting child care facilities across the District of Columbia that require action by OSSE's Division of Early Learning (DEL).
- The CCEPRP includes:
 - Coordinating and collaborating with key partners;
 - Guidelines for continuation of child care subsidies and services;
 - Coordination of post-disaster recovery of child care services; and
 - Requirements for CCDF providers and other child care providers.

Emergency Levels

Level IV	Steady State
This is when the District is operating under normal operational procedures.	
Level III	Single-site Event
This is a site-based event affecting only one child care facility (e.g., events due to hazardous materials, fire, armed assailant, etc.). This type of event would not warrant an activation of this plan in its entirety, but the procedures and protocols detailed in this plan may be executed to support the child care facility, staff and families served.	
Level II	Localized Event
This is a local event that impacts more than one child care facility, neighborhood or area of the District, such as a widespread power outage, fire or flooding. Depending on the magnitude of the event, some, or all components of the CCEPRP may be activated.	
Level I	District-wide Emergency
This is a District-wide, regional, national or global event that impacts several child care facilities in the entire or large sections of the District, such as an earthquake, pandemic, terrorism, etc. An event of this scale will result in the activation of the emergency response through Homeland Security and Emergency Management (HSEMA) and activation of the entirety of this plan.	

The CCEPRP includes information on:

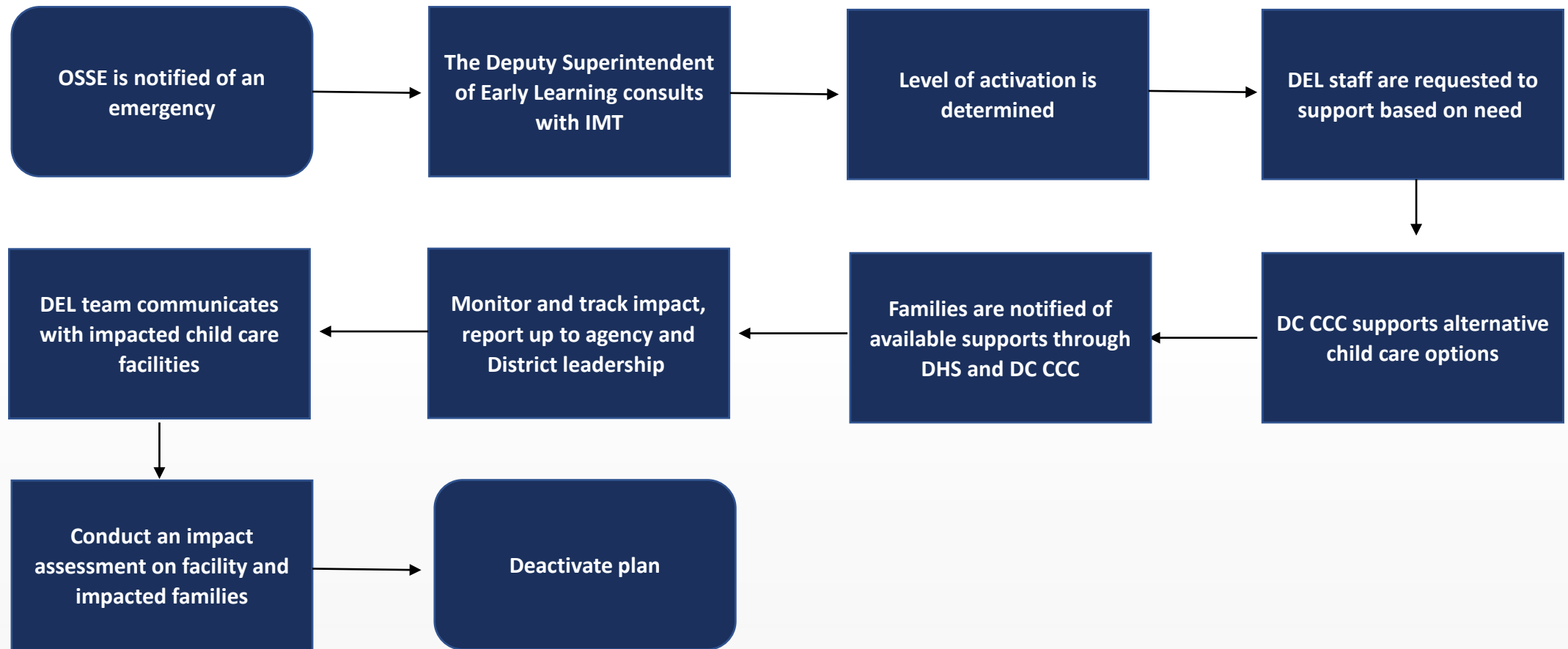
- What operations and key functions and collaboration with other DC agencies looks like when there is not a disaster or emergency.
- Key roles and responsibilities before, during and after an emergency or disaster.
- Training and preparation of OSSE and DEL staff.
- Operations during a disaster or emergency.
- Operations during recovery from a disaster or emergency.

CCEPRP Coordination with Agency Partners in Emergency

In an emergency, OSSE coordinates with many agency and partner organizations to meet the needs of the child care community, including:



CCEPRP Activation Flowchart



OSSE will ensure the CCEPRP is:

- Shared with OSSE and DC executive leadership;
- Shared publicly on OSSE's website;
- Submitted to HSEMA for review and inclusion in the District of Columbia Emergency Operations Plan (EOP) and the District Office of Risk Management (ORM) for review and approval;
- Provided to all DEL personnel in print and shared electronically;
- Shared with partnering agencies to promote inter-agency coordination;
- Shared with key stakeholders, such as grantees and contractors, local businesses, volunteer organizations, nonprofits and microloan partners for awareness;
- Made available in additional languages per the DC Language Access Act, upon request; and
- Reviewed and updated as needed to incorporate changes in District regulations and response procedures.

Questions or Feedback

Please share anything that you would like to make sure OSSE considers as we finalize the plan. Questions to consider:

- How should we be sharing the plan with stakeholders/facilitating their understanding of OSSE's and other agencies' roles in emergency preparedness?
- What questions does the group have about the roles of OSSE, other agencies, DC CCC and child development facilities in responding to an emergency or disaster?
- How can OSSE best support child development facilities in preparing for potential emergencies or disasters?



Announcements and Public Comment



Wrap Up and Next Steps