



DISTRICT OF COLUMBIA

OFFICE OF THE STATE SUPERINTENDENT OF

EDUCATION

Meeting:	State Early Childhood Development Coordinating Council (SECDCC)	
Date/ Time:	April 27, 2022 2-3:30 p.m.	
Location:	Microsoft Teams	
Agenda Items		
I. Welcome		Sara Mead Office of the State Superintendent of Education (OSSE)
II. Vaccinations for children ages 0-5		Hillary Desir Office of the Deputy Mayor for Education
III. Early Childhood Educator Equitable Compensation Task Force update		Abigail Smith BueSkyEducation
IV. Capital Quality updates		Dr. Kathryn Kigera OSSE
V. Updates on well-child pediatric visits, Managed Care Organizations and data on children receiving Medicaid		Colleen Sonosky Department of Health Care Finance
VI. OSSE Fiscal Year 2023 (FY23) Budget Overview		Sara Mead
VII. Wrap-Up/Next Steps/Adjourn		Sara Mead



State Early Childhood Development Coordinating Council

April 27, 2022

Agenda

- Welcome
- Vaccinations for children ages 0-5
- Early Childhood Educator Equitable Compensation Task Force Update
- Capital Quality Update
- Monitoring Early and Periodic Screening, Diagnostic, and Treatment Services (EPSDT): Utilization of Preventive Care for Children in Medicaid/Children's Health Insurance Program (CHIP)
- Office of the State Superintendent of Education (OSSE) Fiscal Year 2023 Budget Overview
- Wrap-up/next steps/adjourn





Capital Quality Updates

Quick reminder: What is Capital Quality?

- DC's quality rating and improvement system for child care facilities
- Four major program components:
 - One-on-one technical assistance by a quality facilitator
 - Completion of a continuous quality improvement plan
 - Public facing profile on My Child Care DC
 - Capital Quality designation
- The Capital Quality designation is based on observation data using the Classroom Assessment Scoring System (CLASS) and Environment Rating Scales (ERS)



The Division of Early Learning received feedback from the community related to Capital Quality observations

- Concerns regarding using observations for high stakes purposes, given the potential impacts of COVID-19.
 - For example, health and safety practices (e.g., masking, increased focus on cleaning), staff turnover and the emotional impacts of the pandemic on children and staff.
- Office of Head Start decided not to use CLASS observations in this program year.
- Data for CLASS is still extremely important for professional development purposes, as well as for us to understand the ongoing impact the public health emergency may or may not have had on interactions in the classroom.



On March 24, 2022 OSSE issued an update on observations for the 2021-2022 program year

- Observation data collected will not be used to calculate Capital Quality ratings or to assign a Capital Quality designation.
- Capital Quality participants will maintain their current Capital Quality designations in fiscal year 2023.
- The Division of Early Learning will continue to implement the hold harmless policy based on the original timeline.



Hold Harmless Policy

Action	Pilot and Group Two	Group Three	Group Four	Group Five
Capital Quality designation determined.	Fall 2019			Not Applicable (N/A)
Tiered reimbursement changes only if a facility's designation is higher.	Fall 2019			N/A
Hold harmless policy ends; tiered subsidy reimbursement rates align to facility's designation whether higher or lower.	Fall 2020	Fall 2021	Fall 2022	N/A

Note: Child development facilities in Group Five entered into a Provider Agreement for Subsidized Child Care Services with OSSE or voluntarily elected to participate in Capital Quality on or after Oct. 1, 2018 on a rolling basis.



Where we are now

- CLASS observations are underway and programs are receiving program level and classroom level reports.
- Data from CLASS observations will be included in the annual pre-K report that OSSE publishes.
- The ERS observation contract has not been awarded for the 2021-2022 program year.





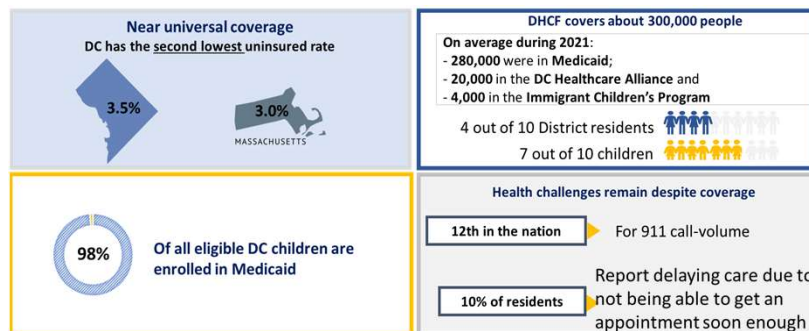
Monitoring EPSDT: Utilization of Preventive Care for Children in Medicaid/CHIP

DHCF/Division of Children's Health Services

SECDCC
April 27, 2022



Medicaid plays a key role in the District's health care delivery system by providing coverage to 40% of all District residents



*Source: U.S. Census Bureau, 2019 American Community Survey 1-year estimates; DHCF Medicaid Management Information System (MMIS) data extracted in November 2021; Haley et al., "Progress in Children's Coverage Continued to Stall Out in 2018," Urban Institute, October 2020.



Serving Children through the Health Care System in the District of Columbia



DC MEDICAID DELIVERY SYSTEM	
<p>Managed Care Program</p> <ul style="list-style-type: none"> AmeriHealth Caritas DC CareFirst Community Health Plan HSCSN MedStar Family Choice <p>>90% of Medicaid Children</p>	<p>Fee-for-service Program ("Straight Medicaid")</p> <ul style="list-style-type: none"> Children with disabilities not residing in an institution Children residing in LTC facilities DYRS-linked children Children under custody of CFSA (foster care/ adopted) <p>10% of Medicaid Children</p>
<p>Provider types serving children in DC:</p> <ul style="list-style-type: none"> FQHCs (e.g. Unity, Mary's Center, Community of Hope) Facility-based (e.g. Children's National, Howard University, Georgetown) <ul style="list-style-type: none"> Provider practice groups 	



EPSDT Medicaid Benefit for Children



Access

- State duty to inform families of benefit and services their children are entitled to and provide assistance so that children can receive the services they need



Screenings and Education

- Assessments (and documentation) of physical, developmental and behavioral health in pediatric primary care visits
- Health education and counseling to parents



Diagnosis and Treatment

- When screenings/visits uncover health concerns, EPSDT requires coverage of services needed to diagnose and treat the concerns
- Medically necessary services must be covered as long as they fall in the federal categories of Medicaid services, and regardless of whether they are in the individual State's Medicaid Plan



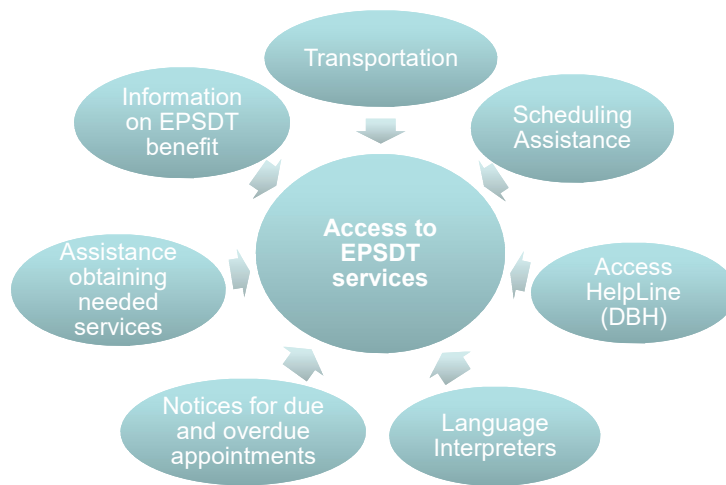
DC Medicaid HealthCheck Periodicity Schedule

KEY: * = to be performed, - = risk assessment to be performed with appropriate action to follow, if positive, ← → = range during which a service may be provided

AGE	OPT CODE	PRENATAL	NEWBORN	1-4 Y	5 Y	6 Y	7 Y	8 Y	9 Y	10 Y	11 Y	12 Y	13 Y	14 Y	15 Y	16 Y	17 Y	18 Y	19 Y	20 Y	
PHYSICAL EXAMINATION	93201-C 93201-D	*	*	*	*	*	*	*	*	*	*	*	*	*	*	*	*	*	*	*	*
MEASUREMENTS		*	*	*	*	*	*	*	*	*	*	*	*	*	*	*	*	*	*	*	*
Length/Height and Weight		*	*	*	*	*	*	*	*	*	*	*	*	*	*	*	*	*	*	*	*
Head Circumference		*	*	*	*	*	*	*	*	*	*	*	*	*	*	*	*	*	*	*	*
Weight for Length		*	*	*	*	*	*	*	*	*	*	*	*	*	*	*	*	*	*	*	*
BMI (Body Mass Index)		*	*	*	*	*	*	*	*	*	*	*	*	*	*	*	*	*	*	*	*
Blood Pressure		*	*	*	*	*	*	*	*	*	*	*	*	*	*	*	*	*	*	*	*
ANTICIPATORY GUIDANCE		*	*	*	*	*	*	*	*	*	*	*	*	*	*	*	*	*	*	*	*
Oral Health Assessment	D0394																				
Fluoride Varnish	D9188																				
VISION SCREENING																					
Visual	98173, 98174																				
Hearing	92281-C, 92282																				
DEVELOPMENTAL/BEHAVIORAL SCREENING																					
Developmental Subscreening	98910																				
Developmental Screening	98910																				
Autism Spectrum Disorder Screening	98910																				
Psychosocial/Behavioral Subscreening	98127																				
Psychosocial/Behavioral Screening	98127																				
Tobacco, Alcohol, or Drug Use Screening	96103																				
Behavioral Health Screening	96127																				
Mental Depression Screening	96151																				
PHYSICIAN																					
Immunization	90400-C, 90401-C	*	*	*	*	*	*	*	*	*	*	*	*	*	*	*	*	*	*	*	*
Medication Screening	93201-C, 93201-D, 93201-E, 93201-F, 93201-G, 93201-H, 93201-I, 93201-J, 93201-K, 93201-L, 93201-M, 93201-N, 93201-O, 93201-P, 93201-Q, 93201-R, 93201-S, 93201-T, 93201-U, 93201-V, 93201-W, 93201-X, 93201-Y, 93201-Z	*	*	*	*	*	*	*	*	*	*	*	*	*	*	*	*	*	*	*	*
Lead	83555																				
Anemia	83081																				
Diabetes	86030																				
Tuberculosis	86400																				
Cervical Dysplasia	91000																				
Sexually Transmitted Infections	86200																				



Access to EPSDT services





DC HealthCheck Training & Resource Center



HealthCHECK
Training & Resource Center
Materials on Medicaid's EPSDT benefit for DC providers & families

District of Columbia Department of Health Care Finance (DHCF) & Bright Futures at Georgetown University

- ✓ Required on-line training for pediatric providers serving Medicaid children
- ✓ On-line Fluoride Varnish Training for PCPs
- ✓ EPSDT & Dental Periodicity Schedules
- ✓ Outreach materials
- ✓ Materials from DHCF and CMS (e.g., COVID-related information)

www.dchealthcheck.net



CMS-416 Form: Assessing Children's Utilization of EPSDT Services

- To assess the effectiveness of each state's EPSDT benefit, the Centers for Medicare and Medicaid Services (CMS) collects children's enrollment and utilization data on the CMS-416 Form
- DHCF submits a DC-wide CMS-416 on an annual basis.
- MCOs submit quarterly and annual MCO-416 reports to DHCF
- District-wide & MCO-specific annual 416 reports are submitted to Court per Salazar Requirements

FORM CMS-416: ANNUAL EPSDT PARTICIPATION REPORT										
Data Code	Plan Type	Totals	Age Group 0-1		Age Group 1-2		Age Group 3-5		Age Group 6-18	
			Enroll	Particip	Enroll	Particip	Enroll	Particip	Enroll	Particip
1a. Total Individuals eligible for EPSDT	CMS	0	0	0	0	0	0	0	0	0
1b. Total Individuals eligible for EPSDT for W/ Centralized Data	CMS	0	0	0	0	0	0	0	0	0
1c. Total Individuals Eligible under a CMS Medicaid Expansion	CMS	0	0	0	0	0	0	0	0	0
2. Total Periodicity Schedules	Med	0	0	0	0	0	0	0	0	0
2a. Number of Years (in Age Group)			1	0	0	0	0	0	0	0
2b. Total Periodicity Schedules	CMS	0	0.000	0.000	0.000	0.000	0.000	0.000	0.000	0.000
3a. Total Minutes of Services	CMS	0	0	0	0	0	0	0	0	0
3b. Average Minutes of Services	CMS	0.000	0.000	0.000	0.000	0.000	0.000	0.000	0.000	0.000
4. Expected Number of Services per Enroll	CMS	0.000	0.000	0.000	0.000	0.000	0.000	0.000	0.000	0.000
5. Expected Number of Services per Particip	CMS	0	0.000	0.000	0.000	0.000	0.000	0.000	0.000	0.000
6. Total Services Provided	CMS	0	0	0	0	0	0	0	0	0
7. Services by Plan Type	CMS	0.000	0.000	0.000	0.000	0.000	0.000	0.000	0.000	0.000
8. Total Minutes (in State) Provided at Least One Hour Per Visit	CMS	0	0	0	0	0	0	0	0	0
9. Total EPSDT Services Provided at Least One Hour Per Visit	CMS	0	0	0	0	0	0	0	0	0
10. PARTICIPANT RATIO	Med	0.000	0.000	0.000	0.000	0.000	0.000	0.000	0.000	0.000



What information does the CMS-416 Form capture?



- CMS-416 Form captures children’s preventive services utilization for a given fiscal year, including:
 - Well-child visits and necessary screenings
 - Dental Services furnished by dentists and oral health services furnished by PCPs
 - Lead screens
- Only children enrolled in DC Medicaid for 90 continuous days are included in the analyses (line 1b) conducted by DCHS for EPSDT performance monitoring
- This form only captures utilization (number of visits) and does not tell the story of whether the appropriate care was given, nor the effectiveness of the care received.



D.C. Medicaid-Enrolled Children Receiving Well-Child Visits



CMS 416	DC FY 19	DC FY20	DC FY21	FY19 US
Participant Ratio (0-20)	63%	50%	54%	60%
Under 1	92%	88%	92%	92%
1-2	78%	74%	71%	81%
3-5	68%	52%	55%	71%
6-9	62%	45%	54%	56%
10-14	63%	47%	54%	56%
15-18	55%	43%	48%	47%
19-20	34%	25%	27%	25%

CMS Form 416, Annual EPSDT Participation Report, DC Submission of FYs 19-21



Contact Info for DCHS



- **Department Of Health Care Finance**
441 4th Street, NW 9th Floor South, Washington, D.C. 20001
Main Number (202) 442-5988 * Fax (202) 722-5686
<http://dhcf.dc.gov/>
www.dchealthcheck.net
- **Division of Children's Health Services email: dchs@dc.gov**
 - Colleen Sonosky, Associate Director – 202-442-5913, colleen.sonosky@dc.gov
 - Gwendolyn Bell, Program Analyst, 202-442-5957, gwen.bell@dc.gov
 - Adaeze Okonkwo, Management Analyst, 202-899-3653, adaeze.Okonkwo@dc.gov
 - Deborah Vishnevsky, Management Analyst, 202-899-3624, Deborah.Vishnevsky@dc.gov



Fiscal Year 2023 (FY23) Budget Overview

FY23 Budget Overview

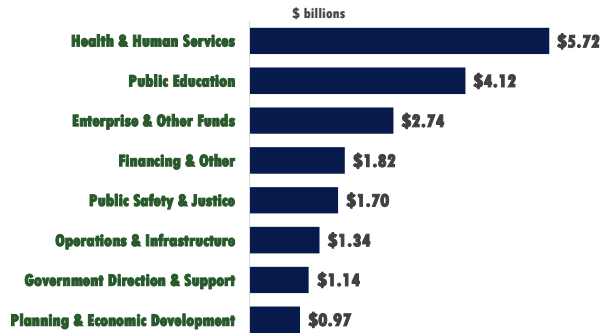
OPERATING BUDGET

- **\$12 billion** general funds budget
- **\$10.7 billion** local funds budget
- Local funds increase of **\$1.3 billion** or **14 percent** over FY22 approved budget
 - This growth includes significant **one-time investments**, such as \$409 million for HPTF. Growth is **~6 percent** when one-time investments are excluded.

MOST SIGNIFICANT INCREASED INVESTMENT

Schools, Affordable Housing, Human Support Services, and Facilities Maintenance, plus Debt Service to support planned capital investments

PROPOSED FY23 OPERATING SPENDING



FY 2023 PROPOSED BUDGET AND FINANCIAL PLAN

WE ARE DC GOVERNMENT OF THE DISTRICT OF COLUMBIA
MURIEL BOWSER, MAYOR



Education

- A **5.87 percent** increase in the base amount of the Uniform Per Student Funding Formula (UPSFF)
- **\$18 million** to provide stability to schools through the Pandemic Supplement fund
- **Historic \$43.6 million investment** in FY23 to replace aging HVACs and boilers in schools
- **\$15 million** for preventative maintenance of HVACs and boilers to ensure systems work year-round
- **\$3.8 million** to safeguard students' mental health with additional supports through the school-based mental health program
- **\$35 million** to stand up a community-based program at Winston Education Campus with state-of-the-art laboratory equipment for hands-on learning

YOUTH RECREATION OPPORTUNITIES

- **\$5 million** to extend out-of-school time grant opportunities and preserve continuity to youth
- **\$3.9 million** to expand out-of-school-time recreation programs provided by DPR and community-based organizations, focusing on athletics, visual arts, performing arts, e-sports, culinary arts, and more
- **\$6.4 million** to continue our expansion of the Marion Barry Summer Youth Employment Program

FY 2023 PROPOSED BUDGET AND FINANCIAL PLAN

WE ARE DC GOVERNMENT OF THE DISTRICT OF COLUMBIA
MURIEL BOWSER, MAYOR

OSSE Budget – Structural Overview

- OSSE's budget includes three budget codes:

Agency Code	Agency	FY23 Proposed Operating Budget
GD0	OSSE main	\$1,061,501,910
GN0	Non-Public Tuition	\$59,069,776
GO0	Special Education Transportation	\$122,102,334



FY23 Budget Includes Funding For Key Early Learning Programs

Activity	Amount	Notes
Child Care Subsidy Payments	\$63,652,799	Local funds only. Total subsidy budget also includes: <ul style="list-style-type: none"> Funds transferred from DHS: \$33.9 million Federal CCDF funds: \$31.5 million Total: \$118 million (maintains FY22 funding level)
Early Childhood Educator Pay Equity Fund	\$72,889,092	
Access to Quality	\$5,000,000	District Recovery Plan (Treasury ARP Funds)
Back to Work Child Care	\$15,805,251	District Recovery Plan (Treasury ARP Funds)
DC LEAD Early Educator Scholarships & Incentives	\$4,650,000	District Recovery Plan, CCDF and local funds
DEL Quality Grants	\$3,700,000	CDA, Building & Sustaining Quality

- Local budget includes \$355,000 enhancement for Division of Early Learning data systems.

