



Schoolwide Program Design

FY22 ESEA Titles I-IV Consolidated Application Webinar

K-12 Systems and Supports

Goals

1. Why the comprehensive needs assessment is an essential component of developing schoolwide program plans
2. The required stakeholders who must be involved in the development and evaluation of schoolwide program plans
3. Core elements of schoolwide programs
4. The purpose of the annual evaluation
5. The cycle of schoolwide program planning and revision



Comprehensive Needs Assessment



Why Perform a Needs Assessment?

Conclusions of a needs assessment:

- Clearly identify their most critical areas for improvement.
- Inform the strategies and activities chosen for the schoolwide program and;
- Indicate the appropriate metrics of success to evaluate the plan's effectiveness in improving outcomes

Legal Requirements

- ESEA Section 1114(b)(6) requires the schoolwide program to be based on a CNA of the entire school.
- CFR § 200.26 identifies the CNA as a core element of a compliant schoolwide program

7/13/2022

4

What is the needs assessment process?

Collect data



Make conclusions



Identified needs



Develop goals

Data Collection

Assessments

Formative

Benchmark

Districtwide
Summative

Students

Demographic

Discipline

Engagement

Feedback

Parents and
Families

School Leaders

Teachers and Staff

Community
Members

Data Analysis

Questions to Consider

- What are the strengths and the challenges of the current school program?
- Does the evidence gathered support staff assumptions about strengths and needs?
- Are there information gaps? What more do we need to know?
- What themes, patterns and trends are present?
- What priorities does the information suggest?

Needs Assessment Methods

- The comprehensive needs assessment can take several forms, as long as it identifies needs, and prioritizes the needs to set the goals of the schoolwide program.
- The method should create a document or set of documents that schools can use to demonstrate compliance and to inform the annual evaluation.

Methods Complete a school profile in a template developed by the LEA

Perform a root cause analysis

Use problem statements and the “five whys”

Core Elements of the Needs Assessment

Based on the academic achievement information of all students, including students identified in the DC School Report Card sub-groups

Helps the school understand the subjects and skills for which teaching and learning need to be improved

Identifies the specific academic needs of students and groups of students who are not yet achieving the academic standards

Assesses the needs of the school relative to each of the components of Title I schoolwide programs

Must be developed with the participation of the people who will carry out the plan

Documentation of how it conducted the needs assessment, the results obtained and the conclusions drawn from the results

The Needs Assessment in the ConApp

- OVERVIEW
- CONSOLIDATED SCHOOLWIDE PROGRAM
- PROGRAM PLAN
- PROGRAM ACTIVITIES BUDGET

Consolidated Schoolwide Program Plan

1. What are the needs of the schools in the LEA identified by the comprehensive needs assessment, particularly the needs of children who are failing, or at-risk of failing to meet the academic standards? (Section 1114(b)(6))

- OVERVIEW
 - LEA PLAN
 - PARENT AND FAMILY ENGAGEMENT
 - TITLE I PROGRAM
 - TITLE IA SET-ASIDES
 - PROGRAM PLAN
 - PROGRAM ACTIVITIES BUDGET
- ### Program Plan Strategies

Strategy#1

Explain the need this strategy is addressing, evidence to support the strategies use and how the strategy will raise student achievement. In the explanation, describe the alignment of the activities, the strategy and the program goals.





Schoolwide Program Plan



Schoolwide Programs

What *is* a schoolwide program?

A comprehensive reform program designed to upgrade the entire educational program of a Title I school.

The design of a schoolwide program ensures that all students, particularly those who are low-achieving or at-risk of failure, demonstrate proficient and advanced levels of achievement

Schoolwide Programs

What are the *goals* of a schoolwide program?

The goals are specific to the school and informed by the needs identified in the needs assessment

Schoolwide goals may be linked to LEA-wide goals, focus areas, or priorities

Schoolwide Program Planning Cycle

Year	Fall	Winter	Spring	Summer
First Year	Conduct a comprehensive needs assessment and perform data analysis		Identify needs and priorities	Develop the schoolwide program plan
Implement the schoolwide program plan and monitor student progress				
Subsequent Years	Conduct an evaluation (or new comprehensive needs assessment, if appropriate) of the prior year's schoolwide program plan		Identify what's working and what needs improvement	Revise the schoolwide program, plan, strategies or activities as needed

Planning Team and Required Stakeholder Input

Schoolwide program plans must be developed with:

- ✓ Parents
- ✓ Teachers
- ✓ Principals
- ✓ Other school leaders
- ✓ Paraprofessionals
- ✓ Administrators
- ✓ Specialized instructional support staff
- ✓ Students (secondary schools only)
- ✓ Technical assistance providers

Core Elements of the Schoolwide Program Plan

Improves the academic achievement of:

- All students in the school
- Particularly, students most at-risk of failure
- Close any achievement gaps between groups of students identified in the DC School Report Card

Has evidence-based strategies to:

- Strengthen the academic program of the school
- Increase the amount and quality of learning time
- Provide an enriched and accelerated curriculum

Required Components of a Schoolwide Program (con't)

Instruction by highly effective teachers:

- Include strategies to attract highly effective teachers
- Provide high-quality and on-going professional development (aligned with academic standards)
- Devote sufficient resources to carry out the professional development
- Include teachers in professional development activities using student data

Schoolwide Program Plans

What is a schoolwide program *plan*?

The plan of action to improve the school's educational program and close achievement gaps

The collection of strategies chosen to achieve the goals of the schoolwide program

The Schoolwide Program Plan in the ConApp

OVERVIEW

LEA PLAN

PARENT AND FAMILY
ENGAGEMENT

TITLE I PROGRAM

TITLE IA SET-ASIDES

PROGRAM PLAN

PROGRAM ACTIVITIES
BUDGET

Program Plan Strategies

Instructions: Enter the strategies in the unconsolidated Title I program plans in the box indicating the name of the strategy. Then summarize the activities that will be funded to implement the plan strategy.

Strategy#1

OVERVIEW

CONSOLIDATED
SCHOOLWIDE
PROGRAM

PROGRAM PLAN

PROGRAM ACTIVITIES
BUDGET

Program Plan Strategies

Instructions: Enter the strategies chosen to improve the educational program of consolidated schoolwide program schools in the box indicating the name of the strategy. Then summarize the activities that will be funded to implement the plan strategy. Describe the alignment of the activities, the strategy and the program goals.

Strategy#1



Schoolwide Program Strategies

What are schoolwide program *strategies*?

If the schoolwide program goal is the “what”, the plan’s strategies are the “how”

Strategies are the components of schoolwide program plans

The Schoolwide Program Strategies in the ConApp

Instructions: Enter the strategies in the unconsolidated Title I program plans in the box indicating the name of the strategy. Then summarize the activities that will be funded to implement the plan strategy.

Strategy#1

Instructions: Enter the strategies chosen to improve the educational program of consolidated schoolwide program schools in the box indicating the name of the strategy. Then summarize the activities that will be funded to implement the plan strategy. Describe the alignment of the activities, the strategy and the program goals.

Strategy#1

Explain the need this strategy is addressing, evidence to support the strategies use and how the strategy will raise student achievement. In the explanation, describe the alignment of the activities, the strategy and the program goals.

(0 of 5000 maximum characters used)

Schoolwide Program Budgeted Activities

What are schoolwide program *activities*?

The schoolwide plan consists of specific activities to execute the strategies that are named in the program

One LEA-wide strategy may be performed by different activities at different schools within the LEA

The Schoolwide Program Activities in the ConApp

OVERVIEW	LEA PLAN	PARENT AND FAMILY ENGAGEMENT	TITLE I PROGRAM	TITLE IA SET-ASIDES	PROGRAM PLAN	PROGRAM ACTIVITIES BUDGET
----------	----------	------------------------------	-----------------	---------------------	--------------	---------------------------

Program Plan Strategies

Strategy#1

Explain the need this strategy is addressing, evidence to support the strategies use and how the strategy will raise student achievement. In the explanation, describe the alignment of the activities, the strategy and the program goals.

OVERVIEW	LEA PLAN	PARENT AND FAMILY ENGAGEMENT	TITLE I PROGRAM	TITLE IA SET-ASIDES	PROGRAM PLAN	PROGRAM ACTIVITIES BUDGET
BUDGET OVERVIEW	BUDGET DATA IMPORT	SALARIES AND BENEFITS	PROFESSIONAL SERVICES	EQUIPMENT	SUPPLIES AND MATERIALS	
FIXED PROPERTY COSTS	OTHER OBJECTS	BUDGET SUMMARY				



The Schoolwide Program in the ConApp

Program Plan: Group of strategies to achieve the goals of the schoolwide program

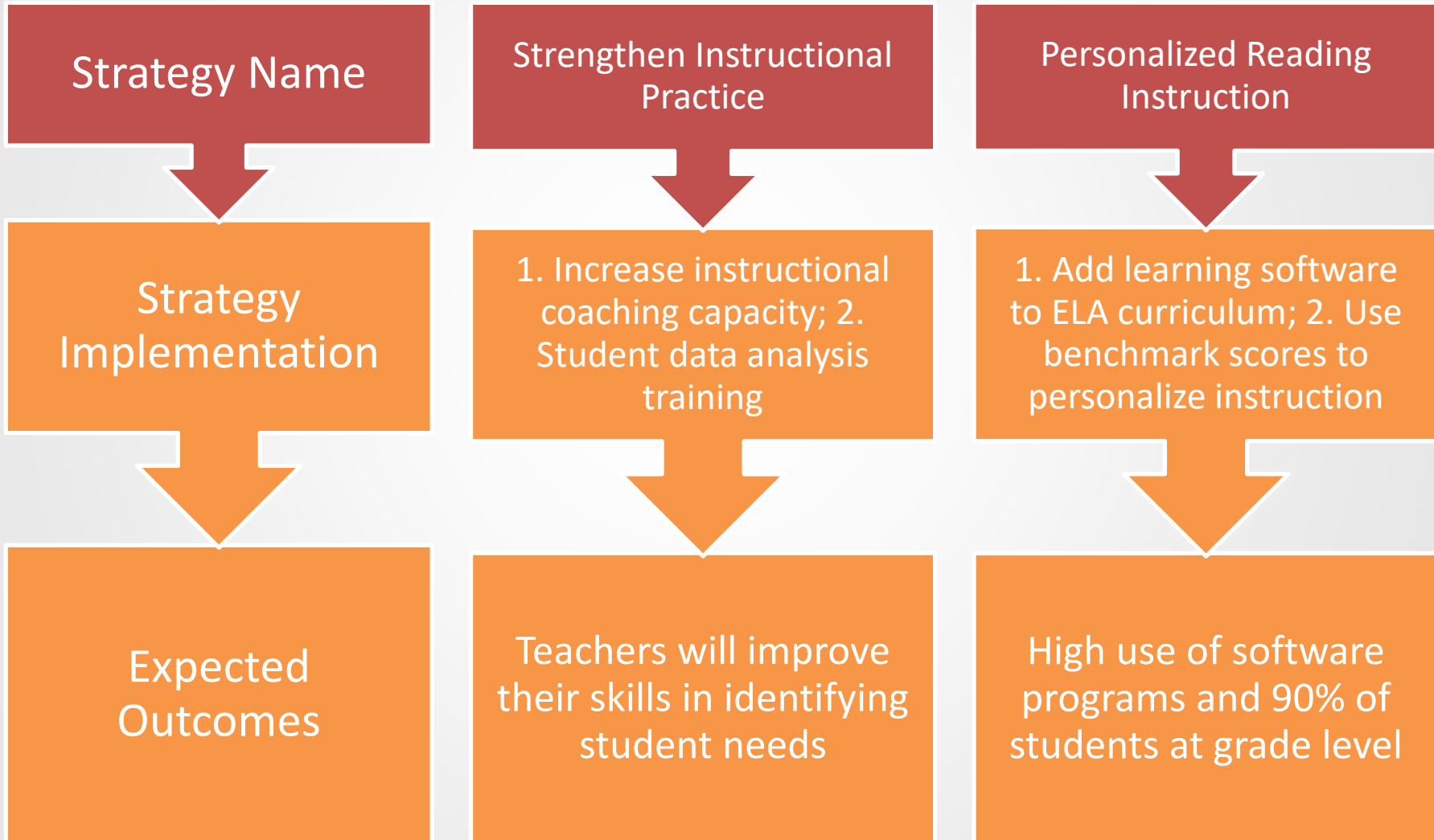


Strategies: Coordinated activities that have expected outcomes

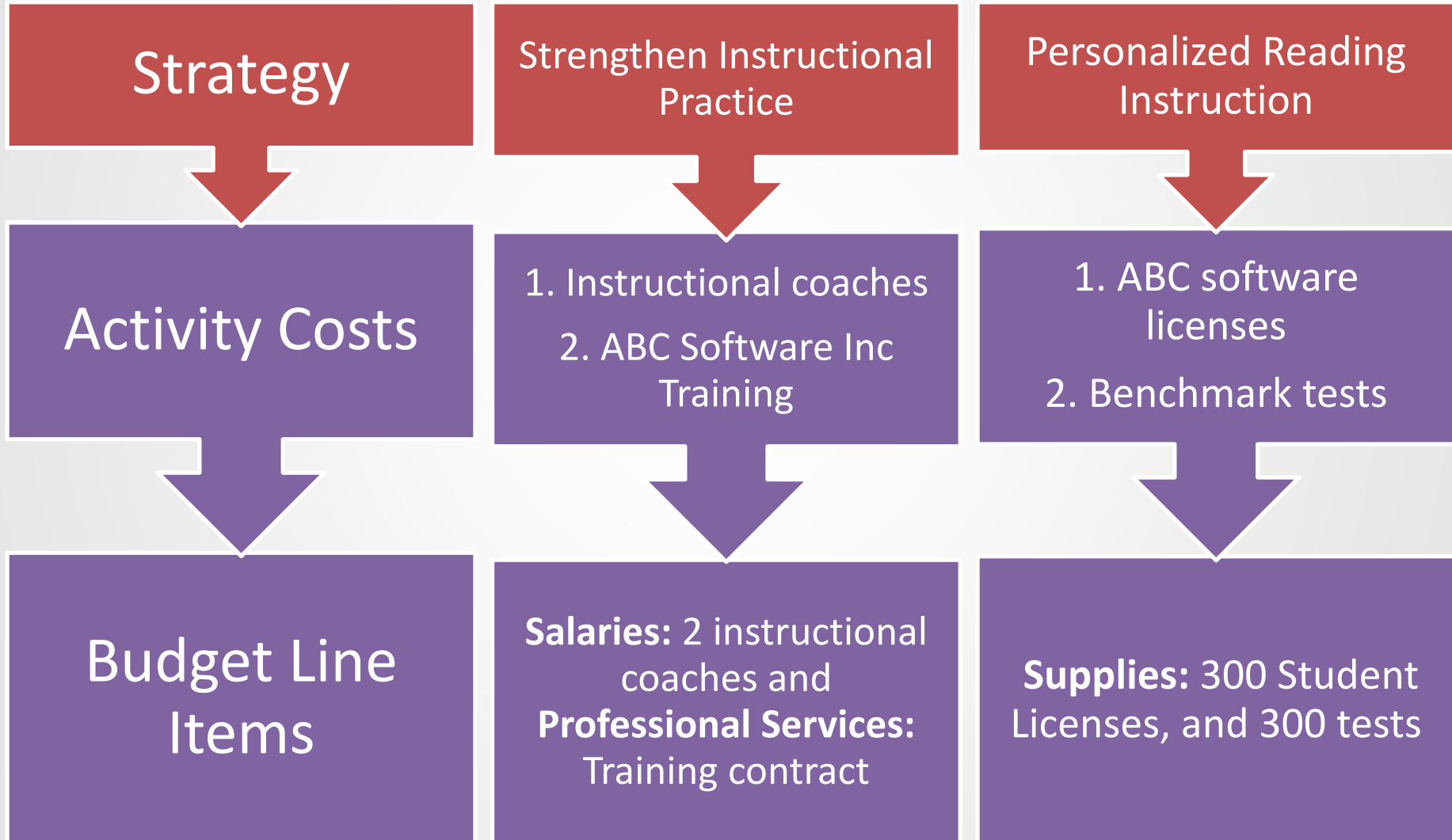


Budget: Specific costs associated with the performance of the activities

Example: Schoolwide Plan Strategies in the ConApp



Example: Schoolwide Plan Activities in the ConApp



Example Schoolwide Program – Unconsolidated Budget



Strengthen Instructional Practice

- Training Contract - \$45,000
- Instructional Coaches - \$110,000

Personalized Reading Instruction

- Student Licenses - \$25,000
- Benchmark Tests - \$20,000
- Preservice Week - \$25,000
- Mentor Teacher Program - \$25,000
- Family Engagement Program - \$10,000
- ESOL Training - \$5,000
- Social Worker - \$80,000
- Robotics Club- \$5,000

Example Consolidated Schoolwide Program Budget

TI \$200,000
TII \$50,000
TIII \$15,000
TIV \$85,000

TOTAL
\$350,000

Strengthen Instructional Practice

- Training Contract - \$45,000
- Instructional Coaches- \$130,000

Leadership Opportunities

- Mentor Teaching Program - \$30,000

Personalized Reading Instruction

- ABC Reading Licenses = \$25,000
- Benchmark Tests = \$20,000

Wraparound Supports

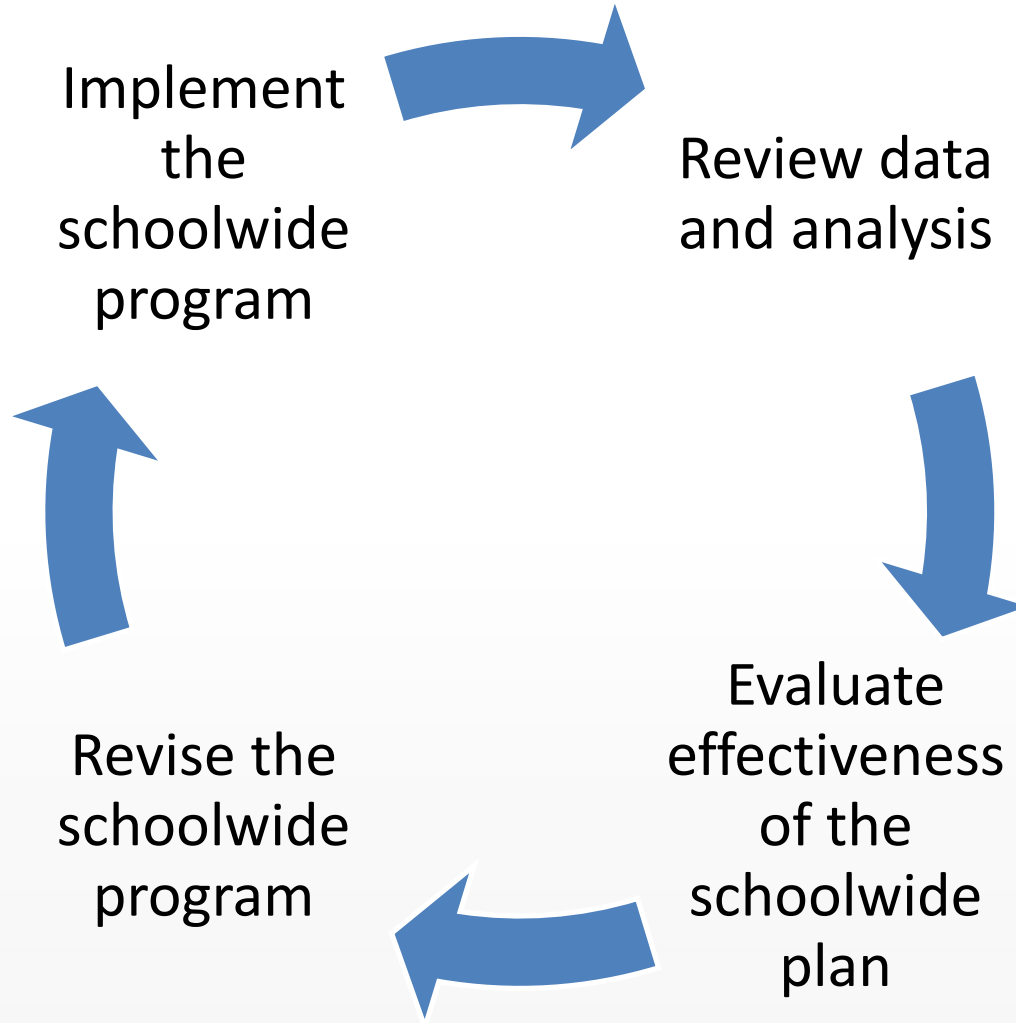
- Dean of Students = \$60,000
- Student Counseling = \$40,000



Evaluation and Revision



Schoolwide Program Continuous Improvement Process



Timeline



Core Elements of the Schoolwide Program Evaluation

Performed annually

Evaluates the implementation of, and the results achieved by the program

Uses data from the PARCC and other indicators of academic achievement

Determines the effectiveness of the program in increasing the achievement of students

Indicates if the schoolwide program plan should be revised

Annual Evaluation Methods

Examples **School profile updates** in a template developed by the LEA provide a framework for analysis

Process evaluations measure the effectiveness of the activities and the fidelity of the implementation of the plan

Impact evaluations determine if the program goals are being met by the plan strategies

Outcome evaluations determine if the program goals are being achieved



Next Steps and Resources



Next Steps

1. Determine if your school(s) are developing a new schoolwide program or evaluating and updating last year's schoolwide program
2. Determine who will be on the planning team
3. Collect school data, and stakeholder input on the program for the needs assessment or evaluation (as applicable)
4. Develop, or evaluate and update, the plan for the 202-23 school year
5. Use the checklist tool to ensure the plan has all required components
6. Collect documentation of the planning process

Resources

- OSSE Schoolwide Plan Template
- OSSE Schoolwide Program Plan Compliance Checklist
- [Elementary and Secondary Education Act of 1965](#)
- [CFR §200.26 Core Elements of a Schoolwide Program](#)
- [ESEANow.com](#)
- [Supporting School Reform by Leveraging Federal Funds in a Schoolwide Program](#) US Department of Education
- [ESSA Guidance for LEAs Webpage](#)
- [ESEA Consolidated Application Webpage](#)
- [Risk Based Monitoring Webpage](#)



ESEA Consolidated (Titles I-IV) Point of Contact

<p>Mark Harris Mark.Harris3@dc.gov (202) 741-0256</p>	<p>Alison Waddy Alison.Waddy@dc.gov (202) 727-8379</p>	<p>Mildred Washington Mildred.Washington@dc.gov (202) 724-7870</p>
<p>BASIS PCS Cedar Tree PCS DC Wildflower DCPS Friendship PCS Howard University Middle I Dream PCS IDEA PCS Kingsman Academy PCS Maya Angelou PCS Mundo Verde PCS Perry Street Prep PCS Richard Wright PCS Shining Stars Montessori Social Justice PCS St. Coletta PCS Washington Global Washington Latin</p>	<p>Achievement Prep PCS Breakthrough Montessori Capital City PCS Capitol Village PCS Center City PCS Cesar Chavez PCS Creative Minds DC Bilingual DC Prep DC Scholars Digital Pioneers E.L. Haynes PCS Global Citizens Inspired Teaching LAMB PCS Lee Montessori Meridian PCS Paul PCS Sela PCS Sojourner Truth PCS Washington Leadership Academy Washington Yu Ying PCS</p>	<p>Bridges PCS Children's Guild DC International Eagle Academy PCS Early Childhood Academy Girls Global Harmony Hope Community Ingenuity Prep PCS KIPP DC LEARN DC Mary McLeod Monument Rocketship SEED Statesman PCS E.W. Stokes PCS Thurgood Marshall PCS Two Rivers PCS</p>