

DC SCHOOL REPORT CARD

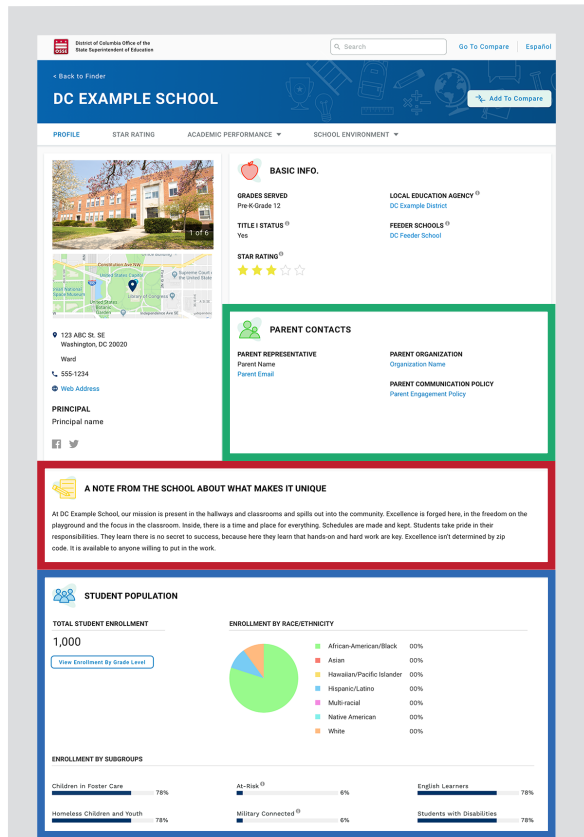
Get to know DC Schools. Start here.

The DC School Report Card, launching in December 2018, gives families a look into all public schools in the District. Built in partnership with parents and families, this tool will be a step toward a more transparent, equitable DC education system, with students at the center of critical decision-making.

The DC School Report Card includes over 150 elements, such as:

- Academic programs
- Closest public transportation routes
- Extracurricular options
- Parent organization information
- And much more.

The DC School Report Card will help you answer some of the most crucial questions about your child's school, and is a first step for parents and families looking to learn more about DC's public schools.



START HERE: Learn about your student's DC school on the School Profile page, pictured above.

Parent Organization: Easily accessible information about the school's parent organization.

Message from the School: A message written by the school which highlights how it approaches its work to serve students.

Student Population: Shares the school's overall enrollment and percentage of students by student group.



NAVIGATING THE DC SCHOOL REPORT CARD

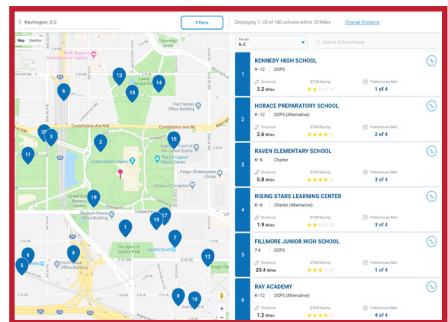
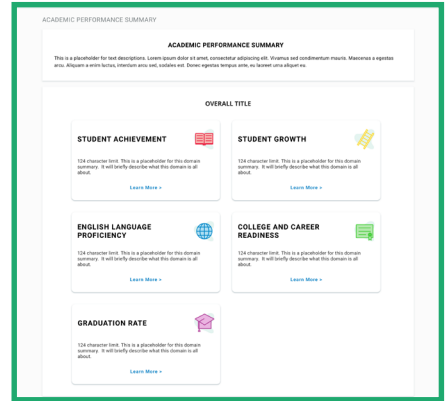
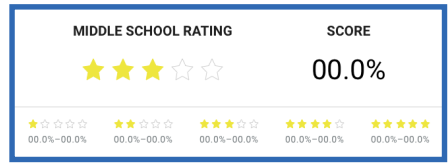
STAR Framework: Each school receives a rating from 1 to 5 stars on the School Transparency and Reporting (STAR) Framework, with 5 being the highest. The STAR Framework uses multiple measures to calculate a school's overall performance and weights those areas differently for Elementary, Middle, High, and Alternative Schools.

School Environment: Provides information about the school's attendance, including chronic absenteeism, re-enrollment, student mobility, safety and discipline, teaching and health staff, and early learning classroom environment.

Academic Performance: You can explore student achievement and growth on multiple measures, including PARCC, MSAA, English language proficiency, college readiness metrics, and graduation rates.

Mapping Tool: You can explore the report cards and information about schools by using a map and finder tool, which can identify schools with specific programs, grades, locations, and other user preferences. Additionally, you can sort and filter their view by the grades served, school programs, location, and performance.

Compare: You can view up to three schools at one time. Items are displayed side by side for the schools selected in this report card feature.

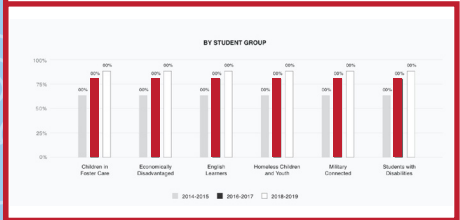


SCHOOL NAME 1 Grades Served 000 Students Enrolled	SCHOOL NAME 2 Grades Served 000 Students Enrolled	SCHOOL NAME 3 Grades Served 000 Students Enrolled
STAR RATING <div> <div>4 stars</div> <div>3 stars</div> <div>2 stars</div> </div>		
SCHOOL PROGRAM INFORMATION <div> <div>Advanced Placement</div> <div>Arts Integration</div> <div>Global Education</div> </div>		
BEFORE-SCHOOL CARE <div> <div>No</div> <div>Free</div> <div>Free</div> </div>		
AFTER-SCHOOL CARE <div> <div>Sliding Scale/Free</div> <div>Free</div> <div>Sliding Scale/Free</div> </div>		
PARENT ORGANIZATION <div> <div>Parent Organization Name</div> <div>This school does not have a parent organization.</div> <div>Parent Organization Name</div> </div>		
TEACHERS WITH 2+ YEARS EXPERIENCE <div> <div>00%</div> <div>00%</div> <div>00%</div> </div>		
TOTAL SUPERVISORS <div> <div>00 per 100 students</div> <div>00 per 100 students</div> <div>00 per 100 students</div> </div>		

WHAT TYPES OF QUESTIONS CAN THE DC SCHOOL REPORT CARD HELP ME ANSWER?

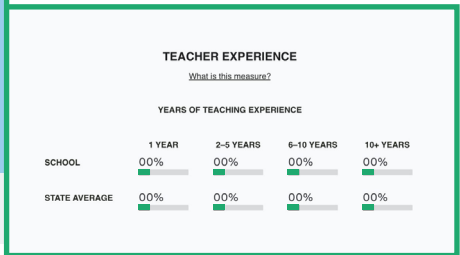
Below are just three examples of the many questions you can answer using the DC School Report Card.

How is the school performing?



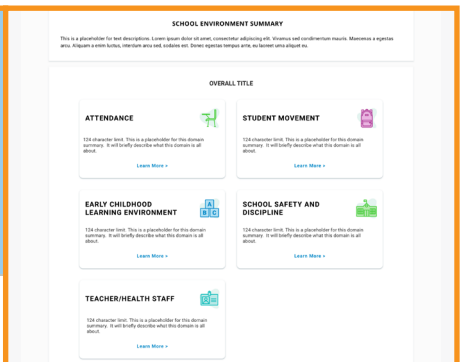
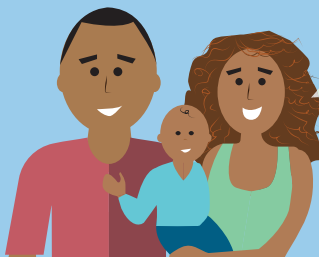
The DC School Report Card displays multiple elements that compare how the school is performing compared to schools that serve the same grade levels across the District.

How experienced are the teachers?



The DC School Report Card provides information about teacher experience and health staff availability.

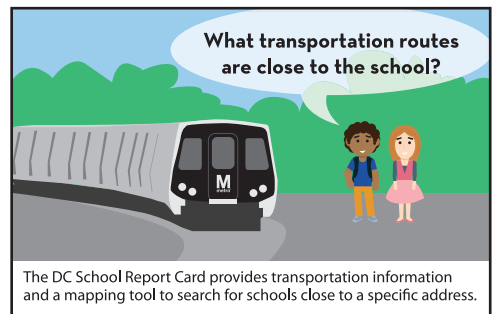
What can you tell me about the school's pre-kindergarten program?



The DC School Report Card includes information specifically about the early childhood learning environment at the school. It includes data assessing the effectiveness of student-teacher interactions to promote student development and learning as well as pre-K attendance.

WHAT TYPES OF QUESTIONS CAN THE DC SCHOOL REPORT CARD HELP ME ANSWER?

Below are two more examples of the types of questions you can answer using the DC School Report Card.



HOW DO I ACCESS THE DC SCHOOL REPORT CARD?

Visit dcschoolreportcard.org to learn more.

- On your mobile, tablet or computer
- Print summary overviews of each school
- Available in English and Spanish, with step-by-step user guide in five other languages frequently spoken in DC

Questions? Email us at DCSchoolReportCard@dc.gov.