



Early Access to Incoming Student Data: Tools for Schools

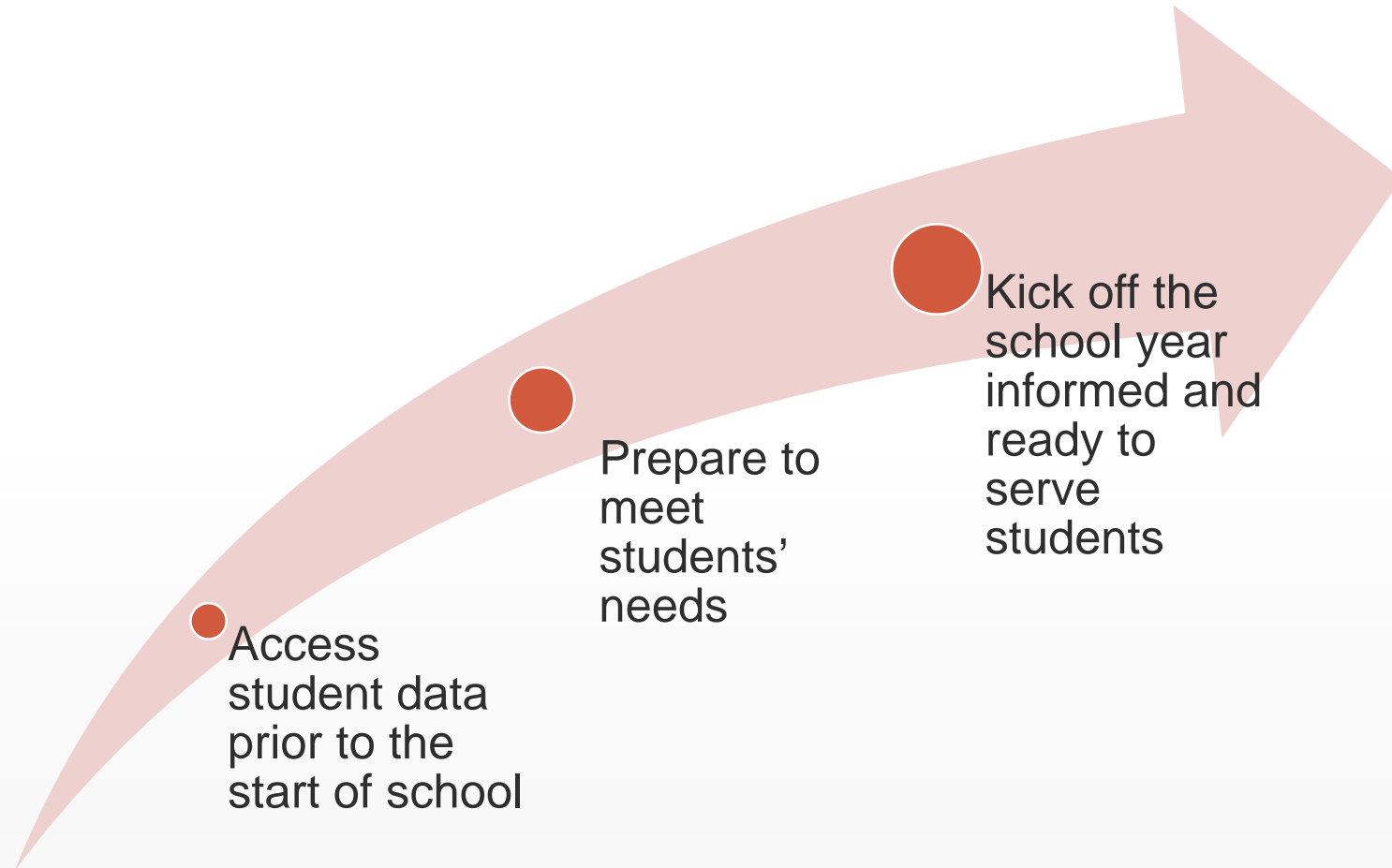
May 13, 2021

Session Objectives

By the end of this session, participants will:

- Have a high-level understanding of the **three existing Early Access to Student Data Qlik Applications** including their interplay and function.
- Understand the uses of these data apps and how the data can assist with the design and adaptation of interventions for incoming students – which will be important this coming fall (as appropriate).
- Learn about the 2021 Kid Talk event.
- Be introduced to the **new Early Access to Immunization Data Qlik Application**
- Know the person from their local education agency (LEA) who would be the appropriate point of contact(s) to use the data from each application.
- Be able to ask questions and gain clarity as needed.

Early Access to Student Data Supports LEAs' Planning for a Successful Start to the School Year.



2021-22 Early Access to Student Data Qlik Applications

OSSE has **three existing** and **one new** Early Access Qlik applications:

- 1) 2021-22 Early Access to Students with Disabilities (SWDs) Data**
 - Released Tuesday, April 27, 2021
- 2) 2021-22 Early Access to English Learners (ELs) Data**
 - Released Tuesday, April 27, 2021
- 3) 2021-22 High School Transition**
 - Released Tuesday, May 11, 2021
- 4) NEW! 2021-22 Early Access to Immunization Data**
 - Released Wednesday, May 12, 2021



SY21-22 Early Access
to SWD Data



SY21-22 High School
Transition



SY21-22 Early Access
to EL Data



SY21-22 Early Access
to Immunization Data

Data Privacy Reminders & Resources

- All Qlik apps contain sensitive student-level data.
- To obtain access to a Qlik app, a person must be listed in the [eSchoolPLUS Points of Contact List](#) under an authorized role type.
- While OSSE encourages LEA- and school-based teams to work together to prepare to serve incoming students, staff who have access to a Qlik app must ensure they are following **LEA policy and protocol** when sharing student-level data with their colleagues and teams.
- Additional resources for data privacy:
 - [OSSE and Federal Privacy Laws](#): How OSSE complies with key federal laws on student privacy and data.
 - US Department of Education [Protecting Student Privacy](#): Resources for school officials and FAQs.
 - Data Quality Campaign [A Stoplight for Student Data Use](#): Includes helpful FERPA decision tree graphic.

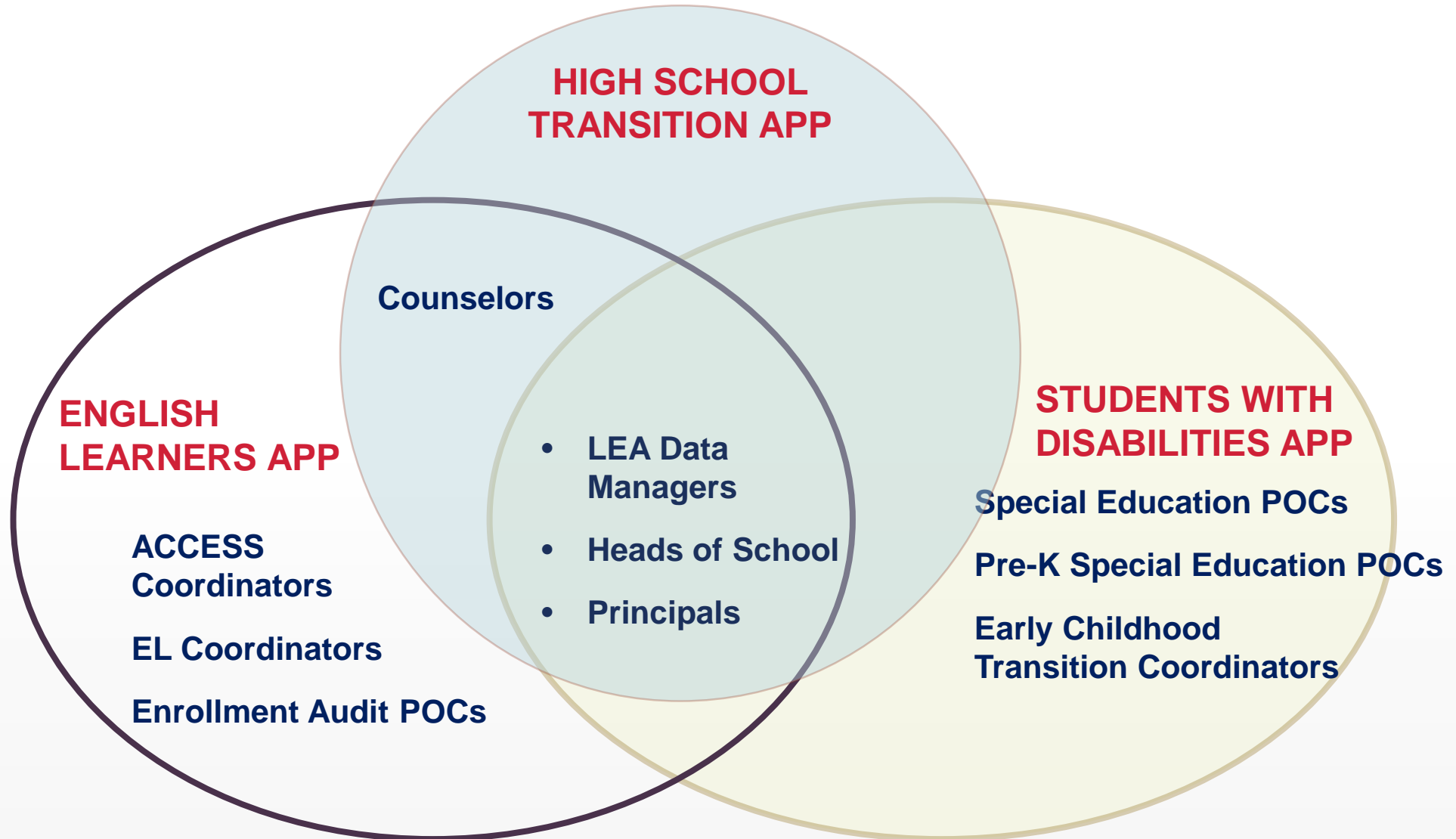


Early Access to Data for:

1. English Learners
2. Students with Disabilities
3. Students Transitioning in High School

Existing Qlik Applications Returning for 2021-22

Role-Based Access Across the Three Returning Qlik Apps



2021-22 Early Access to Students with Disabilities (SWDs) Data Qlik Application

Provides a preview of student-level data for SWDs:

- Eligibility and individualized education program (IEP) start and end dates
- Special education and related services details
- Dedicated aide and assistive technology needs
- Transportation information
- Indication of prior receipt of IDEA Part C services
- NEW for 2020-21: attendance information, and transportation eligibility for both the 2019-20 and 2020-21 school years

Targeted Users

- LEA Data Managers,
- Heads of School,
- Principals,
- Special Education POCs,
- Pre-K Special Education POCs, and
- Early Childhood Transition Coordinators

2021-22 Early Access to English Learners (ELs) Data Qlik App

Purpose:

- Provides a preview of student-level English Learner-related data for all the students pre-registered in the LEA.
- Allows LEAs to plan and prepare to serve the student population.
- Provides a preview of key student-level English Learner-related data that is critical for serving ELs effectively.

Data elements include:

- Current EL status
- Historic EL status
- Screener date
- Screener status ***new***: includes PEL and PNEL
- Screener score
- ACCESS composite score
- ACCESS domain scores
- ACCESS growth target
- Re-identification of a student as EL
- If the student was ever EL
- Historic ACCESS scores
- PARCC ELA and Math scores
- Attendance metrics ***new***

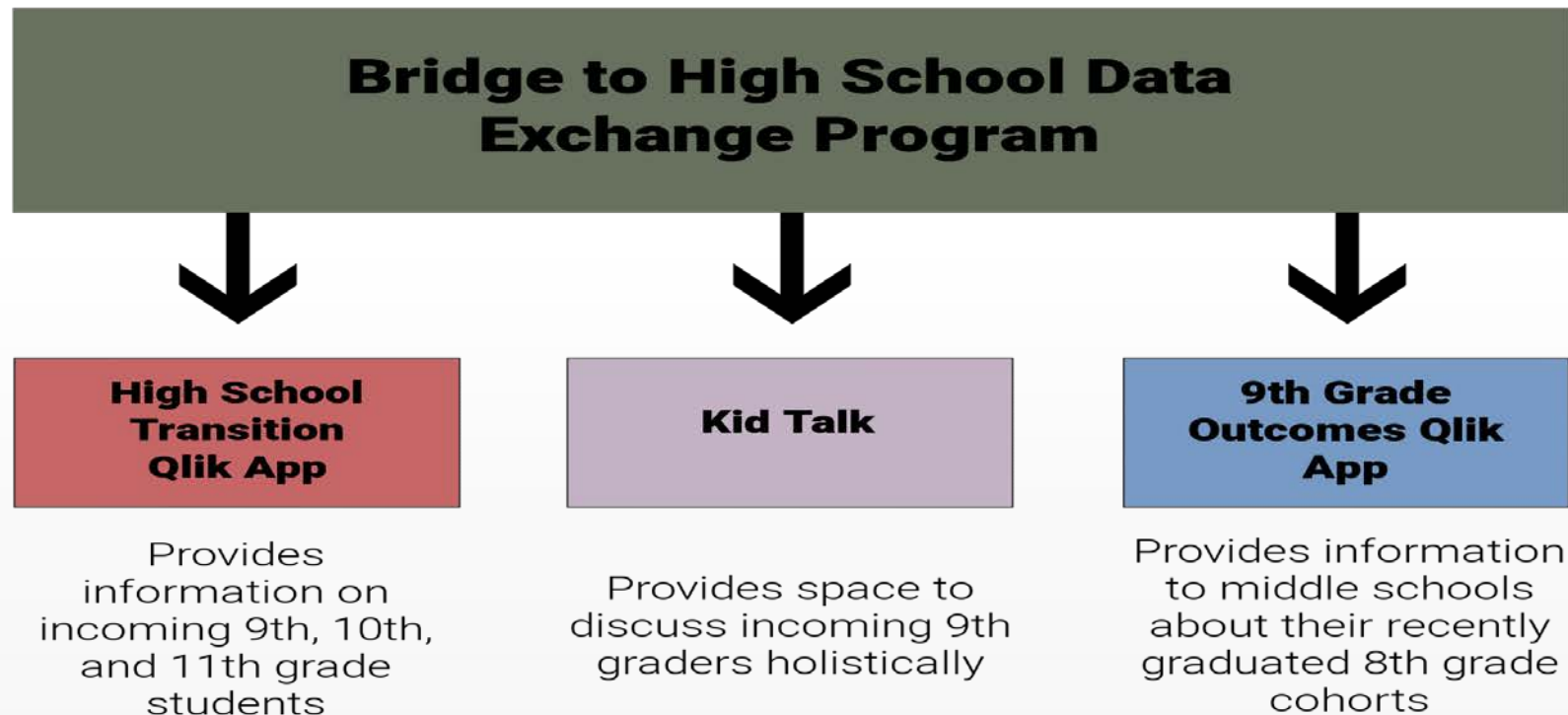
2021-22 Early Access to English Learners (ELs) Data Qlik App

Who has access to this app?

- All LEA Data Managers
- Heads of School
- Principals
- ACCESS for ELLs 2.0 Coordinators
- EL Coordinators
- Counselors
- Enrollment Audit POCs

Bridge to High School Data Exchange

Created by schools, for schools, the Bridge to High School Data Exchange equips educators with key student-level information and opportunities to connect with one another to better serve students transitioning to high school.



2021-22 High School Transition Qlik Application

Purpose: Provides participating high school LEAs a preview of student-level enrollment and outcome data to support their students prior to the first official day of school.

Targeted Users

- LEA Data Managers
- Heads of School
- Principals
- Counselors

Data Elements

- Student enrollment data for incoming ninth, 10th and 11th grade students
- Demographic data (Phase I)
- Attendance data (Phase I)
- Statewide assessment data (Phase I)
- Math and English course names and grades + schoolwide/benchmark assessment scores for eighth and ninth grades (Phase II)
- Yes/No flags for recommendations for academic and/or social emotional intervention for incoming ninth graders (Phase II)
- Phase II data to be released late-July/early-August 2021

Kid Talk

- In response to LEA feedback from Bridge to High School Data Exchange surveys, Raise DC and OSSE launched “Kid Talk” in August 2017.
- This year's date: **Wednesday, Sept. 22, 2021**
- The Kid Talk offers representatives from middle schools and high schools an opportunity to connect in-person to:
 - Review eighth grade data and offer insights to guide student-specific planning for new ninth graders.
 - Launch ongoing working relationships between middle and high schools to continue to support shared students throughout their freshman year.
 - Discuss relevant transition data in school teams consisting of counselors, school leaders, EL POCs, SWD POCs, etc.
 - Interested in joining us for Kid Talk? Fill out this form: forms.gle/Ki797q2BASLW9yvq8





Practitioner Panel

Practitioners in the Field

Promising Practices

- In your roles, when do you find these applications (and Kid Talk, if applicable) most helpful, and what kinds of insights do they highlight (i.e., consider school and student resource planning)?

Practitioners in the Field

Roadblocks and Common Challenges

- What barriers to using this information have you been able to overcome in the past? How did you do it?

Practitioners in the Field

Building Buy-In and Systematizing Practices

- Any thoughts on how today's participants can maximize the use of the data from these applications?
- From your previous participation in Kid Talk, what have been your most valuable conversations and why?

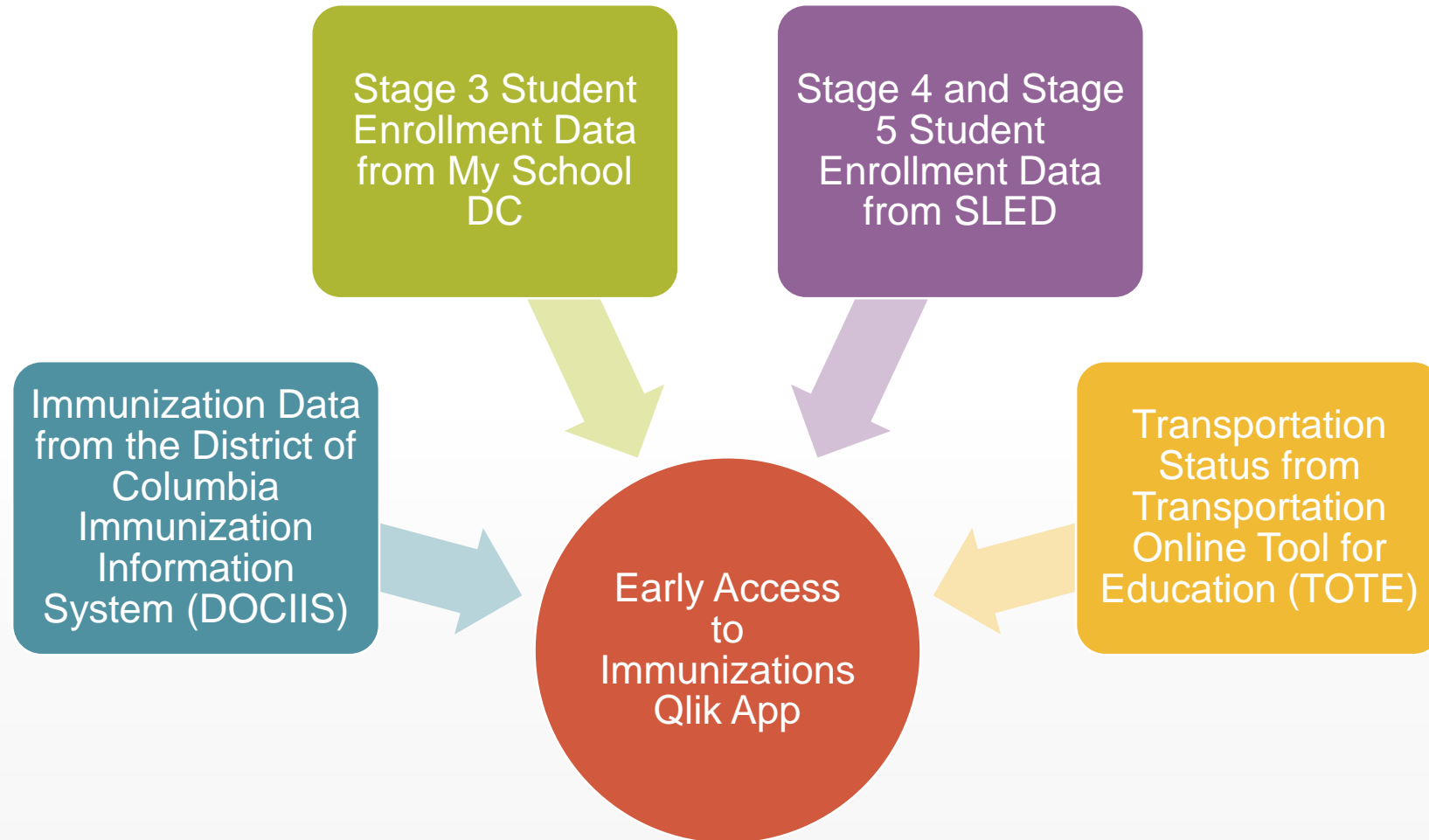


Early Access to Immunization Data

New Qlik Application for 2021-22

OSSE Division of Health & Wellness

2021-22 Early Access to Immunizations Qlik App



2021-22 Early Access to Immunizations Data Elements

School and LEA-Level Data

- Students in Compliance (number and percent)
- Students Out of Compliance (number)
- Student Count by Grade
- Student Count by School
- Student Count by Returning and New Students

Student-Level Data

- Current LEA Code
- Current LEA Name
- Current School Code
- Current School Name
- Enrollment Stage
- USI
- First Name
- Last Name
- Date of Birth
- Gender
- Race
- Ethnicity
- Grade
- Compliant
- Overdue
- Due
- Transportation
- Military Status
- Homeless Status
- Returning Student
- New Student
- Sending LEA Code
- Sending LEA Name
- Sending School Code
- Sending School Name
- Educational Status 2020-21

2021-22 Early Access to Immunizations App

Purpose

- Supports schools with adhering to District law and regulations that require all students to be fully immunized as part of school enrollment and attendance.
- Provides a preview of student-level immunization data for students who have enrolled for the next school year.
- Allows schools to conduct outreach efforts throughout the spring and summer to ensure students are up-to-date on all required pediatric immunizations before the start of school.

Targeted Users

- LEA Data Managers
- LEA Health POCs
- Heads of School
- Principals
- School Immunization POCs



Wrap Up & Resources for Using Early Access Applications

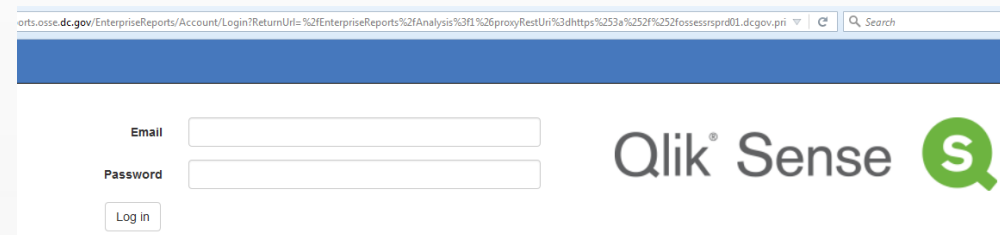
Early Access to Student Data Qlik Applications

There are multiple ways to access Qlik. Two common ways are:

1. Go to sled.osse.dc.gov/ and click on the Reports tab. Click the **OSSE Analysis Tool** option; or



2. Go directly to: <https://analysis.osse.dc.gov>



Next Steps

- Ensure the appropriate POC is aware of and has access to the appropriate Early Access to Student Data Qlik application.
- Make sure the application POC views the follow-up webinar for the appropriate early access application. Follow-up email forthcoming with links for the webinars!
- Stay tuned for information from Janae Eason (Janae.Eason@dc.gov) on how to attend Kid Talk in September
- Start thinking about who will be a part of your Kid Talk team.
- Reach out to the following early access to student data application manager if you have any questions or concerns:
 - High School Transitions: Janae Eason at Janae.Eason@dc.gov
 - Early Access to ELs Data: Jennifer Norton at Jennifer.Norton@dc.gov
 - Early Access to SWDs Data: Christie Weaver-Harris at Christie.Weaver-Harris@dc.gov
 - Early Access to Immunizations Data: Kyle Flood at Kyle.Flood@dc.gov

Additional Trainings & Support

Early Access to Immunization Data Qlik App	Early Access to English Learner (EL) Data Qlik App
<p>How to Navigate the App:</p> <ul style="list-style-type: none"> • Live training Tuesday, May 18, 2021, 2-3 p.m. • Repeated Thursday, May 20, 2021, 10-11 a.m. • Training is for LEA Data Managers, Health POCs, Immunization POCs, Heads of School, Principals. <p>Immunization Policy Training for SY21-22</p> <ul style="list-style-type: none"> • New recording coming soon 	<ul style="list-style-type: none"> ▪ How to Navigate the EL App: Pre-recorded Training ▪ Office Hours: As part of Office Hours with the Office of Multilingual Education. Thursdays from 11 a.m.-12 p.m. on June 24, July 22, and Aug. 19, 2021. RSVP to Jennifer.Norton@dc.gov.
High School Transition Qlik App	Early Access to Students with Disabilities (SWD) Data Qlik App
<ul style="list-style-type: none"> • How to Navigate the HS Transition App: Pre-recorded Training • Office Hours: Tuesday, May 18 & 25, 2021, 4-5 p.m. RSVP to Janae.Eason@dc.gov 	<ul style="list-style-type: none"> • How to Navigate the SWD App: Pre-recorded Training • Office Hours: Wednesday, June 16, 2021, 3-4 p.m. RSVP to Christie.Weaver-Harris@dc.gov



All live trainings will be recorded and posted, along with pre-recorded trainings, on the OSSE website Start of School page.

OSSE Multilingual Learner Conference Registration is Open!

This virtual conference will feature educators sharing their programs and practices for English learners and multilingual learners in both English language and dual language programs. This convening is geared toward **all DC educators who work with students who are English learners in in-person, distance learning, and hybrid learning environments.**

Register now by visiting the conference website bit.ly/OSSEMLC

Questions? Contact Santiago Sanchez at Santiago.Sanchez@dc.gov

The poster features a central graphic of five stylized human figures in red and blue, arranged in a circle with their arms raised. The background is a light yellow with repeating text in various languages: 'HELLO', 'BONJOUR', 'xin chào', '你好', '안녕하세요', 'שלום', and 'HOLA'. Below the graphic, the text reads: 'OSSE Multilingual Learner Conference', 'STRENGTHENING TEACHING PRACTICES FOR MULTILINGUAL LEARNERS TOGETHER', '2-DAY VIRTUAL CONFERENCE!', and 'May 25-26, 2021 | 2:30-4 p.m.'. At the bottom, there are logos for OSSE and the Government of the District of Columbia, along with the name 'MURIEL BOWSER, MAYOR'.



Q&A
