



Early Access to Incoming Student Data: *Tools for Schools*

May 12, 2020

Christina Beal (OSSE)

Janae Eason (OSSE)

Jennifer Carpenter (OSSE)

Jennifer Norton (OSSE)

Annette Thacker-Bartlett (OSSE)

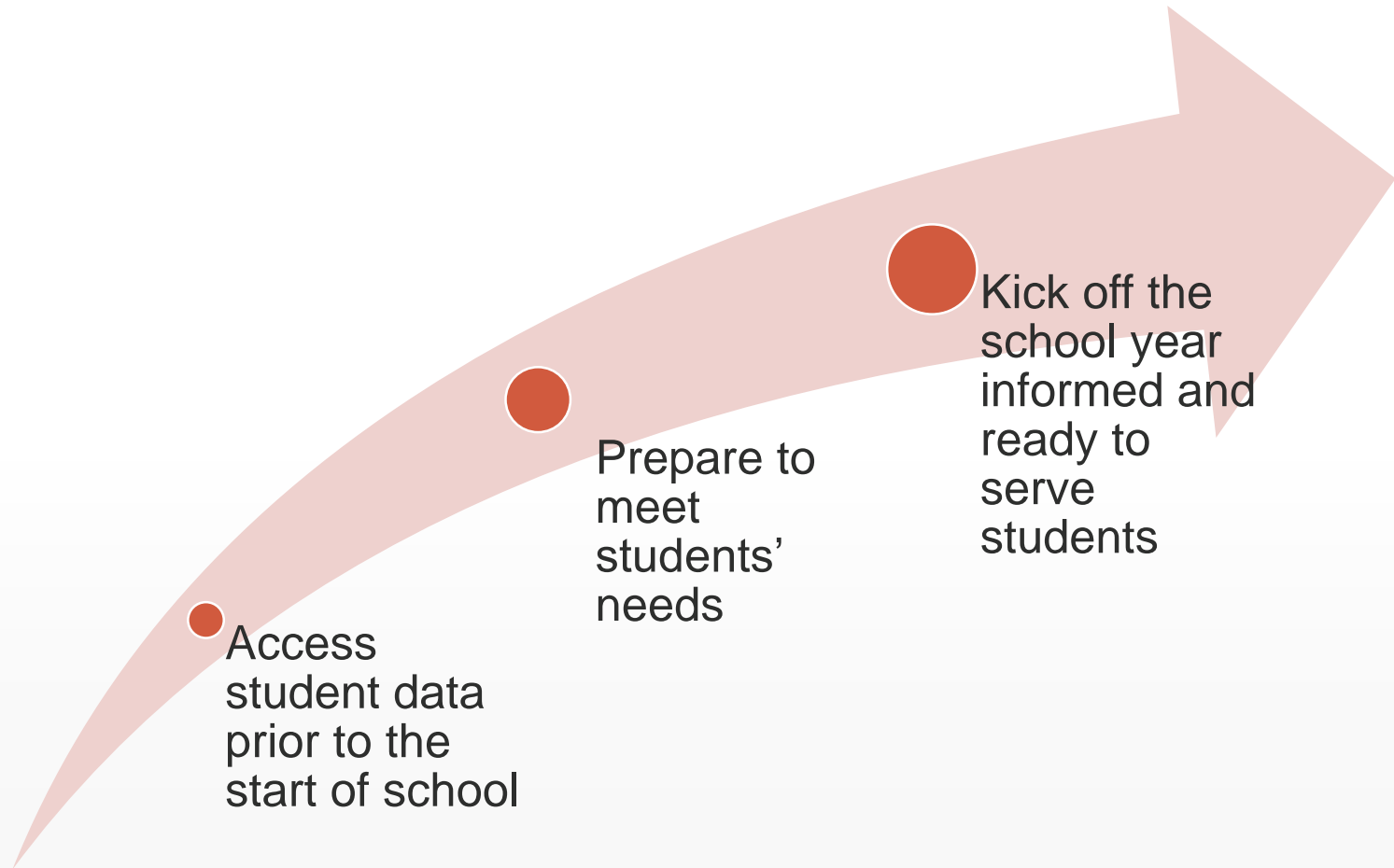
Amy Dudas (Raise DC/9th Grade Counts Network)

Session Objectives

By the end of this session, participants will:

- Have a high-level understanding of the three Early Access to Student Data Qlik Applications including their interplay and function.
- Understand the uses of these data systems and how the data can assist with the design and adaptation of interventions for incoming students – which will be more important than ever this coming fall.
- Be introduced to the Kid Talk event
- Know the person from their local education agency (LEA) who would be the appropriate point of contact(s) to use the data from each application
- Be able to ask questions and gain clarity as needed

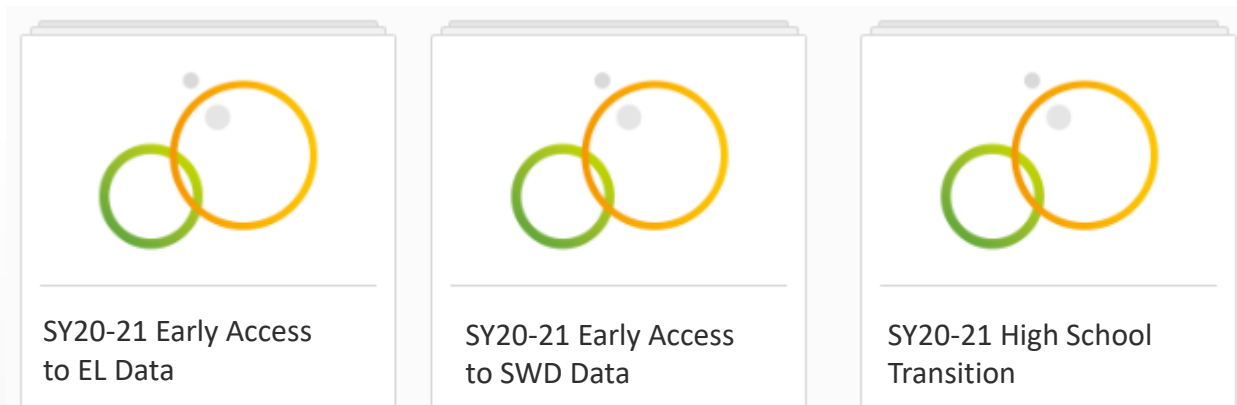
Early Access to Student Data Supports LEAs' Planning for a Successful Start to the School Year.



Early Access to Student Data Qlik Applications

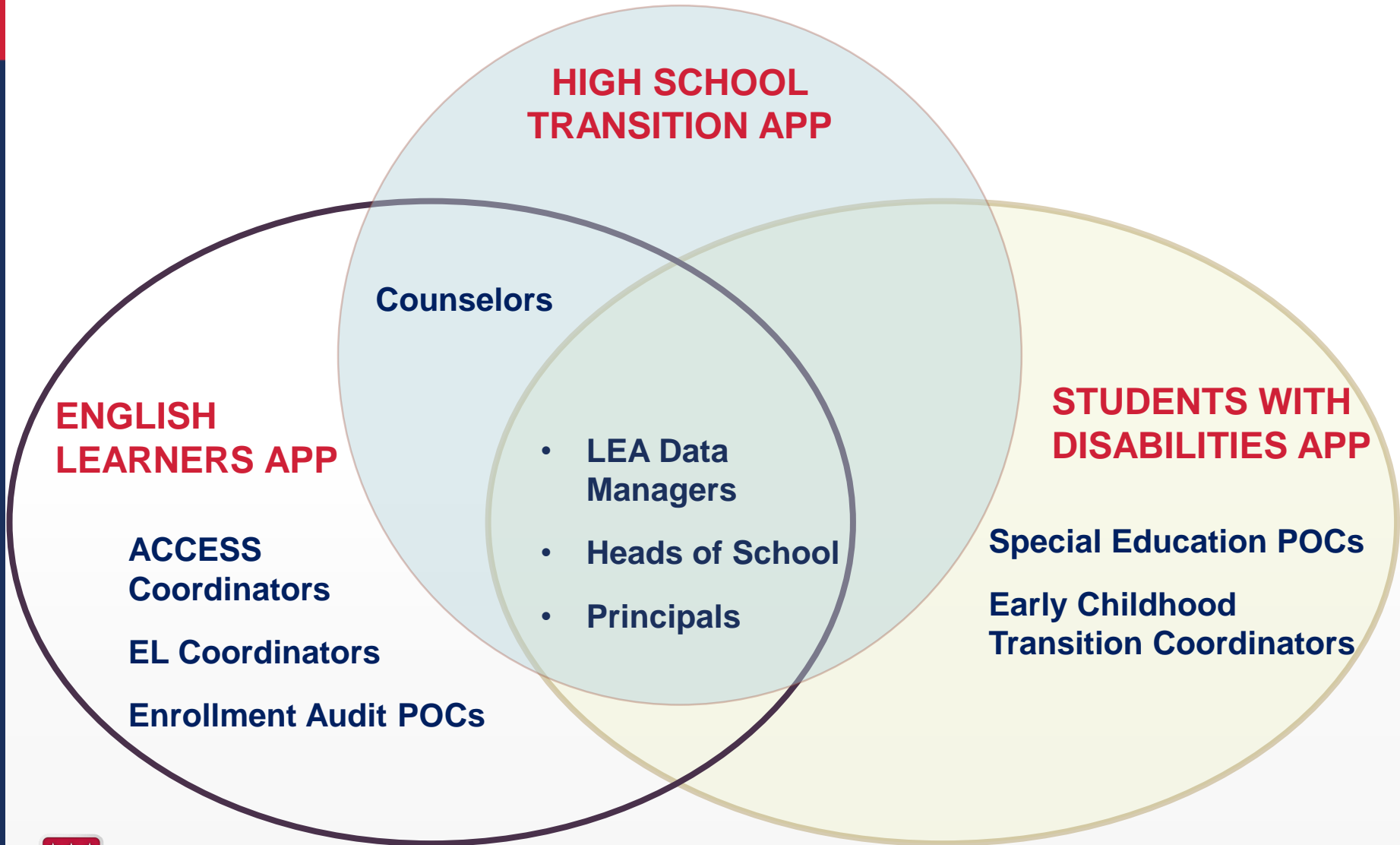
OSSE has created **three** Early Access Qlik applications:

- 2020-21 Early Access to Students with Disabilities (SWDs) Data
- 2020-21 Early Access to English Learners (ELs) Data
- 2020-21 High School Transition



- Applications were released on Tuesday, April 28, 2020

Role-Based Access Across the Three Apps



Data Privacy Reminders & Resources

- All three Qlik apps contain sensitive student-level data.
- To obtain access to a Qlik app, a person must be listed in the [eSchoolPLUS Points of Contact List](#) under an authorized role type.
- While OSSE encourages LEA- and school-based teams to work together to prepare to serve incoming students, staff who have access to a Qlik app must ensure they are following **LEA policy and protocol** when sharing student-level data with their colleagues and teams.
- Additional resources for data privacy:
 - [OSSE and Federal Privacy Laws](#): How OSSE complies with key federal laws on student privacy and data.
 - U.S. Department of Education [Protecting Student Privacy](#): Resources for school officials and FAQs.
 - Data Quality Campaign [A Stoplight for Student Data Use](#): Includes helpful FERPA decision tree graphic.

2020-21 Early Access to Students with Disabilities (SWDs) Data Qlik Application

- The Early Access to SWD Qlik application provides a preview of student-level data for SWD, including:
 - Eligibility and individualized education program (IEP) start and end dates
 - Special education and related services details
 - Dedicated aide and assistive technology needs
 - Transportation information
 - Indication of prior receipt of IDEA Part C services
- Targeted Users
 - LEA Data Managers,
 - Heads of School,
 - Principals,
 - Special Education POCs, and
 - Early Childhood Transition Coordinators

2020-21 Early Access to English Learners (ELs) Data Qlik Application

- The purpose of the Early Access to EL Qlik application is to provide a preview of student-level English Learner-related data for all the students pre-registered in the LEA. This application allows LEAs to plan and prepare to serve the student population.
- The Early Access to ELs Qlik application provides a preview of key student-level English Learner-related data that is critical for serving ELs effectively, including:
 - Current EL status
 - Historic EL status
 - Screener date ***new***
 - ACCESS composite score
 - ACCESS domain scores
 - ACCESS growth target
 - Re-identification of a student as EL
 - If the student was ever EL
 - All historic ACCESS scores ***new***
 - PARCC ELA and Math scores ***new***

2020-21 Early Access to English Learners (ELs) Data Qlik Application

- Access to this application is available to:
 - All LEA Data Managers
 - Heads of School
 - Principals
 - ACCESS for ELLs 2.0 Coordinators
 - EL Coordinators
 - Counselors *new*
 - Enrollment Audit POCs *new*

Bridge to High School Data Exchange

- Created by schools, for schools, the Bridge to High School Data Exchange equips educators with key student-level information and opportunities to connect with one another to better serve students transitioning to high school.

High School Transition
Qlik Application

Kid Talk

9th Grade Outcomes
Qlik Application

2020-21 High School Transition Qlik Application

- The High School Transition Qlik application provides participating high school LEAs a preview of student-level enrollment and outcome data to support their students prior to the first official day of school, including:
 - Student enrollment data for incoming ninth, 10th and 11th grade students
 - Demographic data
 - Attendance data
 - Statewide assessment data
 - Math and English course names and grades for eighth and ninth grades
 - Yes/No flags for recommendations for academic and/or social emotional intervention for incoming ninth graders *new*
- Targeted Users:
 - LEA Data Managers
 - Heads of School
 - Principals
 - Counselors
- Release of math and English course names and grades and relevant scores in the application: Aug. 4, 2020

Kid Talk

- In response to LEA feedback from Bridge to High School Data Exchange surveys, Raise DC and OSSE launched “Kid Talk” in August 2017.
- The Kid Talk offers representatives from middle schools and high schools an opportunity to connect in-person to:
 - Review eighth grade data and offer insights to guide student-specific planning for rising ninth graders.
 - Launch ongoing working relationships between middle and high schools to continue to support shared students throughout their freshman year.
 - In school teams of counselors, school leaders, EL POCs, SWD POCs, etc., discuss relevant transition data *new*
 - Interested in joining us for Kid Talk, fill out this form:
https://docs.google.com/forms/d/e/1FAIpQLSfnvk5laXAMVW5F68QEICWGGNn8PHIQxEJBrGhdIChdTnVqrg/viewform?usp=sf_link

Audience Polls !

1. Which apps have you used before (select all that apply)
 - High School Transition
 - Early Access to EL Data
 - Early Access to SWD data
 - None
2. What are key benefits to having early access to this data?
 - Creating a schedule for EL and SWD services
 - Planning staffing
 - Setting initial language and academic goals
 - Determining additional information needed

Hear from Practitioners!

- Promising Practices
 - In your roles, when do you find these applications most helpful, and what kinds of insights do they highlight?
 - Can you talk a bit about how the applications (and Kid Talk, if applicable) enhance your school and student resource planning?

Hear from Practitioners!

- Roadblocks and Common Challenges
 - What barriers to using this information have you been able to overcome in the past? How did you do it?

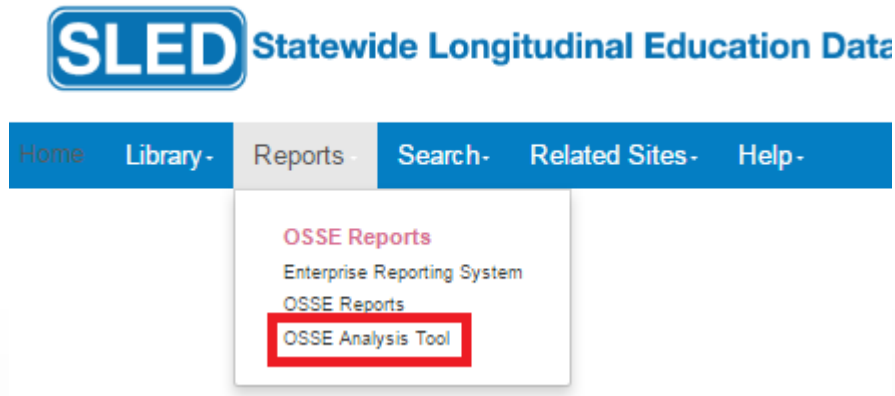
Hear from Practitioners!

- Building Buy-In and Systematizing Practices
 - How have you engaged your teams in applying insights from the use of these applications and Kid Talk (if applicable)?
 - Any thoughts on how today's participants can maximize the use of the data from these applications?
 - From your previous participation in Kid Talk, what have been your most valuable conversations and why?

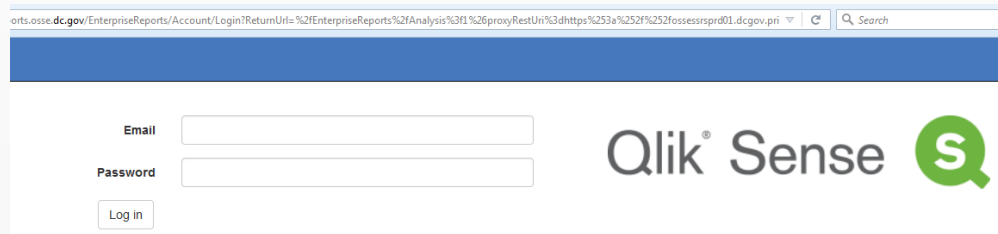
Early Access to Student Data Qlik Applications

There are multiple ways to access Qlik. Two common ways are:

1. Go to <https://sled.osse.dc.gov/> and click on the Reports tab. Click the **OSSE Analysis Tool** option; or



2. Go directly to: <https://analysis.osse.dc.gov>



Next Steps

- Ensure the appropriate POC is aware of and has access to the appropriate Early Access to Student Data Qlik application.
- Make sure the application POC views the follow-up webinar for the appropriate early access application. Follow-up email forthcoming with links for the webinars!
- Stay tuned for information from Janae Eason (Janae.Eason@dc.gov) on how to attend Kid Talk in August!
- Start thinking about who will be a part of your Kid Talk team.
- Reach out to Annette Thacker-Bartlett at Annette.Thacker@dc.gov if you have any questions or concerns and/or to direct you to the appropriate early access to student data application manager.



Q&A

FIND US

ADDRESS:

1050 First St. NE,
Washington, DC 20002

EMAIL:

Annette.Thacker@dc.gov

GET SOCIAL

 facebook.com/ossedc

 twitter.com/ossedc

 youtube.com/DCEducation

 www.osse.dc.gov