



ESSER Annual Reporting Webinar

Phase I Data Collection

February 16, 2023

Agenda for Today's Presentation

- Review timeline of Elementary and Secondary School Emergency Relief Fund (ESSER) Annual Reporting for fiscal year 2022 (FY22) from Oct. 1, 2021-Sept. 30, 2022.
- Walk through Phase I ESSER data collection requirements.
- Provide instructions for how to fill out and submit the Phase I data collection template to the Integrated Data Submission (IDS) portal.

Background: ESSER Recovery Funding

\$540 million

total funding available to LEAs through

ESSER I-CARES

ESSER II-CRRSA

ESSER III-ARP

As a condition of receiving ESSER funds, the Office of the State Superintendent of Education (OSSE) and local education agencies (LEAs) are required to complete annual reporting to the US Department of Education (USED).

Note: This webinar is focused on reporting for LEAs that received ESSER I, II, or III funds during FY22 (Oct. 1, 2021-Sept. 30, 2022).

ESSER Recovery Funding Reporting Timeline

	We are here			
January 2023	February 2023	March 2023	April 2023	April– Early May 2023
Organizing and Preparing	Submission to OSSE Collection Tool (2 phases)			USED Final Deadline
USED releases reporting form	Phase I data collection OSSE opens collection portal ESSER LEAs submit Phase I data	Phase II data collection ESSER LEAs submit Phase II data OSSE reviews and works with LEAs to resolve data issues	LEA Leader certifies Phase I & II data in the collection portal OSSE reviews submitted data and conducts quality assurance reviews	OSSE populates final USED templates OSSE submits ESSER reporting to USED



ESSER Recovery Funding Reporting Process

Phase I: February - March

Series of true/false questions on spending decisions and one narrative on evidence-based interventions

Feb. 16-20: Tools & Resources Published

- Webinars to review data required for the Phase I collection. Register [here](#).
- User guide for Phase I collection posted on [ESSER recovery funding website](#)
- [IDS portal](#) opens for LEAs on Feb. 20

March 7: Data Due to OSSE

- Deadline for LEAs to upload completed templates into the IDS Portal

Phase II: March

Detailed expenditure data by spending activity (e.g., health and safety, student academic needs) and by cost type (e.g., personnel, supplies)

March 2-7: Tools & Resources Published

- Webinars on to review data required for Phase II collection. Register [here](#).
- User guide for Phase II collection posted on [ESSER recovery funding website](#)
- [IDS portal](#) opens for LEAs on Mar 7

March 21: Data Due to OSSE

- Deadline for LEAs to upload completed templates into the IDS Portal

ESSER Recovery Funding Phase I Reporting Process

Action	Location	Estimated Time
Log into IDS portal and download the template	IDS Portal	< 2 minutes
Download the instructional guide	OSSE Recovery Funding Website	< 2 minutes
Complete the reporting template	Spreadsheet downloaded from IDS Portal	~2 hours
Submit completed template	IDS Portal	5-15 minutes <i>(if errors are found, this step may require corrections to the spreadsheet)</i>

ESSER Recovery Funding Phase I Reporting

TODAY: LEAs will understand Phase I ESSER data collection requirements

Safe In-Person Instruction

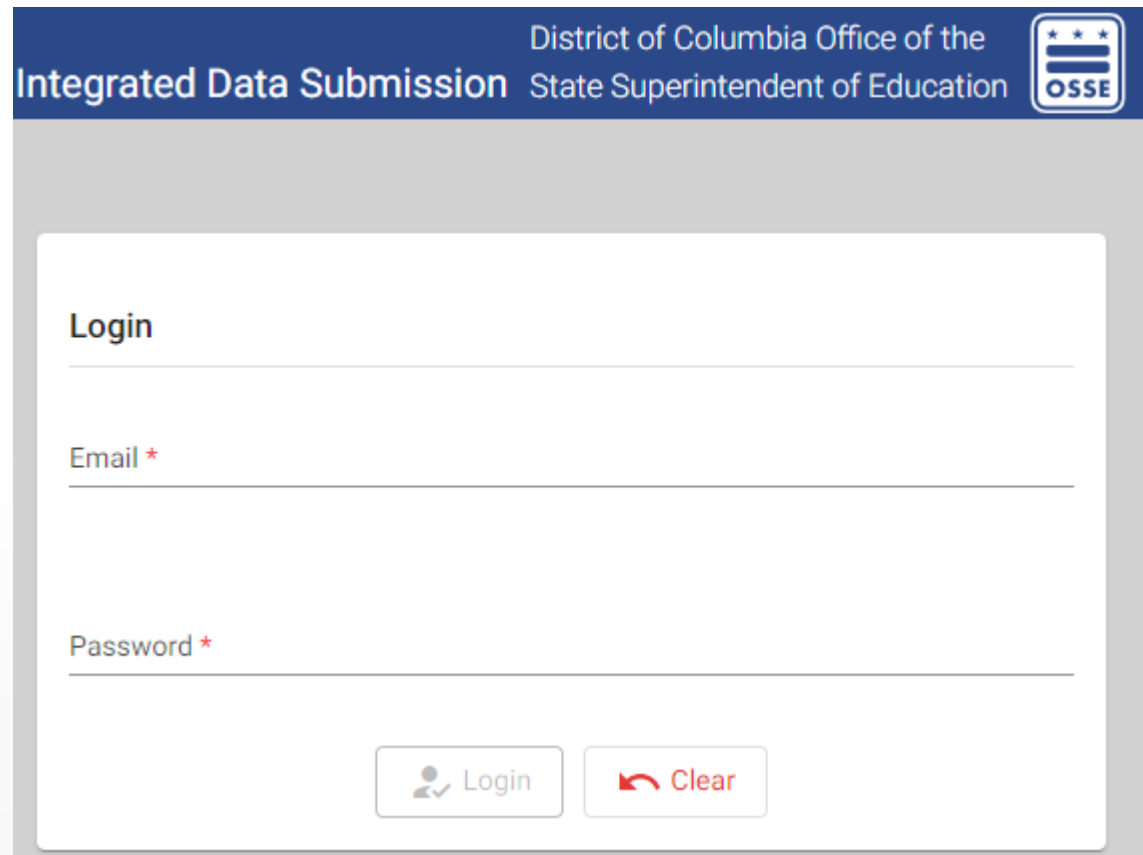
Provide Internet Access


Reengaging Students

Allocation of ESSER Resources

ARP ESSER Mandatory Requirement

Log in to the IDS Portal





District of Columbia Office of the
Integrated Data Submission State Superintendent of Education 

Login

Email *

Password *

 Login  Clear

Your IDS credentials were emailed to you by OSSE if you are registered as an LEA Finance/Grant Manager in the [IDS All Staff Application](#).

If you do not have credentials, please email OSSE.ESSER@dc.gov for support.

Download the ESSER Reporting Template

Entity: LEA 1 | Collection: [dropdown] | Clear Filters

Collection	Due Date	Last Upload Status	Last Uploaded By	Last Uploaded DateTime	Total Records	Failed Records	Actions
ESSER	3/7/2023						Upload Download

Items per page: 5 | 1 - 1 of 1

1. Locate the *Download* button in the **ESSER FY22 Phase 1** collection row and click it.
2. Select *Template*. The **ESSER FY22 Phase 1** Template workbook will download to your computer.

Actions

[Upload](#) [Download](#)

Items per page: 5 | **Template** | 1 - 1 of 1



Access the Instructional Guide

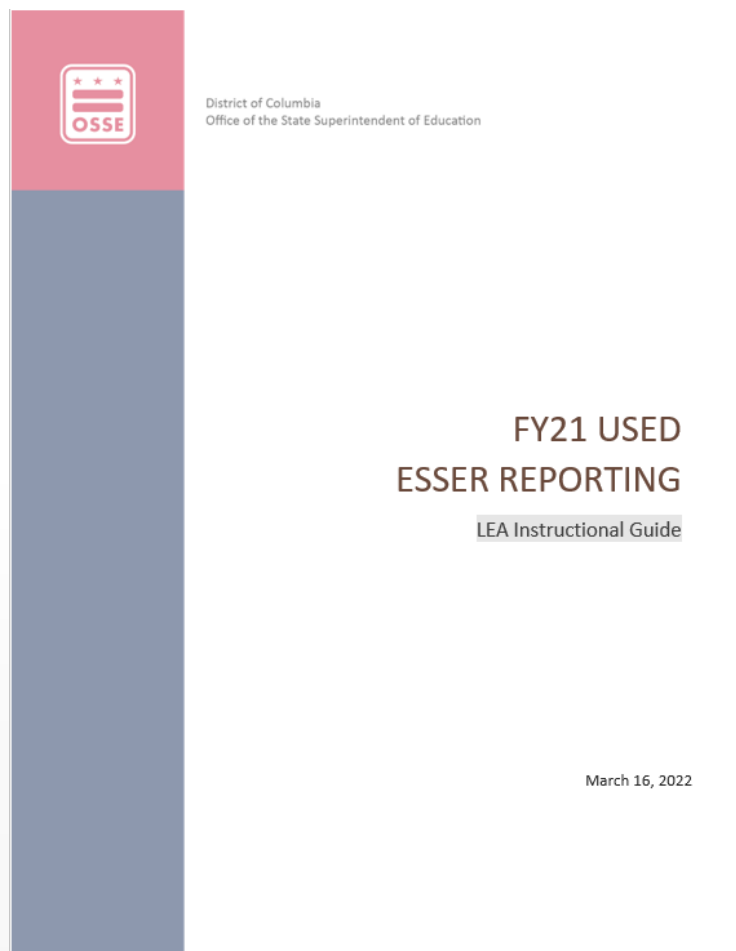


Table of Contents

Overview.....	1
Support.....	1
Using the Application.....	2
Logging In.....	2
Getting Started.....	2
Downloading the Template.....	3
Completing the Template.....	4
Safe In-Person Instruction.....	4
Provide Internet Access.....	4
Reengaging Students.....	6
Allocation of ESSER Resources.....	6
ARP ESSER Mandatory Requirement.....	7
Uploading the Data.....	8
Resolving Errors.....	8
Viewing Historical Uploads.....	9

ESSER Recovery Funding Phase I Reporting



Safe In-Person Instruction

Provide Internet Access

Reengaging Students

Allocation of ESSER Resources

ARP ESSER Mandatory Requirement

Data Requested by USED

Did the LEA spend ESSER funds on any of the items below to maintain safe in-person instruction?

- Promoting vaccination
- Consistent and correct mask use
- Physical distancing
- Screening testing to promptly identify cases, clusters and outbreaks
- Ventilation
- Handwashing and respiratory etiquette
- Staying home when sick and getting tested
- Contact tracing, in combination with isolation and quarantine
- Cleaning and disinfection

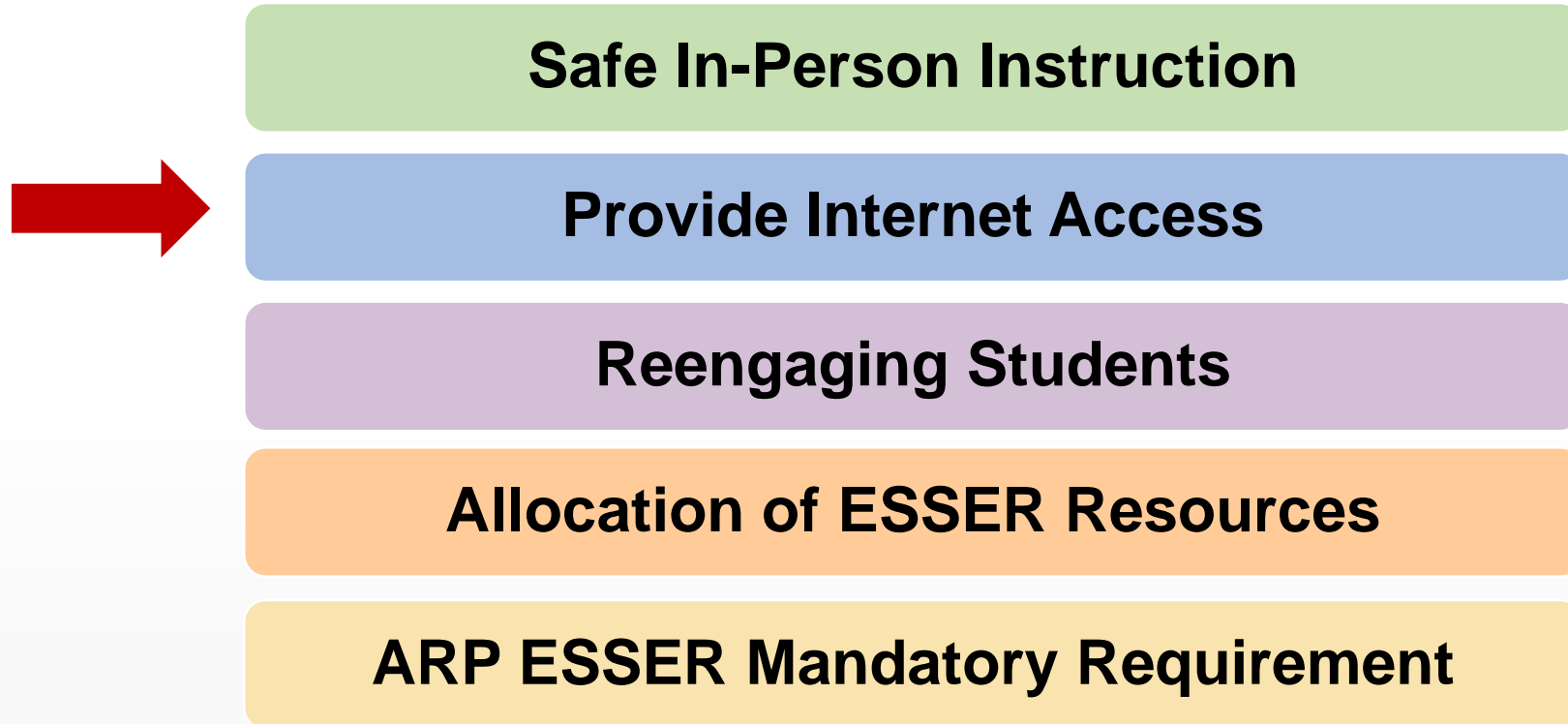
Safe In-Person Instruction

1	Category	LEA Details	Maintaining Safe In-Person Instruction. Did the LEA expend ESSER funds on any of the items below (note, ESSER refers to ESS)					
2	Element	LEA Name	Promoting vaccination	Consistent and correct mask use	Physical distancing	Screening testing to promptly identify cases, clusters, and outbreaks	Ventilation	Handwashing and respiratory etiquette
3	Column Label	LEA Name	Promoting Vaccination	Consistent Correct Mask Use	Physical Distancing	Screening Testing	Ventilation	Handwashing Respiratory Etiquette
4	Required Field	Required	Required	Required	Required	Required	Required	Required
5	Format	Option Set	Option Set	Option Set	Option Set	Option Set	Option Set	Option Set
6								
7								
8			TRUE					
9			FALSE					

< > ☰
Safe In Person Instruction
Provide Internet Access
Reengaging Students
Allocation of ESSER Resources
ESSER III Mandatory Requirement
+



ESSER Recovery Funding Phase I Reporting



Data Requested by USED

Did the LEA use ESSER funds to provide home internet access for any students in FY22? (T/F)

What types of home internet services were provided by the district using ESSER funds?

- Mobile hotspots with paid data plans
- Internet connected devices with paid data plans
- LEA pays for the cost of home internet subscription for student
- LEA provides home internet access through an LEA-managed wireless network
- Other (please describe)

Provide Internet Access

1	Category	LEA Details	ESSER Funds to Provide Internet Access					What types of home Internet services were provided by the district using ESSER funds? Internet S
2	Element	LEA Name	Did this LEA use ESSER funds to provide home Internet access for any students in fiscal year 2021?	Mobile hotspots with paid data plans	Internet connected devices with paid data plans	LEA pays for the cost of home Internet subscription for student	LEA provides home Internet access through a LEA-managed wireless network	Other
3	Column Label	LEA Name	ESSER Funds For Home Internet	Mobile Hotspots	Devices Paid Data Plans	Paid Home Internet	LEA Managed Wireless	Other Indicator
4	Required Field	Required	Required	Required	Required	Required	Required	Required
5	Format	Option Set	Option Set	Option Set	Option Set	Option Set	Option Set	Option Set
6								
7								
8								TRUE
9								FALSE

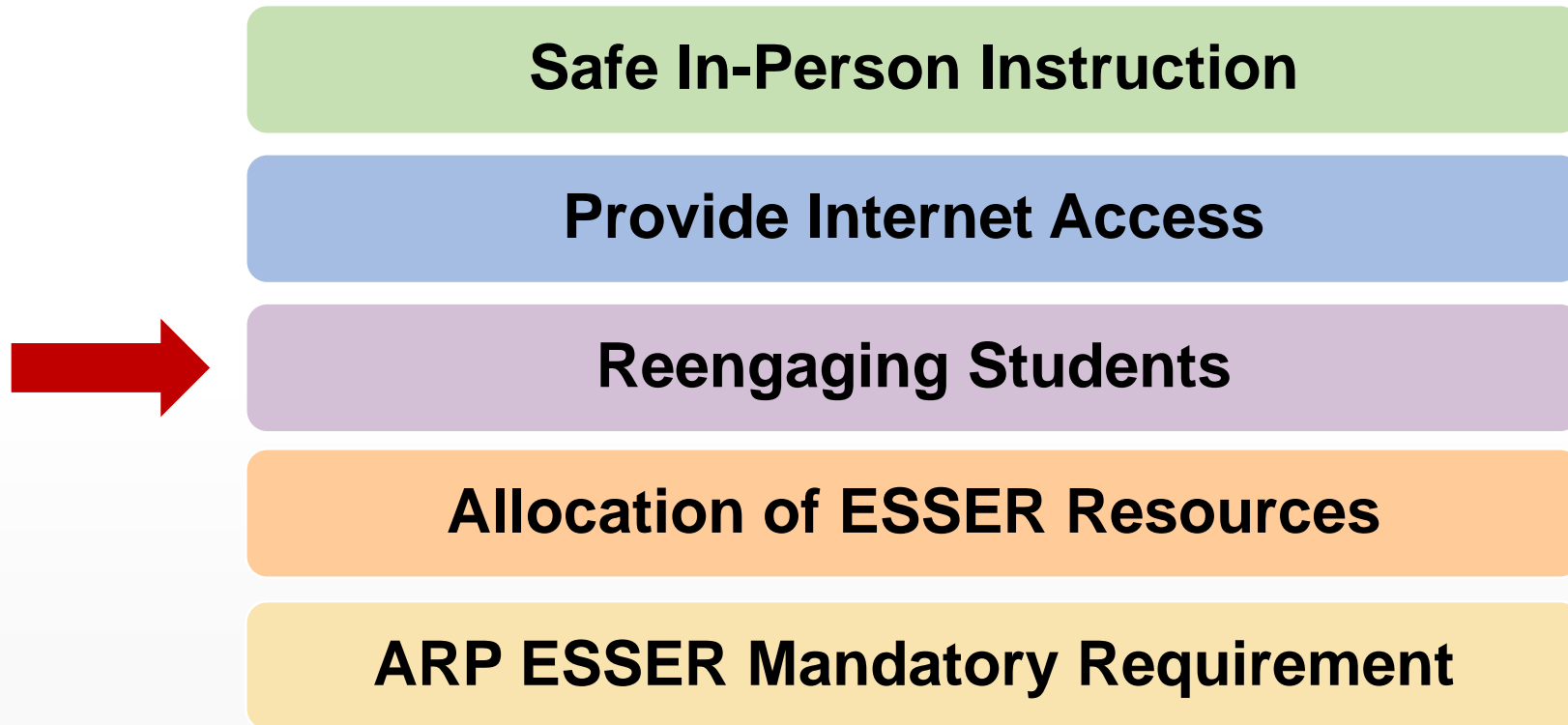


Provide Internet Access

OTHER is a required field.



ESSER Recovery Funding Phase I Reporting



Data Requested by USED

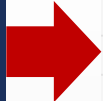
Did the LEA seek to reengage students with poor attendance or participation?

Types of strategies:

- Direct outreach to families
- Engaging the school district homeless liaison
- Partnering with community-based organizations
- Offering home internet service and/or devices
- Implementing new curricular strategies to improve student engagement
- Offering credit recovery and/or acceleration strategies
- Other (please describe)

Reengaging Students

1	Category	LEA Details	Funds to Reengage Students	How did the LEA seek to reengage students with poor attendance or participation?				
2	Element	LEA Name	Did the LEA seek to reengage students with poor attendance or participation? (Mark TRUE or FALSE) Mark TRUE if the LEA undertook any strategies to reengage students with poor attendance or participation, regardless of whether ESSER or other funding were used for these purposes.	Direct outreach to families	Engaging the school district homeless liaison	Partnering with community-based organizations	Offering home internet service and/or devices	Implementing curriculum improvements
3	Column Label	LEA Name	ESSER Funds For Reengagement	Outreach To Families	Homeless Liaison	Partnering CBO	Home Internet Offered	New Strategies
4	Required Field	Required	Required	Required	Required	Required	Required	Required
5	Format	Option Set	Option Set	Option Set	Option Set	Option Set	Option Set	Option Set
6								
7								
8								
9								



ESSER Recovery Funding Phase I Reporting

Safe In-Person Instruction

Provide Internet Access

Reengaging Students



Allocation of ESSER Resources

ARP ESSER Mandatory Requirement

Data Requested by USED

Did this LEA allocate some portion of ESSER funds to schools in this reporting period?

If yes, indicate whether the below criteria were used to allocate ESSER funds to schools.

- Flat amount per school or per pupil
- Number or proportion of students at the school with specific curricular needs, such as students with disabilities or English learners
- Number or proportion of students at the school who are eligible for Free or Reduced-Price Lunch and/or other indicators of low-income background
- Measure(s) of lost instructional time (“learning loss”)
- Stakeholder or community input
- Title I status
- Other (Please describe)

Allocation of ESSER Resources

1	Category	LEA Details	Allocation of ESSER Resources within LEA			How did this LEA allocate ESSER funds?
2	Element	LEA Name	Did this LEA allocate some portion of ESSER funds to schools in this reporting period? Note, ESSER refers to ESSER I, ESSER II, and ESSER III funds	Flat amount per school or per pupil	Number or proportion of students at the school with specific curricular needs, such as students with disabilities or English language learners	Number or proportion of students at the school who are eligible for Free or Reduced-Price Lunch and/or other indicators of low-income background
3	Column Label	LEA Name	ESSER Funds to Schools	Flat Amount School Pupil	Quantity Students Curricular Needs	Quantity Students FARMS
4	Required Field	Required	Required	Required	Required	Required
5	Format	Option Set	Option Set	Option Set	Option Set	Option Set
6						
7						
8						



ESSER Recovery Funding Phase I Reporting

Safe In-Person Instruction

Provide Internet Access

Reengaging Students

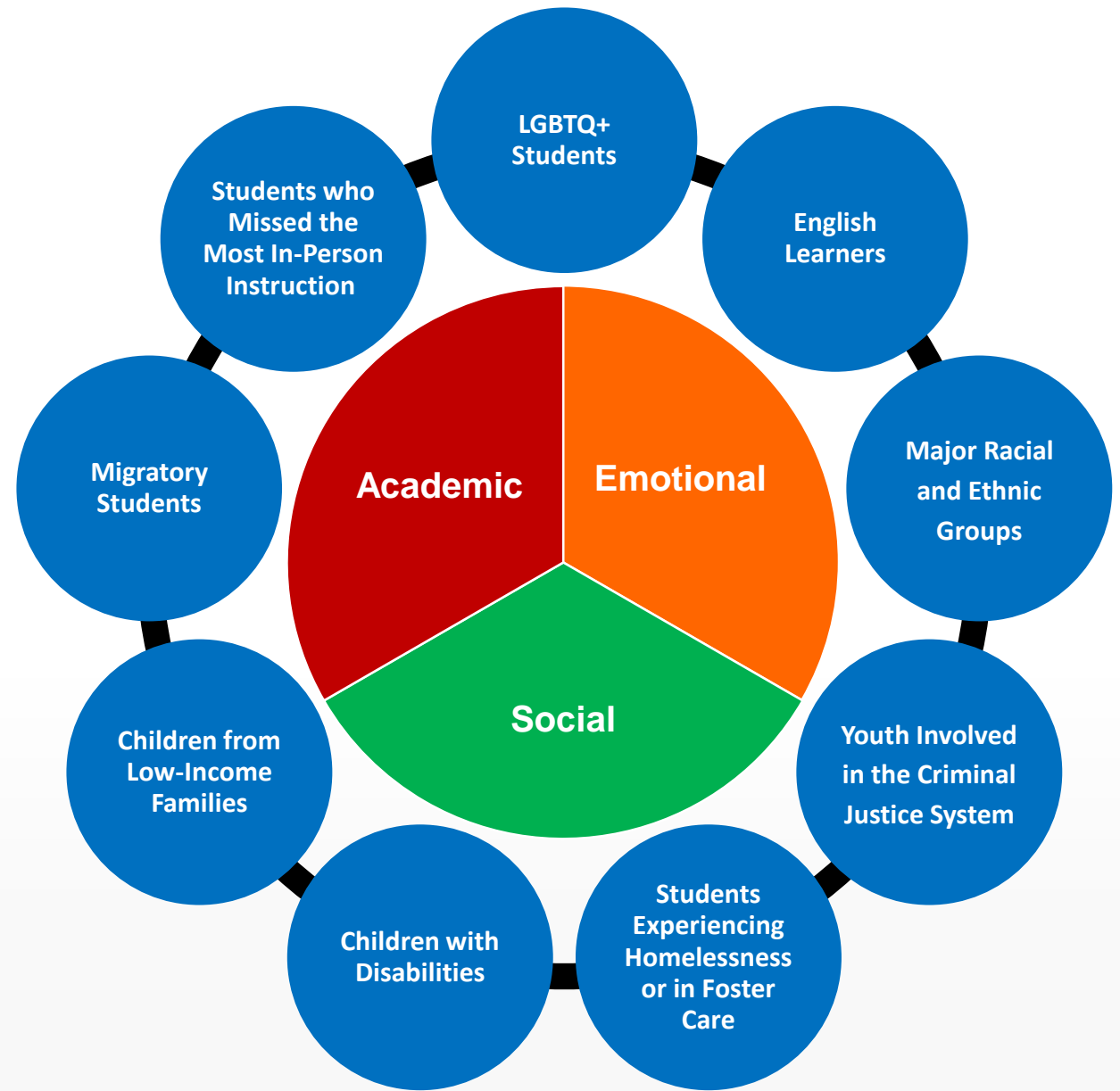
Allocation of ESSER Resources



ARP ESSER Mandatory Requirement

ESSER III-ARP 20%

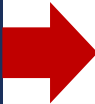
As a requirement of the ESSER III-ARP grant, LEAs must spend a minimum of 20 percent of their total allocation to address learning loss through evidence-based interventions and ensure that those interventions respond to students' social, emotional, and academic needs. These activities should address the disproportionate impact of coronavirus (COVID-19) on underrepresented student subgroups.



ESSER III Mandatory Requirement

1	Category	LEA Details	Which activities or interventions did the				
2	Element	LEA Name	Summer learning or summer enrichment	Afterschool programs	Extended instructional time (school day, school week, or school year)	Tutoring	Additional clas
3	Column Label	LEA Name	Summer Learning	After School Programs	Extended Instruction Time	Tutoring	Additional
4	Required Field	Required	Required	Required	Required	Required	Req
5	Format	Option Set	Option Set	Option Set	Option Set	Option Set	Optic
6							
7							
8							
9							

ESSER III Mandatory Requirement



Data Requested by USED

Please describe how the selected activities or interventions address the disproportionate impact of COVID-19 on each underserved student group.

Please include the following in your response:

- Identify which underserved groups listed in the question represent students served at your LEA.
- Describe the impact of COVID-19 on those student groups.
- Explain how the evidence-based interventions, identified in columns C – Q, address those impacts.

(3000 characters max)

Note: LEAs may refer to their ESSER III-ARP application or Continuing Education Plan (CEP) to complete the narrative for this section.

ESSER III Mandatory Requirement

1			Impact
2			
3	Other (please specify):	Other (please specify):	Please describe how the selected activities or interventions that the LEA implemented to satisfy the LEA's mandatory 20% set-aside requirements for ESSER III-ARP funds respond to students' academic, social, and emotional needs. Please describe how these activities or interventions address the disproportionate impact of COVID-19 on each listed underserved student groups, including each major racial and ethnic group, children from low-income families, children with disabilities, English learners, migratory students, students experiencing homelessness, youth in foster care, and other groups disproportionately impacted by the pandemic that have been identified by the SEA.
4	Other Indicator	Other	ESSER_IOI COVID Impact Statement
5	Required	Required	Required
6	Option Set	Open Text (Less than 1500 characters)	Open Text (More than 10 and less than 1500 characters)
7			
8			
9			

< > ☰
uction
Provide Internet Access
Reengaging Students
Allocation of ESSER Resources
ESSER III Mandatory Requirement
Data Elements Descriptions
+



ESSER Reporting Support

Data Elements Definitions: OSSE has included detailed descriptions of each question and option on the final tab of the template.

Tab	Element Type	OSSE	Required?	Drop-Down Menu?	Definition	Directions	Permitted Values
Safe In Person Instruction		Handwashing respiratory etiquette	Yes	Yes	Whether the LEA expended ESSER (SEA Reserve and/or mandatory subgrant) funds on handwashing and respiratory etiquette.		True/False
Safe In Person Instruction		Staying home when sick	Yes	Yes	Whether the LEA expended ESSER (SEA Reserve and/or mandatory subgrant) funds on staying home when sick and getting tested		True/False
Safe In Person Instruction		Tracing Isolation Quarantine	Yes	Yes	Whether the LEA expended ESSER (SEA Reserve and/or mandatory subgrant) funds on contact tracing, in combination with isolation and quarantine		True/False
Safe In Person Instruction		Cleaning Disinfection	Yes	Yes	Whether the LEA expended ESSER (SEA Reserve and/or mandatory subgrant) funds on cleaning and disinfection		True/False
Provide Internet Access		Did this LEA use ESSER funds to provide home Internet access for any students in fiscal year 2021? (Mark TRUE or FALSE)	Yes	Yes	Whether the LEA expended ESSER (SEA Reserve and/or mandatory subgrant) funds to provide home internet access for students	In column C, select TRUE or FALSE to indicate if the LEA expended ESSER I-CARES, ESSER II-CRRSA, or ESSER III-ARP funds to provide home internet access to students during FY21 (October 1, 2020 – September 30, 2021).	True/False
Provide Internet Access		Mobile hotspots with paid data plans	Yes	Yes	Whether the LEA expended ESSER (SEA Reserve and/or mandatory subgrant) funds to provide mobile hotspots with paid data plans	In columns D – G, select TRUE or FALSE for each internet service type.	True/False
Provide Internet Access		Internet connected devices with paid data plans	Yes	Yes	Whether the LEA expended ESSER (SEA Reserve and/or mandatory subgrant) funds to provide internet-connected devices with paid data plans		True/False
Provide Internet Access		LEA pays for the cost of home Internet subscription for student	Yes	Yes	Whether the LEA expended ESSER (SEA Reserve and/or mandatory subgrant) funds to provide a home internet subscription for students paid for by		True/False



ESSER Reporting Support

- **Reducing burden:** OSSE will prepopulate as much as possible
- **Communication and training:**
 - Webinar to provide instructions on completing Phase I reporting data collection
 - K12 Grants Newsletter will have updates, including upcoming deadlines
 - March 2 webinar on how to submit your LEA's Phase II reporting data collection
- **Answering questions:**
 - Submit questions to OSSE.ESSER@dc.gov
 - Reach out to your ESSER grant specialist directly



Q & A
