



Continuous Education Plans (CEPs) Overview Webinar

May 19 and 20, 2021

Agenda for Today

- Review **Continuous Education Plans** and application timeline (20 minutes)
- Review **health and safety plan** question topics (5 minutes)
- Review **SY2020-21 assessment data collection** requirements (5 minutes)
- Share **federal emergency grant funding** opportunities (10 minutes)
- Discuss **supports available to you** in developing your plans and applications (10 minutes)
- **Question and answer** (10 minutes)



Introduction and Timelines

Recovery Priorities

SAFE REOPENING

Ensure a safe reopening of school buildings for all students and staff

STUDENT & STAFF WELL-BEING

Support the physical, social-emotional, mental, and behavioral health of our school communities

ACCELERATED LEARNING

Assess impact of interrupted instruction and accelerate learning, at home and in person, for all students

Expectations for LEAs



Submit **federal grant applications** to receive emergency funds



Submit your **continuous education plan** for SY2021-22

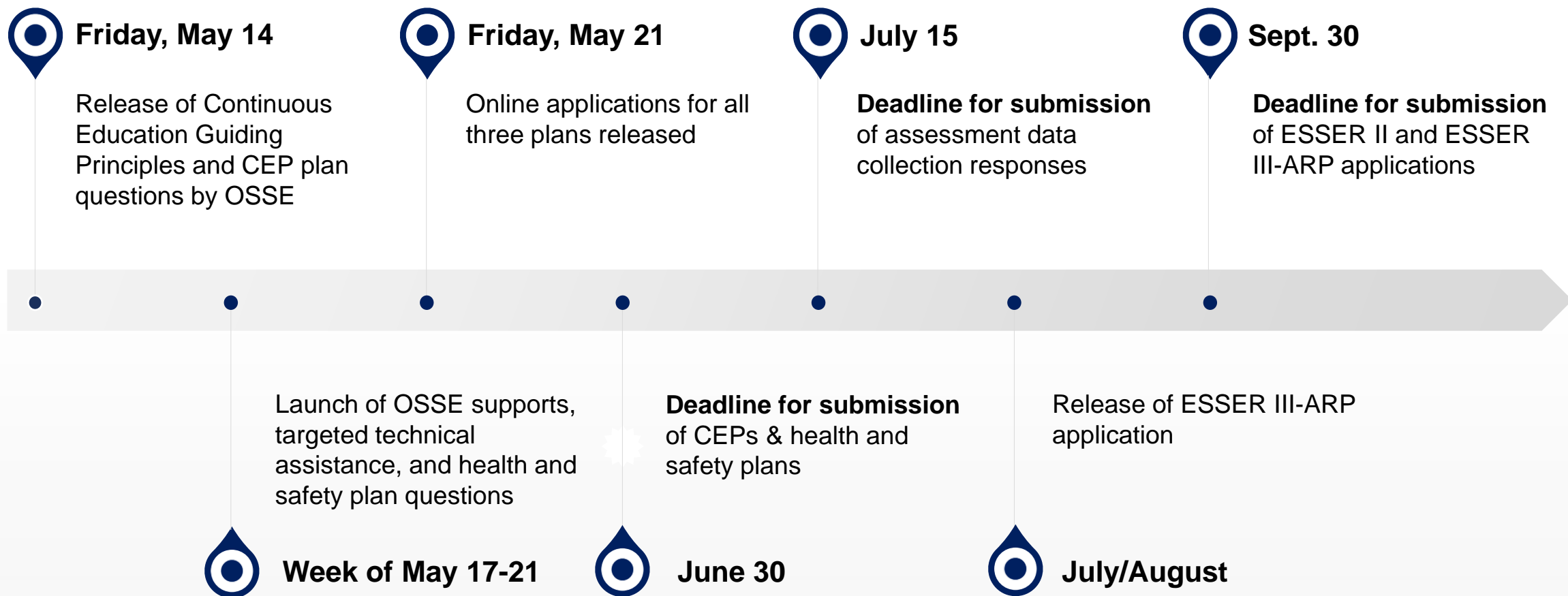


Submit your **health and safety plan** for SY2021-22



Submit your **assessment data collection responses** for SY2020-21

Timeline for Supports & Deadlines





Continuous Education Plans (CEPs) Overview

Continuous Education Plan (CEP) Details

Safe Reopening	Student and Staff Well-Being	Accelerated Learning
<ul style="list-style-type: none">• Support Across Learning Environments<ul style="list-style-type: none">• Including questions on how schools will serve all students 5 days per week in person, as well as students with medical certifications who participate in distance learning	<ul style="list-style-type: none">• Whole Child Supports• Educator Wellness• Family Engagement• Attendance and Re-Engagement	<ul style="list-style-type: none">• Clear Goals and High Expectations• Strategies for Accelerated Learning• Supporting Special Populations• Effective Use of Funds<ul style="list-style-type: none">• Including questions on how LEAs will use their emergency ESSER funding

CEP Materials

2021-2022 Guiding Principles for Continuous Education

Continuous Education Plan (CEP) Questions

CEP Technical Appendix

CEP Resource Guide

- Provides clear and consistent expectations for serving students in person five days a week, as well as for offering distance learning under limited circumstances
- Includes CEP and 2020-21 assessment data collection questions
- We anticipate releasing the health and safety plan questions this week
- Detailed FAQs and guidance on providing complete answers in your applications
- Dedicated website with links to resources to help you complete your applications

All materials can be found on OSSE's website: <https://osse.dc.gov/page/guiding-principles-continuous-education-2021-2022>



Plan Submission and Due Dates

Plan	Who must complete?	When is it due?	Who can edit and submit the application?	Who will review?
Continuous Education Plan	All LEAs	June 30	LEA leaders and data managers*	<ul style="list-style-type: none"> • OSSE: LEAs serving K-12 students • PCSB: LEAs serving exclusively adult or early childhood students
Health and Safety Plan	All LEAs	June 30	LEA leaders and data managers*	OSSE
SY2020-21 Assessment Data Collection	Individual schools serving K-12 students	July 15	<ul style="list-style-type: none"> • Edit: School assessment managers • Edit and submit: LEA leaders and data managers* 	OSSE



*If data managers submit, we require LEA leaders to digitally sign and attach a simple form approving the submission.

Plan Review and Approval Process

- OSSE or PCSB will review LEAs' responses for **completion, clarity** and **compliance**
- Responses that fail to meet one or all of these criteria will cause the application to be returned to the LEA or school for revisions in **mid-July**
- LEAs will be provided comments and asked to revise specific responses and resubmit to OSSE or PCSB **within two weeks of receiving the comments**
- OSSE will conduct a final review and post the plans on our website

Completion	Did the LEA/school response address all parts of the question and provide sufficient detail as outlined in the Complete Answer Guide? (yes/no)
Clarity	Did the LEA/school write the response in such a way that the median stakeholder could access the information? (yes/no)
Compliance	<ul style="list-style-type: none">• CEPs and Assessment Data Collection: The LEA response indicates the LEA complied with applicable federal and local laws or regulations (yes/no)• Health and Safety Plans: The LEA's/school's plan includes and is consistent with the requirement(s) of the DC Health and OSSE COVID-19 health and safety guidance for schools (yes/no)

Please review the “**Complete Answer Guide**” contained in the **Technical Appendix** for guidance on how to develop complete answers for the **CEP** questions.

Other Key Plan Details

- **The plans will be made public**
 - Like last year, final plans will be posted publicly in their entirety on OSSE's website.
- **The plans require specific stakeholder engagement**
 - To fully engage community members in the development of the plans, as well as to comply with US Department of Education regulations, LEAs must engage specific groups in the development of their plans, including families, students, and teachers.
- **OSSE will monitor select metrics related to special education and English learners**
 - OSSE will monitor data we already collect, as well as request two one-time special education data submissions from LEAs due in August 2021 and November 2021.
 - OSSE may reach out to LEAs for consultation based on the results of these metric reviews.

Please review the Technical Appendix carefully to ensure your LEA is prepared to meet all the requirements as you develop your plan.

Support Webinars

- OSSE will host several webinars **this week** to provide more information on the CEPs
- Please encourage staff members involved in the drafting of your CEPs to attend these webinars (registration links are included in the email you received)
- Recordings will be posted on OSSE's website for staff who cannot attend

Meeting Name/Topic	Date/Time	Registration Details
CEP Overview Webinars	<ul style="list-style-type: none">• Wednesday, May 19, 4-5 p.m.• Thursday, May 20, 9-10 a.m.	Registration link on OSSE's website
ESSER CRRSA Funding Webinar	<ul style="list-style-type: none">• Thursday, May 20, 1-2 p.m.	Registration link on OSSE's website
Health and Safety Plans Webinar	<ul style="list-style-type: none">• Friday, May 21, 10-11 a.m.	Registration link on OSSE's website
Assessment Collection Office Hours	<ul style="list-style-type: none">• Weeks of May 31-June 4 and June 7-11	Invitation to be shared in Next Gen Assessments bulletin



Health and Safety Plans Overview

Plan Details: Health and Safety Plans

- [DC Department of Health](#) and [OSSE](#) have issued health and safety guidance for all public, public charter, private, parochial and independent schools in the District of Columbia.
- All LEAs/schools must submit comprehensive health and safety plans in accordance with this guidance.
- An LEA's/school's health and safety plan will support the safe reopening and operation of school buildings, including plans related to:
 - face masks;
 - physical distancing;
 - handwashing and respiratory etiquette;
 - personal protective equipment
 - maintaining clean and healthy facilities;
 - responding to a COVID-19 case;
 - COVID-19 testing and vaccines;
 - students with disabilities;
 - training, technical assistance and monitoring to assist in the implementation of the guidelines; and
 - communicating policies and procedures to students, families, staff and visitors.

Plan Details: Health and Safety Plans (cont.)

- On Friday, May 21 from 10-11 a.m., OSSE's Health and Wellness Division will review and answer questions related to the Health and Safety Plan questions.
- If you are not already registered, please register [here](#).



SY2020-21 Assessment Data Collection Overview

Plan Details: Assessment Data Collection

➤ What is OSSE looking for?

- How schools set goals this year (amid challenges)
- How schools assessed students locally (and did so equitably)
- How schools used these results
- How schools communicated with families about these results

Plan Details: Assessment Data Collection (cont.)

➤ What will OSSE do with this information?

- Analyze formative assessment landscape and determine if/how OSSE can support
- Convene groups of LEAs based on assessment approaches
- Publish results as reported (including caveats about use)
 - I.e., no plan to aggregate results



ESSER Recovery Funding Overview

ESSER Recovery Funding

The US Department of Education has awarded the Office of the State Superintendent of Education (OSSE) three federal grants for elementary and secondary schools to receive emergency funds.

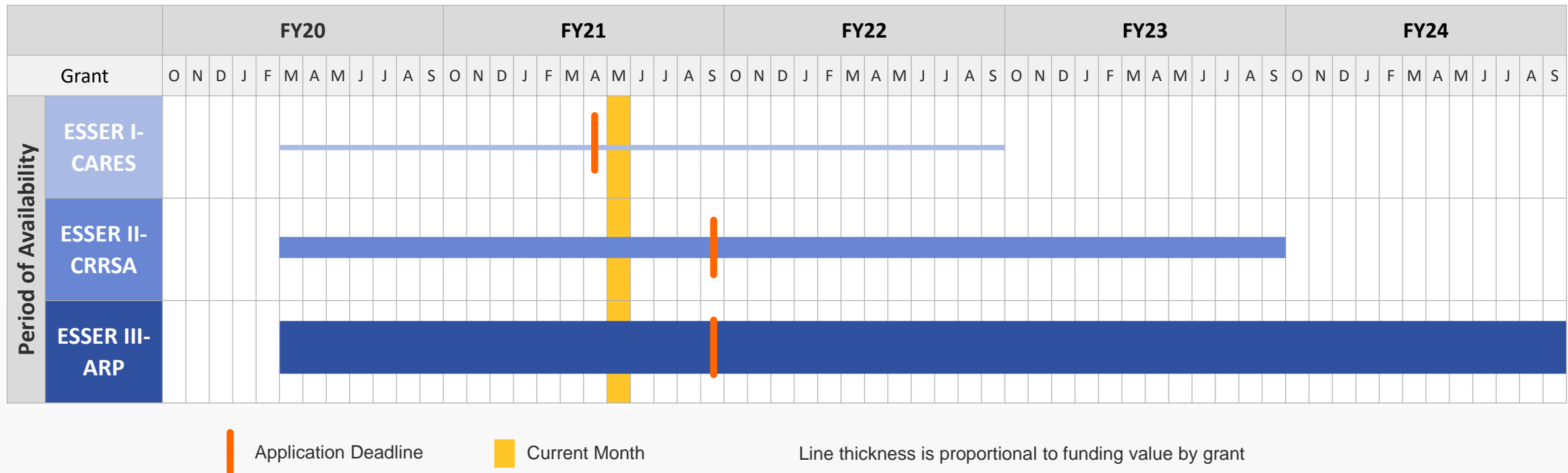
Federal Program	LEA Subgrant Funding
ESSER I-CARES Coronavirus, Aid, Relief, and Economic Security Act Elementary and Secondary School Emergency Relief Fund	\$37,805,719.23
ESSER II-CRRSA The Coronavirus Response and Relief Supplemental Appropriations Act Elementary and Secondary School Emergency Relief Fund	\$154,811,857.00
ESSER III-ARP The American Rescue Plan Act Elementary and Secondary School Emergency Relief Fund	\$347,685,439.00

These funds may be used to support local education agency (LEA) efforts now, to plan for fall 2021, and to continue the work of recovery over the next few school years.

	ESSER I-CARES	ESSER II-CRRSA	ESSER III-ARP
Act	Coronavirus Aid, Relief, and Economic Security Act on March 27, 2020	Coronavirus Response and Relief Supplemental Appropriations Act on Dec. 27, 2020	American Rescue Plan Act on March 11, 2021
Spending Priorities	Emergency relief funds to address the impact of COVID-19 on schools	<ul style="list-style-type: none"> • Safely Reopen Schools • Address Learning Loss • Address Specific Needs (e.g. mental wellness, tech) 	<ul style="list-style-type: none"> • Safely Reopen Schools • Address Learning Loss (at least 20% reserve required for evidence-based interventions) • Address Specific Needs (e.g. mental wellness, tech)
Allowable Uses	Allowable use details are available on OSSE's website and include all allowable uses for other major federal programs	Allowable use details are available on OSSE's website and include all allowable uses for ESSER I-CARES	Allowable use details are available on OSSE's website and include all allowable uses for ESSER I-CARES
Application Timeline	Application Deadline: April 15, 2021	Application Opened: May 7, 2021 Application Deadline: Sept. 30, 2021	Assurances Deadline: May 7, 2021 Application Opens: July/Aug. 2021 Application Deadline: Sept 30, 2021
Reporting	<ul style="list-style-type: none"> • Application & Reimbursements • Additional Data 	<ul style="list-style-type: none"> • Continuous Education Plan • Application & Reimbursements • Additional Data 	<ul style="list-style-type: none"> • Continuous Education Plan • Application & Reimbursements • Additional Data

ESSER Recovery Funding

Staggered ESSER funding timelines allow LEAs to support the immediate needs of students and staff, as well as recover from the effects of the COVID-19 pandemic.



ESSER Spending Priorities

Priority	Safely Reopen Schools	Address Specific Needs	Address Learning Loss
Budget Categories (EGMS Budget Codes)	<ul style="list-style-type: none"> • Air Quality Equipment, Maintenance and Servicing (A1) • Facility and Outdoor Space Upgrades and Modifications (A2) • Supplemental Staffing – Operations (A3) • Coronavirus Testing (A4) • PPE and Other Health and Safety Supplies (A5) • Sanitation Services (A6) • Public Health Consulting Services (A7) 	<ul style="list-style-type: none"> • Nutrition, Physical Activity, and Physical Health Supports (B1) • Mental Health Services and Supports for Students (B2) • Mental Health Services and Supports for Staff (B3) • Educational Technology – Devices (B4) • Educational Technology – Internet Access (B5) • Educational Technology – Digital Services (B6) 	<ul style="list-style-type: none"> • Supplemental Staffing – Instructional (C1) • Diagnostic, Formative, and Interim Assessment (C2) • Curriculum (C3) • Intervention Programs (C4) • Professional Development (C5) • Summer Programs (C6) • Afterschool Programs (C7) • Tutors Programs and Services (C8)
Example Programs	<ul style="list-style-type: none"> • COVID-19 testing protocol • Outdoor learning spaces 	<ul style="list-style-type: none"> • Replacement tech devices • Meal program supplies • Social emotional learning programming for students • Staff wellness supports 	<ul style="list-style-type: none"> • High dosage tutoring • SWD recovery program • EL recovery program

ESSER III – ARP Specific Requirements

✓ **Minimum 20% Reserve on Learning Loss**

LEAs must reserve at least 20 percent of their allocation to address learning loss through the implementation of evidence-based interventions and ensure that those interventions respond to students' social, emotional, and academic needs and address the disproportionate impact of COVID-19 on underrepresented student subgroups.

✓ **In Person Learning and Use of Funds Plan**

LEAs must make publicly available on their website a plan that addresses how the LEA will ensure the safe return to in-person instruction and continuity of services and a plan for how the LEA intends to use ESSER III-ARP funds. Plan requirements will be covered through the LEA's Continuous Education Plans.

✓ **Maintenance of Equity**

LEAs have a maintenance of equity requirement for each of FYs 2022 and 2023. OSSE will issue guidance on this requirement when we receive it from USED. We expect it will compare provision of services to under-represented sub-groups of students in prior years to ensure equity in benefit from the ESSER III – ARP funds. This requirement does not apply to LEAs with an enrollment of less than 1,000, with only one school site, or only one school site per grade band.

Resources to Help LEAs Plan

- [OSSE Recovery Funding Website](#)
- [Post Award Application Webinars](#) - May 20, 1-2 p.m.
- ESSER Funding Strategy Guide
- Application Planning Tool (email OSSE.ESSER@dc.gov to request a copy)



SY2021-22 OSSE Supports

Supports from OSSE



Set **clear expectations** through updated Guiding Principles for Continuous Education



Offer **targeted technical assistance** to select LEAs for the design of the plans and strategic use of the additional funding



Provide a **portfolio of supports** to help all LEAs design and implement the plans

CEP Consultative Supports with TNTP

OSSE is partnering with TNTP to provide consultation hours for LEA leaders and instructional leaders, to **thought partner** around:

- Identifying and addressing key barriers to **learning acceleration**
- Emphasizing learning acceleration in lieu of remediation through **grade-level content** and **high quality materials**
- Impactful **family and community** engagement and partnership
- Planning **professional learning** for teachers, including leveraging **progress monitoring** for learning acceleration
- Implementing evidence-based instructional strategies, **diagnostic tools, and interventions**
- Identifying and addressing **talent gaps or challenges**

Consult Options

CEP Brainstorming

Leadership Team Supports

CEP Draft Plan Review & Feedback



Supports for Accelerated Learning

High-Quality ELA Instructional Materials

- Workshop series: “What makes materials high quality?”
- Technical assistance in reviewing current materials
- Support in selection or adoption of new materials
- Community of Practice with other LEAs

High-Quality Math Curricula & Materials

- One-year subscriptions for schools for Zearn Math, plus hard copy student workbooks
- Use as main curriculum, supplemental interventions, and/or tutoring programs
- Resources, lesson plans and training for educators

Virtual Coaching for Instructional Leaders

- Coach-the-coach approach to empower school leaders in supporting educators
- Utilizing an integrated tech platform for data collection and observation
- Training session + 8 hours of individualized coaching



LEA Support Session: Tutoring to Accelerate Learning

OSSE is partnering with CityBridge Education, the leaders of the [CityTutor DC initiative](#), to provide a support session for LEA leaders.

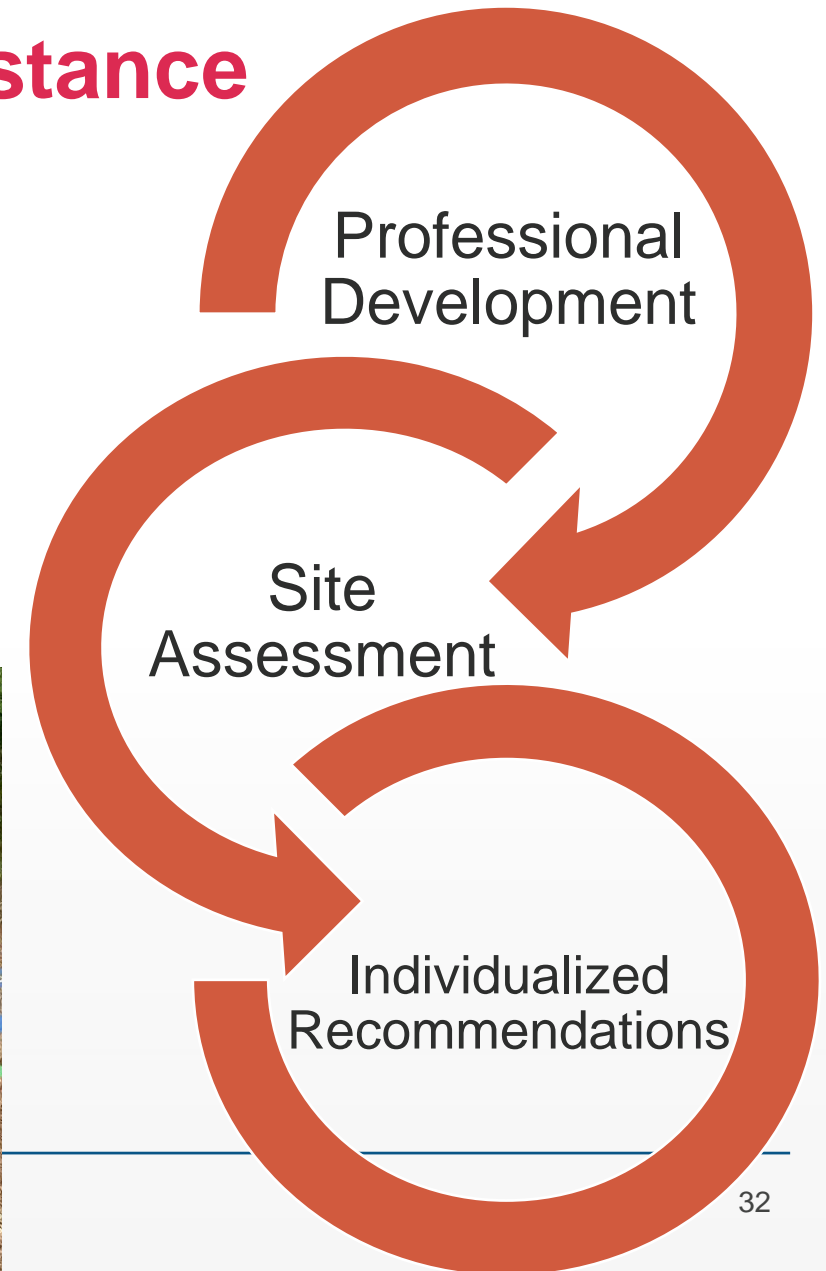
- **Monday, May 24, 1-2:30 p.m.** [Register here](#)
- Gain a deeper understanding of tutoring best practice must-haves and pitfalls.
- Gain insights from the schools in CityTutor DC's tutoring design sprints.
- Be ready to take next steps in designing an effective tutoring program.

For questions contact Dr. Jennifer Norton at Jennifer.Norton@dc.gov.



Outdoor Learning Technical Assistance

- OSSE plans to contract with a vendor to provide technical assistance to District schools to establish outdoor learning spaces to maximize the number of students engaged in outdoor learning
- [Apply here](#) by June 14



Indoor Air Quality Evaluation and Technical Assistance

- OSSE plans to contract with a vendor to support district LEAs with technical assistance related to indoor air quality (IAQ).
- At no cost to the LEA, the contractor will assess building IAQ and share recommendations on steps the LEA can take to improve its IAQ.
- As soon as the contract is in place, we will provide application information for interested LEAs.



Question and Answer

Timeline for Supports & Deadlines

