

# Supportive and Wrap-around Services for Immigrant Families in the District

OSSE AFE & UDC Mini-PD Institute

December 15, 2020

**Stephanie Mintz, Briya PCS**

**Eduardo Reyes, Catholic Charities**



# Participants in this session will be able to

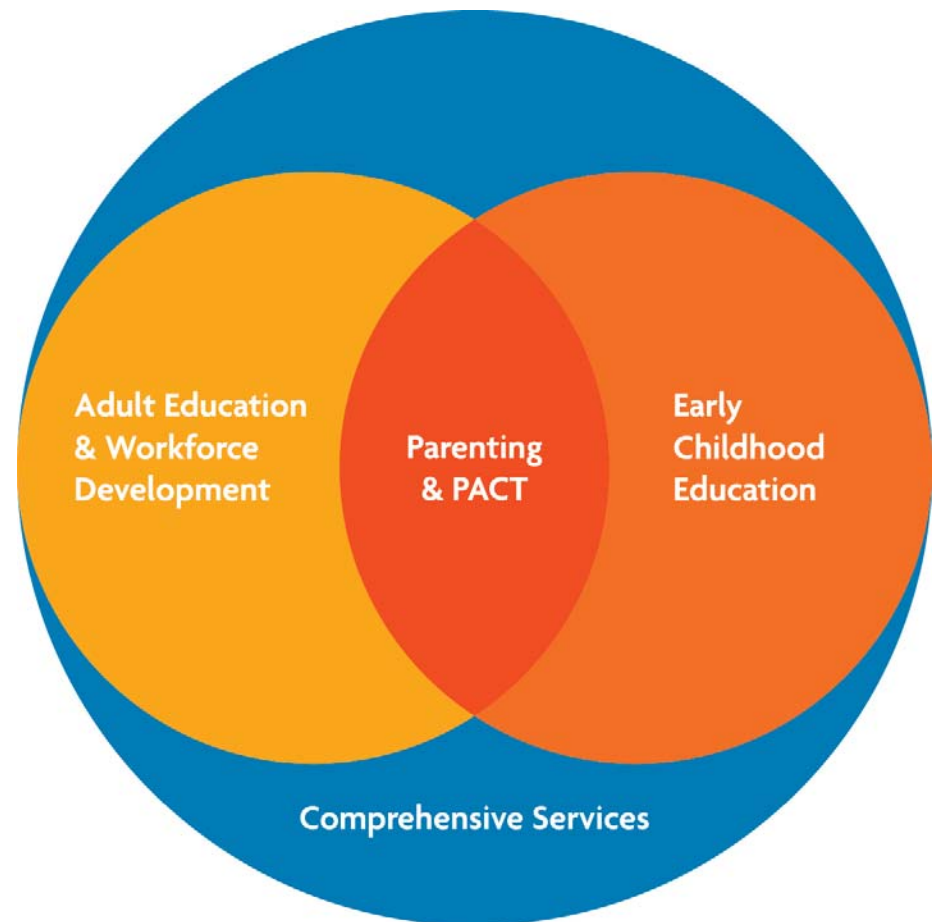
- ✓ Reflect on the importance of collaborative partnerships;
- ✓ Name examples of adult and family supports that have been helpful during the pandemic;
- ✓ Identify at least one strategy that can possibly be adapted by their organization or school.

# Briya Program Overview



## Mission & Model

- Briya's mission is to strengthen families through culturally responsive two-generation education.
- Model includes education for parents and their young children.





# Programs

## *Two-Generation Program*

Parents: English (basic to advanced levels), digital literacy, parenting

Children: dual-language program for children from birth to 5

Family Time: parents and children together

## *Workforce Development Certifications*

Medical Assistant

Child Development Associate



## Briya Student Profile

- 96% of students are living in poverty
- 95% of students are ELL
- Basic 1 adult students have an average of six years of formal education

# Comprehensive Services





## Community School Model

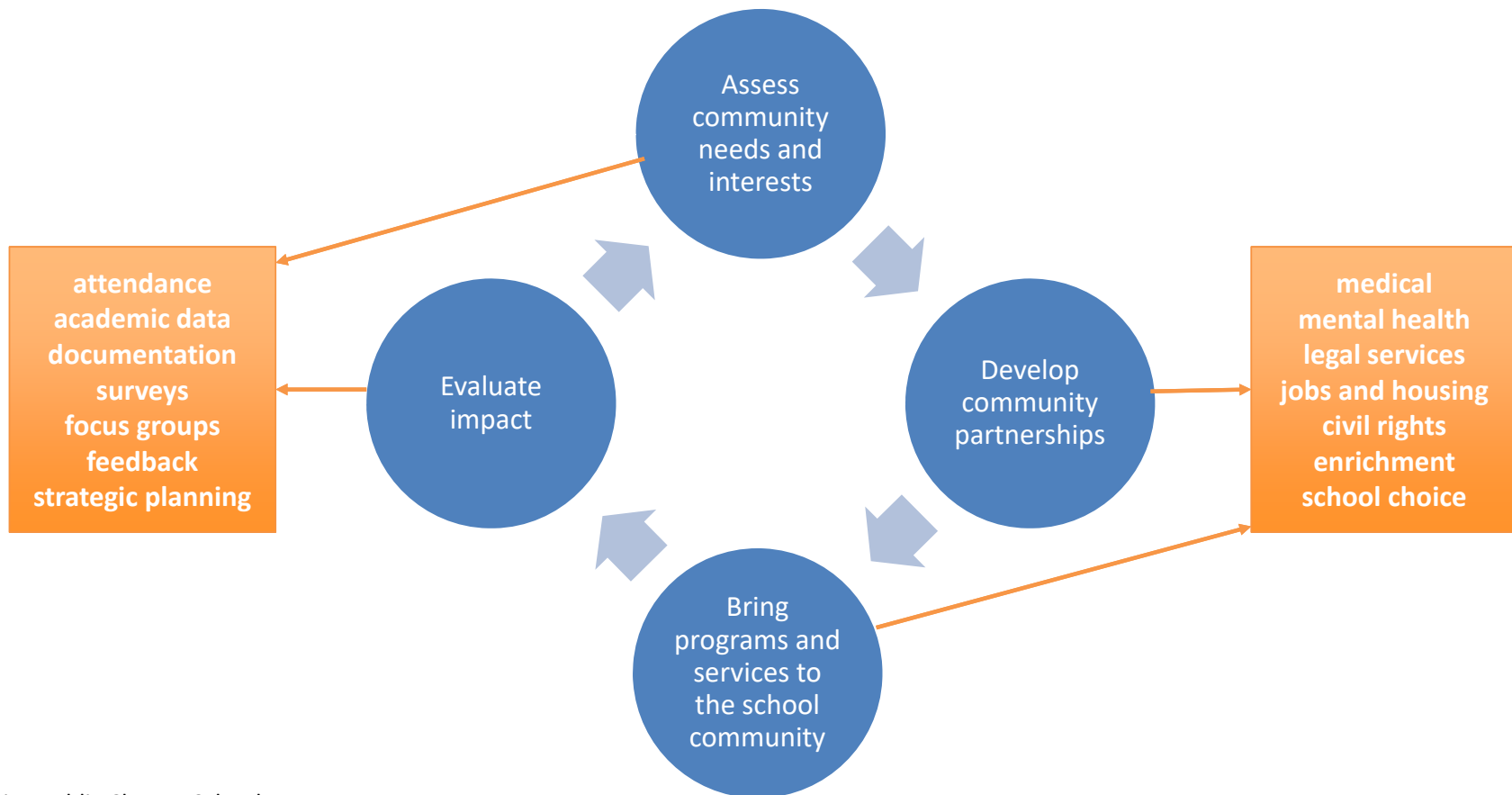
- Comprehensive model supports parents and children holistically in order to truly address their needs. We know families' outcomes are stronger when they are a part of a network of support.
- On-site student services at each Briya site help connect students to on-site and outside resources.

## Partner with Mary's Center Since 1999

- Federally Qualified Health Center
- Social change model combines education, health care, and social services
- Briya is co-located with Mary's Center at 3 of our 4 sites

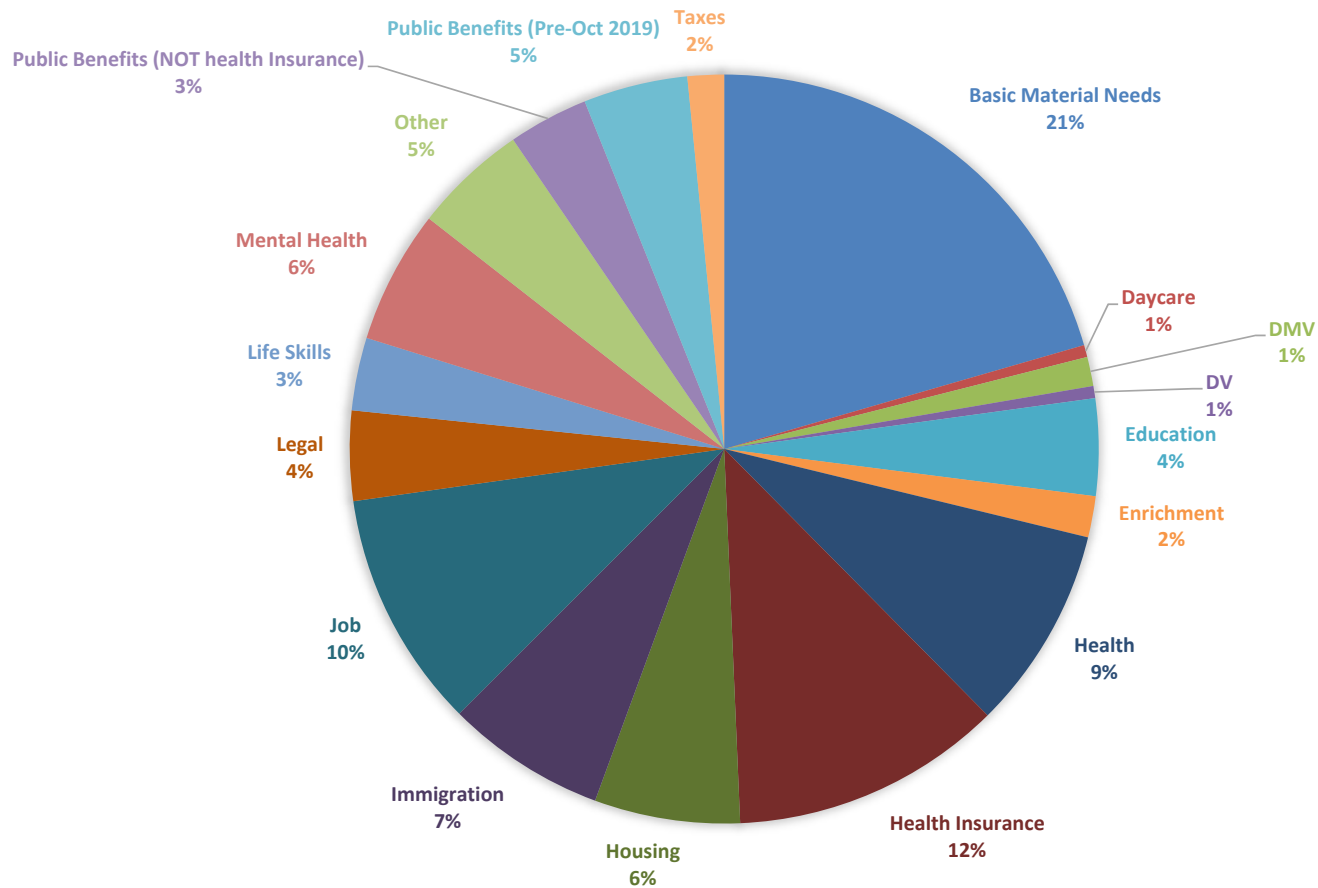


# Community Schools Model and Student Services



# School Year 2019-2020 - 955 Student Services Cases

## 410 Students Served (138 referred to Mary's Center)



# Support & Engagement During Pandemic

## Accessing Resources

Internet

Food

Know your rights:  
rent, utilities,  
benefits

Health, Benefits, Crisis

Help for Stress

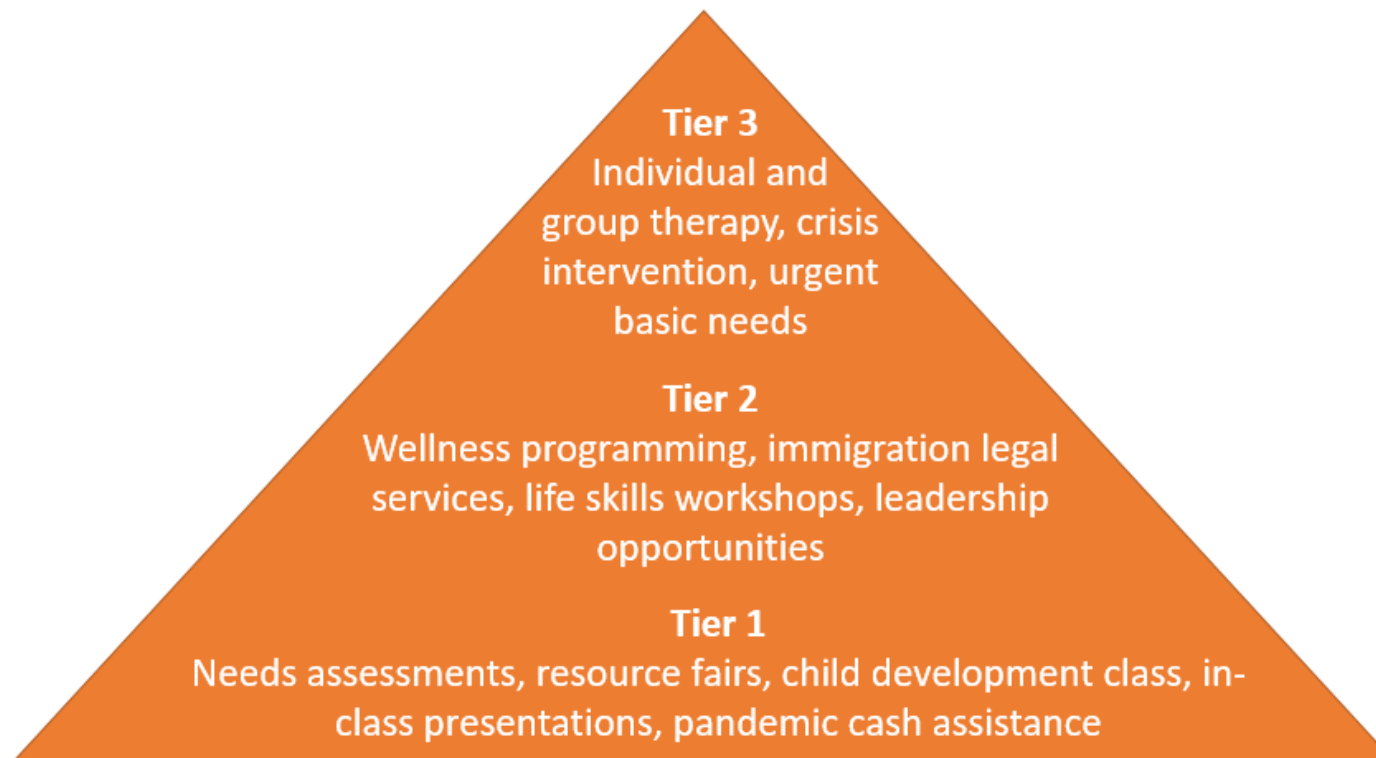
- ✓ Emotional Support
- ✓ Emergency Assistance
- ✓ Health Care Navigation
- ✓ Advocacy

[Student Services on Student Website](#)

# Student Advocacy During Pandemic



# Multi-Tiered System of Supports (MTSS) for Adult Learners



# Thank you!

Visit us online: [www.briya.org](http://www.briya.org)

Facebook.com/BriyaPCS

Twitter.com/BriyaPCS

Instagram.com/BriyaSchool

I look forward to connecting with you!

Stephanie Mintz, Student Services

[smintz@Briya.org](mailto:smintz@Briya.org)

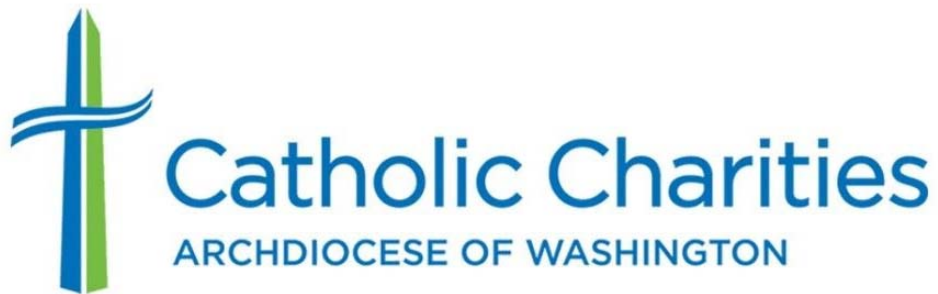


# The Spanish Catholic Center

- Opened in 1967 as the local Latino population grew in Mount Pleasant.
- Over time, the center scaled up to offer a full range of health and social services to immigrants and refugees.
- "We offer a hand up, not a handout."
- "Say Yes!"



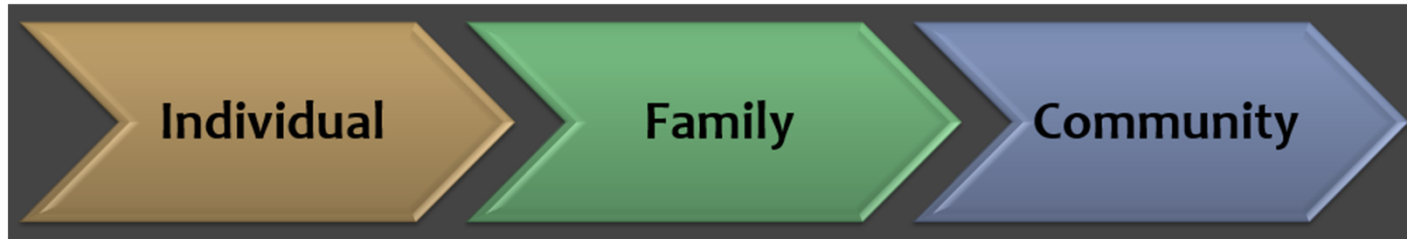
# Agency's Mission



Catholic Charities is the social ministry outreach of the Archdiocese of Washington. Motivated by the Gospel message of Jesus Christ, and guided by Catholic social and moral teaching, Catholic Charities strengthens the lives of all in need by giving help that empowers and hope that lasts. To this end we affirm and support the dignity of all human life, strengthen families and serve the poor and most vulnerable.

# Catholic Charities' Approach

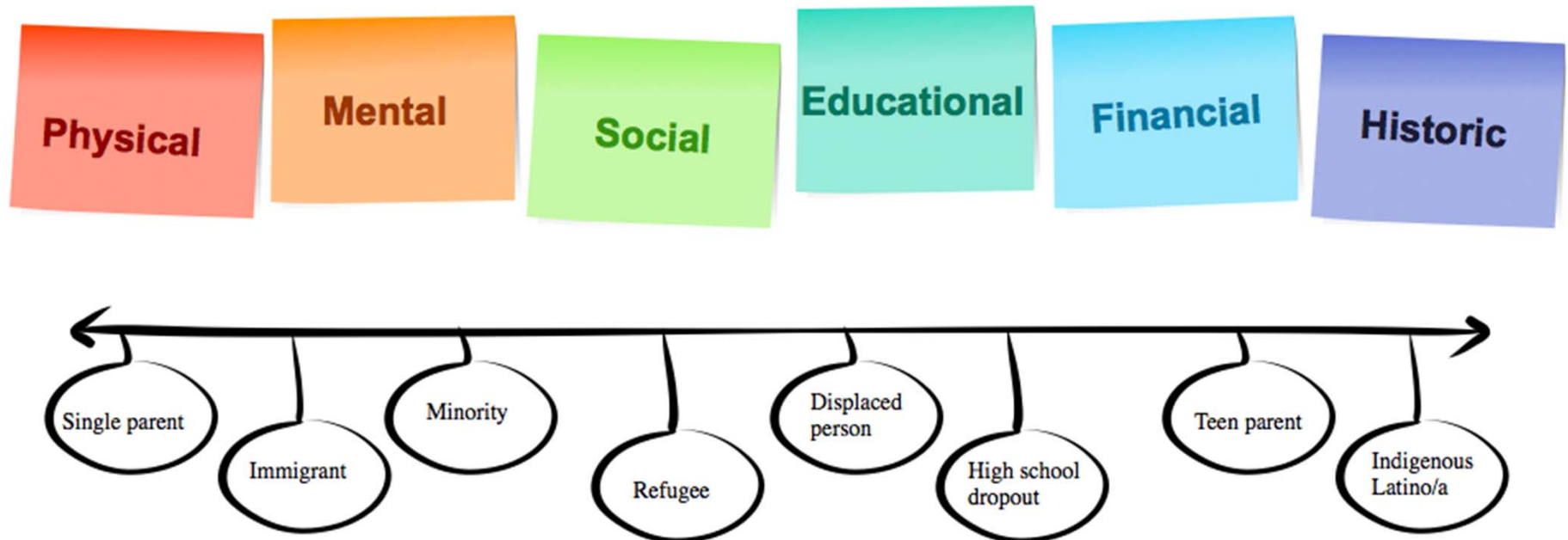
- Our team focuses on addressing our consumers' vulnerability:



- As one of the largest social services providers on the nation, the agency has created programs to assist socially marginalized populations.

# Consumers' Poverty and Vulnerability

## Variability in Vulnerability



# Our Adult Learners' Social Vulnerability

---

Among our adult learners, the following types of vulnerability are reported by students or staff:

- Political
- Economic
- Cultural
  - Ethnic
  - Racial



# Provision of Comprehensive Case Management

---

Culturally competent case management is offered to our adult learners. Referrals are sent to the agency's:

- Immigration Legal Services
- Healthcare Services
- Housing Program
- Trafficking Victims Assistance Program
- Food Pantry
- Clothing Drive



# Development Strategies



BUILDING ALLYSHIP



INSTILLING RECIPROCITY



RAISING AWARENESS



STRENGTHENING INTERNAL  
AND EXTERNAL  
PARTNERSHIPS

A large orange shape on the left side of the slide, consisting of a rectangle with a quarter-circle cutout on its right side.

## Recommendations to Leadership

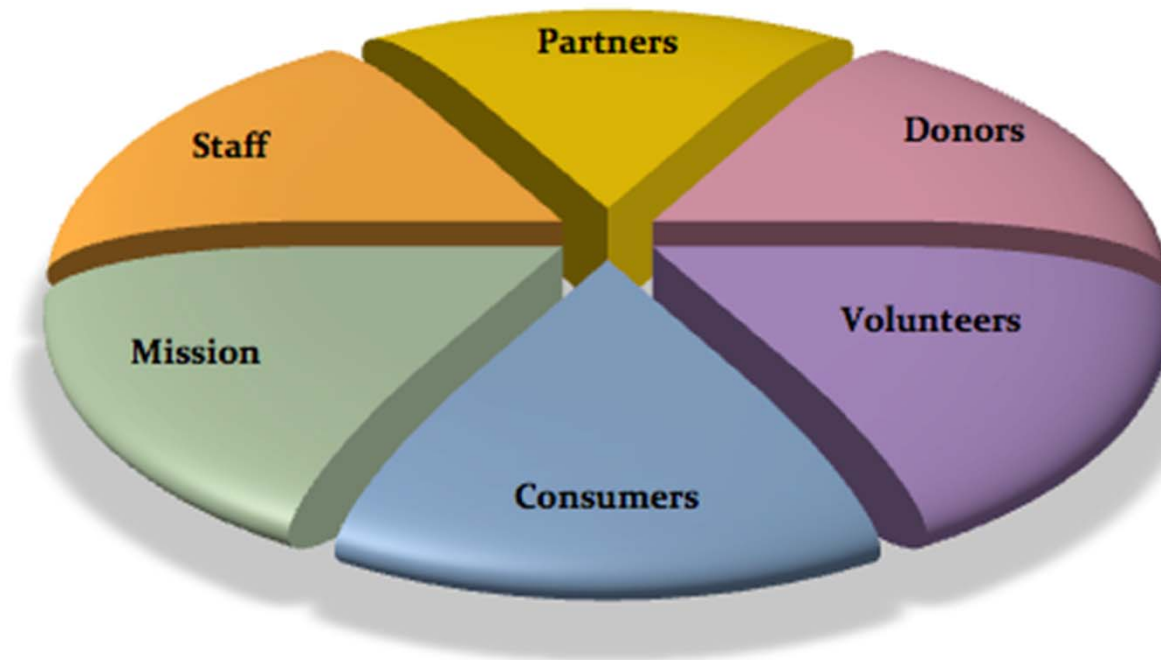
Observe trends that affect consumers and programs:

- Historic trends
- Immigration
- Employment



---

## Catholic Charities



**Operationa  
I Success**



## **Pre-Apprenticeship Green Construction Program**

- Offered at our center since 2005.
- Currently offered virtually.



## Bank Telling

- Partnership with Bank of America.
- Current curriculum modified to offer additional financial career options.

# Washington English Center

- Partnership created to offer English courses to Catholic Charities consumers.
- Another example of the efficacy of volunteer-driven initiatives.





# Thank you

---

Eduardo Reyes – Program Manager

[eduardo.reyes@cc-dc.org](mailto:eduardo.reyes@cc-dc.org)

[www.catholiccharitiesdc.org](http://www.catholiccharitiesdc.org)

Spanish Catholic Center, 1618 Monroe Street, NW

202-939-2400

