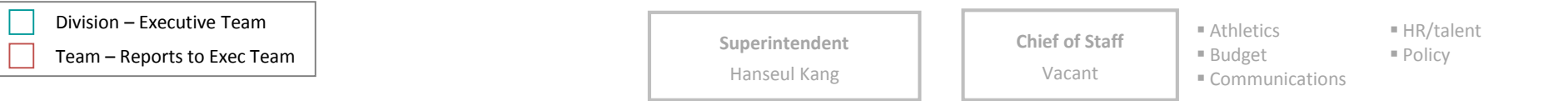


VERSION AS OF AUGUST 2015



What's the role of this team?

Licenses and monitors child development centers and homes

Sets policy for the child care subsidy program, administers subsidy payments and early learning grant awards

Provides service coordination and direct services for children birth to age four who have disabilities. Supports the Child Find Partnership.

Develops and implements the state's professional development system for professionals serving children birth to age five

Works to boost the quality of early learning programs and shares information with families about quality throughout the state. Manages and supports the Quality Improvement Network (QIN).

- What are the key responsibilities of this team?

▪ Issue licenses

▪ Monitor licensed facilities to ensure compliance with child care licensing regulations

▪ Enforce systems that provide the foundation for the protection of children in child care settings

▪ Administer the Child Care and Development Block Grant

▪ Establish eligibility policies and payment rates

▪ Audit compliance

▪ Process monthly provider payments

▪ Provide funding to support quality improvement initiatives

▪ Coordinate early intervention services and support families with infants and toddlers who have been diagnosed with developmental delays or disabilities

▪ Design and implement the state professional development system

▪ Facilitate professional development trainings to early education stakeholders

▪ Coordinate professional development registry and credentialing system

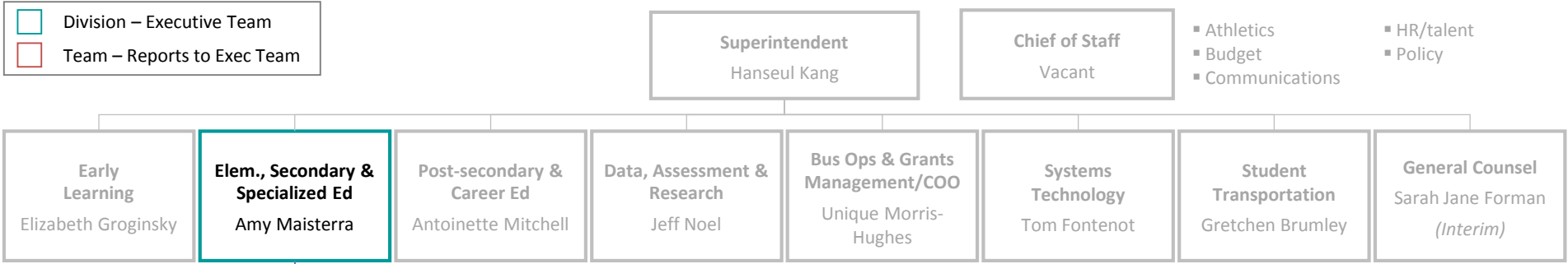
▪ Provide training and technical assistance

▪ Ensure program quality assurance through on-site monitoring and evaluations

▪ Provide monitoring and oversight of the Hub agencies supporting the QIN

Division – Executive Team

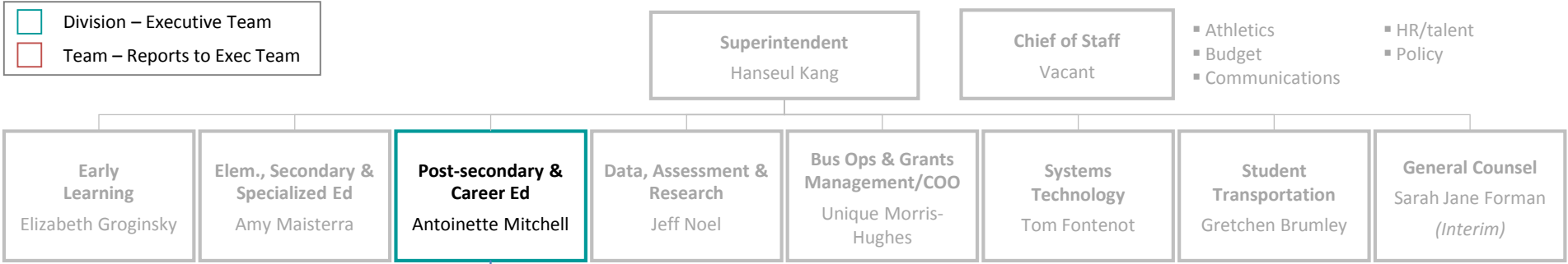
Team – Reports to Exec Team

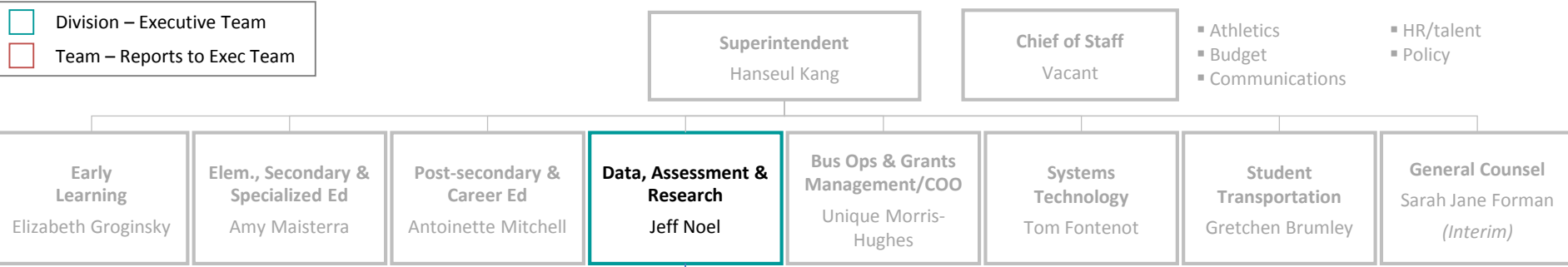


<p><b>What’s the role of this team?</b></p> <p>Supports the development of great teachers and leaders who have the skills and knowledge to effectively reach all learners, including students with disabilities and English Language Learners</p>	<p>Provides local education agencies with a combination of meaningful supports and interventions to accelerate school improvement and student outcomes, in accordance with IDEA and ESEA</p>	<p>Creates regulatory and policy framework to support compliance, drive achievement, foster innovation, and disseminate best practices across sectors. Supports specialized charter sector planning and funding initiatives.</p>	<p>Fosters community-parent-school connections and out of school learning opportunities that support students with disabilities, students who are homeless, home schooled, or in private schools</p>	<p>Oversees nonpublic placement and ensures appropriate oversight of programming for students with disabilities in private schools, and coordinates behavioral health and community school partnerships</p>	<p>Coordinates strategic fiscal spending plan that supports core work, and ensures that staff have supporting conditions to be effective, through the creation of sound operational procedures and tracking systems</p>
<p><b>What are the key responsibilities of this team?</b></p> <ul style="list-style-type: none"> <li>▪ Teacher effectiveness and licensure</li> <li>▪ Standards-based training &amp; technical assistance</li> <li>▪ School-wide evidence-based models</li> <li>▪ Support for special populations</li> <li>▪ Literacy</li> </ul>	<ul style="list-style-type: none"> <li>▪ ESEA waiver implementation</li> <li>▪ Statewide System of Support (ESEA)</li> <li>▪ School Improvement Grant (SIG)</li> <li>▪ Race to the Top</li> <li>▪ ESEA monitoring</li> <li>▪ IDEA monitoring</li> </ul>	<ul style="list-style-type: none"> <li>▪ Policy &amp; regulation development</li> <li>▪ Office of Public Charter School Finance &amp; Support (SOAR &amp; Title VB)</li> <li>▪ Special Education State Complaint Office</li> <li>▪ State Special Education Systemic Improvement Plan coordination</li> <li>▪ Data coordination</li> </ul>	<ul style="list-style-type: none"> <li>▪ Parent outreach (ESEA and IDEA)</li> <li>▪ 21st Century Grant</li> <li>▪ McKinney-Vento Homeless Assistance</li> <li>▪ Homeschooling</li> <li>▪ Private schools</li> </ul>	<ul style="list-style-type: none"> <li>▪ Nonpublic placement oversight</li> <li>▪ Nonpublic school monitoring</li> <li>▪ Interagency coordination: CFSA, DBH, DYRS</li> <li>▪ Interagency school support</li> <li>▪ Community Schools</li> </ul>	<ul style="list-style-type: none"> <li>▪ Internal ESSE Support (e.g., staff onboarding, equipment, travel, training)</li> <li>▪ Grant applications</li> <li>▪ Fiscal monitoring</li> <li>▪ Fiscal policy</li> <li>▪ ESSE budgeting and procurement</li> <li>▪ Reimbursements</li> </ul>

Division – Executive Team

Team – Reports to Exec Team





What's the role of this team?

- Assessments & Accountability  
Jessica Enos

Leads OSSE's Next Generation Assessment (NGA) annual test administration coordination, policy portfolio, and test integrity procedures
- Policy & Partnerships  
Gwen Rubenstein

Supports the division through developing strategic community partnerships and coordinating engagement around OSSE's data tools and reports
- Longitudinal Data Systems  
William Henderson

Provides strategic support to LEA and school operations by ensuring secure access to high quality historical and current student level data

What are the key responsibilities of this team?

- Lead DC state assessments
  - ESEA accountability
  - PARCC
  - NCSC alternative assessment
  - ACCESS ELL assessment
  - Science assessment
  - Early childhood assessment
  - Accountability calculations
  - Title III accountability
- School report cards
  - Research partnerships
  - Research and evaluation
  - Community partnerships
  - LearnDC
  - Equity Reports
- Data collection and verification
  - SLED
  - Federal data reporting
  - Data system development
  - Enrollment audit data
  - EdFacts
  - Interagency data sharing agreements

Division – Executive Team
 Team – Reports to Exec Team

